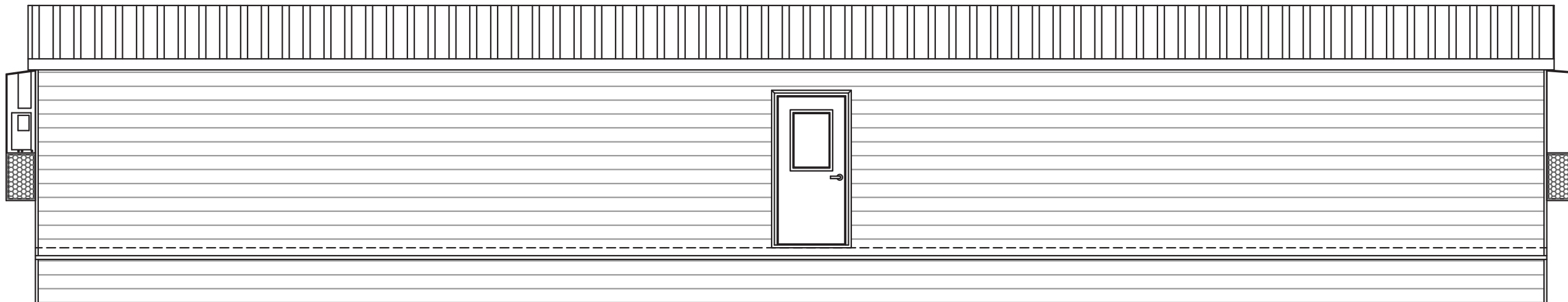


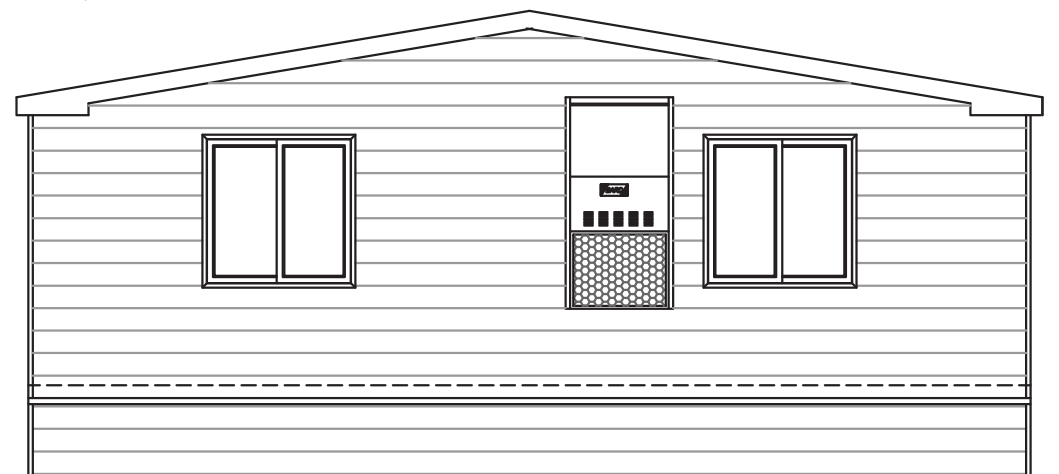
FRONT ELEVATION

SCALE: 3/16"=1'-0"



REAR ELEVATION

SCALE: 3/16"=1'-0"



RIGHT SIDE ELEVATION

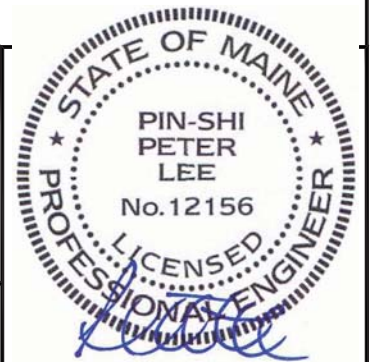
SCALE: 3/16"=1'-0"



LEFT SIDE ELEVATION

SCALE: 3/16"=1'-0"

PETER LEE, P.E. M.S.
 ENGINEERING INTERNATIONAL, INC.
 ENGINEER: PETER LEE, P.E., M.S.
 CONSULTING ENGINEER
 23329 CENTURY DRIVE
 ELKHART, IN 46514



Nov. 11, 2015



SCHIAVI LEASING
 JENNIFER CURRIER
 103 AIRPORT ROAD
 OXFORD, ME 04270
 PH: (207) 539-8211
 FAX:
 WWW.VANGUARDMODULAR.COM

SERIAL #: 1386 A-B
 OCCUP: E
 DRAWING #: VGM-2015-0027

EXTERIOR ELEVATIONS

This document and all information contained herein, are the proprietary data and trade secrets of Vanguard Modular Building Systems (VMBS), and Schiavi Leasing Corporation (Schiavi). This document and the information contained herein may not be reproduced, used, or disclosed in any manner, or to any extent. Written authorization by a current employee of VMBS or Schiavi must be obtained prior to use of this information, in any form, including that which is represented by this complete page.

Drawing Date: 11-10-2015	Project: PORTLAND, ME
Drawn By: J.L.B.	Sheet: A1
Scale: 3/16"=1'-0"	2 of 6