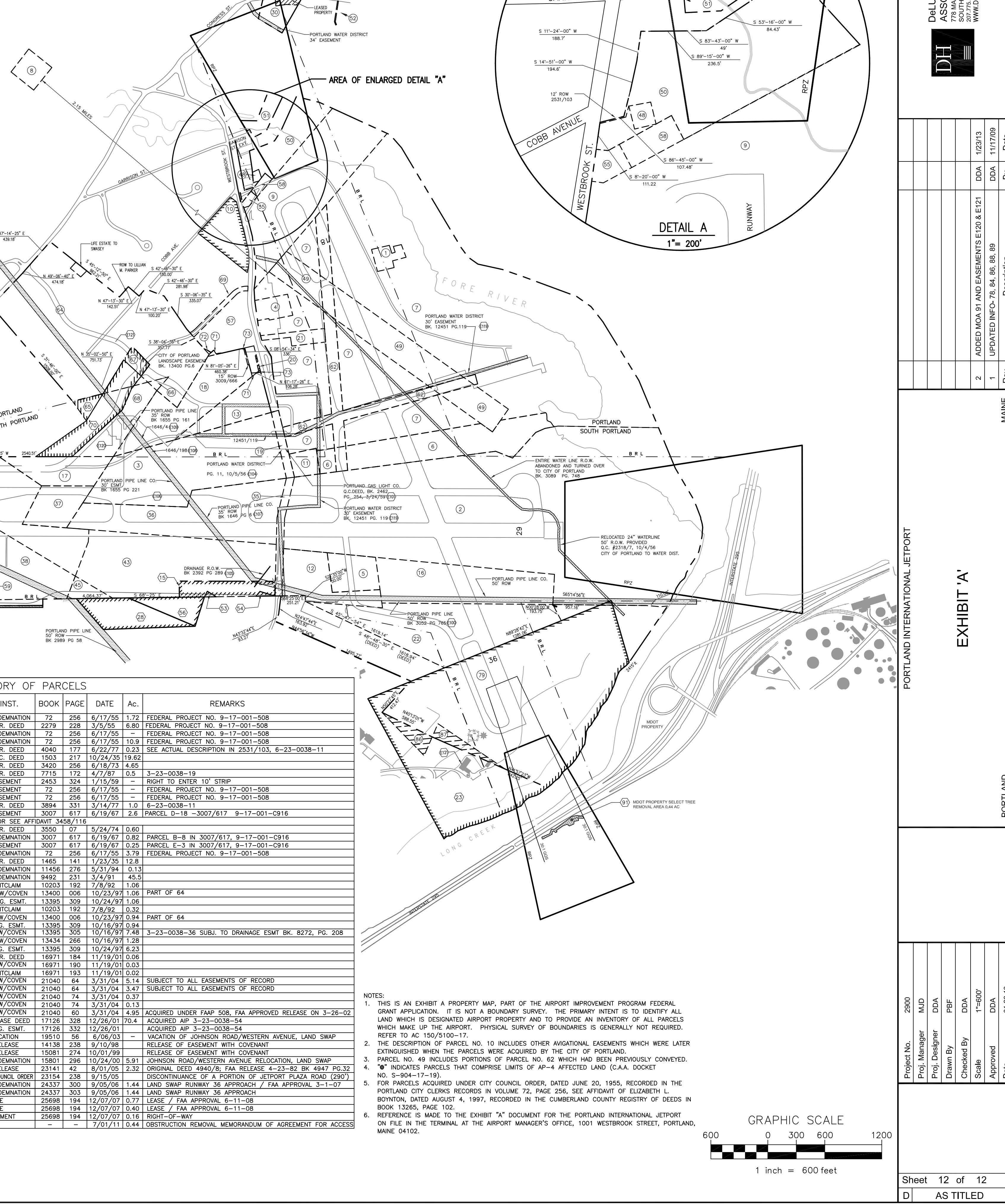


EASEMENTS ON AIRPORT PROPERTY							
MAP KEY	GRANTOR	GRANTEE	BOOK/PAGE	INSTRUMENT	DATE	AREA	REMARKS
E100	STATE OF MAINE	PORTLAND PIPE LINE CORPORATION	3056/755	INDENTURE	08/14/68		
E101	CITY OF PORTLAND	PORTLAND GAS AND LIGHT COMPANY	2462/254	QUIT CLAIM	03/24/59		
E103	CITY OF PORTLAND	PORTLAND WATER DISTRICT	8333/36	EASEMENT	07/08/88		
E104	CITY OF PORTLAND	PORTLAND WATER DISTRICT	2318/11	EASEMENT	10/09/56		
E105	CITY OF PORTLAND	CHAPLIN CORPORATION	2302/289	QUIT CLAIM	01/17/58		DRAINAGE
E106	CITY OF PORTLAND	PORTLAND PIPE LINE COMPANY	1655/221	EASEMENT	10/09/41		
E107	BURTON DENSMORE & GERTILDE L. DENSMORE	PORTLAND PIPE LINE COMPANY	1040/5	EASEMENT	07/14/41		SEE MAP KEY NO. 36
E108	WALTER G. & ELEANOR JOHNSON NELSON NELLER JOHNSON	PORTLAND PIPE LINE COMPANY	1648/198	EASEMENT	10/03/41		SEE MAP KEY NO. 3
E109	ISSAC FAIRWEATHER	PORTLAND PIPE LINE COMPANY	1040/4	EASEMENT	07/14/41		SEE MAP KEY NO. 18
E110	CITY OF PORTLAND	PORTLAND PIPE LINE CORPORATION	2889/575	EASEMENT	04/20/65		SEE MAP KEY NO. 61, 47, 40, 38 & 45
E111	WILLFRED A. HAY TRUSTEE OF CLINTON C. PHINNEY	SOCONY-VACUUM OIL COMPANY, INC.	1918/392	EASEMENT	07/03/48		SEE MAP KEY NO. 39
E112	FRANK P. CUMMINGS, TRUSTEE OF LEON E. CUMMINGS	SOCONY-VACUUM OIL COMPANY, INC.	1891/137	EASEMENT	12/19/47		SEE MAP KEY NO. 47 (20 FOOT WIDTH)
E113	FRANCIS B. EVANS	SOCONY-VACUUM OIL COMPANY, INC.	1943/448	EASEMENT	01/31/48		SEE MAP KEY NO. 41
E114	CITY OF PORTLAND	PORTLAND WATER DISTRICT	3028/473	INDENTURE	01/31/68		SEE MAP KEY NO. 46
E115	EDWARD S. FINKS AND DOROTHY L. FINKS	PORTLAND WATER DISTRICT	2383/121	WAR. DEED	11/12/57		SEE MAP KEY NO. 25, 26
E116	CITY OF PORTLAND	PORTLAND WATER DISTRICT	4469/349	EASEMENT	09/14/79		SEE MAP KEY NO. 28, 27
E117	CITY OF PORTLAND	PORTLAND PIPE LINE CORPORATION	1331/323	EASEMENT	09/10/97		SEE MAP KEY NO. 78
E118	CITY OF PORTLAND	MOBIL PIPE LINE COMPANY	1508/1259	INDENTURE	10/61/99		SEE MAP KEY NO. 78
E119	CITY OF PORTLAND	PORTLAND WATER DISTRICT	1245/119	EASEMENT	04/16/98		
E120	CITY OF PORTLAND	CENTRAL MAINE POWER	2851/244	EASEMENT	09/08/10		
E121	CITY OF PORTLAND	CENTRAL MAINE POWER	2851/243	EASEMENT	09/08/10		

LEGEND		
EXISTING	FUTURE	ITEM
		RUNWAY PROTECTION ZONE
		EASEMENT (AVGATIONAL)
		AIRPORT PROPERTY LINE
		CITY LINE
		BUILDING RESTRICTION LINE (B.R.L.)
		LOT LINES
		RIGHT OF WAY EASEMENTS-UTILITIES
		MEMORANDUM OF AGREEMENT (MOA) FOR ACCESS
		PROPERTY PARCEL
		EASEMENT PARCEL / MOA AREA



INVENTORY OF PARCELS							
MAP KEY	GRANTOR	GRANTEE	INST.	BOOK	PAGE	DATE	REMARKS
1	HAROLD SEIDERS	CITY OF PORTLAND	WAR. DEED	1548	80	4/23/38	1.15 PART OF 1 ALSO TAKEN BY CONDEM. 1532/305
2	HERBERT JACKSON	CITY OF PORTLAND	CONDEMNATION	1634	492	5/2/41	124.4 PARCEL 1 IN 1634/492
3	FAIRWEATHER, NELSON & LARRABEE	CITY OF PORTLAND	CONDEMNATION	1634	492	5/2/41	28.1 PARCEL 2 IN 1634/492
4	GEORGE W. MILLS	CITY OF PORTLAND	WAR. DEED	1639	63	5/16/41	2.29 PART OF 4 ALSO TAKEN BY CONDEM. 1532/305
5	STATE OF MAINE	CITY OF PORTLAND	Q.C. DEED	1647	460	1/30/41	4.59
6	CLIFFORD STRANGE	CITY OF PORTLAND	WAR. DEED	1543	276	3/1/38	15.3
7	CLIFFORD STRANGE	CITY OF PORTLAND	CONDEMNATION	1532	305	6/30/37	-
8	CLIFFORD STRANGE	CITY OF PORTLAND	WAR. DEED	1543	277	3/1/38	139.2
9	PORTLAND CITY AIRPORT	CITY OF PORTLAND	CONDEMNATION	1532	305	6/30/37	-
10	ROBERT D. JACKSON	CITY OF PORTLAND	EASEMENT	1532	301	6/30/37	-
11	CLIFFORD STRANGE	CITY OF PORTLAND	WAR. DEED	1897	140	9/25/47	1.6 FEDERAL PROJECT NO. 9-17-001-702
12	CLIFFORD STRANGE	CITY OF PORTLAND	CONDEMNATION	1880	157	8/5/47	1.6 FEDERAL PROJECT NO. 9-17-001-702
13	STATE OF MAINE	CITY OF PORTLAND	WAR. DEED	2238	53	7/22/55	8.81 FEDERAL PROJECT NO. 9-17-001-508
14	HARRY HARMON & GEORGE HUTCHINS	CITY OF PORTLAND	WAR. DEED	2361	436	7/29/57	9.60 FEDERAL PROJECT NO. 9-17-001-5811
15	MERLE P. CHAPLIN	CITY OF PORTLAND	EASEMENT	72	256	6/17/55	-
16	STATE OF MAINE	CITY OF PORTLAND	Q.C. DEED	3028	471	1/24/68	16.5 FEDERAL PROJECT NO. 9-17-001-0916
17	BROOKLAWN MEM. PARK	CITY OF PORTLAND	CONDEMNATION	3007	617	6/19/67	6.3 PARCEL B-3 IN 3007/617, 9-17-001-0916
18	BETRAM J. FAIRWEATHER	CITY OF PORTLAND	WAR. DEED	3009	866	8/30/67	12.6 FEDERAL PROJECT NO. 9-17-001-0916
19	BETRAM J. FAIRWEATHER	CITY OF PORTLAND	CONDEMNATION	3007	617	6/19/67	2.1 SEE PARCEL B-4 IN 3007/617, 9-17-001-0916
20	CUMBERLAND COUNTY COMMISSIONERS	CITY OF PORTLAND	DISCONTINUED	DOCKET	1175	JAN. 1957	1.18 CUMBERLAND CO. COMM. RECORDS, 9-17-001-508
21	LEWELLYN PRESSLEY	CITY OF PORTLAND	EASEMENT	2365	139	7/18/57	7925P GROWTH RESTRICTION, 9-17-001-5811
22	STATE OF MAINE	CITY OF PORTLAND	Q.C. DEED	1503	216	7/13/36	1.30
23	STATE OF MAINE	CITY OF PORTLAND	Q.C. DEED	471	1/24/68	24.5	FEDERAL PROJECT NO. 9-17-001-0916
24	STATE OF MAINE	CITY OF PORTLAND	EASEMENT	3028	469	1/24/68	96 EASEMENT FOR UNOBSTRUCTED AIR SPACE 9-17-001-0916
25	HARRY HARMON & GEORGE HUTCHINS	CITY OF PORTLAND	EASEMENT	3010	683	8/31/67	9.2 EASEMENT FOR UNOBSTRUCTED AIR SPACE 9-17-001-0916
26	HARRY HARMON & GEORGE HUTCHINS	CITY OF PORTLAND	EASEMENT	3007	617	6/19/67	9.2 PARCEL D-1 IN 3007/617, 9-17-001-0916
27	EDWARD S. & DOROTHY L. FINKS	CITY OF PORTLAND	WAR. DEED	2457	282	2/13/59	4.30 FEDERAL PROJECT NO. 9-17-001-5912
28	EDWARD S. & DOROTHY L. FINKS	CITY OF PORTLAND	WAR. DEED	2457	282	2/13/59	86.09 FEDERAL PROJECT NO. 9-17-001-5912
29	CITY OF PORTLAND	W.H. NICHOLS CO.	WAR. DEED	2990	627	4/4/67	28.77 PARCEL SOLD-FAA RELEASE 2/7/87 AVIG. ESMI. RETAINED
30	BERGEN ASSOCIATES, INC.	CITY OF PORTLAND	EASEMENT	3007	617	6/19/67	5.82 PARCEL D-1 IN 3007/617, 9-17-001-0916
31	ADC BUILDING FUND INC. et. al.	CITY OF PORTLAND	CONDEMNATION	3007	617	6/19/67	1.01 PARCEL B-2 IN 3007/617, 9-17-001-0916
32	OTIS J. & DOROTHY J. AUGUST	CITY OF PORTLAND	WAR. DEED	3909	306	9/17/76	2.25 6-23-0038-10
33	ADC BUILDING FUND INC.	CITY OF PORTLAND	CONDEMNATION	3007	617	6/17/67	0.11 PARCEL B-8 IN 3007/617, 9-17-001-0916
34	ADC BUILDING FUND INC.	CITY OF PORTLAND	CONDEMNATION	3007	617	6/17/67	1.31 PARCEL B-2 IN 3007/617, 9-17-001-0916
35	ADC BUILDING FUND INC.	CITY OF PORTLAND	CONDEMNATION	3007	617	6/17/67	0.32 PARCEL E-1 IN 3007/617, 9-17-001-0916
36	CUMBERLAND COUNTY COMMISSIONERS	CITY OF PORTLAND	DISCONTINUED	21	226	1955	2.30 FEDERAL PROJECT NO. 9-17-001-508
37	BURTON DENSMORE	CITY OF PORTLAND	WAR. DEED	2236	399	7/12/55	0.28 FEDERAL PROJECT NO. 9-17-001-508
38	BURTON DENSMORE	CITY OF PORTLAND	CONDEMNATION	72	256	6/17/55	- FEDERAL PROJECT NO. 9-17-001-508
39	BROOKLAWN MEM. PARK	CITY OF PORTLAND	WAR. DEED	2257	189	9/13/55	5.22 FEDERAL PROJECT NO. 9-17-001-508
40	BROOKLAWN MEM. PARK	CITY OF PORTLAND	CONDEMNATION	72	256	6/17/55	- FEDERAL PROJECT NO. 9-17-001-508
41	CLINTON C. PHINNEY & ROBERT D. SCHWARTZ	CITY OF PORTLAND	Q.C. DEED	2259	429/9	11/28/55	15.2 FEDERAL PROJECT NO. 9-17-001-508
42	CLINTON C. PHINNEY & ROBERT D. SCHWARTZ	CITY OF PORTLAND	CONDEMNATION	72	256	6/17/55	- FEDERAL PROJECT NO. 9-17-001-508
43	CLINTON C. PHINNEY & ROBERT D. SCHWARTZ	CITY OF PORTLAND	Q.C. DEED	2255	428/9	11/28/55	8.03 FEDERAL PROJECT NO. 9-17-001-508
44	CLINTON C. PHINNEY & ROBERT D. SCHWARTZ	CITY OF PORTLAND	CONDEMNATION	72	256	6/17/55	- FEDERAL PROJECT NO. 9-17-001-508
45	JOHN M. DENSMORE	CITY OF PORTLAND	WAR. DEED	2257	271	10/27/55	49 FEDERAL PROJECT NO. 9-17-001-508
46	JOHN M. DENSMORE	CITY OF PORTLAND	CONDEMNATION	72	256	6/17/55	- FEDERAL PROJECT NO. 9-17-001-508
47	JOHN M. DENSMORE	CITY OF PORTLAND	WAR. DEED	2257	271	10/27/55	49 FEDERAL PROJECT NO. 9-17-001-508
48	JOHN M. DENSMORE	CITY OF PORTLAND	CONDEMNATION	72	256	6/17/55	- FEDERAL PROJECT NO. 9-17-001-508
49	JOHN M. DENSMORE	CITY OF PORTLAND	WAR. DEED	2257	271	10/27/55	49 FEDERAL PROJECT NO. 9-17-001-508
50	MOBIL PIPE LINE CO.	CITY OF PORTLAND	Q.C. DEED	3001	721	8/1/68	21.8 FEDERAL PROJECT NO. 9-17-001-508
51	FRANCIS B. EVANS	CITY OF PORTLAND	CONDEMNATION	72	256	6/17/55	- FEDERAL PROJECT NO. 9-17-001-508
52	JOHN E. DENSMORE	CITY OF PORTLAND	WAR. DEED	2241	473	8/8/55	0.50 FEDERAL PROJECT NO. 9-17-001-508
53	JOHN E. DENSMORE	CITY OF PORTLAND	CONDEMNATION	72	256	6/17/55	- FEDERAL PROJECT NO. 9-17-001-508
54	JOHN E. DENSMORE	CITY OF PORTLAND	WAR. DEED	2257	271	10/27/55	49 FEDERAL PROJECT NO. 9-17-001-508
55	MERLE P. CHAPLIN	CITY OF PORTLAND	CONDEMNATION	72	256	6/17/55	24.1 FEDERAL PROJECT NO. 9-17-001-508
56	CHRISTIAN KRUGELUND	CITY OF PORTLAND	CONDEMNATION	72	256	6/17/55	22.9 FEDERAL PROJECT NO. 9-17-001-508

INVENTORY OF PARCELS							
MAP KEY	GRANTOR	GRANTEE	INST.	BOOK	PAGE	DATE	REMARKS
45	SOUTH PORTLAND GARDENS	CITY OF PORTLAND	CONDEMNATION	72	256	6/17/55	1.72 FEDERAL PROJECT NO. 9-17-001-508
46	WALTER & STELLA KORZENIEWSKI	CITY OF PORTLAND	WAR. DEED	2279	228	3/5/55	6.80 FEDERAL PROJECT NO. 9-17-001-508
47	WALTER & STELLA KORZENIEWSKI	CITY OF PORTLAND	CONDEMNATION	72	256	6/17/55	- FEDERAL PROJECT NO. 9-17-001-508
48	FRANK P. CUMMINGS ESTATE	CITY OF PORTLAND	CONDEMNATION	72	256	6/17/55	10.9 FEDERAL PROJECT NO. 9-17-001-508
49	THOMAS L. TOYE & PAT A. TOYE	CITY OF PORTLAND	WAR. DEED	4040	177	6/22/77	0.23 SEE ACTUAL DESCRIPTION IN 2531/103, 6-23-0038-11
50	PORTLAND CITY AIRPORT	CITY OF PORTLAND	Q.C. DEED	1503	217	10/24/35	19.62
51	JAMES C. MORRIS (TRUSTEE)	CITY OF PORTLAND	WAR. DEED	3420	256	6/18/73	4.65
52	KENNETH L. PARKER (PER REP)	CITY OF PORTLAND	WAR. DEED	7715	172	4/7/87	0.5 3-23-0038-19
53	ROBERT D. SCHWARTZ et. al. (TRUSTEE)	CITY OF PORTLAND	EASEMENT	1532	305	6/30/37	- RIGHT TO ENTER TO 'STRIP'
54	EDWARD F. GALLAGHER	CITY OF PORTLAND	EASEMENT	72	256	6/17/55	- FEDERAL PROJECT NO. 9-17-001-508
55	CHAPLIN CORP.	CITY OF PORTLAND	EASEMENT	72	256	6/17/55	- FEDERAL PROJECT NO. 9-17-001-508
56	RAY L. LITTLEFIELD III	CITY OF PORTLAND	WAR. DEED	3894	331	3/14/77	1.0 6-23-0038-11
57	DIAMOND GARDNER CORP.	CITY OF PORTLAND	EASEMENT	3007	617	6/19/67	2.6 PARCEL D-18 - 3007/617 9-17-001-0916
58	NEVER OWNED BY CITY, PARCEL B-4 IN CONDEMNATION DEED 3007/617 IN ERROR SEE AFFIDAVIT 3458/116						
59	RAY L. & JOHAN L. LITTLEFIELD	CITY OF PORTLAND	WAR. DEED	3550	07	5/24/74	0.60
60	AIRPORT REALTY CORP.	CITY OF PORTLAND	CONDEMNATION	3007	617	6/19/67	0.82 PARCEL B-8 IN 3007/617, 9-17-001-0916
61	AIRPORT REALTY CORP.	CITY OF PORTLAND	EASEMENT	3007	617	6/19/67	0.25 PARCEL E-3 IN 3007/617, 9-17-001-0916
62	FRANK P. CUMMINGS ESTATE	CITY OF PORTLAND	CONDEMNATION	72	256	6/17/55	3.79 FEDERAL PROJECT NO. 9-17-001-508
63	PORTLAND CITY AIRPORT	CITY OF PORTLAND	WAR. DEED	1465	141	1/23/35	12.8
64	CITY OF PORTLAND	STATE OF MAINE	CONDEMNATION	11456	276	5/31/94	0.13
65	BROOKLAWN MEMORIAL PARK	CITY OF PORTLAND	CONDEMNATION	3482	231	3/4/81	45.8
66	APEX INC.	CITY OF PORTLAND	QUITCLAIM	10203	192	7/8/92	1.06
67	CITY OF PORTLAND	BROOKLAWN MEM. PARK	Q.C. W/COVEN	13400	006	10/23/97	1.06 PART OF 64
68	BROOKLAWN MEMORIAL PARK	CITY OF PORTLAND	AVIG. ESMI.	13395	309	10/24/97	1.06
69	APEX INC.	CITY OF PORTLAND	QUITCLAIM	10203	192	7/8/92	1.06
70	CITY OF PORTLAND	BROOKLAWN MEM. PARK	Q.C. W/COVEN	13400	006	10/23/97	0.94 PART OF 64
71	BROOKLAWN MEMORIAL PARK	CITY OF PORTLAND	AVIG. ESMI.	13395	309	10/24/97	0.94
72	BROOKLAWN MEMORIAL PARK	CITY OF PORTLAND	Q.C. W/COVEN	13395	295	10/24/97	0.48 3-23-0038-36 SUBJ. TO DRAINAGE ESMI. BK. 8272, PG. 208
73	THOMAS A. TOYE, III	CITY OF PORTLAND	Q.C. W/COVEN	13434	266	10/16/97	1.28
74	THOMAS A. TOYE, III	CITY OF PORTLAND	AVIG. ESMI.	13395	309	10/24/97	6.23
75	TOYE REALTY CORP. LLC	CITY OF PORTLAND	WAR. DEED	16971	184	11/19/01	0.06
76	TOYE REALTY HOLDINGS LLC	CITY OF PORTLAND	Q.C. W/COVEN	3007	617	6/19/67	0.25
77	CITY OF PORTLAND	TOYE AIRPORT PARK LLC	QUITCLAIM	16971	193	11/19/01	0.02
78	MAINE TURNPIKE AUTHORITY	CITY OF PORTLAND	Q.C. W/COVEN	2			