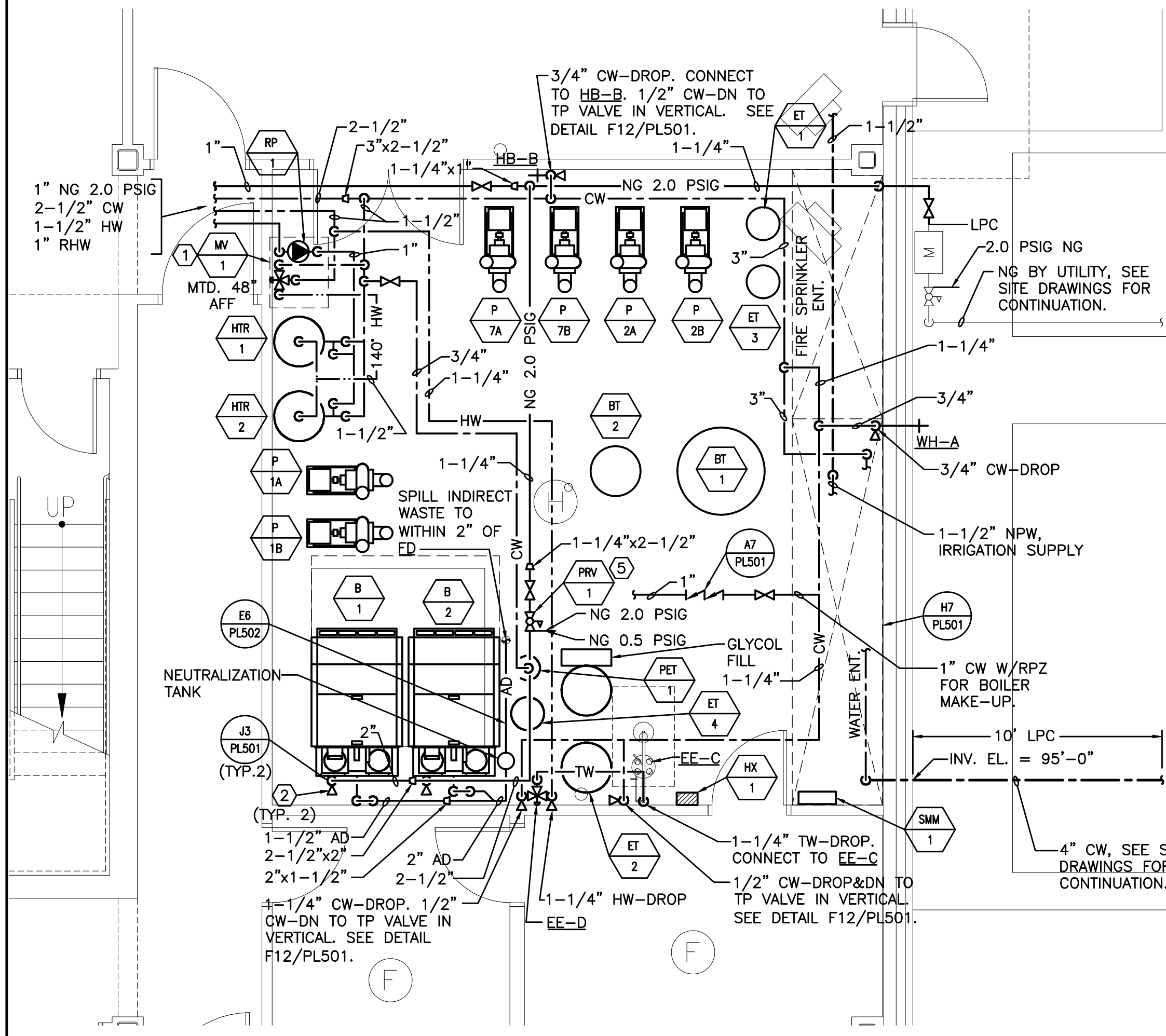


**G7 MEN" AND WOMEN'S TOILET DWV PART PLAN**


1/4" = 1'-0"



**A7 MECHANICAL ROOM PART PLAN**


1/4" = 1'-0"

- NOTE:**  
1. SEE SHEET M-001 FOR LEGEND AND ABBREVIATIONS.
- KEYED NOTES:**
- ① PROVIDE 3/4" CDX PLYWOOD BACKER FOR MIXING VALVE INSTALLATION. PAINT PLYWOOD WITH TWO COATS OF WHITE ENAMEL PAINT.
  - ② 2" NG-DROP WITH SHUT-OFF VALVE. CONNECT TO BOILER GAS TRAIN, PROVIDED BY MANUFACTURER. PROVIDE GAS TRAIN VENT AS/IF NEEDED BY MANUFACTURER. COORDINATE WITH MANUFACTURER'S WRITTEN INSTALLATION INSTRUCTIONS. TERMINATE EACH GAS VENT INDIVIDUALLY AND GOOSENECK, SEE DETAIL A1/PL502.
  - ③ 1-1/2" V-RISE  
 (3) 2" V-RISE.  
 4" S-DROP  
 (2) 2" V-UP&RISE  
 2" V-RISE  
 (2) 2" V-UP  
 4" S-UP&DN  
 2" V-UP&RISE  
 4" V-UP  
 (2) 2" V-UP&RISE
  - ④ BLADDER TANK PROVIDED WITH BOOSTER PUMP PACKAGE.
  - ⑤ PRESSURE REDUCING VALVE SHALL BE INSTALLED PER MANUFACTURER'S WRITTEN INSTRUCTIONS, ACCESSIBLE. PROVIDE SEDIMENT TRAP PRIOR TO VALVE CONNECTION.



**ARCHITECTURE ENGINEERING PLANNING**  
 SMT RIT  
 144 Fore Street/P.O. Box 618  
 Portland, Maine 04104  
 tel. (207) 772-3846  
 fax. (207) 772-1070


PROJECT NORTH



PROJECT TITLE:  
**MAINE TURNPIKE AUTHORITY  
 ADMINISTRATION BUILDING**  
 PORTLAND, MAINE

CURRENT ISSUE STATUS:  
**ISSUED FOR BIDDING/CONSTRUCTION**  
 7-9-07

REV	DESCRIPTION	DATE
0	BIDDING/CONSTRUCTION	7-9-07

GRAPHIC SCALE:  


SCALE: 1/4" = 1'-0"

PROJECT MANAGER: SLB  
 JC/DRAWN BY: TCM/BGG  
 A/E OF RECORD: RMM  
 CAD FILE: PL401-06016  
 PROJECT NO: 06016  
 DATE: 7-9-07

SHEET TITLE:  
**MECHANICAL ROOM  
 PART PLAN**

SHEET No. **PL401**  
 © COPYRIGHT 2007 SMT RIT