

NOTE:

1. SEE SHEET M-001 FOR LEGEND AND ABBREVIATIONS.
2. INSULATE ALL RADIANT FLOOR RUNOUTS WITH 1/2" FLEXIBLE ELASTOMERIC.



PROJECT TITLE:
**MAINE TURNPIKE AUTHORITY
ADMINISTRATION BUILDING**
PORTLAND, MAINE

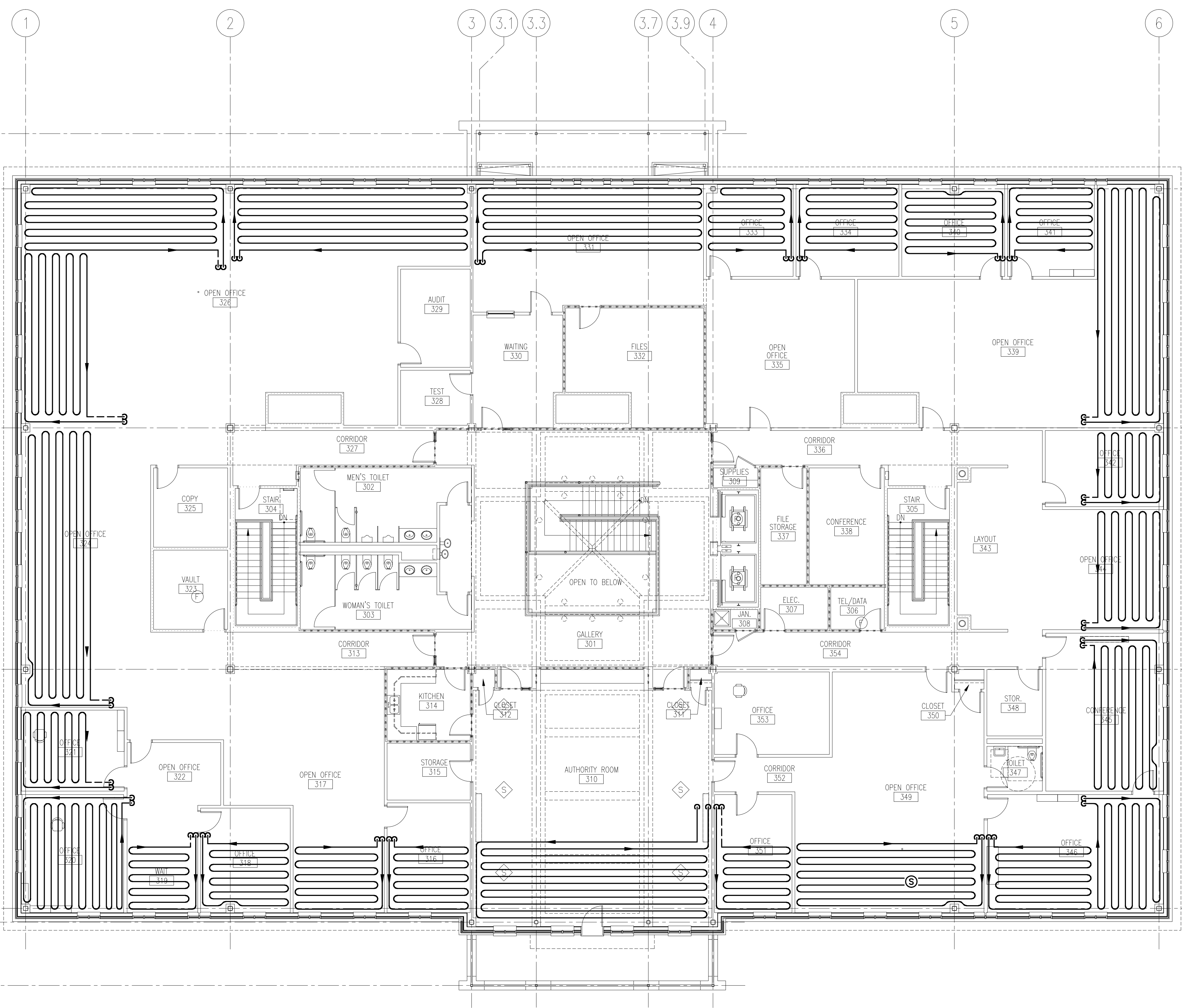
CURRENT ISSUE STATUS:

REV	DESCRIPTION	DATE
0	BIDDING/CONSTRUCTION	7-9-07

GRAPHIC SCALE:
0" 1"

SCALE: 1/8" = 1'-0"
PROJECT MANAGER: SLB
JC/DRAWN BY: TCM/BGG
A/E OF RECORD: RWW
CAD FILE: MP113-06016
PROJECT NO: 06016
DATE: 7-9-07

SHEET TITLE:
**THIRD FLOOR
RADIANT FLOOR
PIPING PLAN**
SHEET No.
MP113
© copyright 2007 SMRT INC.



A1 FLOOR PLAN

1/8" = 1'-0"