

NOTE:

- 1. SEE SHEET M-001 FOR LEGEND AND ABBREVIATIONS.
- 2. INSULATE ALL RADIANT FLOOR RUNOUTS WITH 1/2" FLEXIBLE ELASTOMERIC.

KEYED NOTES:

- ① CONNECT TO RFM-1.
- ② CONNECT TO RFM-2.
- ③ CONNECT TO RFM-3.
- ④ CONNECT TO RFM-4.
- ⑤ CONNECT TO RFM-5.
- ⑥ CONNECT TO RFM-6.
- ⑦ CONNECT TO RFM-7.
- ⑧ CONNECT TO RFM-8.

**SM
RT**

ARCHITECTURE ENGINEERING PLANNING
SWRT

144 Fore Street/P.O. Box 618
Portland, Maine 04104
tel. (207) 772-3846
fax. (207) 772-1070

PROJECT
NORTH



PROJECT TITLE:
**MAINE TURNPIKE AUTHORITY
ADMINISTRATION BUILDING**
PORTLAND, MAINE

CURRENT ISSUE STATUS:
ISSUED FOR BIDDING/CONSTRUCTION
7-9-07

PROJECT TITLE:

REV	DESCRIPTION	DATE
0	BIDDING/CONSTRUCTION	7-9-07

GRAPHIC SCALE:



SCALE: 1/8" = 1'-0"

PROJECT MANAGER: SLB

JC/DRAWN BY: TCM/BGG

A/E OF RECORD: RWW

CAD FILE: MP111-06016

PROJECT NO: 06016

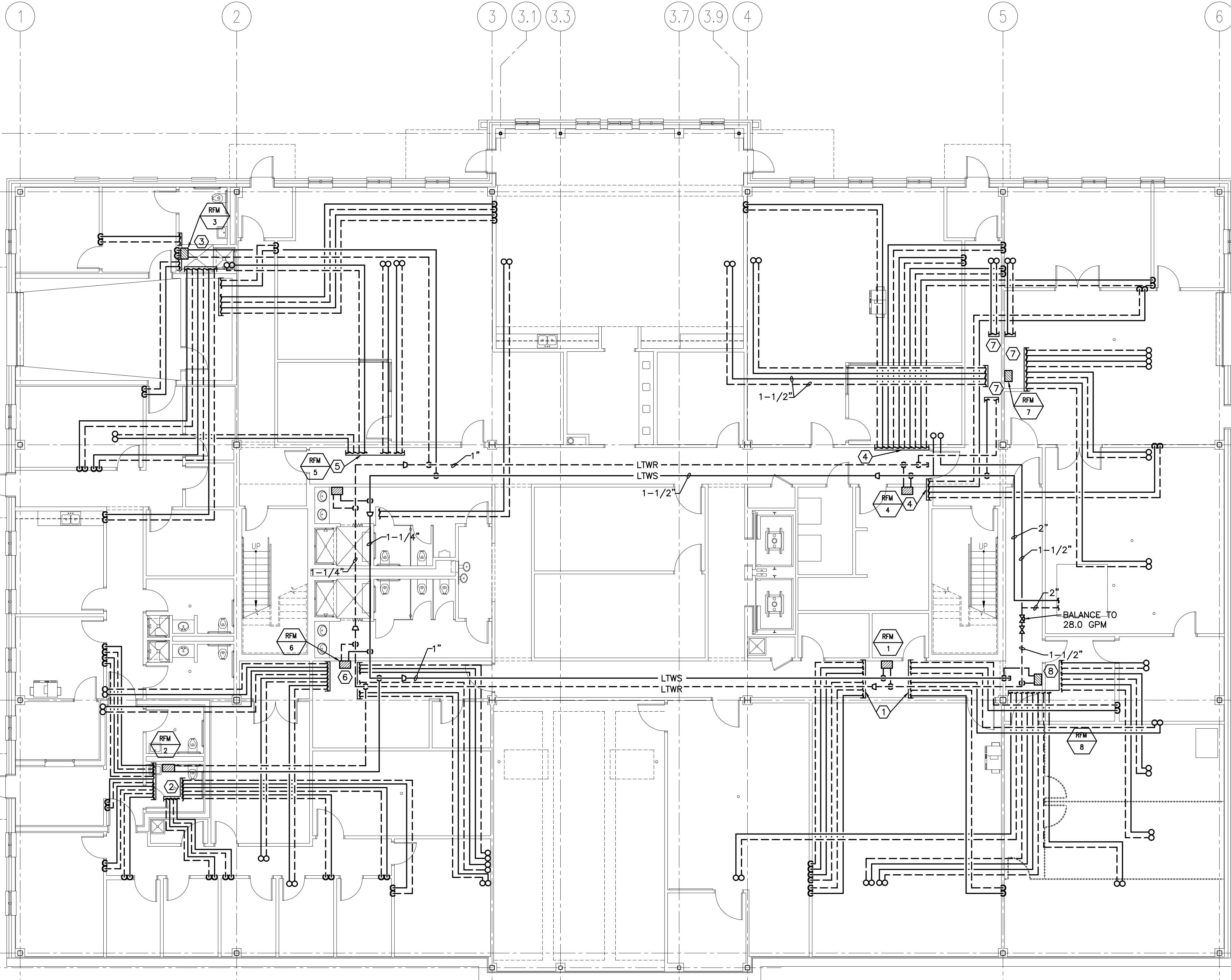
DATE: 7-9-07

SHEET TITLE:

**FIRST FLOOR
RADIANT FLOOR
PIPING PLAN**

SHEET No. **MP111**

© copyright 2007 SMRT



A1 FIRST FLOOR PLAN

1/8" = 1'-0"