

**NOTE:**

1. SEE SHEET M-001 FOR LEGEND AND ABBREVIATIONS.
2. ALL PIPING RUNOUT TO BE 3/4" UNLESS NOTED OTHERWISE.
3. ALL PIPING ROUTED ACROSS CORRIDORS #151 & #164 MUST BE CONTAINED WITHIN THE LIMITS OF HORIZONTAL FIRE-RATED SHAFT LOCATED ABOVE THE SUSPENDED CEILING. COORDINATE LAYOUT OF PIPING ACCORDINGLY WITH THE WORK OF OTHER TRADES.

**SM RT**  
 ARCHITECTURE ENGINEERING PLANNING  
 SWRT  
 144 Fore Street/P.O. Box 618  
 Portland, Maine 04104  
 tel. (207) 772-3846  
 fax. (207) 772-1070



PROJECT TITLE:  
**MAINE TURNPIKE AUTHORITY  
 ADMINISTRATION BUILDING**  
 PORTLAND, MAINE

CURRENT ISSUE STATUS:  
**ISSUED FOR BIDDING/CONSTRUCTION**  
 7-9-07

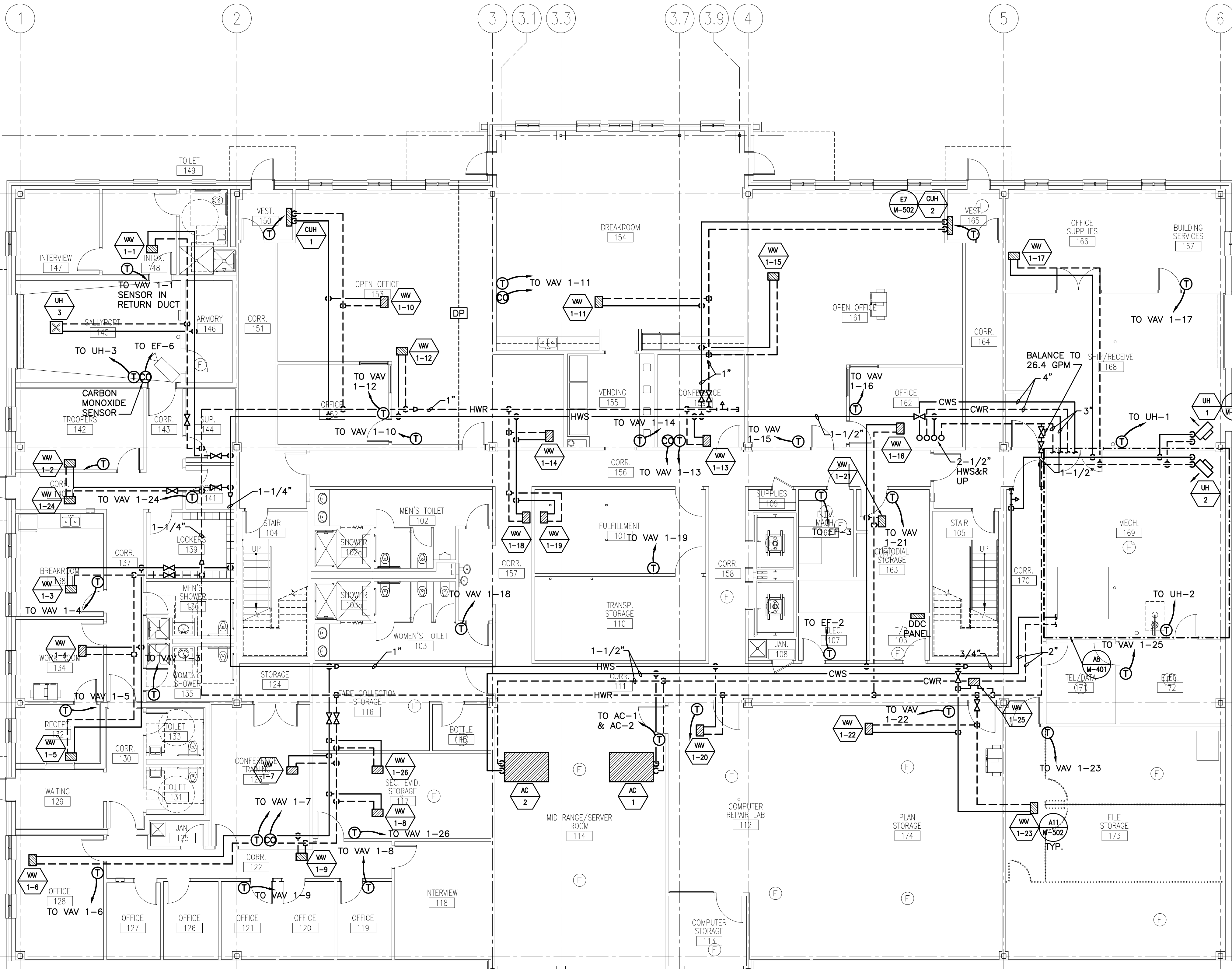
REV	DESCRIPTION	DATE
0	BIDDING/CONSTRUCTION	7-9-07

GRAPHIC SCALE:

SCALE: 1/8" = 1'-0"  
 PROJECT MANAGER: SLB  
 JC/DRAWN BY: TCM/BGG  
 A/E OF RECORD: RWW  
 CAD FILE: MP101-06016  
 PROJECT NO: 06016  
 DATE: 7-9-07

SHEET TITLE:  
**FIRST FLOOR  
 HVAC PIPING  
 PLAN**

SHEET No.  
**MP101**



**A1** FIRST FLOOR PLAN

1/8" = 1'-0"