

PROJECT TITLE: MAINE TURNPIKE AUTHORITY ADMINISTRATION BUILDING PORTLAND, MAINE  
CURRENT ISSUE STATUS: ISSUED FOR BIDDING/CONSTRUCTION 7-9-07

REV	DESCRIPTION	DATE
0	BIDDING/CONSTRUCTION	7-9-07

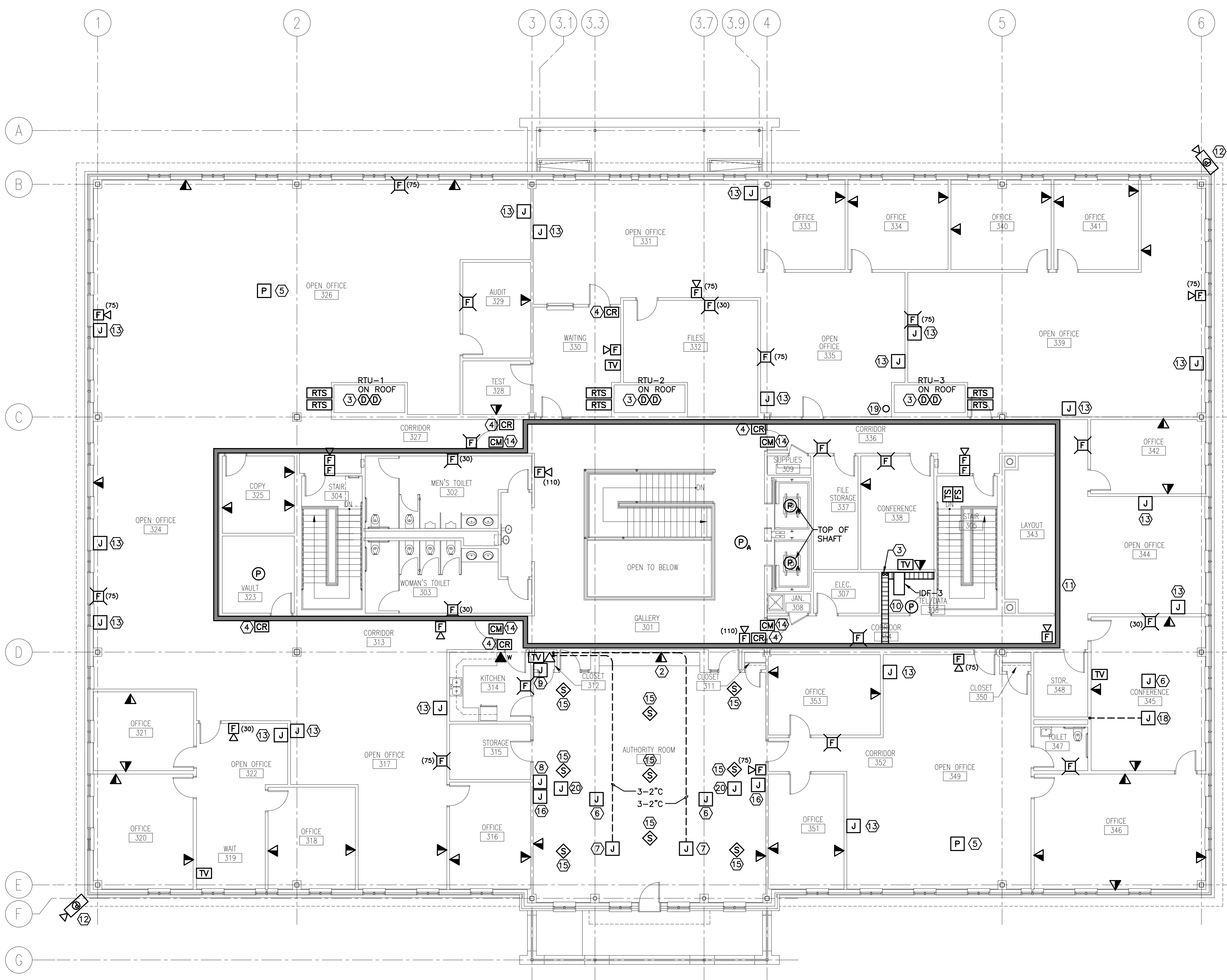
GRAPHIC SCALE:  
0" 1"  
SCALE: 1/8"=1'-0"  
PROJECT MANAGER: SLB  
JC/DRAWN BY: TCM/CDS  
A/E OF RECORD: JPP  
CAD FILE: EY103-06016  
PROJECT NO: 06016  
DATE: 7-9-07  
SHEET TITLE:  
**THIRD FLOOR SYSTEMS PLAN**  
SHEET No. **EY103**  
© copyright 2007 smrt inc.

**NOTE:**

- SEE SHEET E001 FOR LEGEND AND ABBREVIATIONS.
- SEE POWER PLANS FOR PANELBOARD LOCATIONS.

**KEYED NOTES:**

- MOUNT 45" AFF TO CENTER OF DEVICE.
- MOUNT 7" ABOVE COUNTER TO CENTER OF DEVICE.
- FURNISH AND INSTALL DUCT SMOKE DETECTORS IN SUPPLY AND RETURN DUCT FOR ROOF TOP UNIT AUTOMATIC SHUTDOWN.
- PROVIDE 120V CONNECTION TO CARD READER SYSTEM TRANSFORMER PROVIDED BY SECURITY CONTRACTOR. PROVIDE 4" SQUARE JUNCTION BOX ABOVE DOOR W/ 1/2" CONDUIT STUBBED INTO DOOR JAM AND 1/2" CONDUIT TO A JUNCTION BOX 48" AFF FOR EACH CARD READER. COORDINATE W/ SECURITY CONTRACTOR.
- DUAL SERVICE ALUMINUM POWER POLE FOR ROUTING OF TEL/DATA CABLING TO OFFICE FURNITURE. FURNISH AND INSTALL (2) VOICE/DATA DEVICE LOCATIONS PER WORKSTATION UTILIZING FURNITURE RACEWAY AND DEVICE BACKBOXES. COORDINATE W/ FURNITURE INSTALLER.
- LOCATION OF A/V SYSTEM PROJECTOR. PROVIDE SYSTEM CABLING AND CONNECTIONS AS DESCRIBED IN SECTION 16800 AUDIO VISUAL SYSTEMS.
- DUAL SERVICE FLOORBOX AS SPECIFIED ON EP103. PROVIDE (1) 2" TEL/DATA AND (2) 2" SPARE STUBBED UP 24" AFF IN CLOSET 312 FOR TEL/DATA, A/V, AND FUTURE SYSTEMS CABLING. PROVIDE EIGHT DATA OUTLET TERMINATIONS INSTALLED IN A TABLE MOUNTED SERVICE BOX FURNISHED BY OTHERS. COORDINATE CABLE ROUTING FROM FLOORBOX TO DEVICES W/ ARCHITECT, OWNER, AND TABLE INSTALLER.
- LOCATION OF WALL A/V TOUCH PANEL. FURNISH AND INSTALL 4" SQUARE DEEP JUNCTION BOX AT 48" AFF W/ 1" CONDUIT STUBBED ABOVE ACCESSIBLE CEILING FOR ROUTING OF SYSTEM CABLING AND CONNECTIONS AS DESCRIBED IN SECTION 16800 AUDIO VISUAL SYSTEMS.
- LOCATION OF A/V SYSTEM HEAD END EQUIPMENT AND COMPUTER WORKSTATION. PROVIDE 4" SQUARE DEEP JUNCTION BOX 45" AFF W/ 1-1/4" CONDUIT STUBBED ABOVE AUTHORITY ROOM ACCESSIBLE CEILING FOR ROUTING OF SYSTEMS CABLING AND CONNECTIONS AS DESCRIBED IN SECTION 16800 AUDIO VISUAL SYSTEMS.
- FURNISH AND INSTALL 3" DEEP, 12" WIDE LADDER TYPE ALUMINUM CABLE TRAY WITH 9" RUNG SPACING CEILING SUSPENDED MIN. 12" BELOW DECKING AND ABOVE ACCESSIBLE CEILINGS (B-LINE SERIES 1 OR EQUAL). PROVIDE CEILING HANGERS AS REQUIRED AND RECOMMENDED BY MANUFACTURER.
- FURNISH AND INSTALL 4" DEEP, 8" WIDE WIRE BASKET TYPE STEEL CABLE TRAY WITH 9" RUNG SPACING WALL MOUNTED MIN. 12" BELOW DECKING AND ABOVE ACCESSIBLE CEILINGS (B-LINE WB SERIES OR EQUAL). PROVIDE CEILING HANGERS FOR SUPPORT ACROSS CORRIDORS AS REQUIRED AND RECOMMENDED BY MANUFACTURER.
- FURNISH AND INSTALL CCTV EXTERIOR PTZ CAMERA MOUNTED TO TOP OF BUILDING WALL. PROVIDE 120V POWER FROM EPP3-4 TO CAMERA POWER SUPPLY. SEE SHEET EY652 FOR ADDITIONAL INFORMATION.
- PROVIDE TEL/DATA SERVICE TO OFFICE FURNITURE. FURNISH AND INSTALL 4" SQUARE JUNCTION BOX W/ 1" CONDUIT TO ABOVE ACCESSIBLE CEILING. PROVIDE FOR (2) TEL/DATA DEVICE LOCATIONS PER WORKSTATION. COORDINATE FURNITURE CABLE RACEWAY AND LOCATION W/ ARCHITECT AND FURNITURE INSTALLER.
- ACCESS CONTROLLED DOOR W/ MAGNETIC LOCKS AND INTEGRAL ELECTRIC HOLD OPEN CLOSER. PROVIDE FIRE ALARM SYSTEM CONTROL MODULES FOR MAGNETIC LOCK RELEASE AND HOLD OPEN RELEASE DURING ALARM. COORDINATE W/ ACCESS CONTROL SYSTEM AND DOOR HARDWARE INSTALLERS.
- LOCATION OF A/V SYSTEM SPEAKER. PROVIDE BACKBOX, SYSTEM CABLING, AND CONNECTIONS AS DESCRIBED IN SECTION 16800 AUDIO VISUAL SYSTEMS.
- LOCATION OF WALL A/V CONNECTIVITY PANEL. FURNISH AND INSTALL 4" SQUARE DEEP JUNCTION BOX AT 18" AFF W/ 1" CONDUIT STUBBED ABOVE ACCESSIBLE CEILING FOR ROUTING OF SYSTEM CABLING AND CONNECTIONS AS DESCRIBED IN SECTION 16800 AUDIO VISUAL SYSTEMS.
- PROVIDE (3)-4" CONDUIT SLEEVES THROUGH FLOOR DECK WITH 4" EXPOSURE ABOVE FINISHED FLOOR AND BELOW DECKING. PROVIDE REMOVABLE FIRESTOP CAPS ON BOTH ENDS.
- DUAL SERVICE FLOORBOX AS SPECIFIED ON EP103. PROVIDE (1)1" TEL/DATA AND (1) 2" A/V CONDUIT ROUTED TO ABOVE RM 345 ACCESSIBLE CEILING FOR TEL/DATA, A/V, AND FUTURE SYSTEMS CABLING. PROVIDE ONE TEL/DATA OUTLET TERMINATION INSTALLED IN A TABLE MOUNTED SERVICE BOX FURNISHED BY OTHERS. COORDINATE CABLE ROUTING FROM FLOORBOX TO DEVICES W/ ARCHITECT, OWNER, AND TABLE INSTALLER.
- WIRELESS CLOCK SYSTEM GPS ANTENNA MOUNTED TO MECHANICAL ROOF TOP UNIT RTU-1 ON ROOF ABOVE. COORDINATE EXACT ROUTING, MOUNTING, AND LOCATIONS W/ OWNER, ARCHITECT, MECHANICAL CONTRACTOR, AND AFFECTED TRADES.
- DUAL SERVICE FLOORBOX AS SPECIFIED ON EP103. PROVIDE (1)1-1/2" CONDUIT W/ PULLSTRINGS ROUTED TO ABOVE RM 345 ACCESSIBLE CEILING FOR A/V AND FUTURE SYSTEMS CABLING. COORDINATE CABLE ROUTING FROM FLOORBOX TO DEVICES W/ ARCHITECT, OWNER, AND LECTERN INSTALLER.



**A1 FLOOR PLAN**

1/8" = 1'-0"