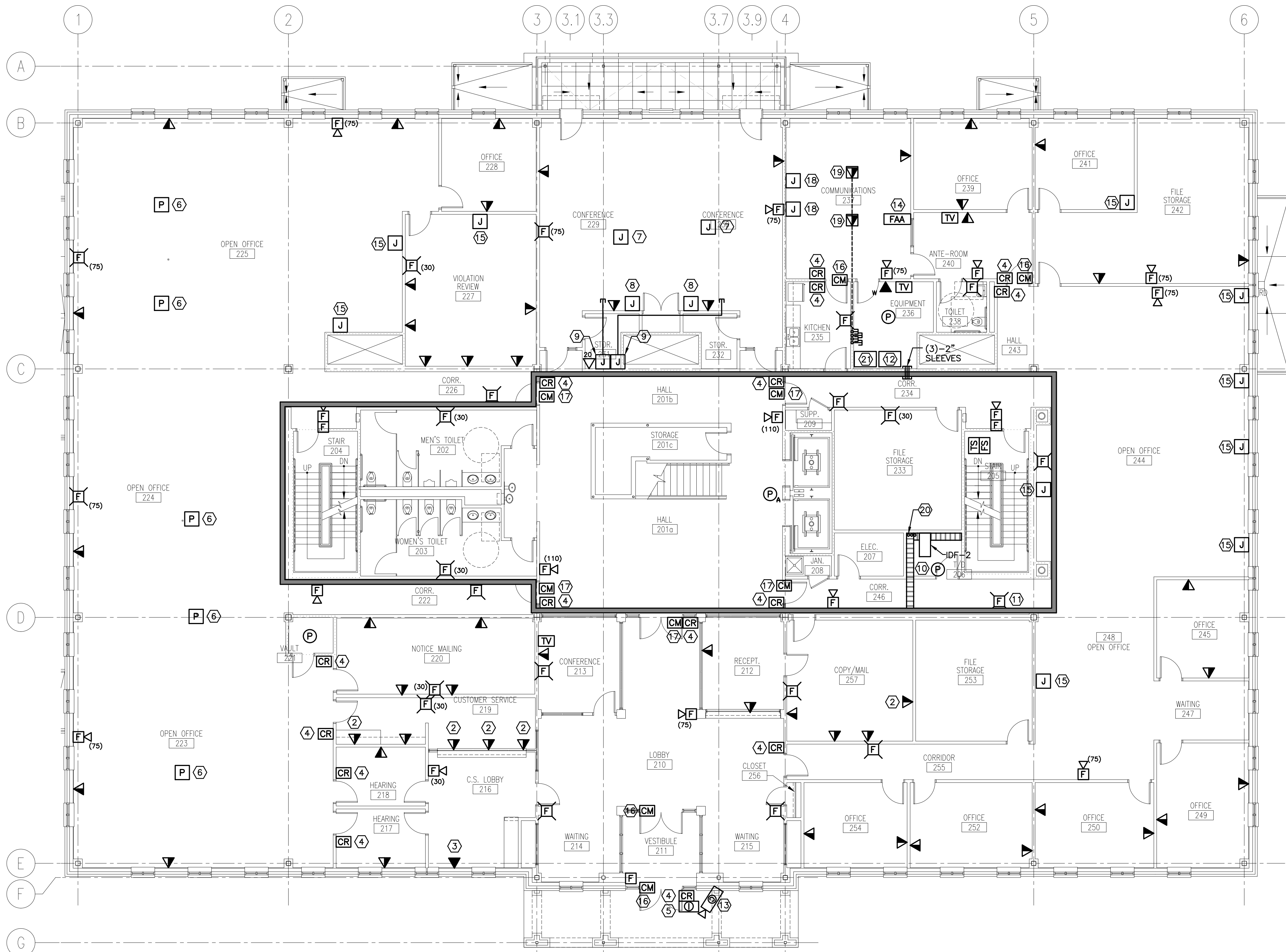


NOTE:

- SEE SHEET E001 FOR LEGEND AND ABBREVIATIONS.
- SEE POWER PLANS FOR PANELBOARD LOCATIONS.

KEYED NOTES:

- MOUNT 45" AFF TO CENTER OF DEVICE.
- MOUNT 7" ABOVE COUNTER TO CENTER OF DEVICE.
- PROVIDE DEDICATED VOICE CONNECTION TO ATM MACHINE. COORDINATE W/ INSTALLER AND OWNER.
- PROVIDE 120V CONNECTION FROM EPP2-19 TO CARD READER SYSTEM TRANSFORMER PROVIDED BY SECURITY CONTRACTOR. PROVIDE 4" SQUARE JUNCTION BOX ABOVE DOOR W/ 1/2" CONDUIT STUBBED INTO DOOR JAM AND 1/2" CONDUIT TO A JUNCTION BOX 48" AFF FOR EACH CARD READER. COORDINATE W/ SECURITY CONTRACTOR.
- EXTERIOR INTERCOM CALL STATION. FURNISH AND INSTALL ALPHONE #IP-EWST IP ADDRESSABLE INTERCOM MODULE AND #IF-DA DOOR STATION. PROVIDE 4" WEATHERPROOF JUNCTION BOX W/ 3/4" CONDUIT STUBBED TO ABOVE ACCESSIBLE CEILING. PROVIDE VOICE/DATA DROP FOR INTEGRATION TO OWNER'S IP BASED PHONE SYSTEM. COORDINATE W/ OWNER AND MANUFACTURER'S RECOMMENDATIONS.
- DUAL SERVICE ALUMINUM POWER POLE FOR ROUTING OF TEL/DATA CABLING TO OFFICE FURNITURE. FURNISH AND INSTALL (2) VOICE/DATA DEVICE LOCATION PER WORKSTATION UTILIZING FURNITURE RACEWAY AND DEVICE BACKBOXES. COORDINATE W/ FURNITURE INSTALLER.
- LOCATION OF A/V SYSTEM PROJECTOR. PROVIDE SYSTEM CABLING AND CONNECTIONS AS DESCRIBED IN SECTION 16800 AUDIO VISUAL SYSTEMS.
- LOCATION OF WALL A/V TOUCH PANEL. FURNISH AND INSTALL 4" SQUARE DEEP JUNCTION BOX AT 48" AFF W/ 1" CONDUIT STUBBED ABOVE ACCESSIBLE CEILING FOR ROUTING OF SYSTEM CABLING AND CONNECTIONS AS DESCRIBED IN SECTION 16800 AUDIO VISUAL SYSTEMS.
- LOCATION OF A/V SYSTEM HEAD END EQUIPMENT AND COMPUTER WORKSTATION. PROVIDE 4" SQUARE DEEP JUNCTION BOX 45" AFF W/ 1-1/4" CONDUIT STUBBED ABOVE CONFERENCE ROOM ACCESSIBLE CEILING FOR ROUTING OF SYSTEM CABLING AND CONNECTIONS AS DESCRIBED IN SECTION 16800 AUDIO VISUAL SYSTEMS.
- FURNISH AND INSTALL 3" DEEP, 12" WIDE LADDER TYPE ALUMINUM CABLE TRAY WITH 9" RUNG SPACING CEILING SUSPENDED MIN. 12" BELOW DECKING AND ABOVE ACCESSIBLE CEILINGS (B-LINE SERIES 1 OR EQUAL). PROVIDE CEILING HANGERS AS REQUIRED AND RECOMMENDED BY MANUFACTURER.
- FURNISH AND INSTALL 4" DEEP, 8" WIDE WIRE BASKET TYPE STEEL CABLE TRAY WITH 9" RUNG SPACING WALL MOUNTED MIN. 12" BELOW DECKING AND ABOVE ACCESSIBLE CEILINGS (B-LINE WB SERIES OR EQUAL). PROVIDE CEILING HANGERS FOR SUPPORT ACROSS CORRIDORS AS REQUIRED AND RECOMMENDED BY MANUFACTURER.
- CCTV SYSTEM HEAD END EQUIPMENT AND DVR. COORDINATE EXACT INSTALLATION AND LOCATION WITH OWNER. SEE EY652 FOR ADDITIONAL INFORMATION.
- FURNISH AND INSTALL FIXED EXTERIOR CCTV CAMERA WALL MOUNTED UNDER CANOPY. PROVIDE 120V POWER CONNECTION FROM EPP2-20 TO CAMERA POWER SUPPLY AS REQUIRED. SEE SHEET EY651 FOR CCTV RISER DIAGRAM. COORDINATE EXACT MOUNTING LOCATION AND AIMING WITH OWNER AND ARCHITECT.
- COORDINATE LOCATION OF REMOTE FIRE ALARM ANNUNCIATOR WITH COMMUNICATIONS STAFF, ARCHITECT, AND OWNER.
- PROVIDE TEL/DATA SERVICE TO OFFICE FURNITURE. FURNISH AND INSTALL 4" SQUARE JUNCTION BOX W/ 1" CONDUIT TO ABOVE ACCESSIBLE CEILING. PROVIDE FOR (2) TEL/DATA DEVICE LOCATION PER WORKSTATION. COORDINATE FURNITURE CABLE RACEWAY AND LOCATION W/ ARCHITECT AND FURNITURE INSTALLER.
- PROVIDE FIRE ALARM SYSTEM CONTROL MODULE FOR ACCESS CONTROLLED EGRESS DOOR MAGNETIC LOCK RELEASE UPON ALARM. COORDINATE INTERCONNECTION W/ ACCESS CONTROL SYSTEM AND DOOR HARDWARE INSTALLERS.
- ACCESS CONTROLLED DOOR W/ MAGNETIC LOCKS AND INTEGRAL ELECTRIC HOLD OPEN CLOSER. PROVIDE FIRE ALARM SYSTEM CONTROL MODULES FOR MAGNETIC LOCK RELEASE AND HOLD OPEN RELEASE DURING ALARM. COORDINATE W/ ACCESS CONTROL SYSTEM AND DOOR HARDWARE INSTALLERS.
- FURNISH AND INSTALL 4" SQUARE DEEP JUNCTION BOX W/ 1 1/4" CONDUIT AND PULL STRING STUBBED ABOVE EQUIPMENT 236 ACCESSIBLE CEILING.
- DUAL SERVICE FLOORBOX AS SPECIFIED ON EP102. PROVIDE (1)-1" TEL/DATA AND (2) 1-1/4" SPARE CONDUITS ROUTED TO ABOVE EQUIPMENT 236 ACCESSIBLE CEILING FOR TEL/DATA AND FUTURE SYSTEMS CABLING. PROVIDE 2 VOICE AND 2 DATA DEVICES. INSTALLED IN A SINGLE GANG SPACE WITHIN THE FLOORBOX.
- PROVIDE (3)-4" CONDUIT SLEEVES THROUGH FLOOR DECK WITH 4" EXPOSURE ABOVE FINISHED FLOOR AND BELOW DECKING. PROVIDE REMOVABLE FIRESTOP CAPS ON BOTH ENDS.
- WIRELESS CLOCK SYSTEM TRANSMITTER UNIT. PROVIDE 1" CONDUIT TO ROOF FOR GPS ANTENNA. COORDINATE EXACT INSTALLATION AND LOCATION WITH OWNER. SEE EY652 FOR ADDITIONAL INFORMATION.



SM RT

ARCHITECTURE ENGINEERING PLANNING

144 Fore Street, P.O. Box 618
Portland, Maine 04104
Tel. (207) 772-3846
Fax. (207) 772-1070

PROJECT NORTH

PROJECT TITLE: MAINE TURNPIKE AUTHORITY ADMINISTRATION BUILDING PORTLAND, MAINE

CURRENT ISSUE STATUS: ISSUED FOR BIDDING/CONSTRUCTION 7-9-07

REV	DESCRIPTION	DATE
0	BIDDING/CONSTRUCTION	7-9-07

GRAPHIC SCALE: 0" = 1"

SCALE: 1/8" = 1'-0"

PROJECT MANAGER: SLB
JC/DRAWN BY: TCM/CDS
A/E OF RECORD: JPP
CAD FILE: EY102-06016
PROJECT NO: 06016
DATE: 7-9-07

SHEET TITLE: SECOND FLOOR SYSTEMS PLAN

SHEET No. EY102

A1 FLOOR PLAN

1/8" = 1'-0"