

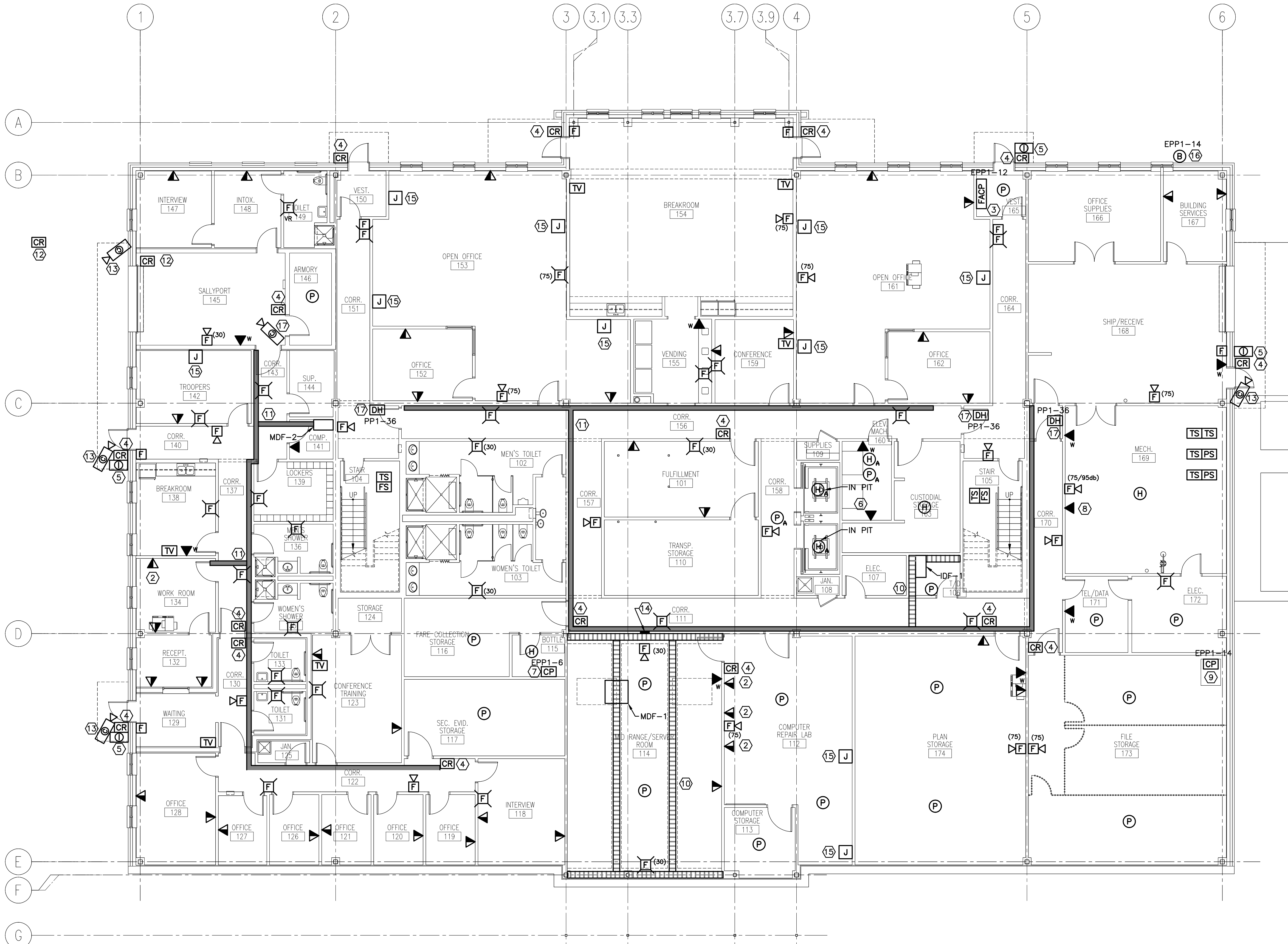
REV	DESCRIPTION	DATE
0	BIDDING/CONSTRUCTION	7-9-07

NOTE:

- SEE SHEET E001 FOR LEGEND AND ABBREVIATIONS.
- SEE POWER PLANS FOR PANELBOARD LOCATIONS.

KEYED NOTES:

- MOUNT 45" AFF TO CENTER OF DEVICE.
- MOUNT 7" ABOVE COUNTER TO CENTER OF DEVICE.
- PROVIDE 120V CONNECTION TO FIRE ALARM CONTROL PANEL AS INDICATED. PROVIDE (2) DEDICATED VOICE CONNECTIONS FOR DIGITAL COMMUNICATOR.
- PROVIDE 120V CONNECTION FROM EPP1-19 TO CARD READER SYSTEM TRANSFORMER PROVIDED BY SECURITY CONTRACTOR. PROVIDE 4" SQUARE JUNCTION BOX ABOVE DOOR W/ 1/2" CONDUIT STUBBED INTO DOOR JAM AND 1/2" CONDUIT TO A JUNCTION BOX 48" AFF FOR EACH CARD READER. COORDINATE W/ SECURITY CONTRACTOR.
- EXTERIOR INTERCOM CALL STATION. FURNISH AND INSTALL AIPHONE #IP-EWST IP ADDRESSABLE INTERCOM MODULE AND #IF-DA DOOR STATION. PROVIDE 4" WEATHERPROOF JUNCTION BOX W/ 3/4" CONDUIT STUBBED TO ABOVE ACCESSIBLE CEILING. PROVIDE VOICE/DATA DROP FOR INTEGRATION TO OWNER'S IP BASED PHONE SYSTEM. COORDINATE W/ OWNER AND MANUFACTURER'S RECOMMENDATIONS.
- PROVIDE (2) DEDICATED VOICE CONNECTIONS TO ELEVATOR CONTROLLER. COORDINATE WITH MECHANICAL CONTRACTOR AND OWNER.
- PROVIDE FIRE ALARM SYSTEM CONNECTIONS TO GASEOUS FIRE PROTECTION SYSTEM FLOW SWITCH AND CONTROL PANEL AS REQUIRED. PROVIDE 120V CONNECTION TO SYSTEM CONTROL PANEL AS INDICATED. COORDINATE W/ FIRE PROTECTION CONTRACTOR.
- PROVIDE (2) DEDICATED VOICE CONNECTIONS TO MECHANICAL CONTROL PANEL. COORDINATE W/ MECHANICAL CONTRACTOR AND OWNER.
- PROVIDE FIRE ALARM SYSTEM CONNECTION TO DOUBLE PRE-ACTION FIRE PROTECTION SYSTEM AND AS REQUIRED. PROVIDE 120V CONNECTION TO SYSTEM CONTROL PANEL AND ASSOCIATED AIR COMPRESSOR. COORDINATE W/ FIRE PROTECTION CONTRACTOR.
- FURNISH AND INSTALL 3" DEEP, 12" WIDE LADDER TYPE ALUMINUM CABLE TRAY WITH 9" RUNG SPACING CEILING SUSPENDED MIN. 12" BELOW DECKING AND ABOVE ACCESSIBLE CEILINGS (B-LINE SERIES 1 OR EQUAL). PROVIDE CEILING HANGERS AS REQUIRED AND RECOMMENDED BY MANUFACTURER.
- FURNISH AND INSTALL 4" DEEP, 8" WIDE WIRE BASKET TYPE STEEL CABLE TRAY WITH 9" RUNG SPACING WALL MOUNTED MIN. 12" BELOW DECKING AND ABOVE ACCESSIBLE CEILINGS (B-LINE WB SERIES OR EQUAL). PROVIDE CEILING HANGERS FOR SUPPORT ACROSS CORRIDORS AS REQUIRED AND RECOMMENDED BY MANUFACTURER.
- PROVIDE 120V CONNECTION FROM EPP1-19 TO CARD READER SYSTEM TRANSFORMER PROVIDED BY SECURITY CONTRACTOR. PROVIDE 4" SQUARE JUNCTION BOX ABOVE DOOR W/ 1/2" CONDUIT STUBBED INTO DOOR JAM AND 1/2" CONDUIT TO A JUNCTION BOX 48" AFF. FROM THIS JUNCTION BOX, ROUTE A 1/2" UNDERGROUND CONDUIT TO THE REMOTE CARD READER PEDESTAL LOCATION. EXTERIOR UNIT SHALL OPEN DOOR, INTERIOR UNIT SHALL ENABLE DOOR PUSH BUTTON STATION. COORDINATE W/ SECURITY CONTRACTOR AND DOOR INSTALLER.
- FURNISH AND INSTALL FIXED EXTERIOR CCTV CAMERA WALL MOUNTED UNDER CANOPY. SEE SHEET EY651 FOR CCTV RISER DIAGRAM. PROVIDE 120V POWER CONNECTION FROM EPP1-21 TO CAMERA POWER SUPPLY AS REQUIRED. COORDINATE EXACT MOUNTING LOCATION AND AIMING WITH OWNER AND ARCHITECT.
- FURNISH AND INSTALL 2 HOUR RATED AIRTIGHT WALL PENETRATION DEVICE FOR CABLE TRAY. CDS SEALING SYSTEMS FSP SERIES MULTICABLE PENETRATION FIRE STOP UNIT OR EQUAL. PROVIDE SILICON BASED SEALANT FOR AIRTIGHT INSTALLATION PER MANUFACTURER'S RECOMMENDATIONS.
- PROVIDE TEL/DATA SERVICE TO OFFICE FURNITURE. FURNISH AND INSTALL 4" SQUARE JUNCTION BOX W/ 1/2" CONDUIT TO ABOVE ACCESSIBLE CEILING. PROVIDE FOR ONE TEL/ DATA DEVICE PER WORKSTATION. COORDINATE FURNITURE CABLE RACEWAY AND LOCATION W/ ARCHITECT AND FURNITURE INSTALLER.
- PROVIDE 120V CONNECTION FOR SPRINKLER SYSTEM ELECTRIC BELL AS INDICATED. PROVIDE WIRING TO MECH 169 EQUIPMENT AS REQUIRED COORDINATE WITH FURNITURE INSTALLER.
- FURNISH AND INSTALL FIXED INTERIOR CCTV CAMERA WALL MOUNTED ABOVE DOORWAY. SEE SHEET EY651 FOR CCTV RISER DIAGRAM. PROVIDE 120V POWER CONNECTION FROM EPP1-21 TO CAMERA POWER SUPPLY AS REQUIRED. COORDINATE EXACT MOUNTING LOCATION AND AIMING WITH OWNER AND ARCHITECT.



A1 FIRST FLOOR PLAN

1/8" = 1'-0"