

NOTE:

1. SEE SHEET E001 FOR LEGEND AND ABBREVIATIONS.

KEYED NOTES:

- ① MOUNT 45" AFF TO CENTER OF DEVICE.
- ② MOUNT 7" ABOVE COUNTER TO CENTER OF DEVICE.
- ③ FURNISH AND INSTALL DUAL SERVICE ALUMINUM POWER POLE FOR 120V CONNECTIONS TO PREWIRED OFFICE FURNITURE. (WIREMOLD #NP600 SERIES OR EQUAL). COMBINE AND BALANCE PREWIRED CIRCUITING AS REQUIRED TO CONNECT TO BRANCH CIRCUITS AS INDICATED. MAX. 8 DUPLEX DEVICES OR 3 WORKSTATIONS PER CIRCUIT. COORDINATE EXACT REQUIREMENTS, WIRING AND LOCATIONS W/ OWNER, ARCHITECT, AND OFFICE FURNITURE INSTALLER. SEE SHEET EY103 FOR ADDITIONAL INFORMATION.
- ④ PROVIDE 120V HARDWIRED CONNECTION TO ELECTRIC WATER COOLER. COORDINATED W/ MECHANICAL CONTRACTOR.
- ⑤ PROVIDE 120V CEILING MOUNT RECEPTACLE CONNECTION FOR PROJECTOR EQUIPMENT.
- ⑥ FURNISH AND INSTALL CAST IN PLACE MULTI-SERVICE RECESSED FLOORBOX (WALKER #RFB4 SERIES OR EQUAL) W/ CARPET COVER ASSEMBLY. PROVIDE 1" CONDUIT TO PP3 FOR POWER WIRING. PROVIDE FLEXIBLE POWER CONNECTION EXTENDED FROM FLOORBOX TO TABLE MOUNT RECEPTACLE DEVICES FURNISHED BY OTHERS. COORDINATE EXACT LOCATIONS AND ROUTING W/ ARCHITECT, OWNER AND TABLE INSTALLER. SEE SHEET EY103 FOR ADDITIONAL INFORMATION.
- ⑦ PROVIDE 120V CONNECTION TO MOTORIZED PROJECTION SCREEN IN 4" SQUARE JUNCTION BOX ABOVE ACCESSIBLE CEILING. INSTALL & LABEL CONTROL SWITCH FURNISHED W/ EQUIPMENT. COORDINATE EXACT LOCATIONS W/ OWNER AND ARCHITECT.
- ⑧ PROVIDE 4" SQUARE JUNCTION BOX FOR 120V CONNECTIONS TO PREWIRED OFFICE FURNITURE. EACH BRANCH CIRCUIT SHALL HAVE A DEDICATED NEUTRAL CONDUCTOR. COMBINE AND BALANCE PREWIRED DEVICE CIRCUITS AS REQUIRED TO CONNECT TO BRANCH CIRCUITS AS INDICATED. MAX. 8 DUPLEX DEVICES OR 3 WORKSTATIONS PER CIRCUIT. COORDINATE EXACT REQUIREMENTS, WIRING AND LOCATIONS W/ OWNER, ARCHITECT, AND OFFICE FURNITURE INSTALLER. SEE SHEET EY103 FOR ADDITIONAL INFORMATION.
- ⑨ PROVIDE 120V HARDWIRED OR RECEPTACLE CONNECTION TO AUTOMATIC FLUSH VALVE AND/OR FAUCET POWER SUPPLIES FURNISHED BY THE PLUMBING CONTRACTOR. COORDINATE LOCATIONS AND REQUIREMENTS W/ ARCHITECT AND PLUMBING CONTRACTOR.
- ⑩ FURNISH AND INSTALL CAST IN PLACE MULTI-SERVICE RECESSED FLOORBOX (WALKER #RFB4 SERIES OR EQUAL) W/ 1 DUPLEX RECEPTACLE CARPET COVER ASSEMBLY FOR LECTERN SERVICES. PROVIDE 1" CONDUIT TO PP3 FOR POWER WIRING. COORDINATE EXACT LOCATIONS AND ROUTING W/ ARCHITECT, OWNER AND LECTERN INSTALLER. SEE SHEET EY103 FOR ADDITIONAL INFORMATION.



PROJECT TITLE: MAINE TURNPIKE AUTHORITY ADMINISTRATION BUILDING
PORTLAND, MAINE
CURRENT ISSUE STATUS: ISSUED FOR BIDDING/CONSTRUCTION
7-9-07

REV	DESCRIPTION	DATE
0	BIDDING/CONSTRUCTION	7-9-07

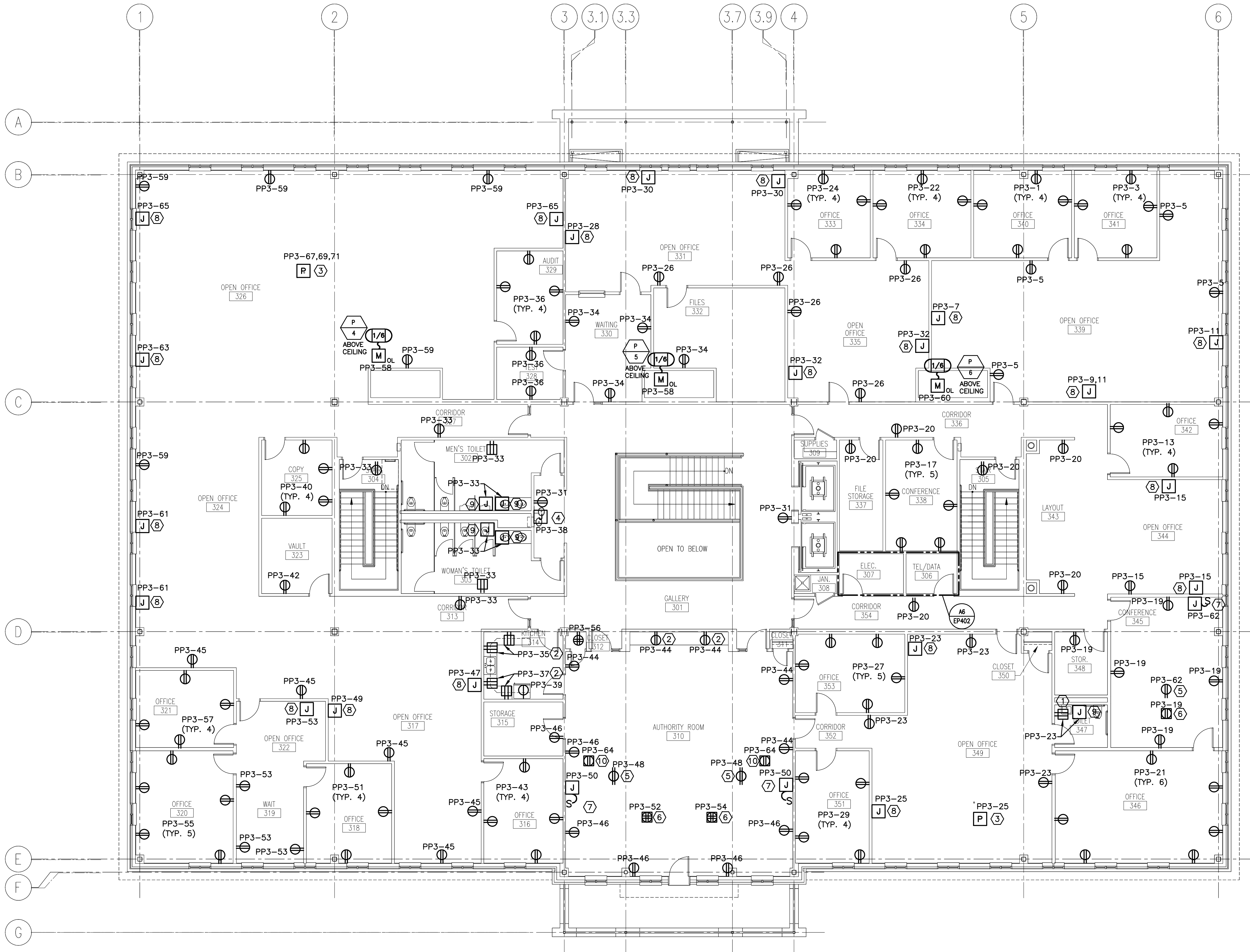
GRAPHIC SCALE:
0" 1"

SCALE: 1/8" = 1'-0"

PROJECT MANAGER: SLB
JC/DRAWN BY: TCM/CDS
A/E OF RECORD: JPP
CAD FILE: EP103-06016
PROJECT NO: 06016
DATE: 7-9-07

SHEET TITLE:
THIRD FLOOR POWER PLAN

SHEET No. **EP103**
© copyright 2007 smart inc.



A1 FLOOR PLAN

1/8" = 1'-0"