



REV	DESCRIPTION	DATE
0	BIDDING/CONSTRUCTION	7-9-07

GRAPHIC SCALE:
0" 1"

SCALE: 1/8" = 1'-0"

PROJECT MANAGER: SLB
JC/DRAWN BY: TCM/CDS
A/E OF RECORD: JPP
CAD FILE: EP102-06016
PROJECT NO: 06016
DATE: 7-9-07

SHEET TITLE:
**SECOND FLOOR
POWER PLAN**

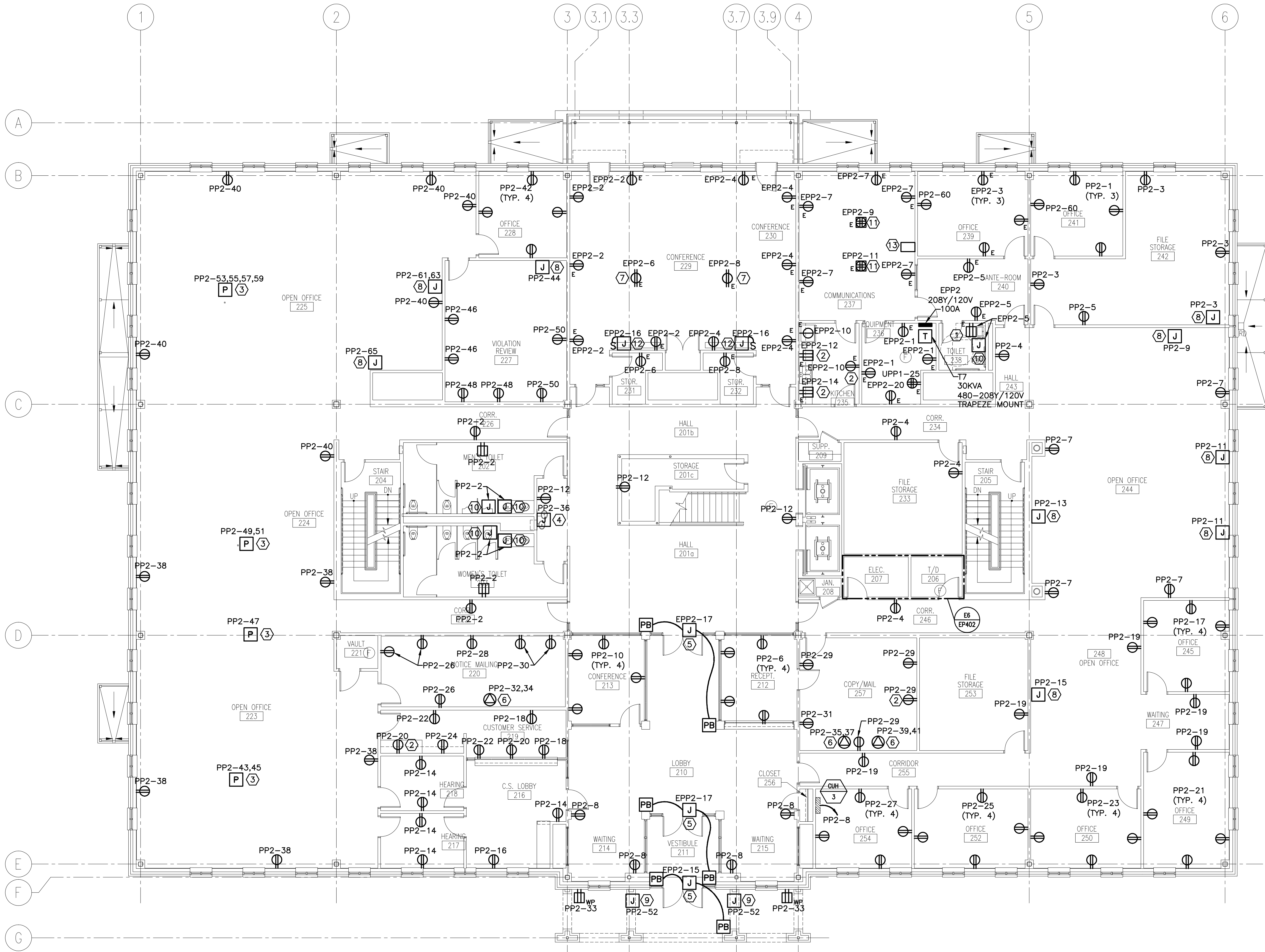
SHEET No.
EP102
© COPYRIGHT 2007 SMART

NOTE:

1. SEE SHEET E001 FOR LEGEND AND ABBREVIATIONS.

KEYED NOTES:

- ① MOUNT 45" AFF TO CENTER OF DEVICE.
- ② MOUNT 7" ABOVE COUNTER TO CENTER OF DEVICE.
- ③ FURNISH AND INSTALL DUAL SERVICE ALUMINUM POWER POLE FOR 120V CONNECTIONS TO PREWIRED OFFICE FURNITURE. (WIREMOLD #NP600 SERIES OR EQUAL). COMBINE AND BALANCE PREWIRED CIRCUITING AS REQUIRED TO CONNECT TO BRANCH CIRCUITS AS INDICATED. MAX. 8 DUPLEX DEVICES OR 3 WORKSTATIONS PER CIRCUIT. COORDINATE EXACT REQUIREMENTS, WIRING AND LOCATIONS W/ OWNER, ARCHITECT, AND OFFICE FURNITURE INSTALLER. SEE SHEET EY102 FOR ADDITIONAL INFORMATION.
- ④ PROVIDE 120V HARDWIRED CONNECTION TO ELECTRIC WATER COOLER. COORDINATE W/ MECHANICAL CONTRACTOR.
- ⑤ PROVIDE 120V CONNECTION TO MOTORIZED DOOR OPERATOR UNIT. PROVIDE 1/2" CONDUIT FROM INTERIOR SWITCHES AND 1/2" UNDERGROUND CONDUIT FROM EXTERIOR SWITCHES. COORDINATE W/ EQUIPMENT INSTALLER.
- ⑥ FURNISH AND INSTALL NEMA 6-20R, 208V, 1Ø RECEPTACLE FOR CONNECTION TO OWNER PROVIDED LARGE COPIER. COORDINATE W/ OWNER, ARCHITECT, AND ACTUAL EQUIPMENT PROVIDED.
- ⑦ PROVIDE 120V CEILING MOUNT RECEPTACLE CONNECTION FOR PROJECTOR EQUIPMENT.
- ⑧ PROVIDE 4" SQUARE JUNCTION BOX FOR 120V CONNECTIONS TO PREWIRED OFFICE FURNITURE. EACH BRANCH CIRCUIT SHALL HAVE A DEDICATED NEUTRAL CONDUCTOR. COMBINE AND BALANCE PREWIRED DEVICE CIRCUITS AS REQUIRED TO CONNECT TO BRANCH CIRCUITS AS INDICATED. MAX. 8 DUPLEX DEVICES OR 3 WORKSTATIONS PER CIRCUIT. COORDINATE EXACT REQUIREMENTS, WIRING AND LOCATIONS W/ OWNER, ARCHITECT, AND OFFICE FURNITURE INSTALLER. SEE SHEET EY102 FOR ADDITIONAL INFORMATION.
- ⑨ PROVIDE 120V CONNECTION TO ELECTRIC HEAT TRACE FURNISHED BY THE PLUMBING CONTRACTOR. COORDINATE W/ PLUMBING CONTRACTOR.
- ⑩ PROVIDE 120V HARDWIRED OR RECEPTACLE CONNECTION TO AUTOMATIC FLUSH VALVE AND/OR FAUCET POWER SUPPLIES FURNISHED BY THE PLUMBING CONTRACTOR. COORDINATE LOCATIONS AND REQUIREMENTS W/ ARCHITECT AND PLUMBING CONTRACTOR.
- ⑪ FURNISH AND INSTALL CAST IN PLACE MULTI-SERVICE RECESSED FLOORBOX (WALKER #RFB4 SERIES OR EQUAL) W/ (2) DUPLEX RECEPTACLES AND CARPET COVER ASSEMBLY. PROVIDE DEDICATED BRANCH CIRCUIT IN 1" CONDUIT AND 1" SPARE FROM EPP2. COORDINATE EXACT LOCATION W/ OWNER AND ARCHITECT. SEE SHEET EY102 FOR ADDITIONAL INFORMATION.
- ⑫ PROVIDE 120V CONNECTION TO MOTORIZED PROJECTION SCREEN IN 4" SQUARE JUNCTION BOX ABOVE ACCESSIBLE CEILING. INSTALL & LABEL CONTROL SWITCH FURNISHED W/ EQUIPMENT. COORDINATE EXACT LOCATIONS W/ OWNER AND ARCHITECT.
- ⑬ FURNISH AND INSTALL GENERATOR ANNUNCIATOR PANEL ADJACENT FIRE ALARM ANNUNCIATOR. PROVIDE ALL NECESSARY CABLING TO GENERATOR CONTROLLER VIA UNDERGROUND PVC CONDUITS AND IN EMT.



A1 FLOOR PLAN

1/8" = 1'-0"