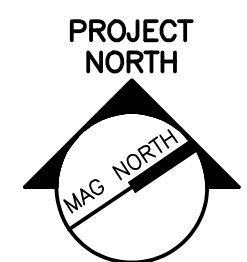


**NOTE:**

1. SEE SHEET E001 FOR LEGEND AND ABBREVIATIONS.

**KEYED NOTE:**

- ① LIGHTING CONTROL SYSTEM GALLERY LIGHTING ZONE OVERRIDE SWITCH.
- ② FURNISH AND INSTALL 10' RECESSED TYPE 120V LIGHTING TRACK IN ACT CEILING. PROVIDE TRACK HEADS AS INDICATED FOR ILLUMINATION WALL ART. COORDINATE W/ ARCHITECT AND CEILING INSTALLER.
- ③ CANOPY AND FACADE/SIGNAGE LIGHTING SHOWN FOR COORDINATION ONLY. SEE SHEET ES401 FOR FIXTURE TYPE AND CIRCUITING.
- ④ EMERGENCY POWER CONTROL MODULE FOR SINGLE LEVEL SWITCHED LIFE SAFETY LIGHTING VIA LIGHTING CONTROL PANEL AS INDICATED. SEE SHEET EL651 DETAIL J8 FOR ADDITIONAL INFORMATION.
- ⑤ EMERGENCY POWER CONTROL MODULE FOR DUAL LEVEL SWITCHED LIFE SAFETY LIGHTING THROUGH A LIGHTING CONTROL PANEL AS INDICATED. SEE SHEET EL651 DETAIL E8 FOR ADDITIONAL INFORMATION.
- ⑥ EMERGENCY POWER CONTROL MODULE FOR INTERIOR SWITCHED STANDBY LIGHTING AS INDICATED. SEE SHEET EL651 DETAIL A8 FOR ADDITIONAL INFORMATION.
- ⑦ DUAL LEVEL SWITCHED EMERGENCY FIXTURE VIA LIGHTING CONTROL PANEL. CONNECT OUTBOARD LAMPS TO SWITCHED LIFE SAFETY CIRCUIT AND CENTER LAMP TO SWITCHED NORMAL CIRCUIT AS INDICATED. SEE SHEET EL651 DETAIL E8 FOR ADDITIONAL INFORMATION.
- ⑧ PROVIDE FIXTURE W/ BODINE #B50ST FLUORESCENT EMERGENCY BATTERY BALLAST FOR INSTANT FULL ON OPERATION OF DIMMED FIXTURE DURING POWER INTERRUPTION.
- ⑨ EMERGENCY POWER CONTROL MODULE FOR DUAL LEVEL SWITCHED LIFE SAFETY LIGHTING VIA LOCAL OCCUPANCY SENSOR AS INDICATED. SEE SHEET EL651 DETAIL E8 FOR ADDITIONAL INFORMATION.
- ⑩ DUAL LEVEL SWITCHED EMERGENCY FIXTURE VIA OCCUPANCY SENSOR. CONNECT OUTBOARD LAMPS TO SWITCHED LIFE SAFETY CIRCUIT AND CENTER LAMP TO SWITCHED NORMAL CIRCUIT AS INDICATED. SEE SHEET EL651 DETAIL E12 FOR ADDITIONAL INFORMATION.
- ⑪ EMERGENCY POWER CONTROL MODULE FOR SINGLE LEVEL SWITCHED LIFE SAFETY LIGHTING VIA OCCUPANCY SENSOR AS INDICATED. SEE SHEET EL651 DETAIL J12 FOR ADDITIONAL INFORMATION.
- ⑫ EMERGENCY POWER CONTROL MODULE FOR SINGLE LEVEL SWITCHED LIFE SAFETY LIGHTING ONLY AREAS VIA OCCUPANCY SENSOR AS INDICATED. SEE SHEET EL651 DETAIL A5 FOR ADDITIONAL INFORMATION.
- ⑬ EMERGENCY POWER CONTROL MODULE FOR SINGLE LEVEL SWITCHED LIFE SAFETY LIGHTING ONLY AREAS VIA LIGHTING CONTROL PANEL AS INDICATED. SEE SHEET EL651 DETAIL A1 FOR ADDITIONAL INFORMATION.
- ⑭ UNSWITCHED LIFE SAFETY FIXTURE WIRED FOR 24 HOUR OPERATION.



PROJECT TITLE:  
**MAINE TURNPIKE AUTHORITY  
ADMINISTRATION BUILDING**  
PORTLAND, MAINE

CURRENT ISSUE STATUS:  
**ISSUED FOR BIDDING/CONSTRUCTION**  
7-9-07

REV	DESCRIPTION	DATE
0	BIDDING/CONSTRUCTION	7-9-07

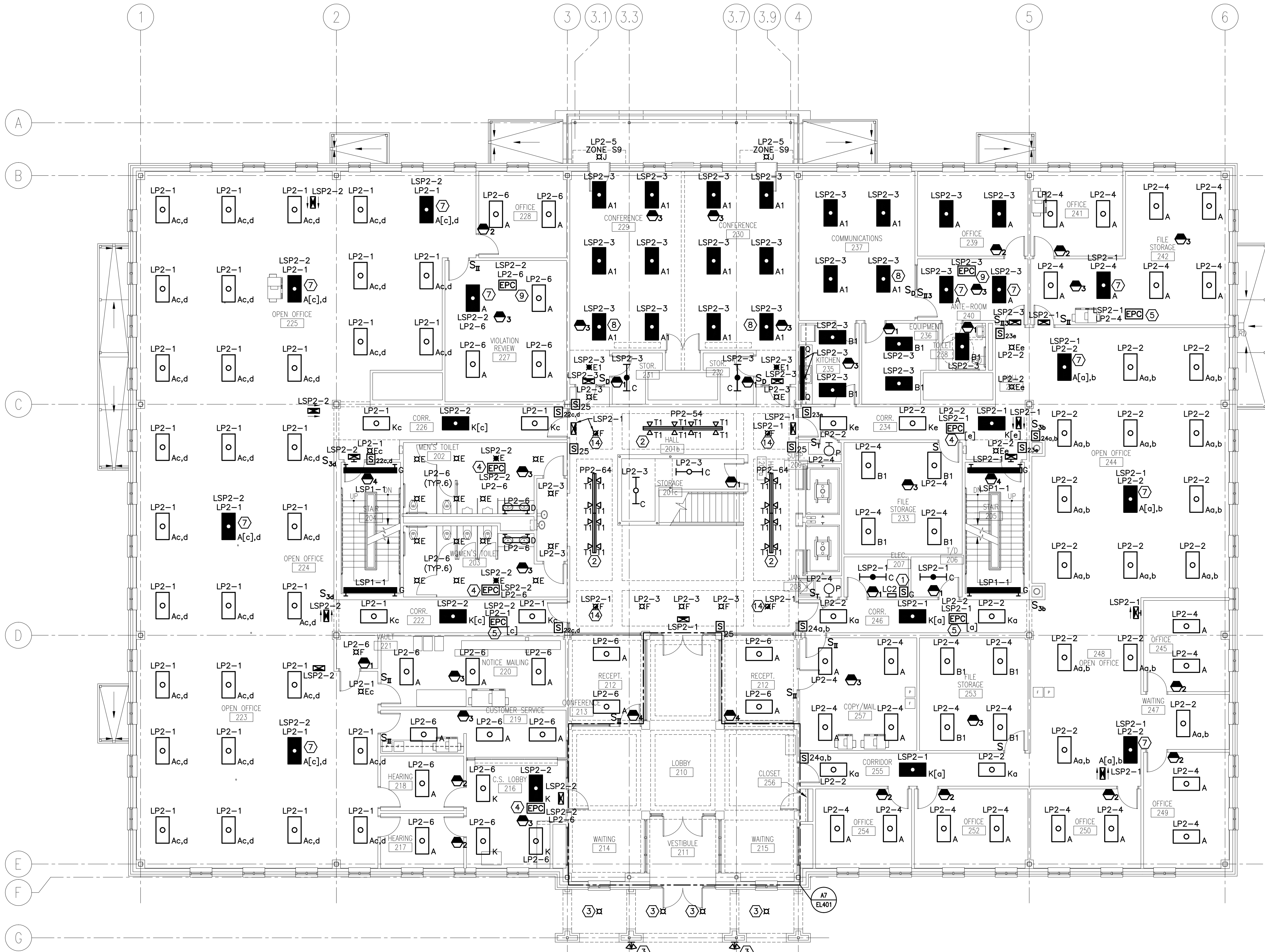
GRAPHIC SCALE:  
0" = 1"

SCALE: 1/8" = 1'-0"

PROJECT MANAGER: SLB  
JC/DRAWN BY: TCM/CDS  
A/E OF RECORD: JPP  
CAD FILE: EL102-06016  
PROJECT NO: 06016  
DATE: 7-9-07

SHEET TITLE:  
**SECOND FLOOR  
LIGHTING PLAN**

SHEET No.  
**EL102**



**A1 FLOOR PLAN**

1/8" = 1'-0"