

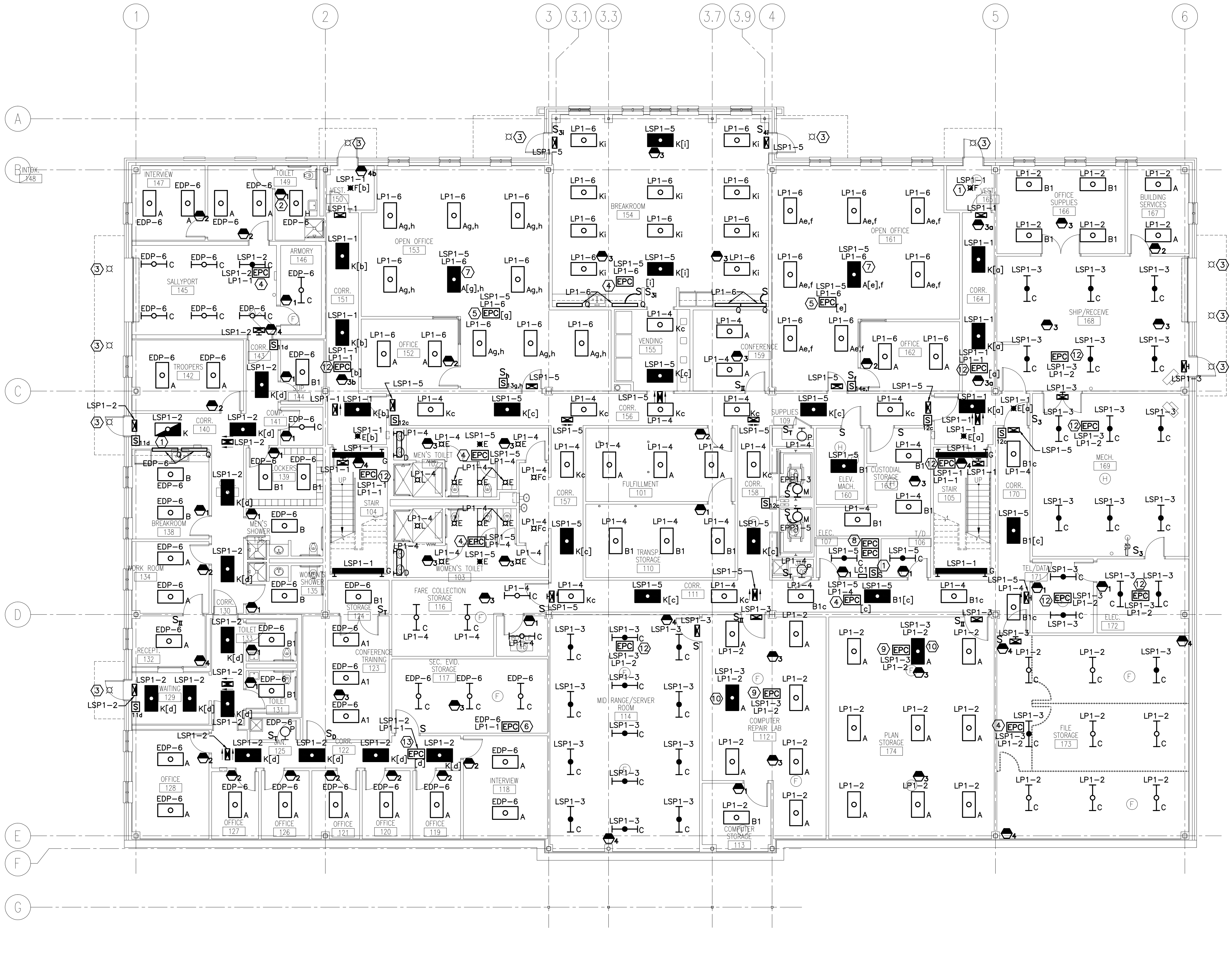
REV	DESCRIPTION	DATE
0	BIDDING/CONSTRUCTION	7-9-07

**NOTE:**

1. SEE SHEET E001 FOR LEGEND AND ABBREVIATIONS.

**KEYED NOTE:**

- ① CONNECT TO LIGHTING BRANCH CIRCUIT AHEAD OF SWITCHING FOR 24 HOUR OPERATION.
- ② FURNISH AND INSTALL STI #9620 VANDAL RESISTANT WIRE CAGE FOR WALL SWITCH DEVICE.
- ③ CANOPY LIGHTING SHOWN FOR COORDINATION ONLY. SEE SHEET ES401 FOR FIXTURE TYPE AND CIRCUITING.
- ④ EMERGENCY POWER CONTROL MODULE FOR SINGLE LEVEL SWITCHED LIFE SAFETY LIGHTING VIA LIGHTING CONTROL PANEL AS INDICATED. SEE SHEET EL651 DETAIL J8 FOR ADDITIONAL INFORMATION.
- ⑤ EMERGENCY POWER CONTROL MODULE FOR DUAL LEVEL SWITCHED LIFE SAFETY LIGHTING THROUGH A LIGHTING CONTROL PANEL AS INDICATED. SEE SHEET EL651 DETAIL E8 FOR ADDITIONAL INFORMATION.
- ⑥ EMERGENCY POWER CONTROL MODULE FOR INTERIOR SWITCHED STANDBY LIGHTING AS INDICATED. SEE SHEET EL651 DETAIL A8 FOR ADDITIONAL INFORMATION.
- ⑦ DUAL LEVEL SWITCHED EMERGENCY FIXTURE VIA LIGHTING CONTROL PANEL. CONNECT OUTBOARD LAMPS TO SWITCHED LIFE SAFETY CIRCUIT AND CENTER LAMP TO SWITCHED NORMAL CIRCUIT AS INDICATED. SEE SHEET EL651 DETAIL E8 FOR ADDITIONAL INFORMATION.
- ⑧ EMERGENCY POWER CONTROL MODULES FOR SWITCHED STANDBY LIGHTING BRANCH CIRCUITS. SEE SHEET EL651 DETAIL A12, ES101, AND ES401 FOR ADDITIONAL INFORMATION.
- ⑨ EMERGENCY POWER CONTROL MODULE FOR DUAL LEVEL SWITCHED LIFE SAFETY LIGHTING VIA LOCAL OCCUPANCY SENSOR AS INDICATED. SEE SHEET EL651 DETAIL E8 FOR ADDITIONAL INFORMATION.
- ⑩ DUAL LEVEL SWITCHED EMERGENCY FIXTURE VIA OCCUPANCY SENSOR. CONNECT OUTBOARD LAMPS TO SWITCHED LIFE SAFETY CIRCUIT AND CENTER LAMP TO SWITCHED NORMAL CIRCUIT AS INDICATED. SEE SHEET EL651 DETAIL E12 FOR ADDITIONAL INFORMATION.
- ⑪ EMERGENCY POWER CONTROL MODULE FOR SINGLE LEVEL SWITCHED LIFE SAFETY LIGHTING VIA OCCUPANCY SENSOR AS INDICATED. SEE SHEET EL651 DETAIL J12 FOR ADDITIONAL INFORMATION.
- ⑫ EMERGENCY POWER CONTROL MODULE FOR SINGLE SWITCHED LIFE SAFETY LIGHTING ONLY AREAS VIA OCCUPANCY SENSOR AS INDICATED. SEE SHEET EL651 DETAIL A5 FOR ADDITIONAL INFORMATION.
- ⑬ EMERGENCY POWER CONTROL MODULE FOR SINGLE LEVEL SWITCHED LIFE SAFETY LIGHTING ONLY AREAS VIA LIGHTING CONTROL PANEL AS INDICATED. SEE SHEET EL651 DETAIL A1 FOR ADDITIONAL INFORMATION.



A1 FIRST FLOOR PLAN

1/8" = 1'-0"