

TABLE 2 OUTLET STRUCTURE ELEVATIONS

	A	B	C	S@ALE	E ¹ = 25'F
POND #1	87.00	85.90	80.30	80.60	83.00
POND #2	90.00	88.50	83.30	83.60	86.00
					87.50

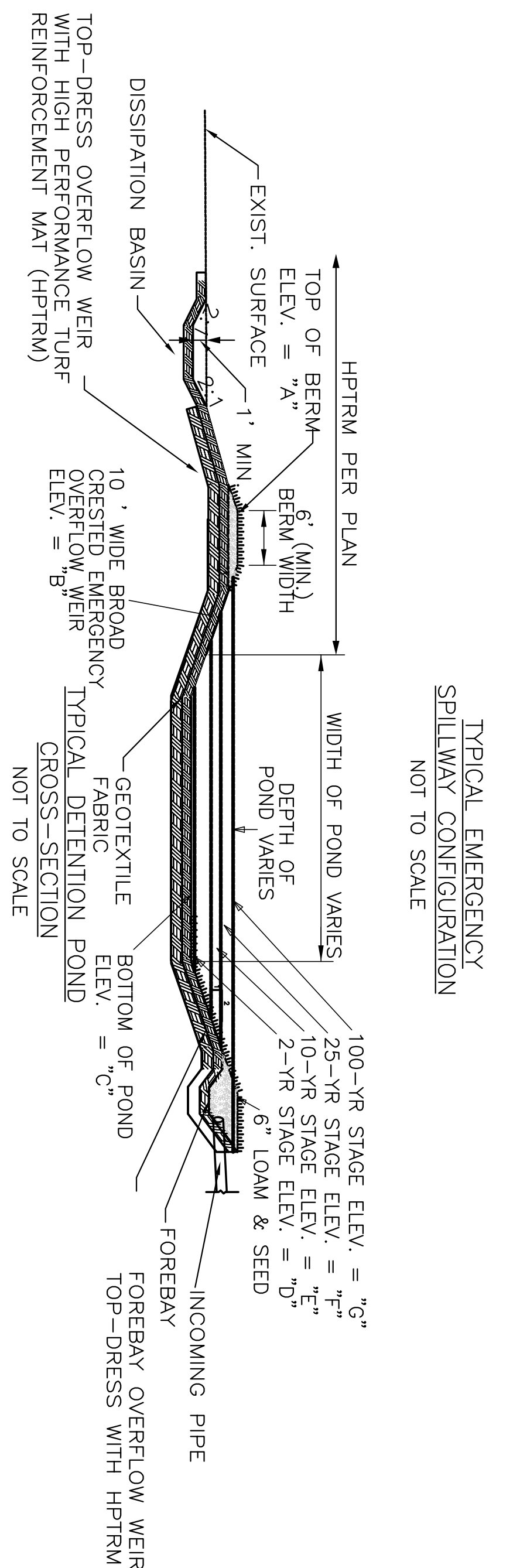
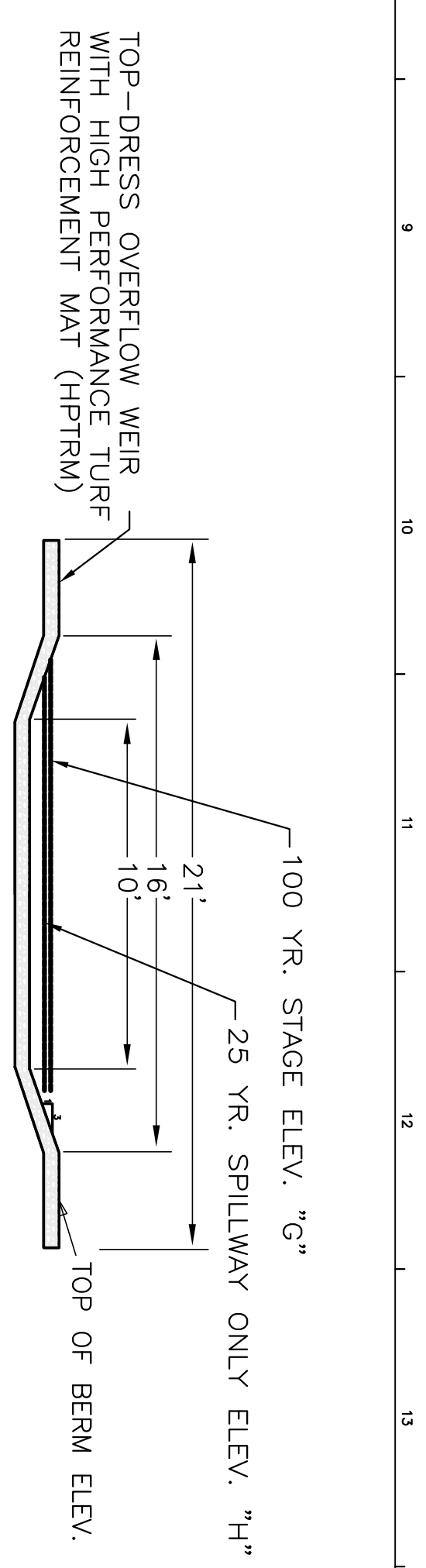
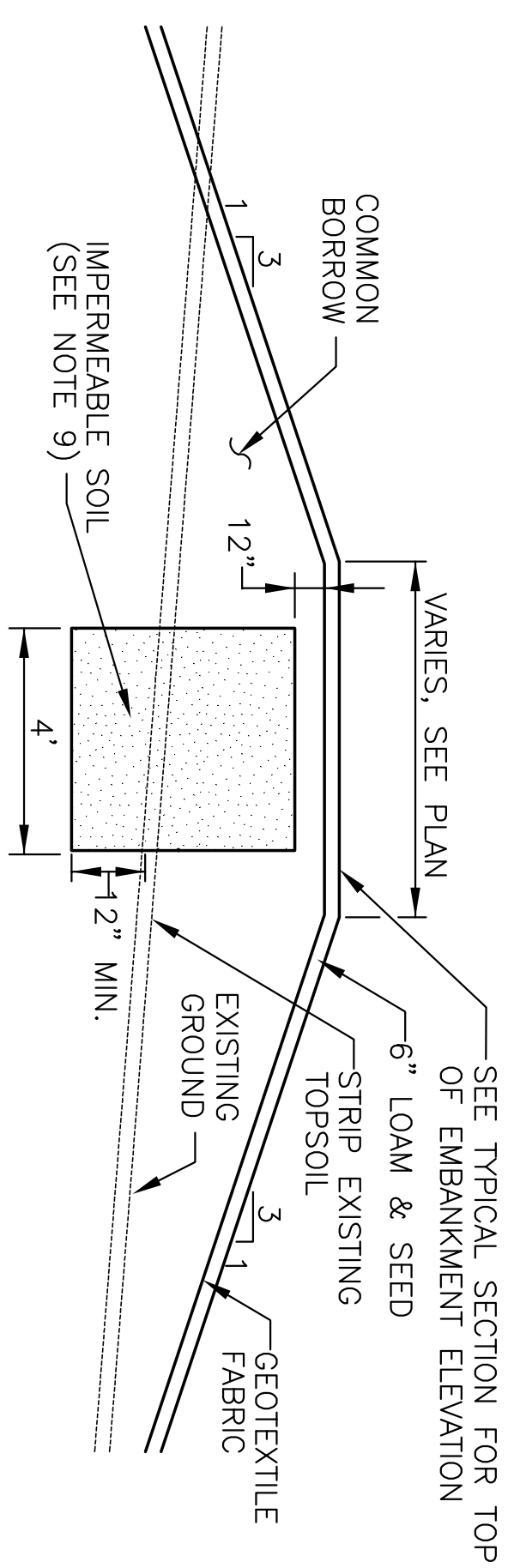
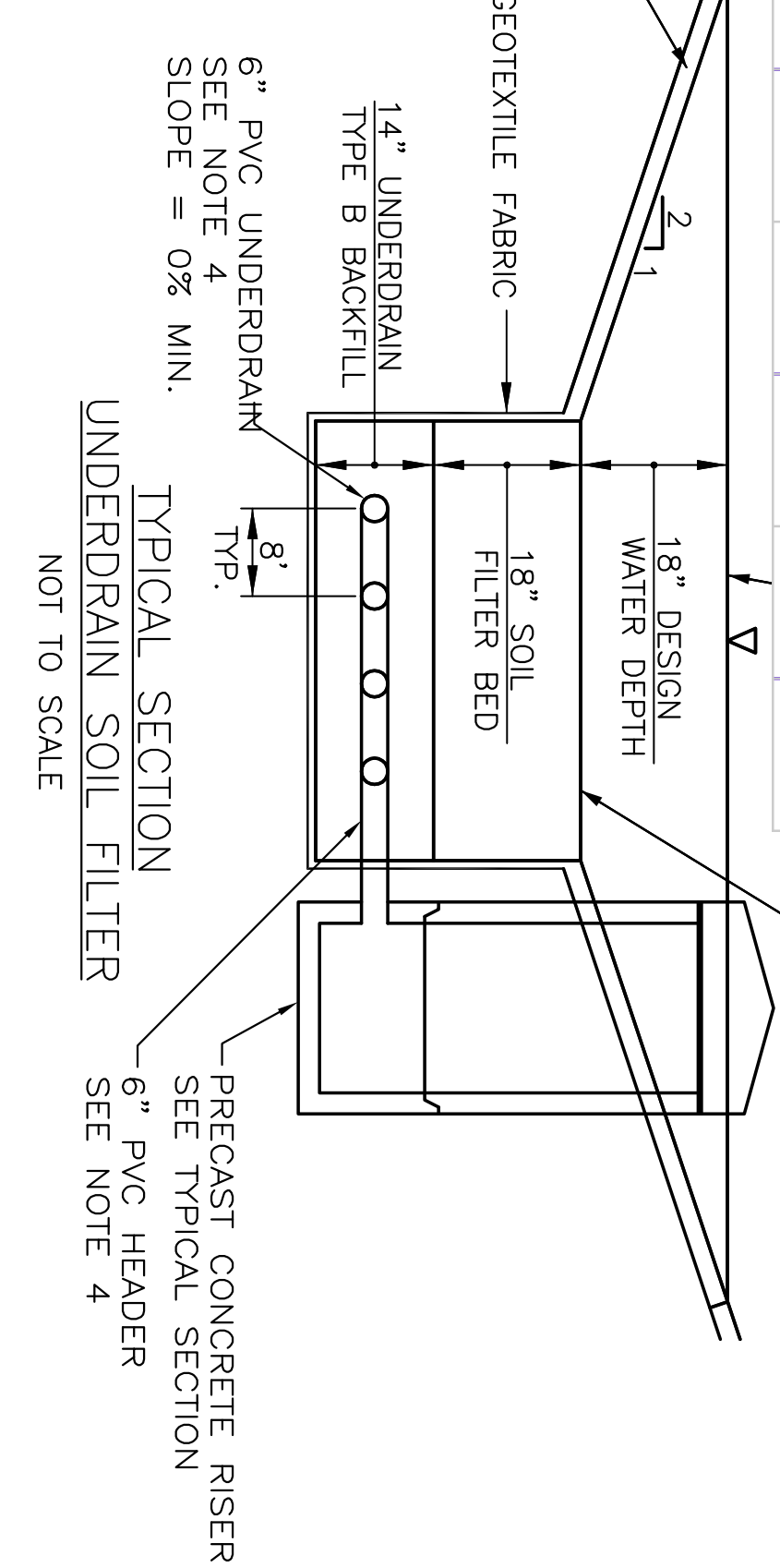


TABLE 1 SPILLWAY CROSS SECTION

POND #1	A	B	C	D	E	F	G	H
87.00	86.50	83.00	85.06	86.08	86.22	86.46	86.80	
90.00	89.00	86.00	87.69	88.57	88.68	88.79	89.21	

NOTES:

- SOIL FILTER BED MATERIAL SHALL BE A LIGHTLY COMPACTED THOROUGHLY BLENDED MIXTURE OF THE FOLLOWING: SILTY SAND (75-80% BY VOLUME); MEDOT SPEC. 703.01 (FINE AGGREGATE FOR CONCRETE); SOIL SHALL HAVE NO GREATER THAN 2% CLAY CONTENT; MULCH (20-25% BY VOLUME); MODERATELY FINE SHREDDED BARK MULCH OR WOOD FIBER MULCH. TOTAL MIXTURE SHALL HAVE A RANGE OF 8-10% PASSING #200 SIEVE.
- UNDERDRAIN BACKFILL (BEDDING) SHALL BE WELL GRADED, CLEAN, COARSE GRAVEL MEETING MEDOT SPECIFICATION 703.22, TYPE B UNDERDRAIN BACKFILL. NO MORE THAN 2% BY WEIGHT SHALL PASS THE #200 SIEVE.
- GEOTEXTILE FABRIC SHALL BE MEDOT SPECIFICATION 722.02, CLASS A DESIGNATION.
- UNDERDRAIN PIPE SHALL BE PVC CONFORMING TO ASTM D3034, SDR 35. (UNDERDRAIN LATERALS SHALL BE 6 INCH SLOTTED PVC, 6 INCH PVC HEADER/OUTLET PIPE SHALL NOT BE SLOTTED.)
- STONE DITCH PROTECTION FOR PIPE OUTLET/DITCH PROTECTION SHALL BE MEDOT SPECIFICATION 703.29, WITH 90-100% WEIGHT OF ROCK PASSING AN 8 INCH SIEVE AND 0-15% PASSING A 4 INCH SIEVE.
- SURFACE OF SOIL FILTER SHALL BE PLANTED WITH WETLAND SEED "NEW ENGLAND EROSION CONTROL/RESTORATION MIX" AS SUPPLIED BY NEW ENGLAND WETLAND PLANTS, INC. SEED MIX SHALL BE APPLIED AT DOUBLE THE MANUFACTURERS APPLICATION RATE. SURFACE SHALL BE STABILIZED WITH AN APPROVED EROSION CONTROL MATTING.
- STORMWATER FILTER SHALL BE CONSTRUCTED TO THE LIMITS AND DETAILS SHOWN ON THE PLANS AND THE ABOVE SPECIFICATIONS UNLESS OTHERWISE APPROVED BY THE ENGINEER. IF LEDGE IS ENCOUNTERED IN THE EXCAVATION FOR EITHER POND, THE CONTRACTOR SHALL REMOVE THE LEDGE TO ALLOW FOR A 1' SEPARATION BETWEEN THE EXPOSED BEDROCK AND THE BOTTOM OF THE UNDERDRAIN SOIL FILTER. BACKFILL UP TO THE BOTTOM OF THE UNDERDRAIN SOIL FILTER WITH SUITABLE, COMPACTED CLAY MATERIAL (SEE NOTE 9).
- HIGH PERFORMANCE TURF REINFORCEMENT MATS (HPTRM) SHALL MEET THE SPECIFICATIONS OF LANDLOK PYRAMAT HPTRM OR APPROVED EQUAL.
- IMPERMEABLE SOIL FOR EMBANKMENT CORE AND BEDROCK COVER SHALL MEET MEDOT SPECIFICATION 203.245, CLAY BORROW. ON-SITE CLAY MATERIAL MAY BE USED IF IT MEETS THE SPECIFICATION.
- STORMWATER FILTER SHALL BE CONSTRUCTED TO THE LIMITS AND DETAILS SHOWN ON THE PLANS AND THE ABOVE SPECIFICATIONS UNLESS OTHERWISE APPROVED BY THE ENGINEER.

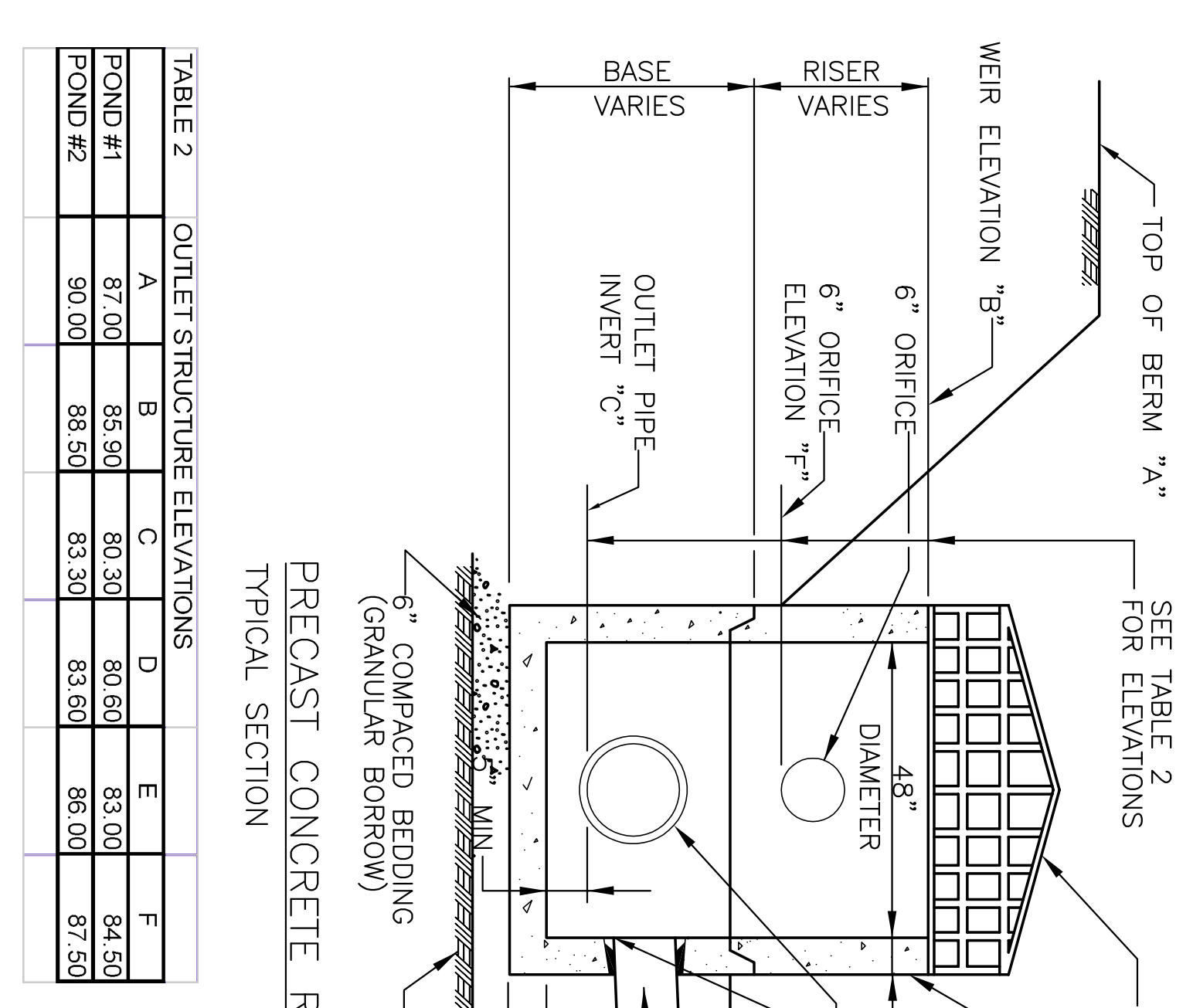


TABLE 2 OUTLET STRUCTURE ELEVATIONS

	A	B	C	D	E	F
POND #1	87.00	85.90	80.30	80.60	83.00	84.50
POND #2	90.00	88.50	83.30	83.60	86.00	87.50

- RISER NOTES:**
- MANHOLE SECTIONS AND STEEL REINFORCEMENT SHALL CONFORM TO ASTM C478, AND BE SUITABLE FOR HS-20 LOADINGS (TYP.).
 - 2 COATS BITUMINOUS DAMPROOFING