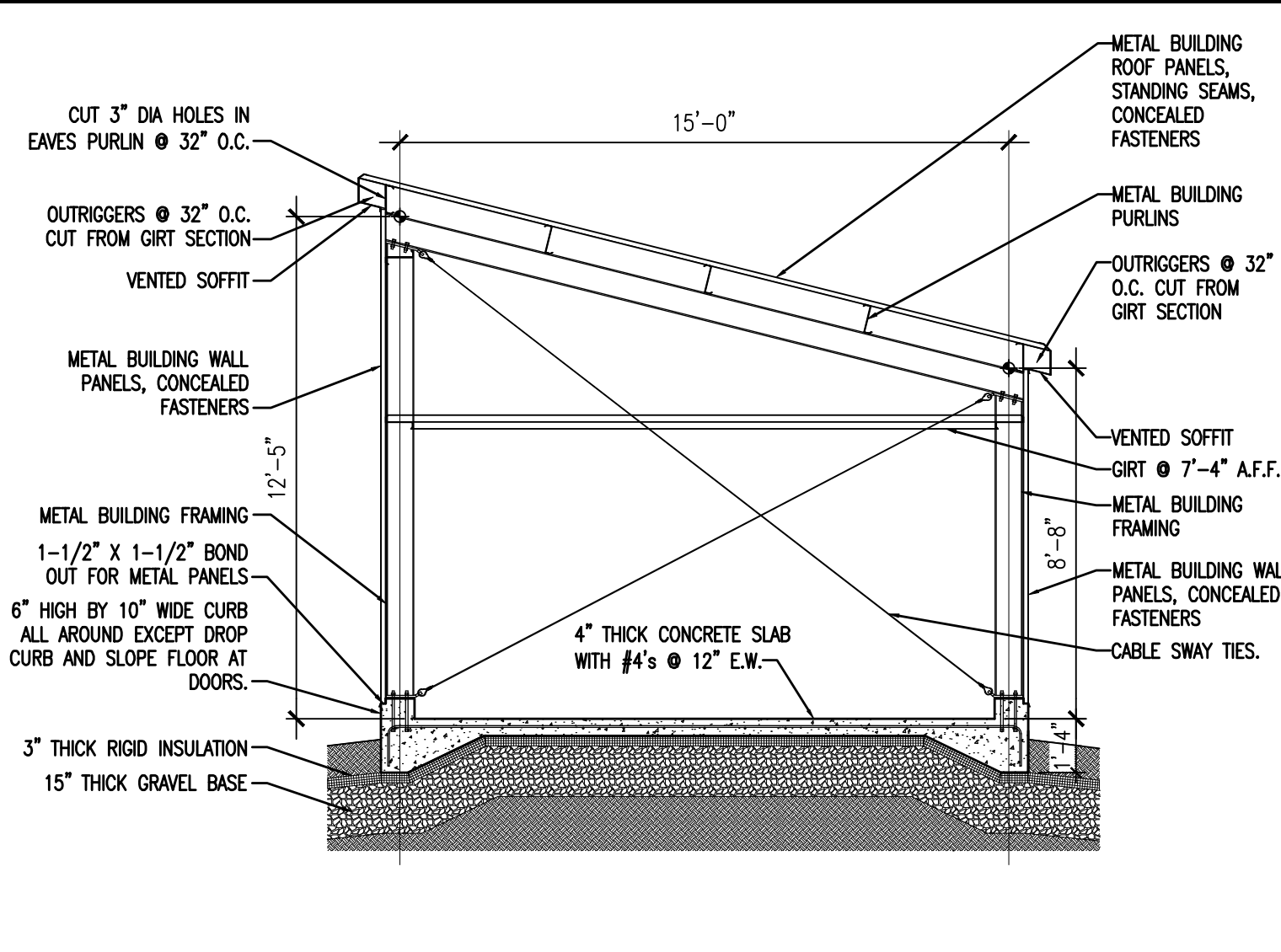
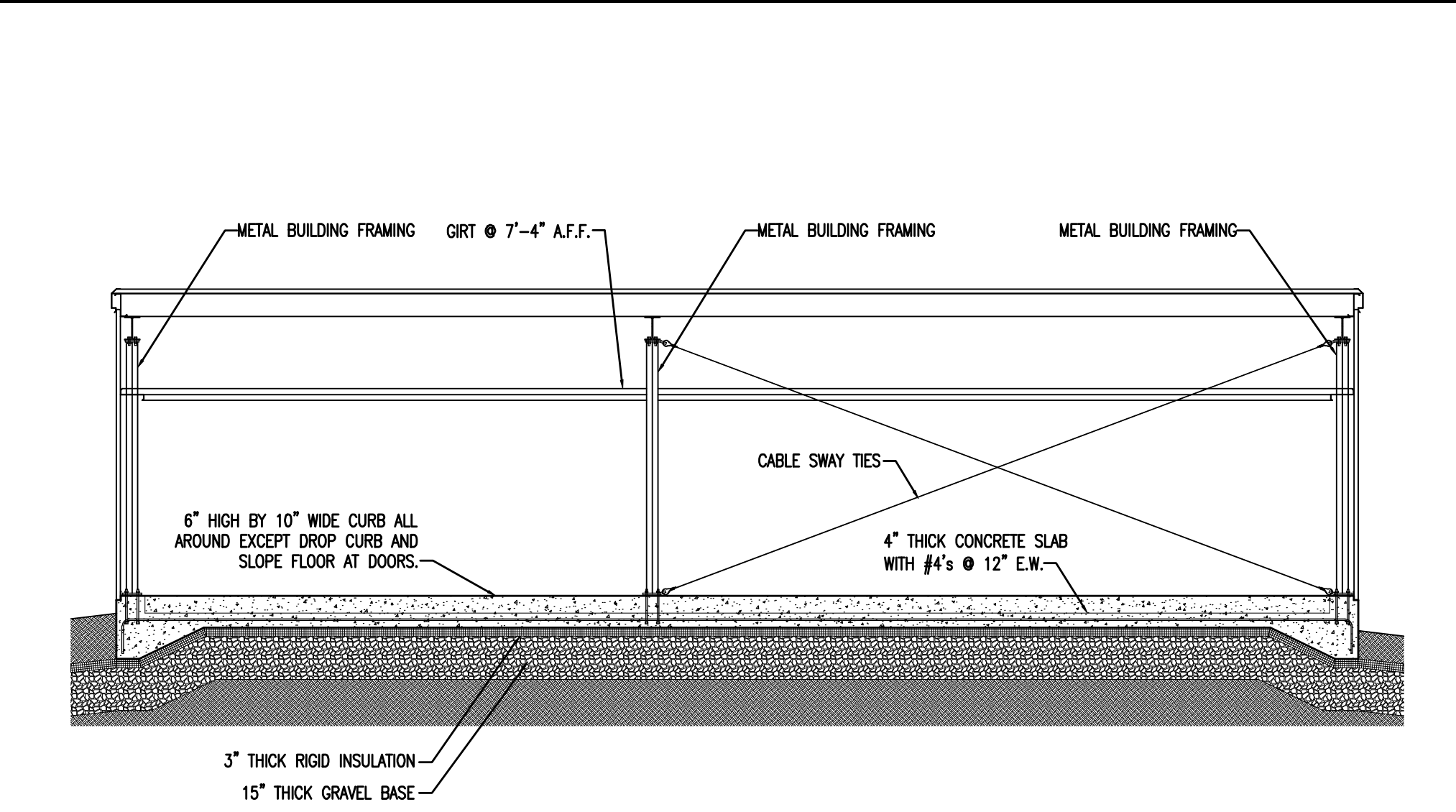
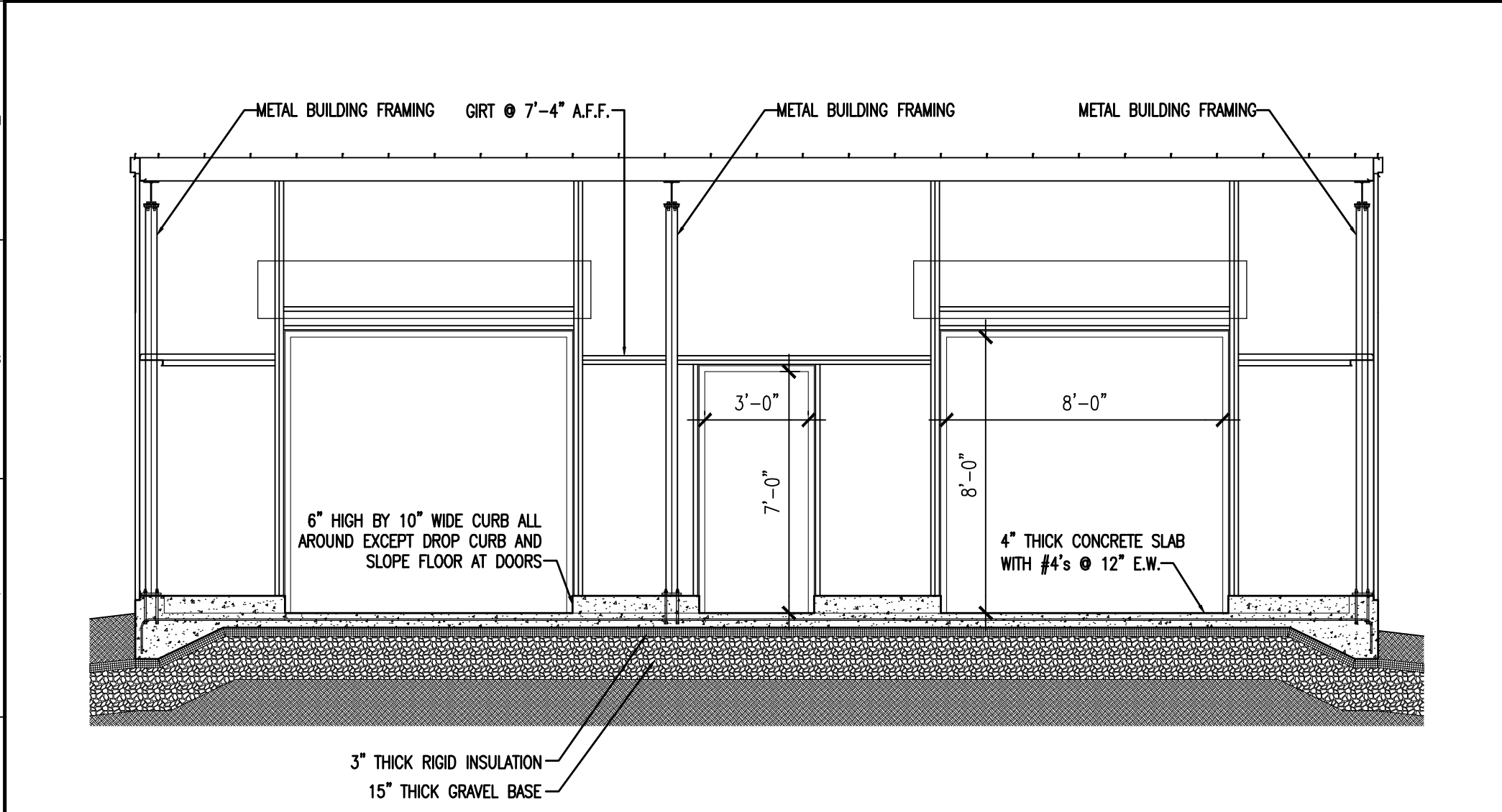


J1 FRONT ELEVATION
1/4" = 1'-0"

J6 REAR ELEVATION
1/4" = 1'-0"

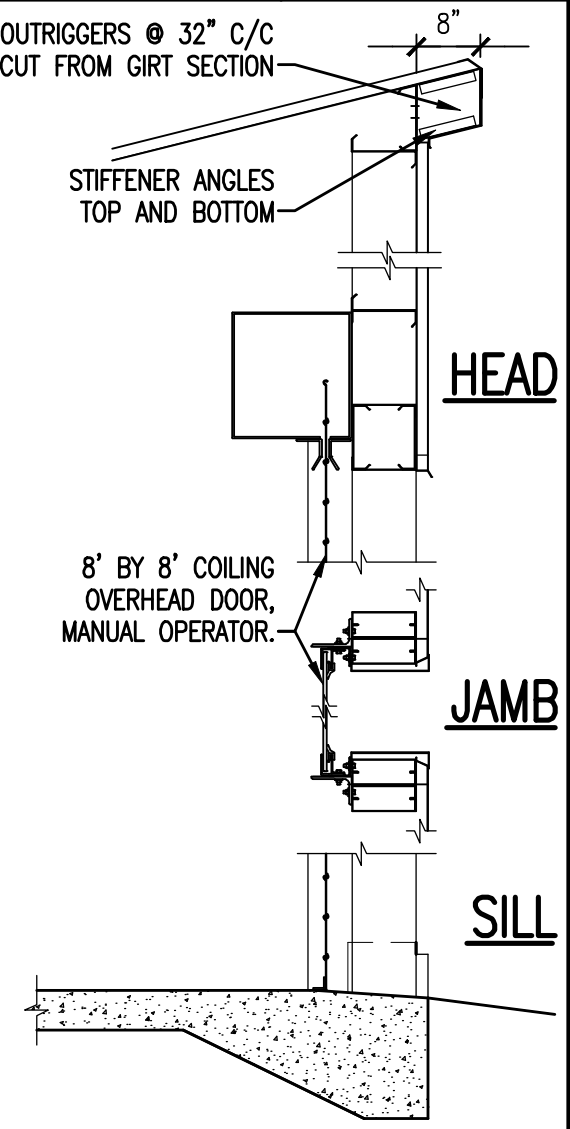
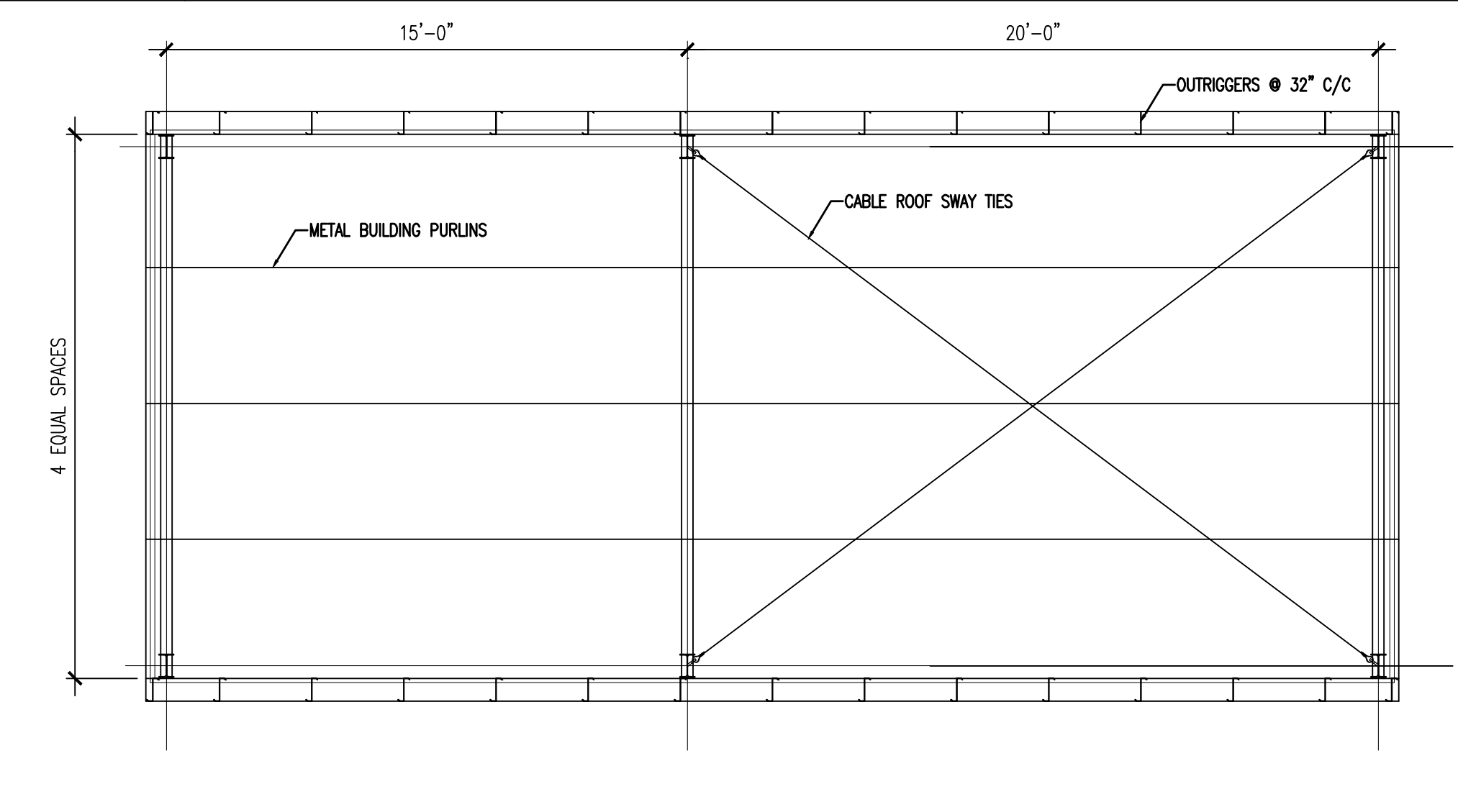
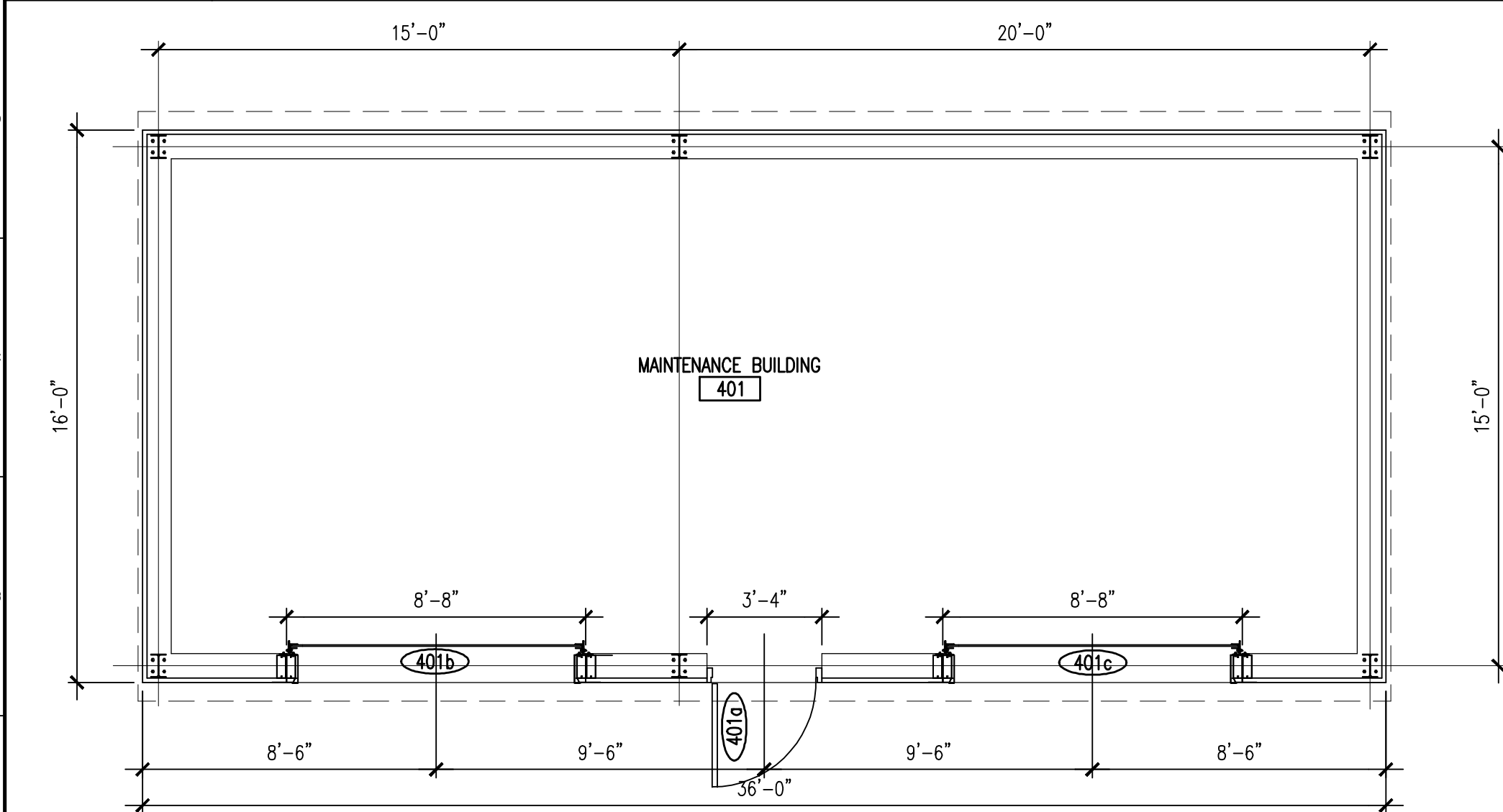
J12 SIDE ELEVATION
1/4" = 1'-0"



E1 FRONT WALL FRAMING ELEVATION
1/4" = 1'-0"

E6 REAR WALL FRAMING ELEVATION
1/4" = 1'-0"

E12 SIDE WALL FRAMING ELEVATION
1/4" = 1'-0"



GENERAL NOTES:

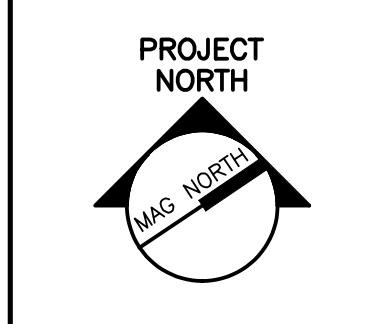
- SEE G1001 FOR PROJECT GENERAL NOTES.
- FOUNDATION: CLEAN GRAVEL COMPACTED TO 95% MIN DENSITY, EXTEND BEYOND FLOOR SLAB 36".
- UNDER SLAB INSULATION: 3" THICK EXTRUDED POLYSTYRENE INSULATION, EXTEND 36" BEYOND FLOOR SLAB.
- FLOOR SLAB: 3000 PSI 28 DAY COMPRESSIVE STRENGTH CONCRETE, 0.45 WATER CEMENT RATIO, STEEL TROWEL FINISH, CURE WITH CURING COMPOUND.
- STRUCTURAL STEEL: PRE-ENGINEERED METAL BUILDING PACKAGE INCLUDING STRUCTURAL MEMBERS, COLD ROLLED GIRTS AND PURLINS, CABLE TIES, ANCHOR BOLTS, THREE COAT FLUOROPOLYMER FINISH ON METAL WALL PANELS, GALVALUME FINISH ON ROOF PANELS, CONCEALED FASTENERS, WALL AND ROOF TRIM AND ALL ACCESSORIES NECESSARY FOR A COMPLETE BUILDING ENCLOSURE. COLOR OF PANELS TO BE SELECTED FROM MANUFACTURER'S STANDARD COLORS. REFER TO SPECIFICATIONS FOR ADDITIONAL INFORMATION.

A1 FLOOR PLAN
1/4" = 1'-0"

A6 ROOF FRAMING PLAN
1/4" = 1'-0"

A12 SECTION
1/2" = 1'-0"

SMT SRT
ARCHITECTURE ENGINEERING PLANNING
SWRT
144 Fore Street/P.O. Box 618
Portland, Maine 04104
tel. (207) 772-3846
fax. (207) 772-1070



PROJECT TITLE:
**MAINE TURNPIKE AUTHORITY
ADMINISTRATION BUILDING**
PORTLAND, MAINE

CURRENT ISSUE STATUS:
ISSUED FOR BIDDING/CONSTRUCTION
7-9-07

REV	DESCRIPTION	DATE
0	BIDDING/CONSTRUCTION	7-9-07

GRAPHIC SCALE:
0" = 1"

SCALE: AS NOTED
PROJECT MANAGER: SLB
JC/DRAWN BY: TCM/TCM
A/E OF RECORD: SLB
CAD FILE: AE402-06016
PROJECT NO: 06016
DATE: 7-9-07

SHEET TITLE:
**MAINTENANCE BUILDING
PLANS & ELEVATIONS**

SHEET No. **AE402**