

**GENERAL NOTES:**

- REFER TO G001 FOR PROJECT GENERAL NOTES.
- REFER TO AE220 FOR INTERIOR ELEVATIONS OF MAJOR TOILET ROOMS.
- PROVIDE BLOCKING AS REQUIRED TO ANCHOR TOILET ACCESSORIES.

**TOILET ACCESSORIES KEY NOTES:**

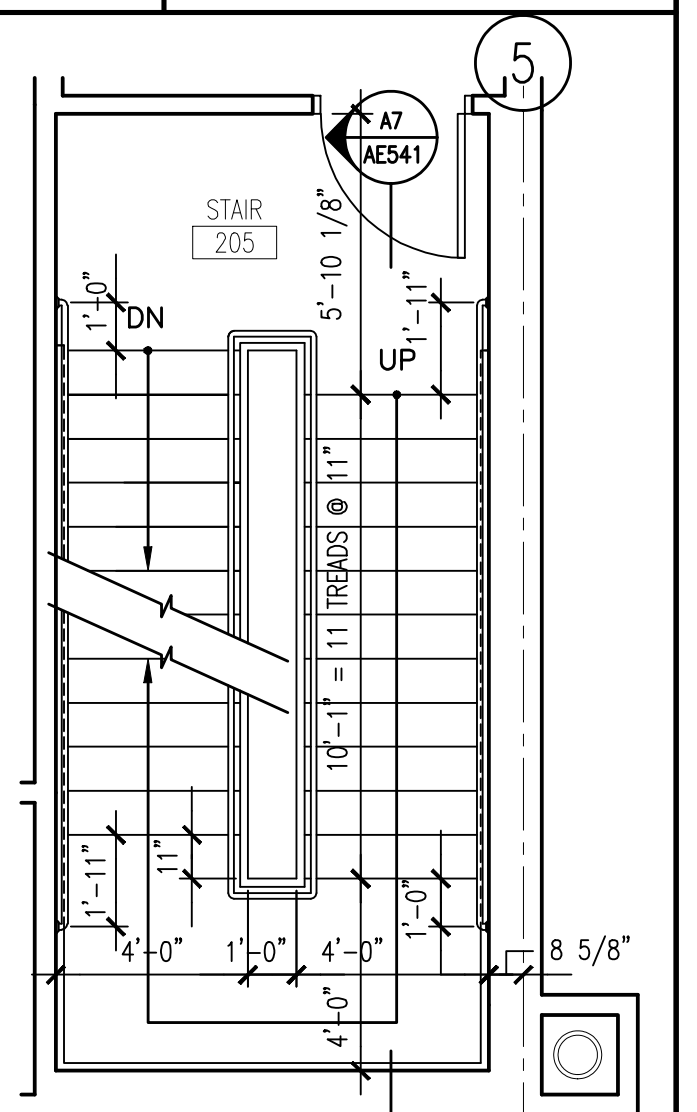
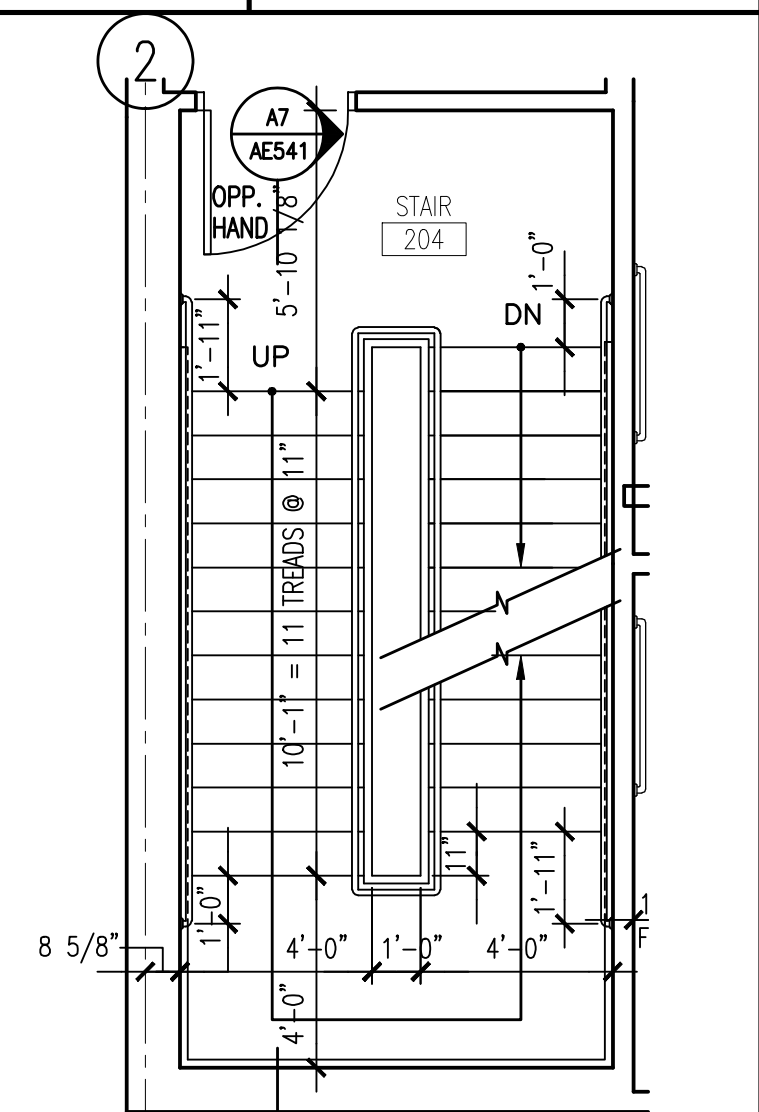
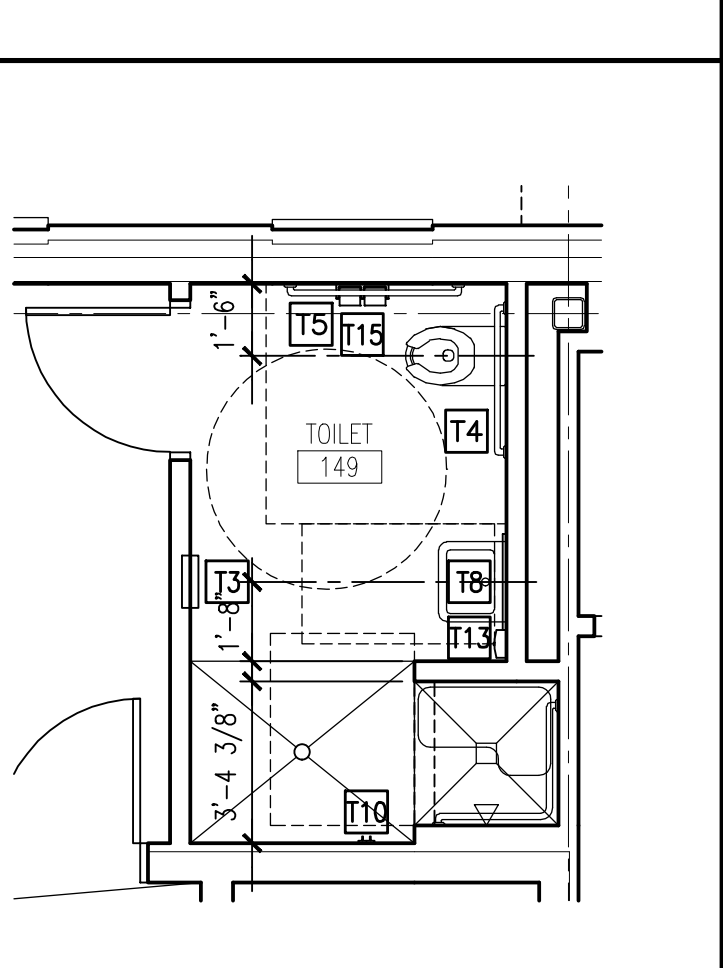
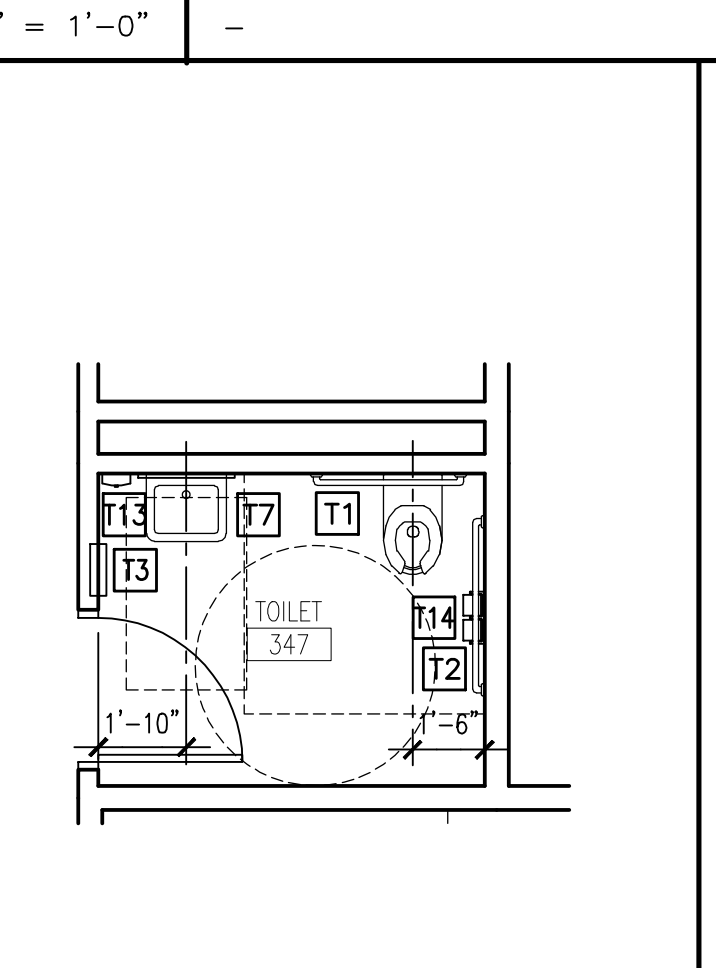
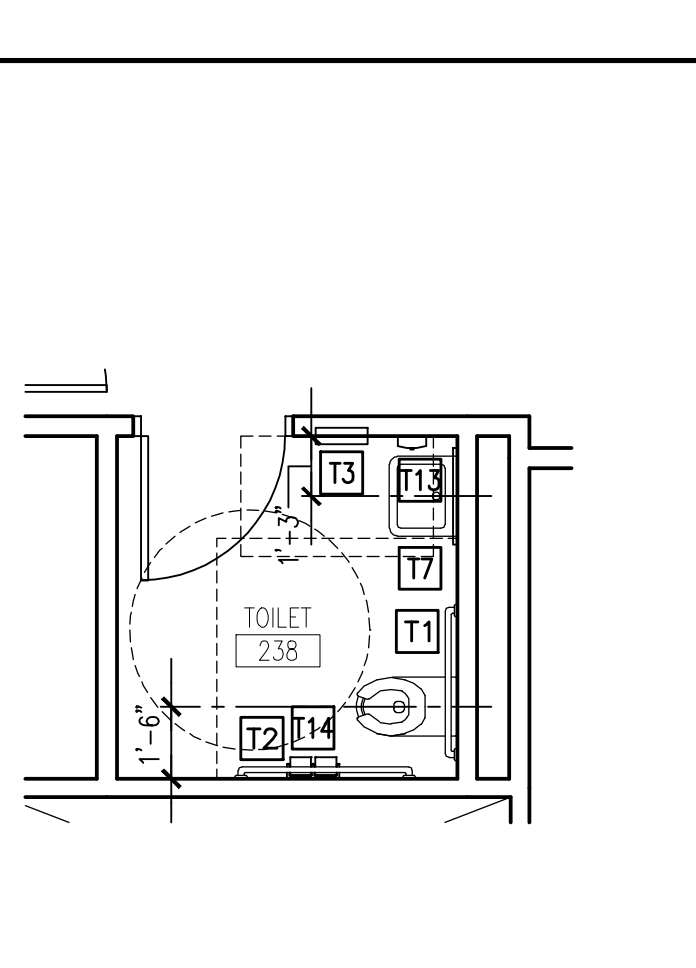
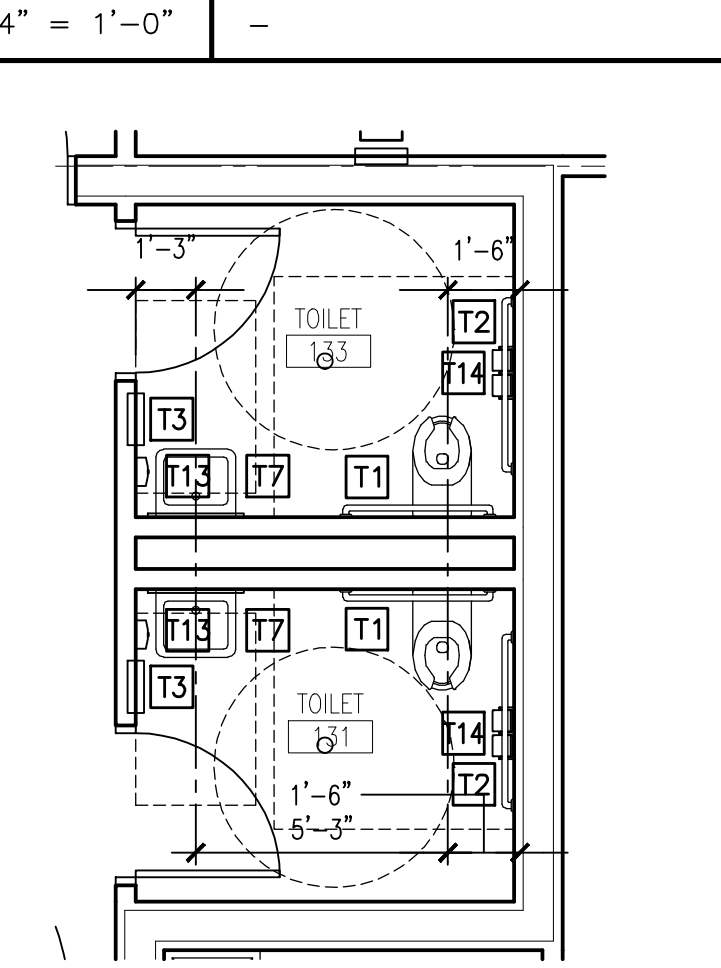
- T1 36" GRAB BARS
- T2 42" GRAB BARS
- T3 SMALLER PAPER TOWEL DISPENSER/ WASTE RECEPTACLE
- T4 36" GRAB BARS-DETENTION GRADE
- T5 42" GRAB BARS-DETENTION GRADE
- T6 PAPER TOWEL DISPENSER
- T7 MIRROR, 24"Wx48"H UNLESS OTHERWISE NOTED, RE: AE220
- T8 MIRROR-DETENTION GRADE, 24"Wx48"H
- T9 CLOTHES HOOKS, PAIR, MOUNTING HTS. 40" & 60" A.F.F.
- T10 CLOTHES HOOKS-DETENTION GRADE, PAIR, MOUNTING HTS. 40" & 60" A.F.F.
- T11 SANITARY NAPKIN DISPOSAL-PARTITION MOUNTED
- T12 SANITARY NAPKIN DISPOSAL-SURFACE MOUNTED
- T13 SOAP DISPENSER
- T14 TOILET TISSUE DISPENSER
- T15 TOILET TISSUE DISPENSER-DETENTION GRADE
- T16 COMBINATION TOWEL DISPENSER/ WASTE RECEPTACLE-RECESSED
- T17 TOILET PARTITIONS
- T18 URINAL PARTITIONS, 48"H
- T19 SHOWER CURTAIN, HOOKS & ROD
- T20 DIAPER CHANGING STATION
- T21 SANITARY NAPKIN VENDOR
- T22 LOCKER BENCH

**H1 ENLARGED PLAN - MEN'S TOILET 202/302 AND WOMEN'S TOILET 203/303**

**H5 ENLARGED PLAN - MEN'S TOILET 102 AND WOMEN'S TOILET 103**

**J9 ENLARGED PLAN STAIR 304**

**J11 ENLARGED PLAN STAIR 305**



**E1 ENLARGED PLAN TOILETS 133 & 131**

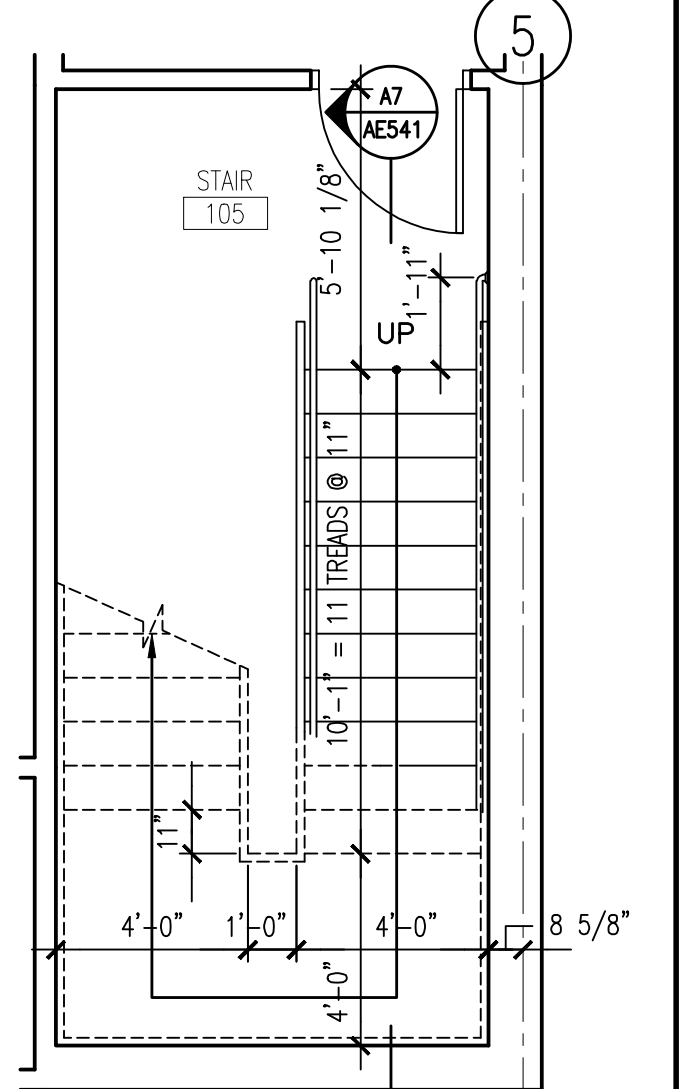
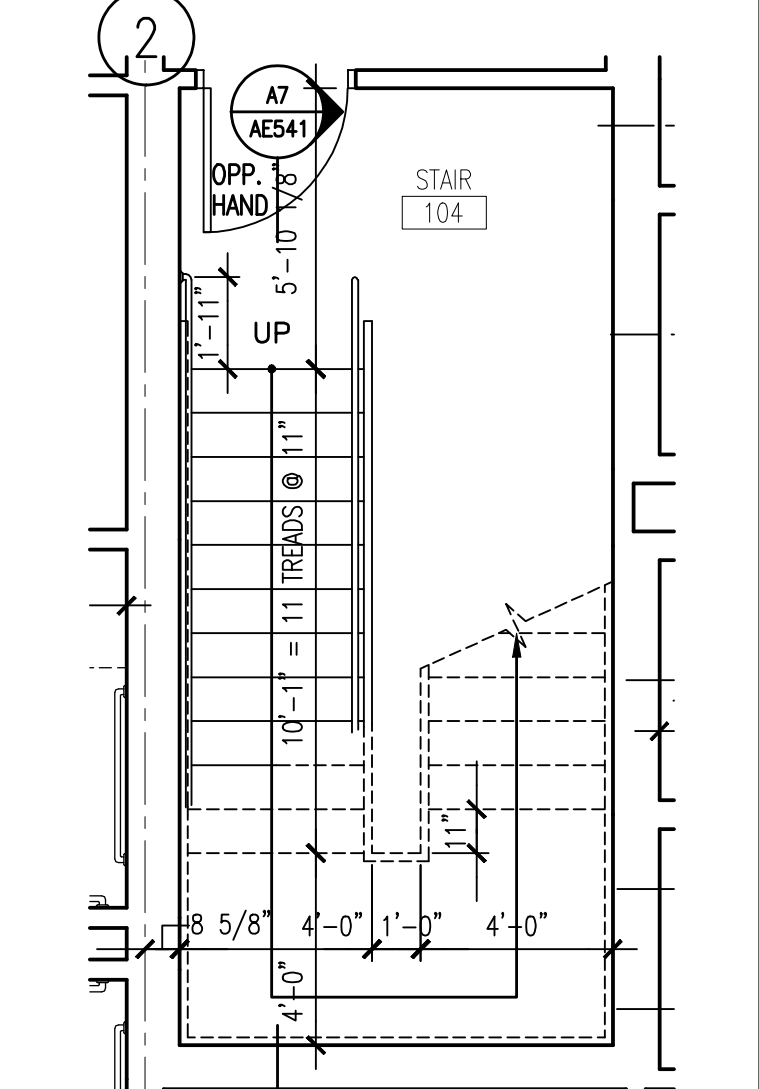
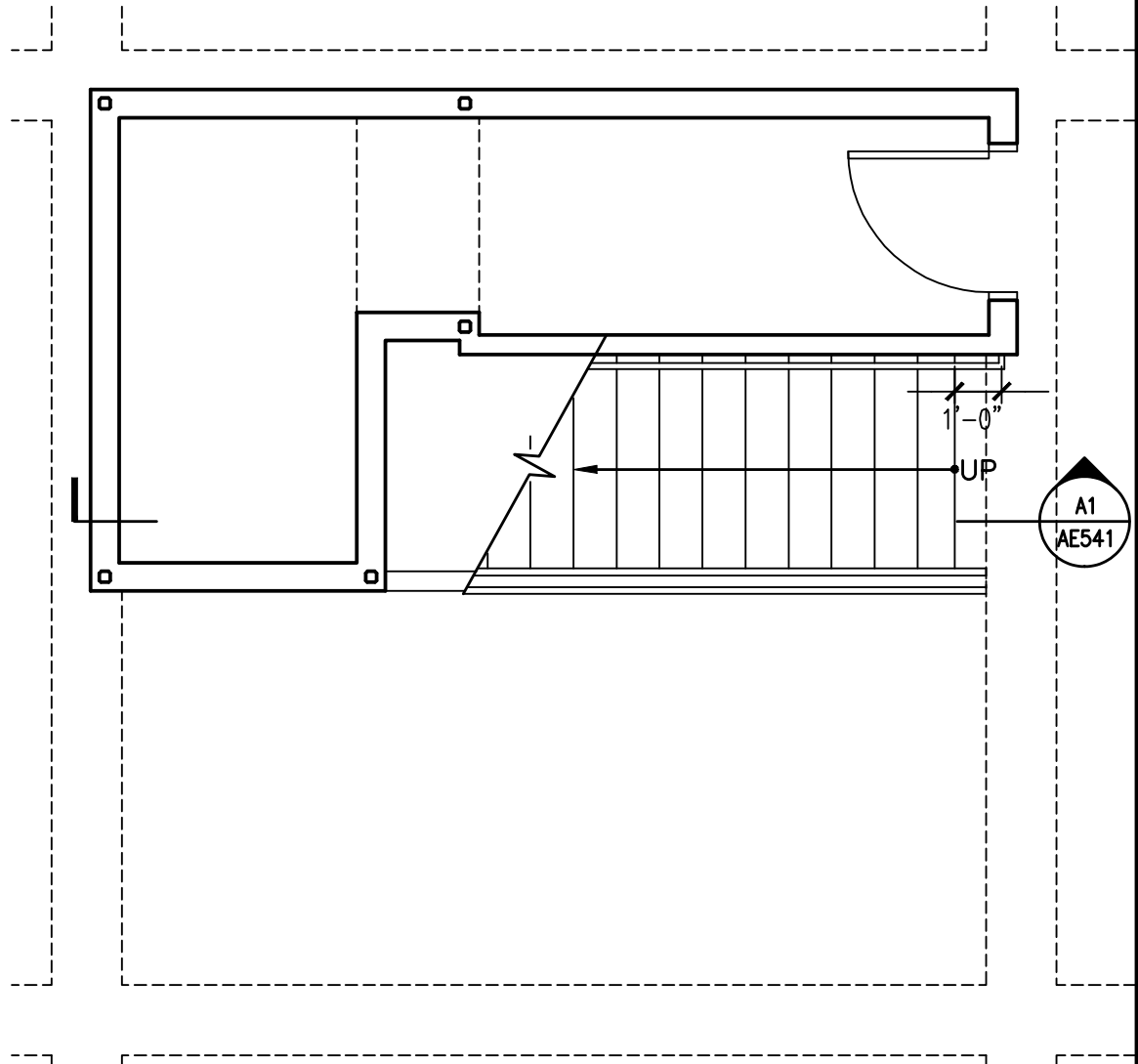
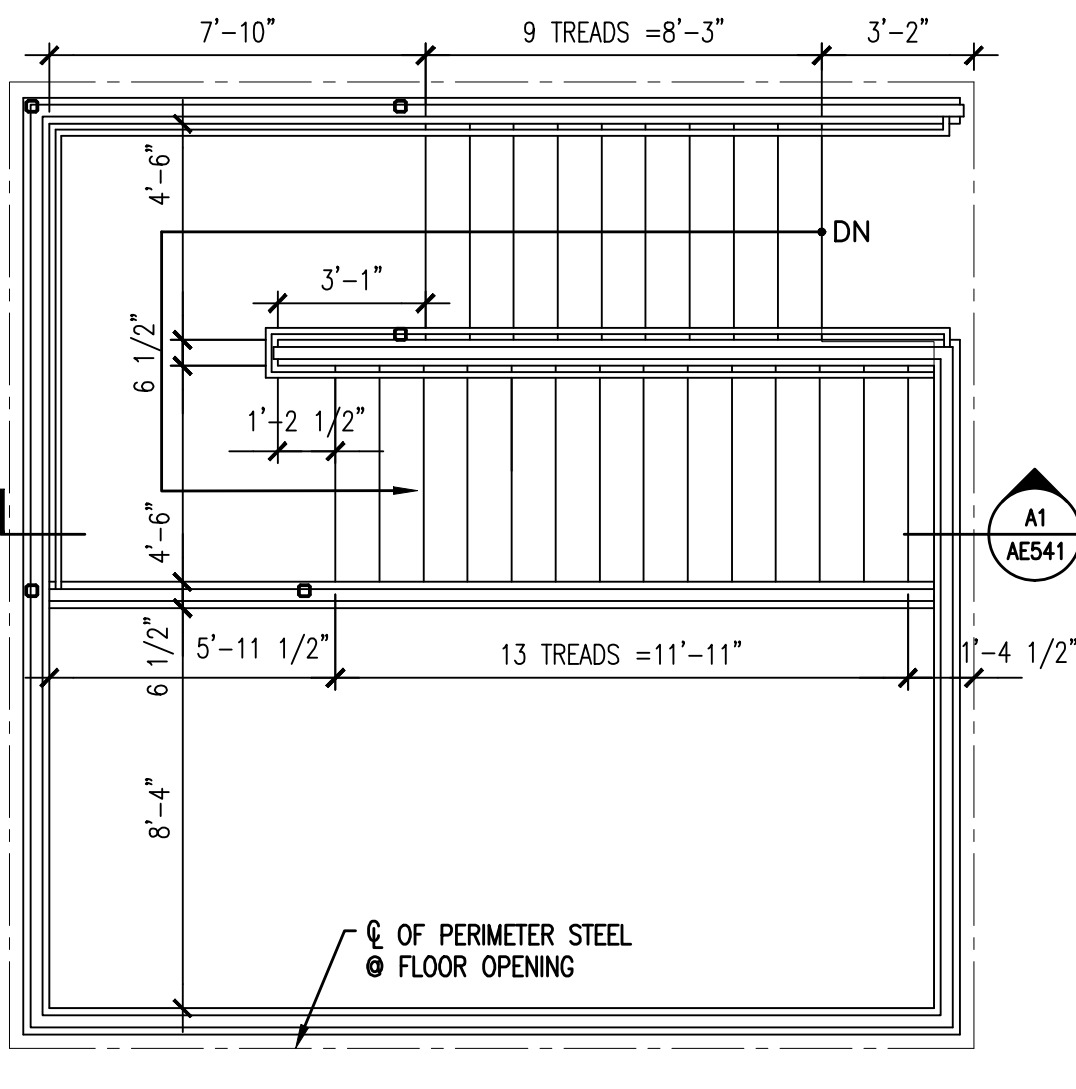
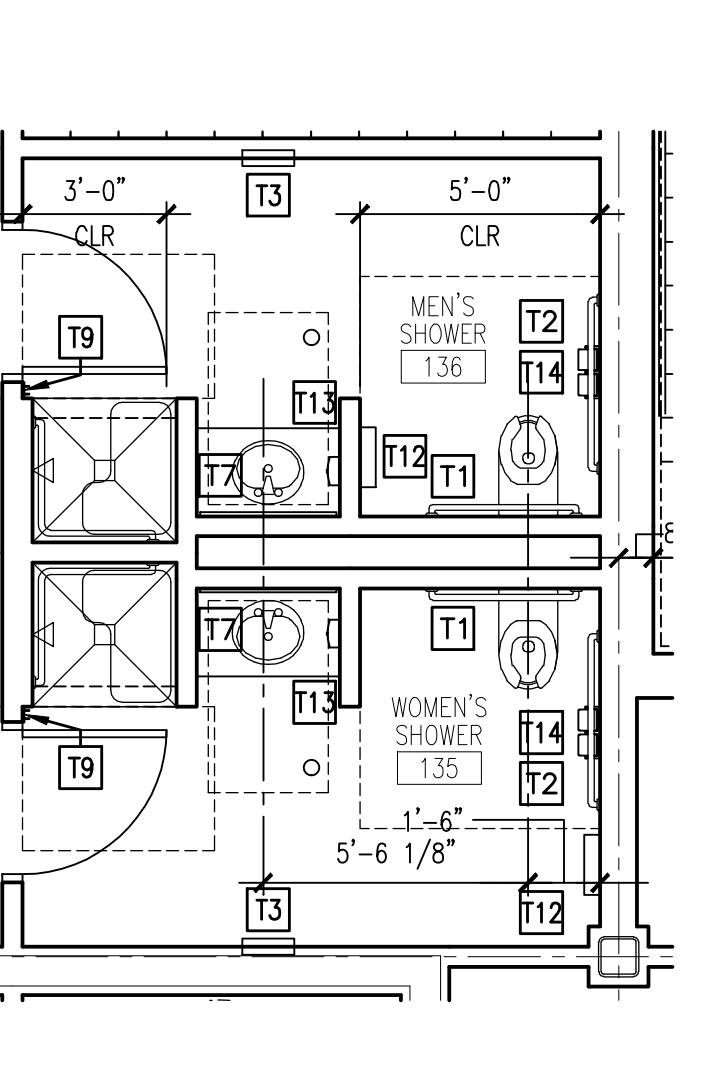
**E3 ENLARGED PLAN TOILET 238**

**E5 ENLARGED PLAN TOILET 347**

**E7 ENLARGED PLAN TOILET 149**

**E9 ENLARGED PLAN STAIR 204**

**E11 ENLARGED PLAN STAIR 205**



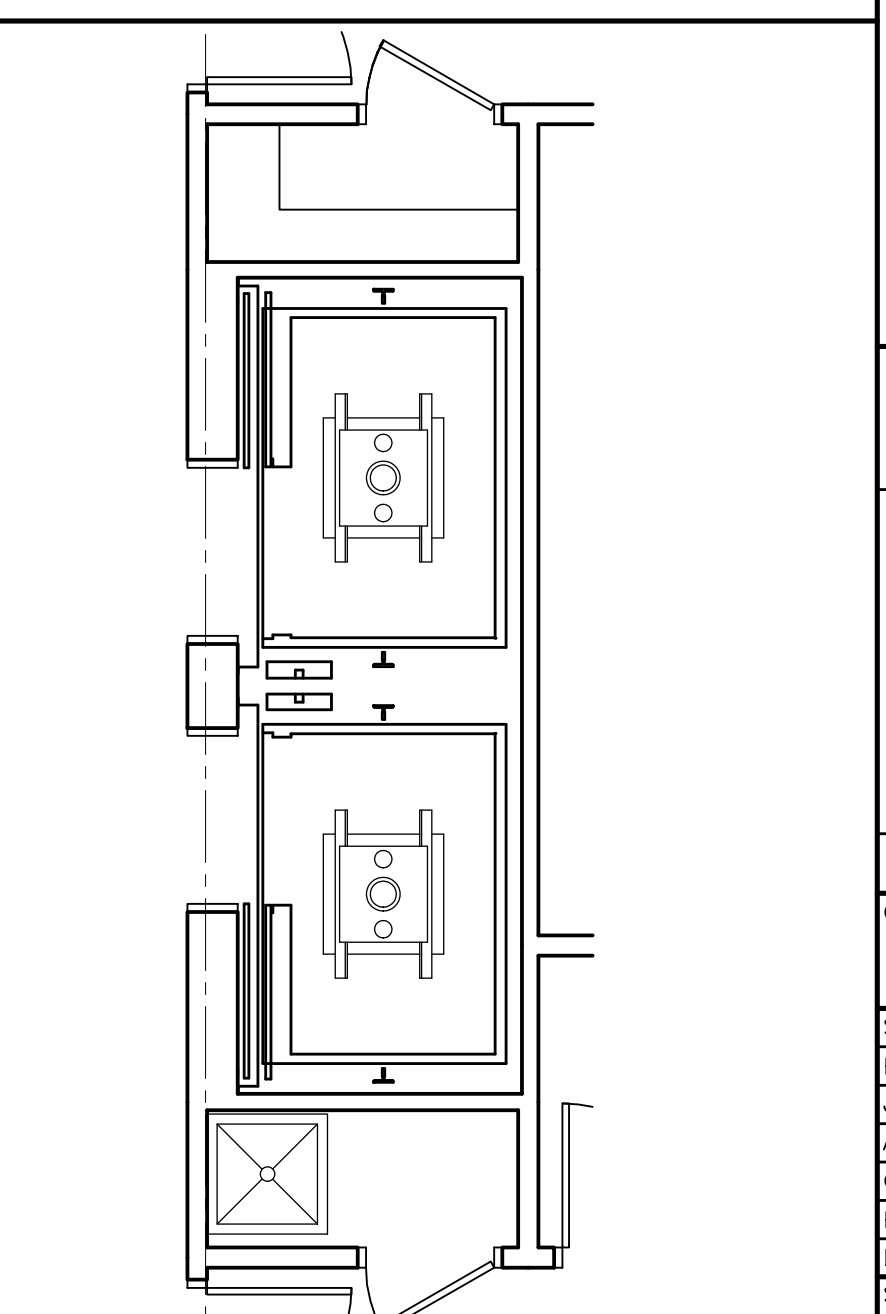
**A1 ENLARGED PLAN SHOWERS 136 & 135**

**A3 ENLARGED PLAN STAIRS @ GALLERY 301**

**A6 ENLARGED PLAN STAIRS @ HALL 201**

**A9 ENLARGED PLAN STAIR 104**

**A11 ENLARGED PLAN STAIR 105**



**A13 ENLARGED PLAN @ ELEVATORS**

**SM SRT**

ARCHITECTURE ENGINEERING PLANNING  
SWRT  
144 Fore Street/P.O. Box 618  
Portland, Maine 04104  
tel. (207) 772-3846  
fax. (207) 772-1070

PROJECT NORTH

MAINE TURNPIKE AUTHORITY  
ADMINISTRATION BUILDING  
PORTLAND, MAINE

ISSUED FOR BIDDING/CONSTRUCTION  
7-9-07

REV	DESCRIPTION	DATE
0	BIDDING/CONSTRUCTION	7-9-07

GRAPHIC SCALE: 0" = 1"

SCALE: AS NOTED

PROJECT MANAGER: SLB  
JC/DRAWN BY: TCM/TCM  
A/E OF RECORD: SLB  
CAD FILE: AE401-06016  
PROJECT NO: 06016  
DATE: 7-9-07

SHEET TITLE:  
**ENLARGED PARTIAL PLANS**

SHEET No. **AE401**