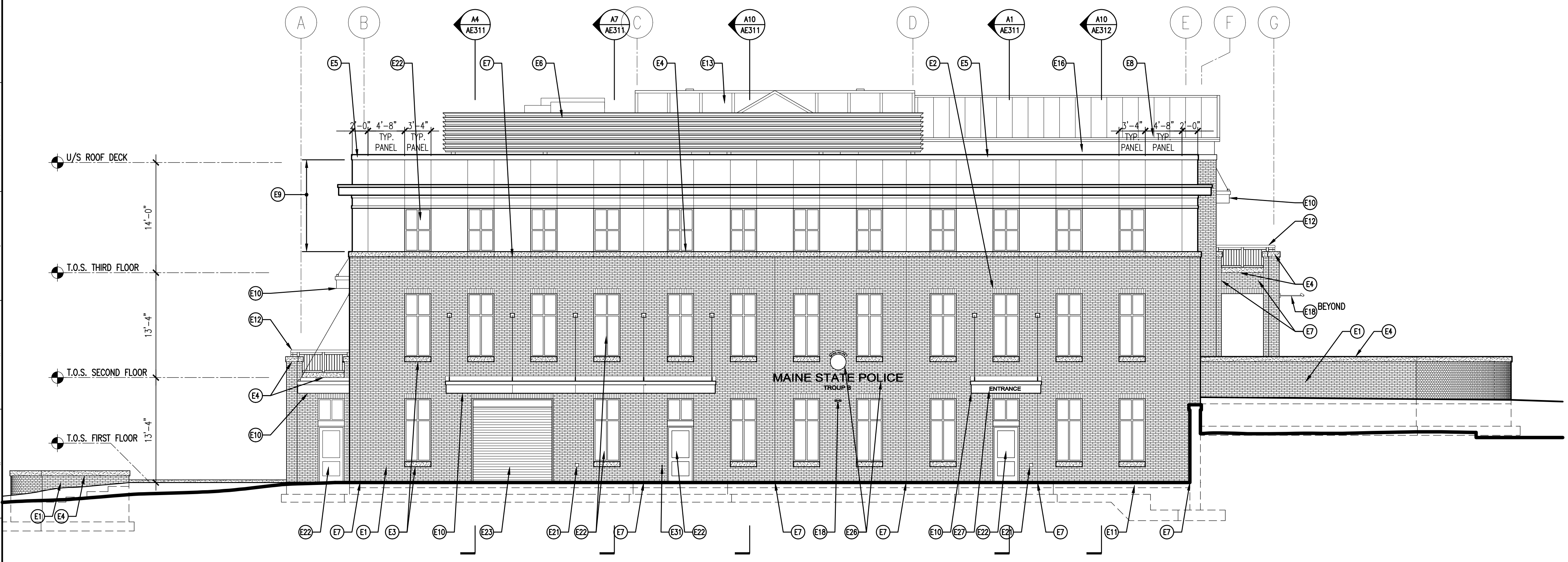


**G1** EXTERIOR ELEVATION – SOUTH

1/8" = 1'-0"



**A1** EXTERIOR ELEVATION – WEST

1/8" = 1'-0"

**GENERAL NOTES:**

1. SEE G101 FOR PROJECT GENERAL NOTES.

**ELEVATION KEY NOTES:**

- E1 FACE BRICK MASONRY
- E2 FACE BRICK SOLDIER COURSE
- E3 GRANITE SILL, RE: A7/AE532 FOR PROFILES
- E4 GRANITE COPING, RE: A7/AE532 FOR PROFILES
- E5 METAL FASCIA
- E6 MECHANICAL EQUIPMENT SCREEN
- E7 MASONRY EXPANSION JOINT
- E8 STANDING SEAM METAL ROOF
- E9 METAL-FACED COMPOSITE WALL PANEL ASSEMBLY
- E10 METAL-FACED COMPOSITE FASCIA
- E11 BRICK SHELF
- E12 METAL GUARDRAIL (HANDRAIL @ SITE STAIR), RE: A1/AE544 FOR BALCONY RAIL ELEVATIONS
- E13 FIBERGLASS SANDWICH PANEL SKYLIGHT ASSEMBLY
- E14 RECESSED FACE BRICK AT MASONRY OPENING
- E15 METAL FLASHING
- E16 METAL-FACED COMPOSITE WALL PANEL KNEEWALL
- E17 EQUIPMENT PAD
- E18 SURFACE-MOUNTED UPLIGHT FIXTURE
- E19 SANITARY DRAIN PENETRATION
- E20 STORM DRAIN PENETRATION
- E21 ELECTRICAL OUTLET
- E22 ALUMINUM-FRAMED STOREFRONT/ENTRANCE SYSTEM
- E23 OVERHEAD COILING DOOR
- E24 SUPPLY WATER PENETRATION
- E25 ELECTRICAL DUCT BANK
- E26 RAISED METAL SIGNAGE
- E27 APPLIED SIGNAGE
- E28 GAS METER
- E29 MECHANICAL CONNECTION
- E30 HOLLOW METAL DOOR & FRAME WITH ALUMINUM-FRAME TRANSOM ABOVE
- E31 WALL HYDRANT
- E32 FIRE DEPARTMENT CONNECTION & BELL
- E33 SITE IRRIGATION PENETRATION
- E34 FIRE PROTECTION PENETRATION
- E35 MECHANICAL AIR INTAKES
- E36 FIRE PROTECTION DRAIN
- E37 BRICK VENT
- E38 DOCK BUMPERS

PROJECT TITLE:  
**MAINE TURNPIKE AUTHORITY  
 ADMINISTRATION BUILDING**  
 PORTLAND, MAINE

CURRENT ISSUE STATUS:  
**ISSUED FOR BIDDING/CONSTRUCTION  
 7-9-07**

REV	DESCRIPTION	DATE
0	BIDDING/CONSTRUCTION	7-9-07

GRAPHIC SCALE:  
 0" = 1"

SCALE: AS NOTED  
 PROJECT MANAGER: SLB  
 JC/DRAWN BY: TCM/TCM  
 A/E OF RECORD: SLB  
 CAD FILE: AE201-06016  
 PROJECT NO: 06016  
 DATE: 7-9-07

SHEET TITLE:  
**EXTERIOR ELEVATIONS**

SHEET No. **AE201**  
 © COPYRIGHT 2007 SRT INC.