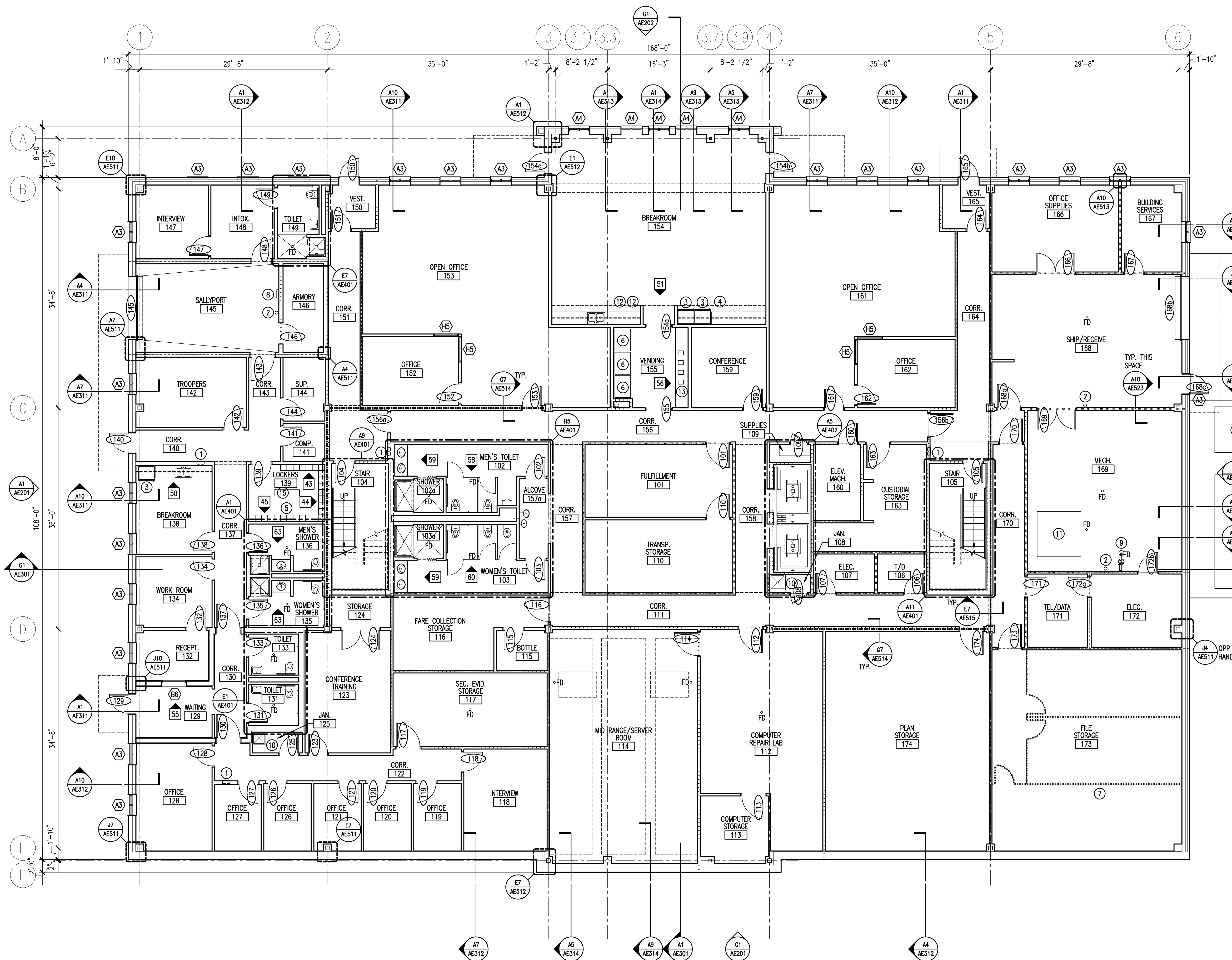


GENERAL NOTES:

1. SEE G1001 FOR PROJECT GENERAL NOTES.

FLOOR PLAN NOTES:

1. REFER TO AE600 SERIES DRAWINGS FOR WINDOW AND DOOR TYPES.



RE: STRUCT. FOR DIMENSIONS AND DETAILS @ LOADING/EQUIPMENT AREA

KEY NOTES:

- | | |
|---------------------------|-------------------------------------|
| 1 FIRE EXTINGUISHER FE-1 | 9 EYE WASH/EMERGENCY SHOWER |
| 2 FIRE EXTINGUISHER FE-2 | 10 SLOP SINK W/ MOP RACK |
| 3 REFRIGERATOR | 11 HOUSEKEEPING PADS, RE: STRUCT. |
| 4 ICE MAKER | 12 COFFEE MAKER, N.I.C. |
| 5 LOCKERS | 13 BULLETIN BOARD CABINET |
| 6 VENDING MACHINE, N.I.C. | 14 AUTOMATED TELLER MACHINE, N.I.C. |
| 7 WIRE MESH PARTITIONS | 15 FIXED BENCH |
| 8 WALL MOUNTED EYE WASH | 16 STEEL ROOF LADDER |

INTERIOR ELEVATION SCHEDULE (X1)

ELEVATION	ROOM NAME & NO.	WALL	ELEVATION REFERENCE
43	LOCKERS 139	N	J1/AE218
44	LOCKERS 139	E	J1/AE218
45	LOCKERS 139	S	J1/AE218
50	BREAKROOM 138	N	E9/AE218
51	BREAKROOM 154	S	A1/AE218
58	MEN'S SHOWER (SINKS)	S	J1/AE220
59	SHOWERS 102 & 103 (SINKS)	W	J6/AE220
60	WOMEN'S SHOWER 103	N	J6/AE220
63	SHOWERS 135 & 136	N/S	A1/AE220
-	-	-	-
-	-	-	-

A1 FIRST FLOOR PLAN

1/8" = 1'-0"