

**CODES AND STANDARDS APPLICABLE TO SCOPE OF PROFESSIONAL SERVICES REQUESTED:**

- LIFE SAFETY CODE:**  
 A. NFPA, INCLUDING:  
 101 LIFE SAFETY CODE, 2003 EDITION.  
 AUTHORITY HAVING JURISDICTION:  
 MAINE STATE DEPARTMENT OF PUBLIC SAFETY, STEVEN DODGE  
 PHONE: 207-624-8737  
 FAX: 207-624-8767
- BUILDING CODE:**  
 A. THE INTERNATIONAL BUILDING CODE, 2003 EDITION  
 AUTHORITY HAVING JURISDICTION: MIKE NUGENT  
 CITY OF PORTLAND BUILDING DEPARTMENT  
 PHONE: 207-XXX-XXXX  
 FAX: 207-XXX-XXXX
- HANDICAPPED ACCESSIBILITY STANDARD:**  
 A. AMERICANS WITH DISABILITIES ACT ACCESSIBILITY GUIDELINES  
 AUTHORITY HAVING JURISDICTION:  
 MAINE STATE DEPARTMENT OF PUBLIC SAFETY, STEPHEN DODGE  
 PHONE: 207-624-8737  
 FAX: 207-624-8767

**OTHER REFERENCES:**

**BASIC LIFE SAFETY AND BUILDING CODE CRITERIA:**

**DESCRIPTION OF BUILDING FUNCTION:**  
 NEW, MULTI-STORY, COMMERCIAL OFFICE BUILDING DESIGNED TO ACCOMMODATE A SINGLE TENANT. THE WORK OF THIS CONTRACT WILL INCLUDE BOTH SHELL AND CORE, AND FIT-UP FOR ALL THREE FLOORS.

**OCCUPANT CLASSIFICATION(S):**

NEPA 101:  
 NEW BUSINESS

**USE GROUP CLASSIFICATION(S):**

THE INTERNATIONAL BUILDING CODE:  
 BUSINESS

**INCIDENTAL USE AREAS AND SPECIAL HAZARD PROTECTION AREAS:**

THE INTERNATIONAL BUILDING CODE: TABLE 302.1.1

DESCRIPTION:	SEPARATION:
SHIP/RECEIVE	SPRINKLERS + SMOKE PARTITIONS
MECHANICAL RM.	SPRINKLERS + SMOKE PARTITIONS
ELECTRICAL ENTRANCE RM. (NFPA 70)	SPRINKLERS + 1 HOUR
ELEVATOR MACHINE ROOM	SPRINKLERS + 1 HOUR
SALLYPORT (ENCLOSED PARKING GARAGE)	SPRINKLERS + 1 HOUR
ARMORY	SPRINKLERS + 1 HOUR
SECURE EVIDENCE	SPRINKLERS + SMOKE PARTITIONS
TRANSPONDERS & FULFILLMENT	SPRINKLERS + SMOKE PARTITIONS
STORAGE RMS. > 100 SF.	SPRINKLERS + SMOKE PARTITIONS

**SPECIAL USE AND OCCUPANCY:**

NONE IDENTIFIED

**OTHER PORTIONS OF THE BUILDING TO RECEIVE FIRE SEPARATION/PROTECTION MEASURES:**

DESCRIPTION:	SEPARATION:
TEL/DATA ROOMS	SPRINKLERS + SMOKE PARTITIONS
SECONDARY ELECTRICAL ROOMS	SPRINKLERS + SMOKE PARTITIONS
COMPUTER SERVER ROOMS (NFPA75)	CLEAN AGENT FIRE PROT. + 1 HOUR

**ACCESSORY USE AREAS:**

THE INTERNATIONAL BUILDING CODE: 302.2  
 ASSEMBLY: (LESS THAN 10% OF THE AREA OF EACH STORY - NON-SEPARATED)  
 BREAKROOM  
 CONFERENCE ROOMS  
 AUTHORITY ROOM

**COMMUNICATING SPACE(S):**

NFPA 101: 8.6.6  
 THE INTERNATIONAL BUILDING CODE: 707.2, EXCEPTION 7  
 DESCRIPTION:  
 HALL  
 GALLERY

SEPARATION:  
 SPRINKLERS + SMOKE PARTITIONS  
 SPRINKLERS + SMOKE PARTITIONS

**TYPE OF CONSTRUCTION:**

CAST-IN-PLACE CONCRETE FOUNDATION AND SLAB-ON-GRADE. STRUCTURAL STEEL FRAME, METAL DECK, AND CONCRETE TOPPING AT ALL FLOORS WITH STEEL JOISTS, AND METAL DECK ROOF. BRICK MASONRY OVER METAL STUD BACK-UP WITH ALUMINUM STOREFRONT AND WINDOW SYSTEMS IN MASONRY OPENINGS AT LOWER PORTION OF EXTERIOR WALLS, AND COMPOSITE ALUMINUM PANELS WITH ALUMINUM WINDOW SYSTEMS AT UPPER PORTION OF EXTERIOR WALLS.  
 NFPA: NO REQUIREMENTS.  
 THE INTERNATIONAL BUILDING CODE: TYPE 2B

BUILDING WILL BE PROTECTED THROUGHOUT BY AUTOMATIC FIRE SPRINKLERS IN CONFORMANCE WITH NFPA 13, WITH THE EXCEPTION OF THOSE AREAS BEING PROTECTED BY CLEAN AGENT FIRE PROTECTION SYSTEMS IN CONFORMANCE WITH NFPA 2001 AND IBC, SECTION 904.

**MINIMUM FIRE RESISTANCE RATINGS OF BUILDING ELEMENTS:**

ELEMENT 2B/II(000)	0 HR.	1 HR.	2 HR.
STRUCTURAL FRAME			
COL., GIRDERS & TRUSSES			
LOADBEARING EXTERIOR WALLS			
LOADBEARING INTERIOR WALLS			
NONBEARING EXTERIOR WALLS/PARTITIONS			
NONBEARING INTERIOR WALLS/PARTITIONS			
FIRE SEPARATION ASSEMBLIES:			
EXIT ENCLOSURES			
SHAFTS & ELEV. HOISTWAYS			
MIXED USE SEPARATIONS			
EXIT ACCESS CORRIDORS			
TENANT SPACES SEPARATION (MTA/S.P.)			
SMOKE BARRIERS			
FLOOR CONSTRUCTION INCLUDING BEAMS			
ROOF/CEILING:			

**BUILDING HEIGHT:**

ALLOWABLE: (THE INTERNATIONAL BUILDING CODE, TABLE 503)  
 TABLE 503  
 WITH SPRINKLER MODIFICATION  
 ACTUAL: 3 STORIES, 41 FEET +/-

**BUILDING AREA:**

ALLOWABLE: (THE BOCA, TABLE 503)	ACTUAL:
TABLE 503	23,000 SF
STREET FRONTAGE INCREASE	12,650 SF
SPRINKLER MODIFICATION	46,000 SF
MAX. ALLOWABLE AREA (FLOOR)	81,650 SF
MAX. BLDG. AREA	244,950 SF
FLOOR	18,340 SF
BUILDING	54,716 SF

**MEANS OF EGRESS:**

OCCUPANT LOAD:  
 FIRST FLOOR: 284  
 SECOND FLOOR: 338  
 THIRD FLOOR: 340  
 962

MINIMUM NUMBER: TWO, INCLUDING ALL ROOMS AND AREAS WITH OVER 50 OCCUPANTS.

CAPACITY:  
 EXIT ACCESS: ALLOWABLE MINIMUM WIDTH 44 IN.  
 DOORS: ALLOWABLE MINIMUM WIDTH 36 IN.

ARRANGEMENT:  
 MAX. ALLOWABLE DEAD-END CORRIDOR: 50 FT.  
 MAX. ALLOWABLE TRAVEL DISTANCE: 300 FT.  
 MAX. ALLOWABLE COMMON PATH OF TRAVEL 100 FT.

**ILLUMINATION OF MEANS OF EGRESS:**  
 EGRESS WILL BE ILLUMINATED BY LIGHT FIXTURES ON A CIRCUIT POWERED BY AN EMERGENCY GENERATOR CONFORMING WITH NFPA 110.

**PROTECTION FROM HAZARDS:**  
 WATER BASED AUTOMATIC FIRE PROTECTION SYSTEM CONFORMING WITH NFPA 13, TYPICAL THROUGHOUT THE BUILDING UNLESS NOTED OTHERWISE.

CLEAN AGENT AUTOMATIC FIRE PROTECTION SYSTEM CONFORMING WITH NFPA 2001 IN LIMITED AREAS AS DESCRIBED ON THE DRAWINGS.

SPECIAL HAZARD PROTECTION AREAS WILL BE FIRE OR SMOKE SEPARATED AS IDENTIFIED ABOVE.

**PROTECTION OF VERTICAL OPENINGS:**  
 VERTICAL OPENINGS WILL BE PROTECTED TO MAINTAIN THE INTEGRITY OF AREA SEPARATIONS. REFERENCE MINIMUM FIRE RESISTANCE RATINGS OF STRUCTURAL ELEMENTS ABOVE.

**INTERIOR FINISH:**

WALL AND CEILING FINISHES:	EXITS	CORRIDORS	ROOMS
USE GROUP			
A			
FLAME SPREAD*	0-25	0-25 TYP.	0-75 CONF. & AUTH. RMS.
SMOKE DEVELOPMENT**	0-450	0-450	0-200 TYP.

\*ASTM E84

\*\*NFPA 255

**FLOOR FINISHES:**

USE GROUP	EXITS	CORRIDORS	ROOMS
CRITICAL RADIANT FLUX*	NO REQUIREMENTS		
ASTM E648**	CLASS II (0.22 WATTS/CM2)		

\*NFPA 253

\*\*IBC

**DETECTION, ALARM AND COMMUNICATION SYSTEMS:**

A FIRE ALARM SYSTEM WILL BE REQUIRED IN ACCORDANCE WITH NFPA 101, 9.6.

**EXTINGUISHMENT:**

PORTABLE EXTINGUISHERS IN ACCORDANCE WITH NFPA 101, 9.7.4.1.

**END OF CODE COMPLIANCE STRATEGY REPORT**

**GENERAL NOTES:**

1. SEE G101 FOR PROJECT GENERAL NOTES.

**LEGEND:**

(LEGEND IS FOR THIS SHEET ONLY)

[Hatch pattern] HATCH INDICATES GENERAL AREAS OF HORIZONTAL STRUCTURAL STEEL TO RECEIVE SPRAY-ON FIREPROOFING AND VERTICAL AND DIAGONAL STRUCTURAL STEEL TO BE INDIVIDUALLY WRAPPED WITH GWB AND SEALED TIGHT. REFER TO STRUCTURAL DRAWINGS FOR ADDITIONAL INFORMATION.

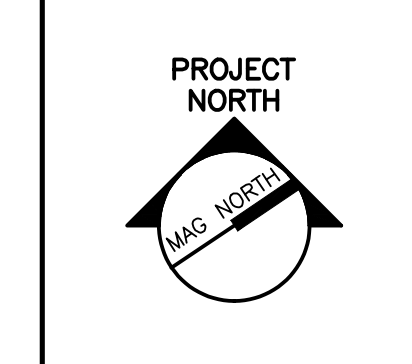
[Hatch pattern] HATCH INDICATES AREAS OF 1 HOUR FIRE-RATED SHAFTS.

[Hatch pattern] HATCH INDICATES AREAS TO RECEIVE CLEAN AGENT FIRE PROTECTION.

[Hatch pattern] HATCH INDICATES AREAS TO RECEIVE DOUBLE PRE-ACTION DRY FIRE PROTECTION.

- [Solid line] SECURE 1 HOUR FIRE-RATED SEPARATION
- [Dashed line] NON-SECURE 1 HOUR FIRE-RATED SEPARATION
- [Dotted line] SMOKE BARRIER

**SMT SRT**  
 ARCHITECTURE ENGINEERING PLANNING  
 144 Fore Street/P.O. Box 618  
 Portland, Maine 04104  
 tel. (207) 772-3646  
 fax. (207) 772-1070



PROJECT TITLE:  
**MAINE TURNPIKE AUTHORITY  
 ADMINISTRATION BUILDING**  
 PORTLAND, MAINE

CURRENT ISSUE STATUS:  
**ISSUED FOR BIDDING/CONSTRUCTION**  
 7-9-07

REV	DATE	DESCRIPTION
0	7-9-07	BIDDING/CONSTRUCTION

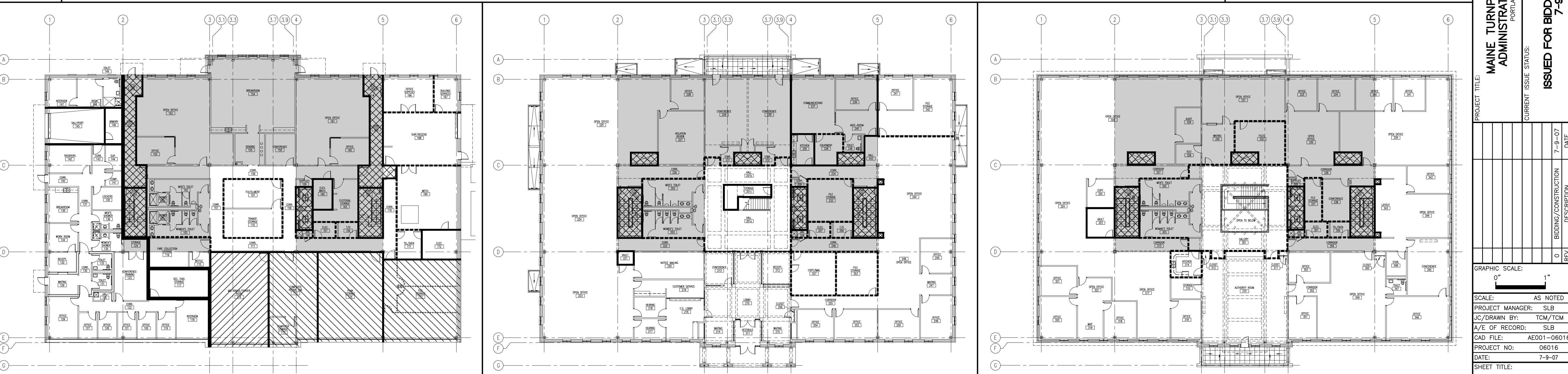
GRAPHIC SCALE:  
 0" = 1"

SCALE: AS NOTED  
 PROJECT MANAGER: SLB  
 JC/DRAWN BY: TCM/TCM  
 A/E OF RECORD: SLB  
 CAD FILE: AE001-06016  
 PROJECT NO: 06016  
 DATE: 7-9-07

SHEET TITLE:  
**CODE COMPLIANCE INFORMATION**

SHEET No. **AE001**  
 © COPYRIGHT 2007 SMT SRT

**F1 LIFE SAFETY AND BUILDING CODE COMPLIANCE STRATEGY REPORT**



<b>A1</b>	<b>FIRST FLOOR CODE DIAGRAM</b>	<b>A6</b>	<b>SECOND FLOOR CODE DIAGRAM</b>	<b>A11</b>	<b>THIRD FLOOR CODE DIAGRAM</b>
1" = 20'-0"	-	1" = 20'-0"	-	1" = 20'-0"	-