

John W. Einsiedler, R.A.  
 Architecture  
 148 Sea Road, Kennebunk, Maine 04043  
 Phone 207-485-0900 Fax 207-485-1616  
 e-mail: jw@jwarchitecture.com  
 Architects • Interior Design • Universal Design

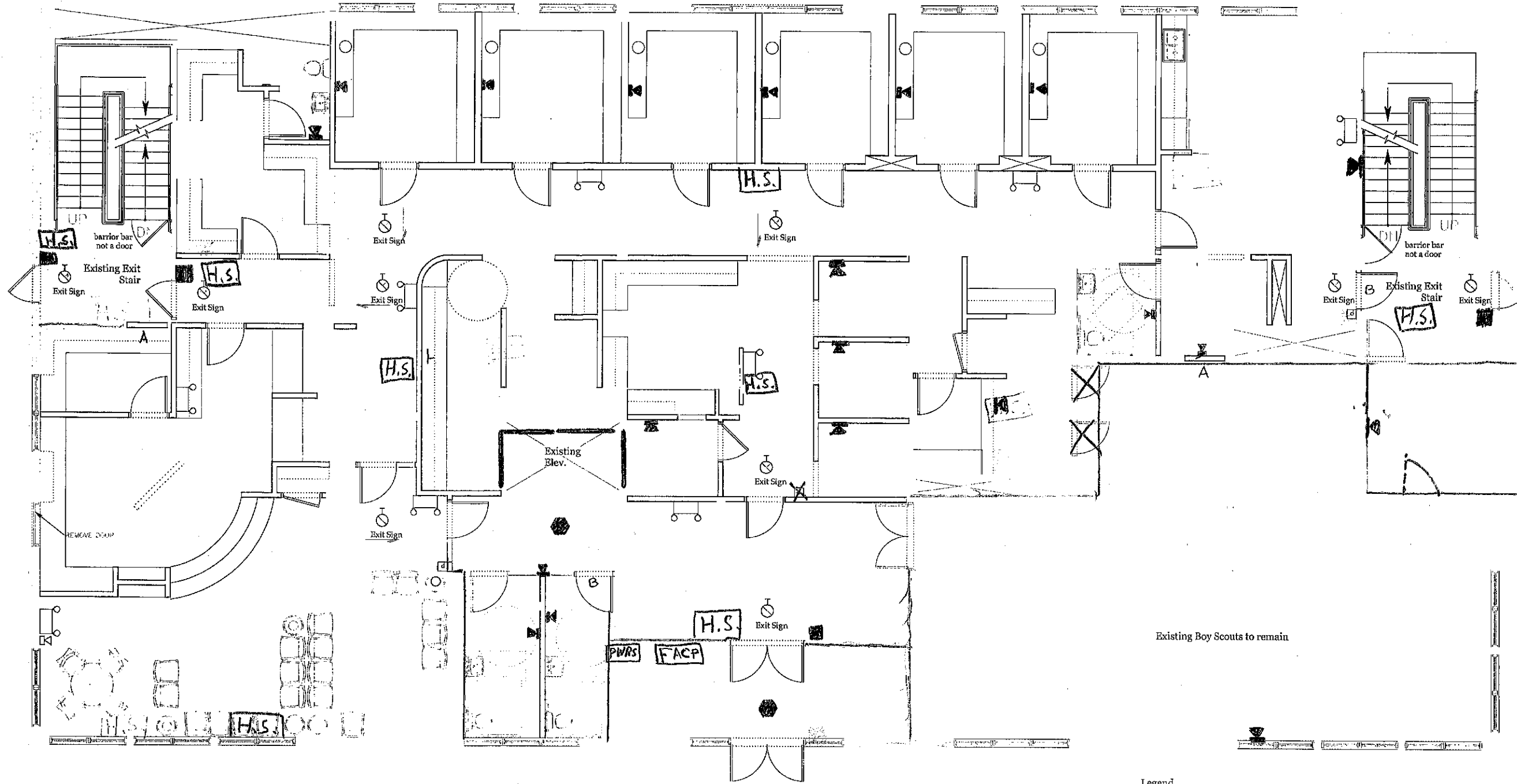
**Trades Center Inc.**  
 General Contractor • Design • Build

PROJECT:  
 440 Western Ave Associates Renovation  
 Portland/Maine  
 131 Johnson Road

Drawings This Sheet:  
**FIRST FLOOR PLAN**

**A1**

Construction Set  
 December 11, 2014



- Legend
- Emergency Light
  - H.S. Horn/Strobe
  - Strobe
  - Exit Sign
  - Pull Station

**First Floor Plan**  
 Scale: 1/4" = 1'-0"  
 NOTE: see Sheet A3 for  
 Accessibility Details. All passage  
 doors and openings 36", with  
 lever handles.



Reviewed for Code Compliance  
 Permitting and Inspections Department  
 Approved with Conditions  
 01/02/2020

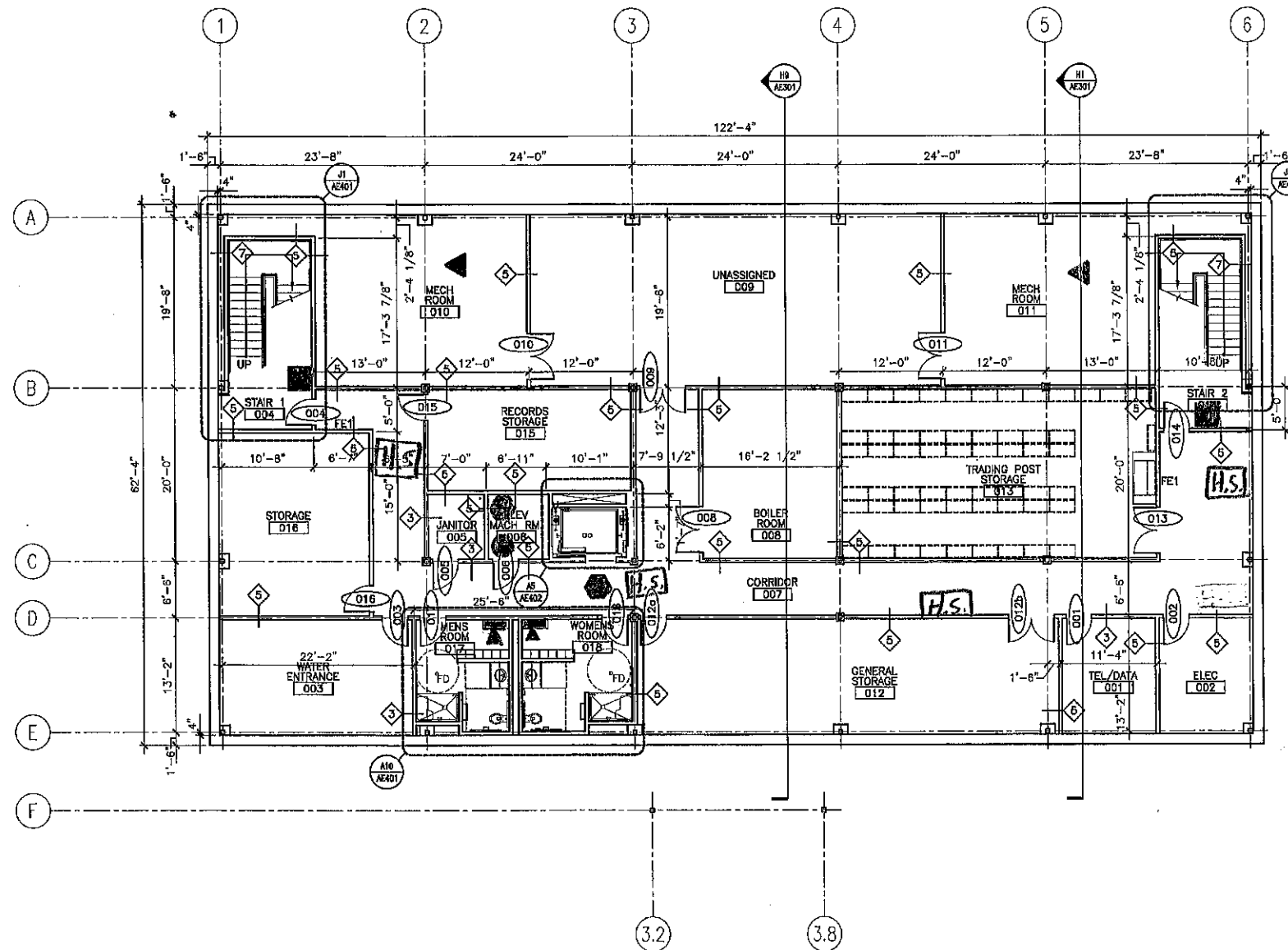


Reviewed for Code Compliance  
 Permitting and Inspections Department  
 Approved with Conditions  
 01/02/2020

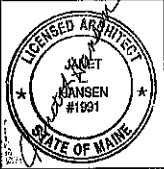
- ◀ = Duct Detector
- = Heat detector
- = Pull station
- ◆ = smoke

**GENERAL NOTES:**

1. DO NOT SCALE THE DRAWINGS.
2. ALL SEALANT, FIRE STOPPING, AND SMOKE STOPPING ASSEMBLIES SHALL BE U.L. RATED.
3. DIMENSIONS ARE FACE OF MASONRY, AND CENTERLINE OF STUD PARTITIONS, UNLESS INDICATED OTHERWISE.
4. REFER TO SHEET G1002 FOR TYPICAL MOUNTING HEIGHTS OF PLUMBING FIXTURES, RESTROOM ACCESSORIES & MISCELLANEOUS ITEMS.
5. REFER TO G1002 FOR TOP OF WALL DETAILS.
6. REFER TO ALL CONSTRUCTION DOCUMENTS FOR REQUIREMENTS WHICH MAY AFFECT THE WORK IN ANOTHER AND COORDINATE WORK.
7. REFERENCE DETAILS FOR ADDITIONAL DIMENSIONAL INFORMATION.
8. DOOR JAMBS SHALL BE LOCATED 6" FROM CORNER IN STUD PARTITIONS, UNLESS INDICATED OTHERWISE.
9. REFER TO AE401 FOR TOILET ACCESSORIES.



ARCHITECTURE ENGINEERING PLANNING  
 SMT  
 144 Park Street, P.O. Box 618  
 Portland, Maine 04104  
 Tel: (207) 772-3846  
 Fax: (207) 772-1072



PROJECT TITLE: THE ALTON E. "CHUCK" CIANCHETTE  
 SCOUT SERVICE CENTER  
 PINE TREE COUNCIL, BOY SCOUTS OF AMERICA  
 FORTLAND, ME.  
 CURRENT ISSUE STATUS: ISSUED FOR CONSTRUCTION  
 3-31-04

REV	DESCRIPTION	DATE

GRAPHIC SCALE:

SCALE: 1/8"=1'-0"  
 PROJECT MANAGER: JH  
 JC/DRAWN BY: RAL  
 A/E OF RECORD: JH  
 SMT CAD FILE: AE100-03182  
 PROJECT NO: 03182  
 DATE: 3-31-04  
 SHEET TITLE:

BASEMENT PLAN  
 SHEET No. AE100

A1 BASEMENT PLAN  
 1/8"=1'-0"