

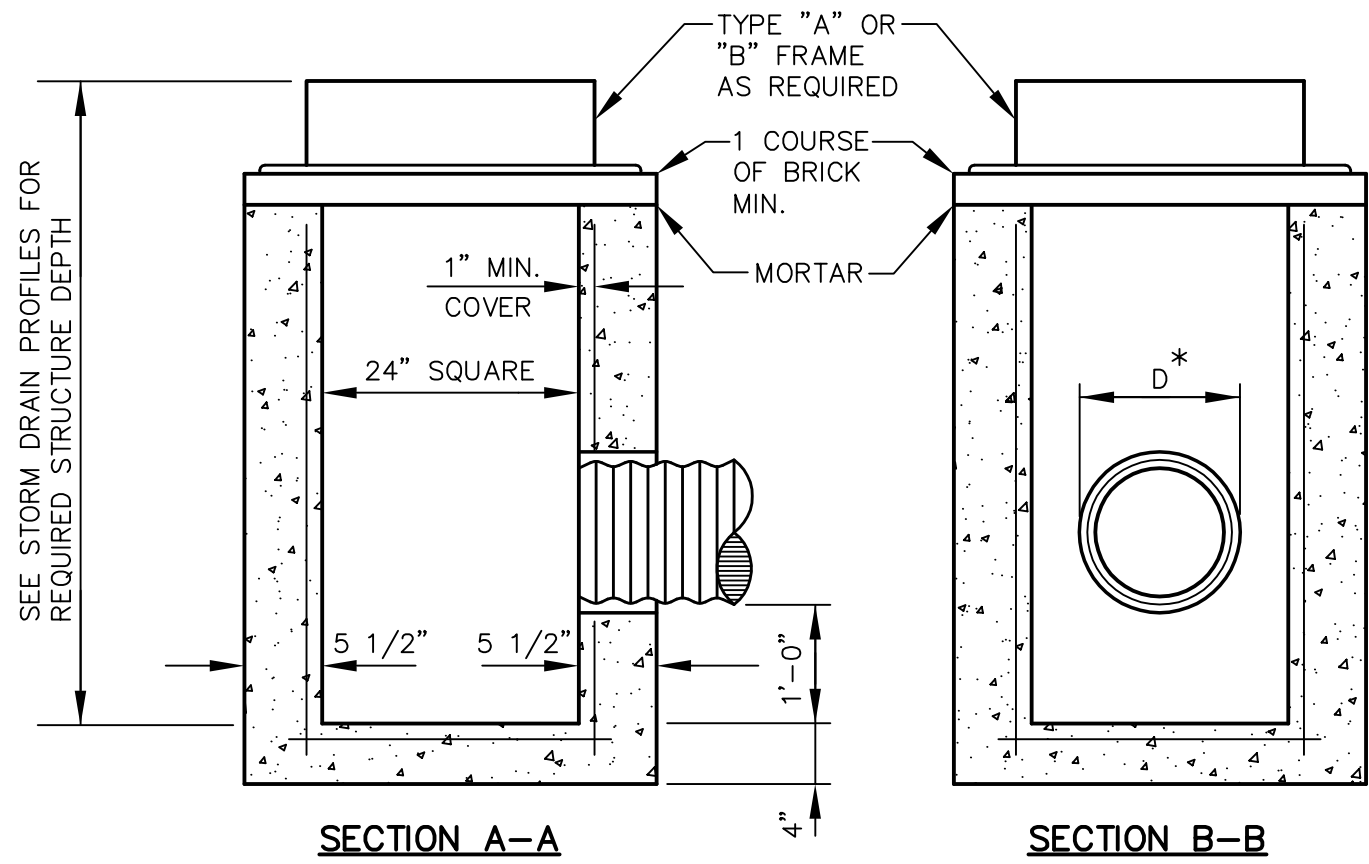
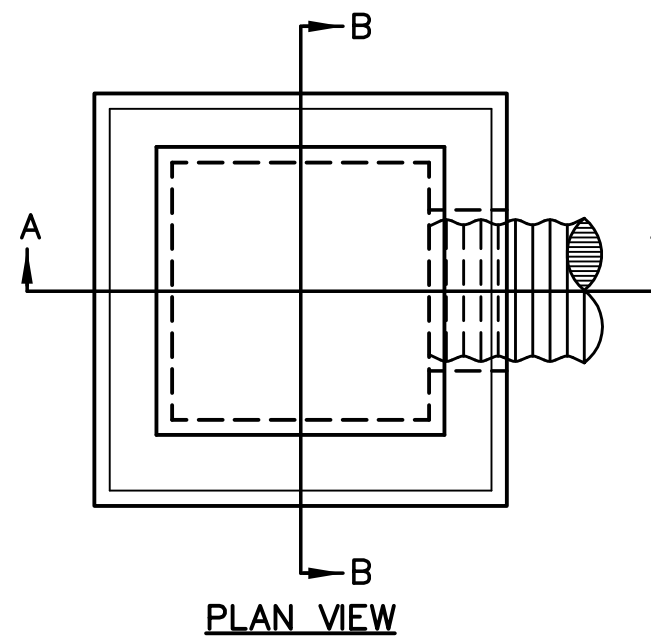
DESIGN NOTES:

1. ALL CONCRETE TO HAVE A MIN. OF 4,000 PSI COMPRESSIVE STRENGTH AT 28 DAYS.
2. DESIGN LOAD FOR H-20 WHEEL LOAD.
3. CATCH BASIN TO CONFORM TO ASTM-C478 SPECIFICATIONS.
4. REINFORCE TO 0.12 IN SQ./LF..

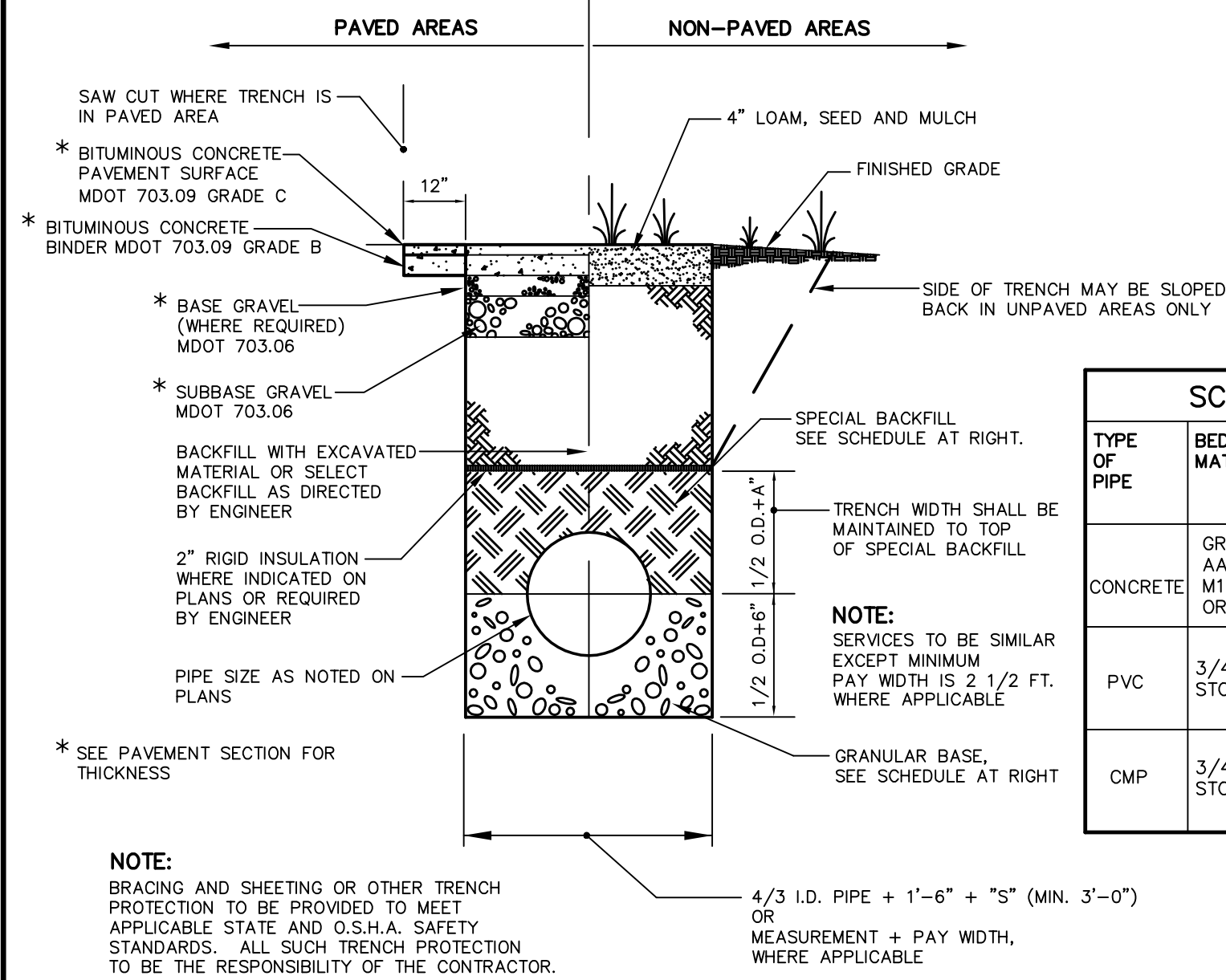
NOTE:

ENTIRE CATCH BASIN WITH EXCEPTION OF LEVELING BRICK FRAME AND GRATE TO BE PRECAST AS SINGLE PORTLAND CEMENT CONCRETE UNIT.

* DIAMETER OF HOLE (D) TO BE 3" LARGER THAN THE INSIDE DIAMETER OF FLEXIBLE PIPE OR THE OUTSIDE DIAMETER OF RIGID PIPE.

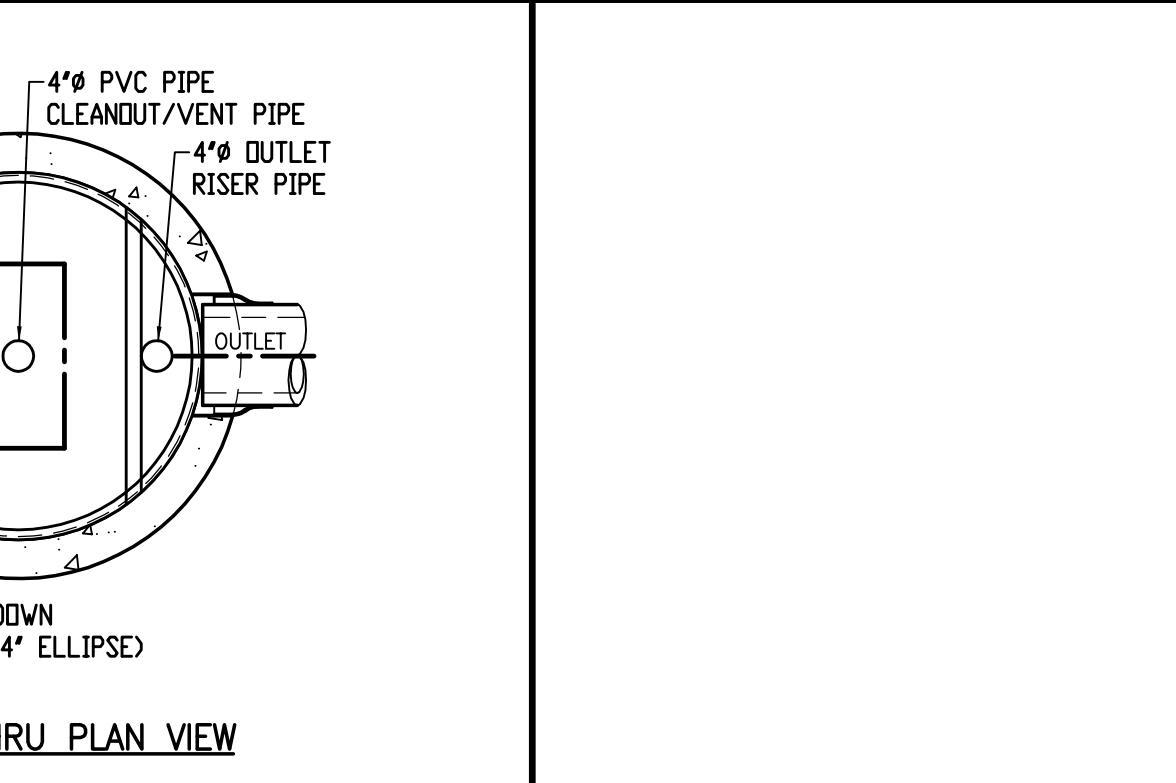
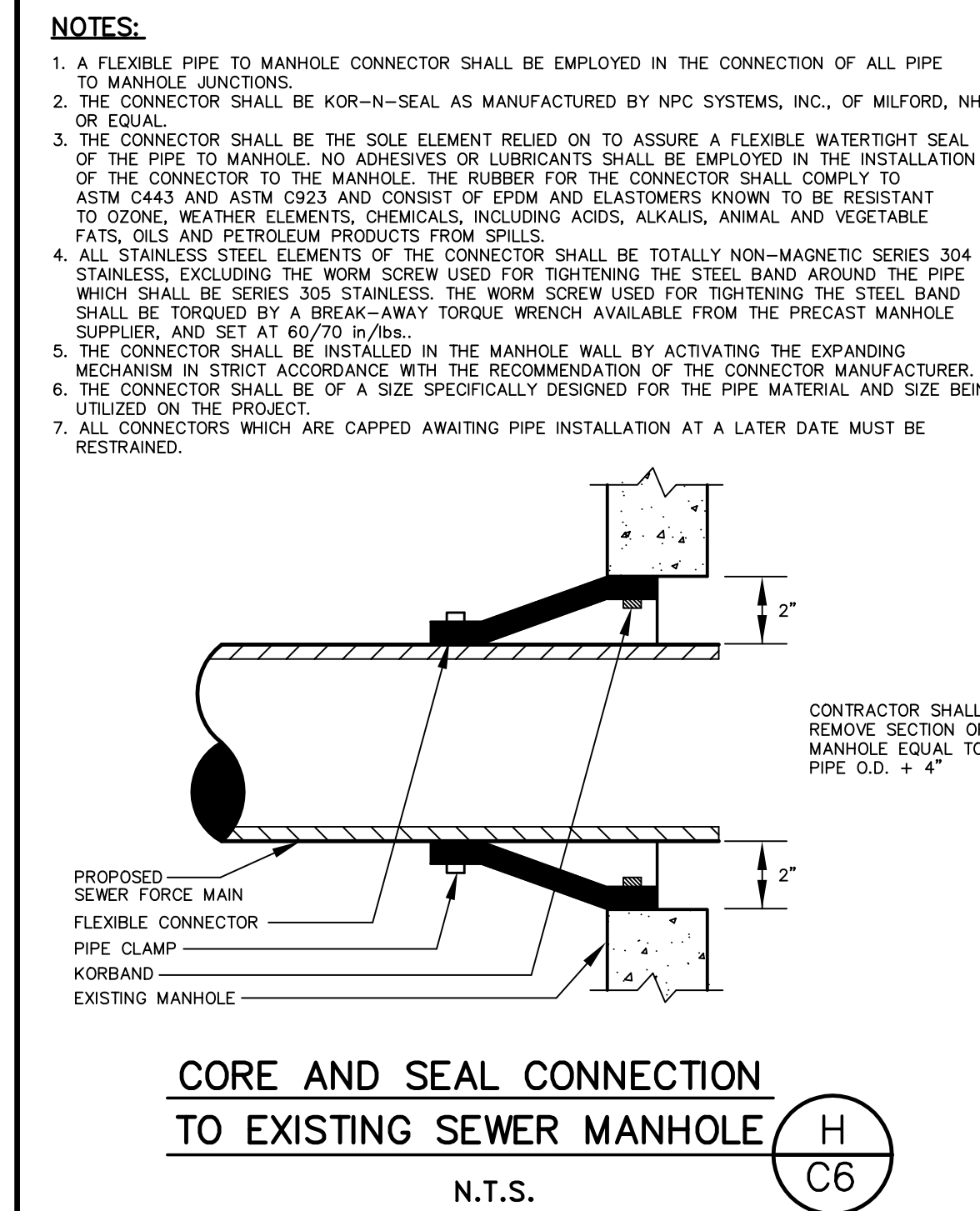
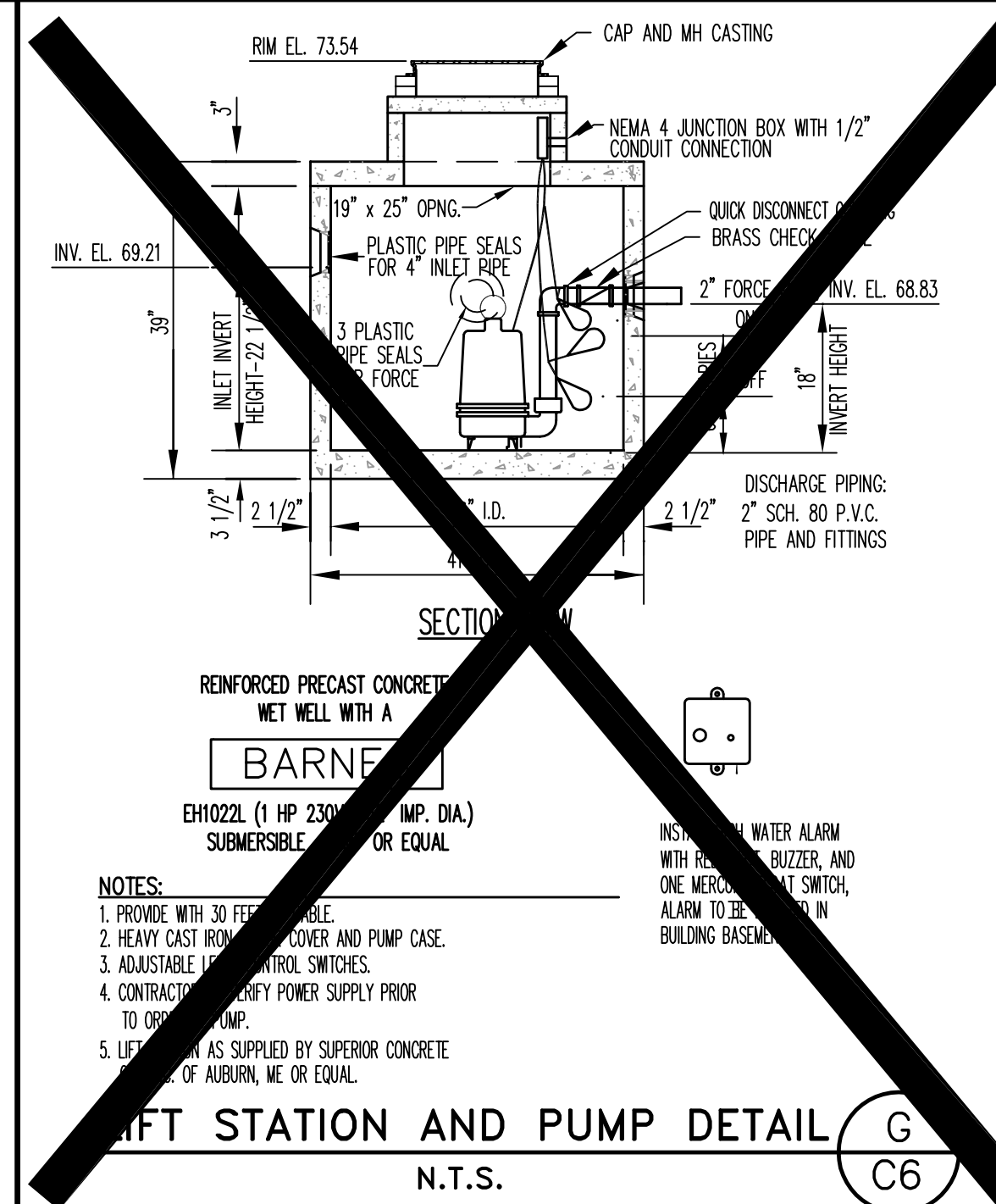


TYPE 'D' CATCH BASIN (A) (C5)

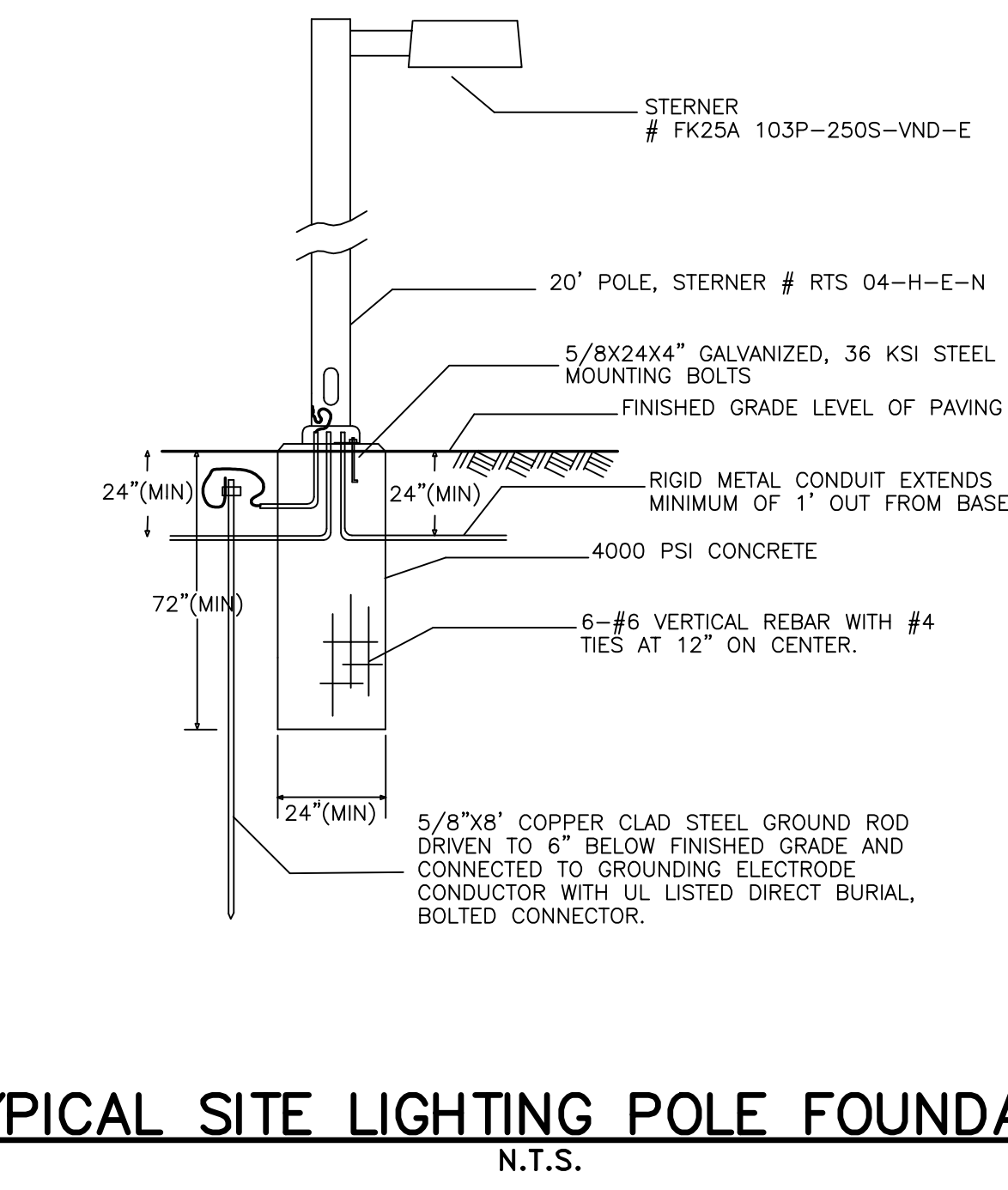


TYPICAL SEWER AND STORM DRAIN TRENCH SECTION (D) (D) (C5) (C6)

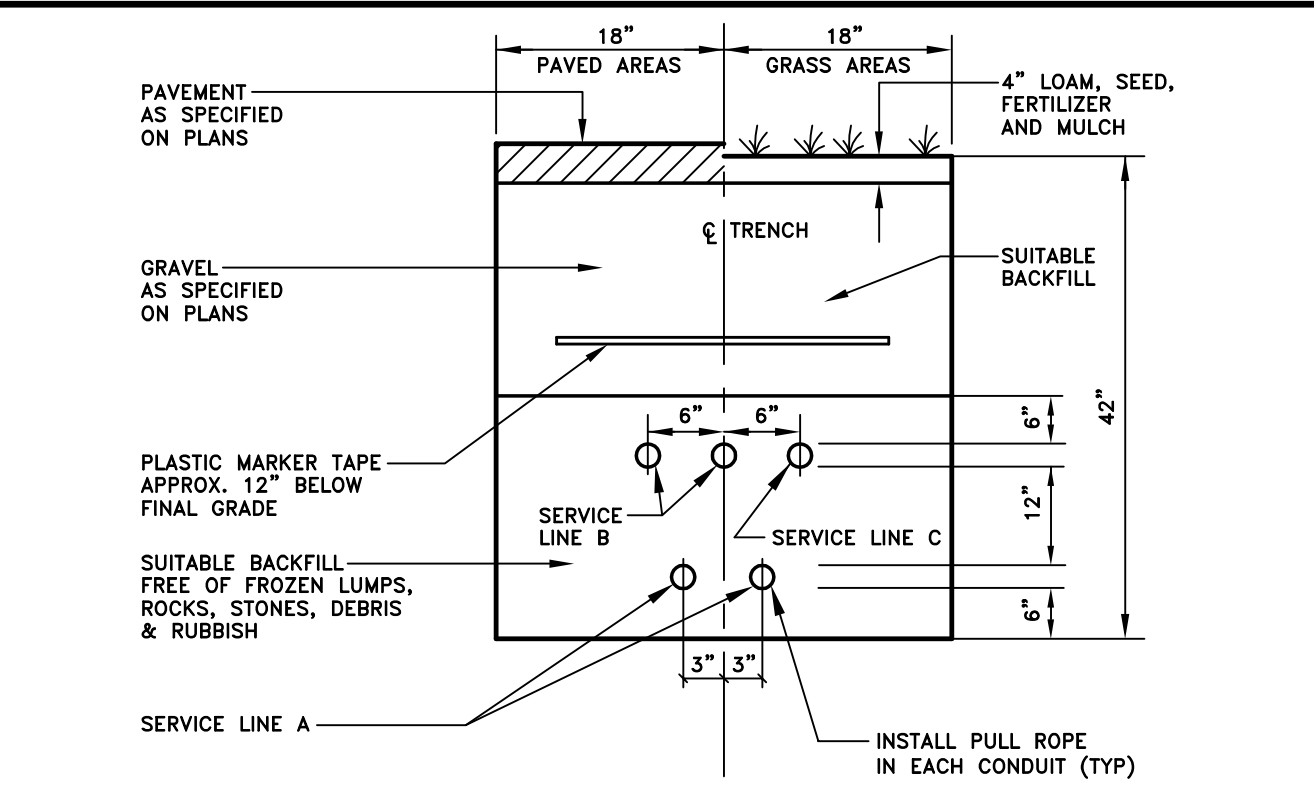
SCHEDULE OF BASE BACKFILL				
TYPE OF PIPE	BEDDING MATERIAL	SPECIAL BACKFILL	SPECIAL BACKFILL COVER "A" (IN)	SELECT BACKFILL
CONCRETE	GRANULAR AASHTO M145-49 A-3 OR BETTER	GRANULAR AASHTO M145-49 A-3 OR BETTER	12	GRANULAR AASHTO M145-49 A-3 OR BETTER
PVC	3/4" CRUSHED STONE	GRANULAR AASHTO M145-49 A-3 OR BETTER	6	GRANULAR AASHTO M145-49 A-3 OR BETTER
CMP	3/4" CRUSHED STONE	GRANULAR AASHTO M145-49 A-3 OR BETTER	6	GRANULAR AASHTO M145-49 A-3 OR BETTER



- NOTES:**
1. THIS DETAIL IS BASED UPON THE DIMENSIONS FOR A STC 4501 PRECAST CONCRETE STORMCEPTOR UNIT. OTHER ACCEPTABLE MANUFACTURERS INCLUDE H.I.L. TECHNOLOGIES, DOWNSTREAM DEFENDER AND STORMKING.
 2. USE FLEXIBLE BOOT CONNECTIONS AT THE INLET AND OUTLET.
 3. THE COVER SHOULD BE POSITIONED OVER THE CLEANOUT/VENT PIPE.

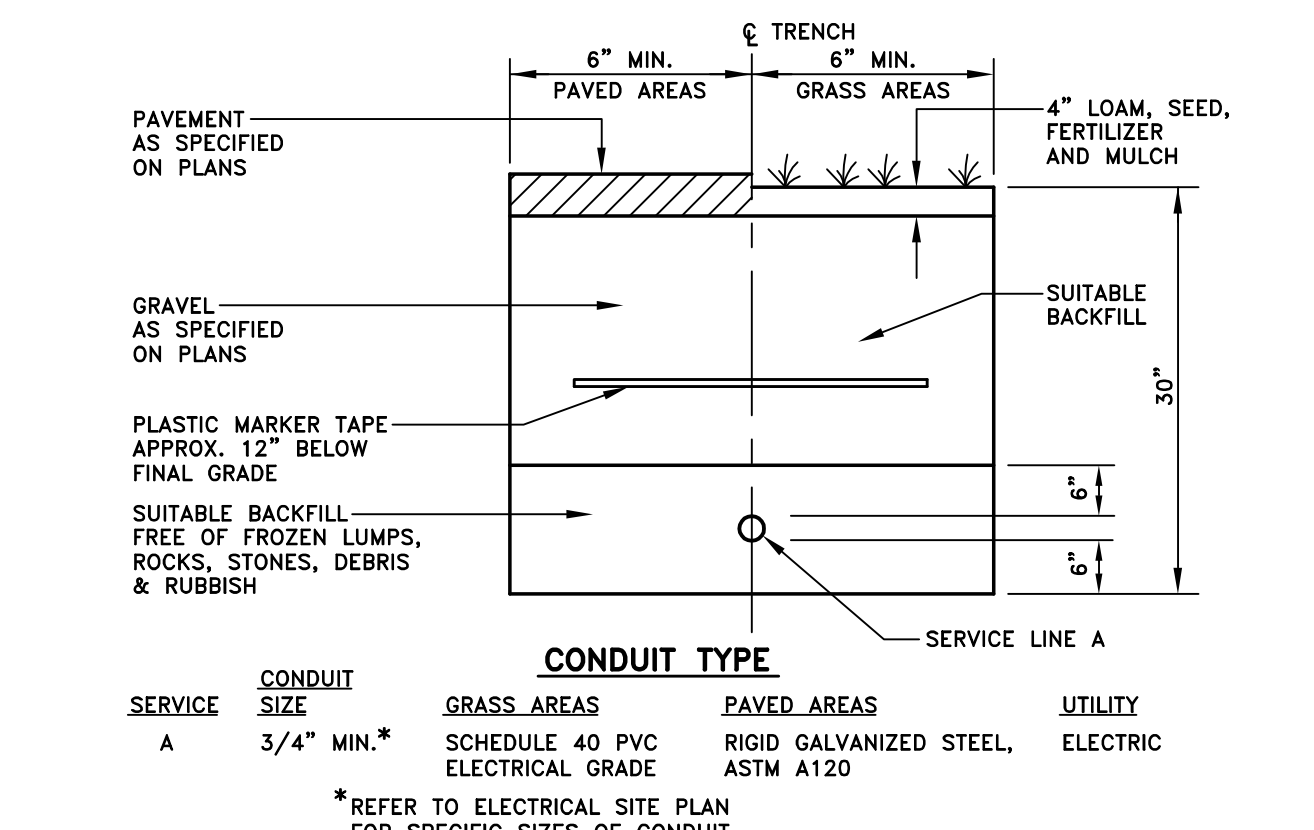


TYPICAL SITE LIGHTING POLE FOUNDATION (E) (C6)

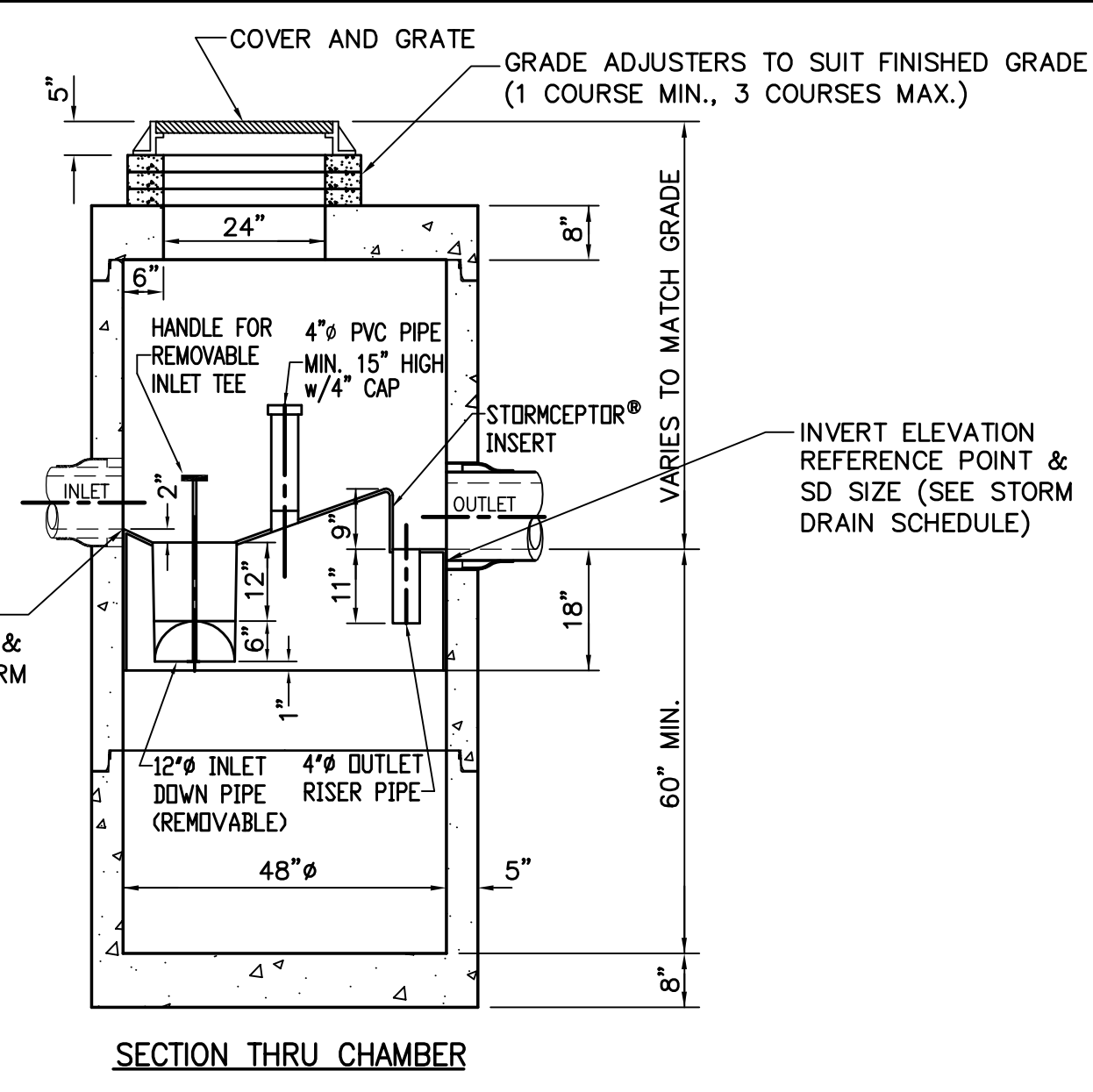


CONDUIT TYPE					
SERVICE	CONDUIT SIZE	GRASS AREAS	PAVED AREAS	UTILITY	REMARKS
A	2-5"	SCHEDULE 40 PVC ELECTRICAL GRADE	RIGID GALVANIZED STEEL, ASTM A120	POWER	SEE NOTE
B	2-4"	SCHEDULE 40 PVC	RIGID GALVANIZED STEEL, ASTM A120	TELEPHONE	SEE NOTE
C	1-4"	SCHEDULE 40 PVC	RIGID GALVANIZED STEEL, ASTM A120	CABLE	SEE NOTE

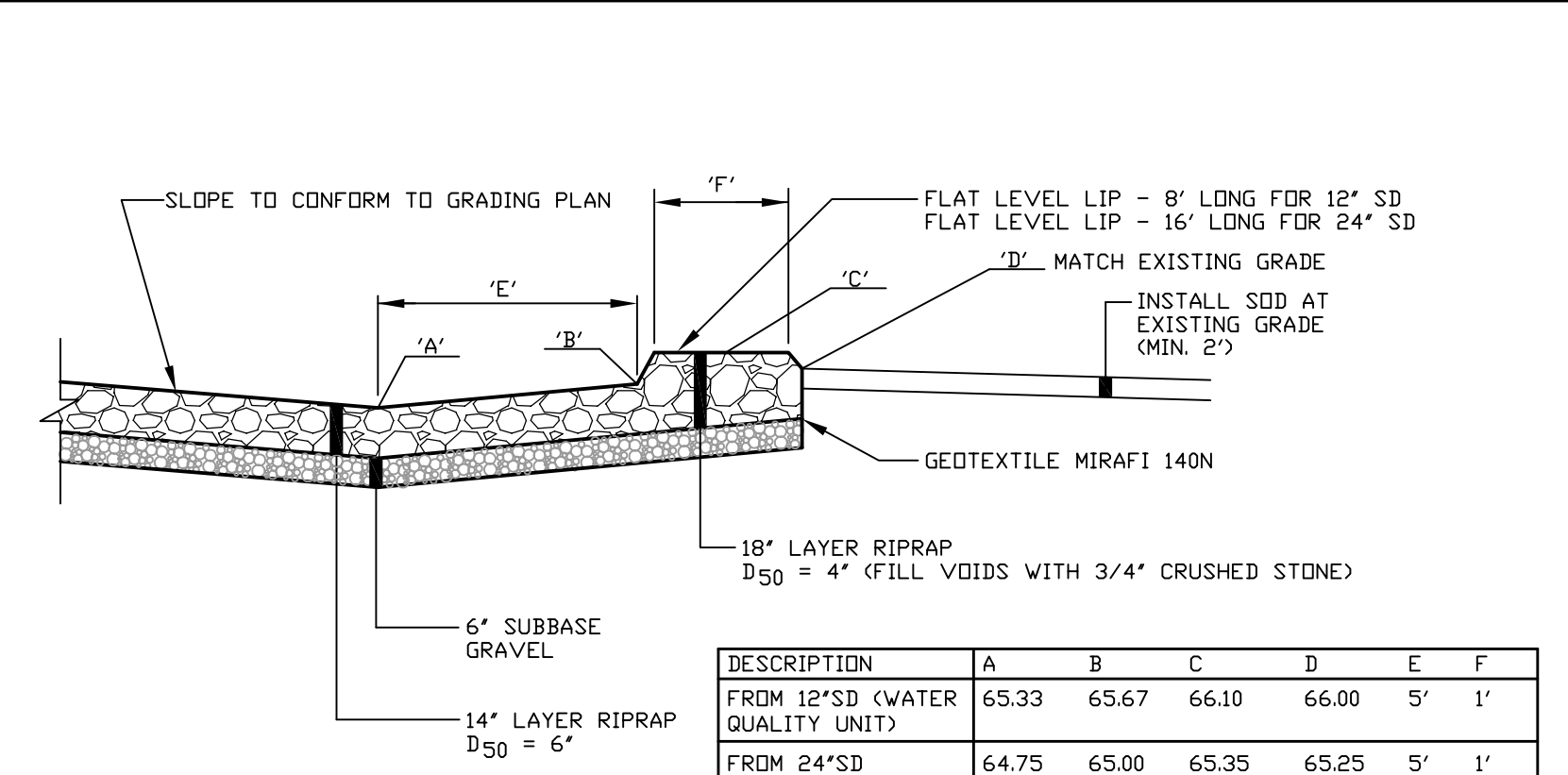
UTILITY TRENCH - PRIMARY POWER, TELEPHONE, AND CABLE (B) (C6)



UTILITY TRENCH - SECONDARY ELECTRIC (C) (C6)



SECTION THRU CHAMBER WATER QUALITY UNIT DETAIL (F) (C5)



DESCRIPTION	A	B	C	D	E	F
FROM 12" SD (WATER QUALITY UNIT)	65.33	65.67	66.10	66.00	5'	1'
FROM 24" SD	64.75	65.00	65.35	65.25	5'	1'

LEVEL LIP SPREADER DETAIL (J) (C5)

PINE TREE COUNCIL HEADQUARTERS PROJECT			DeLUCA-HOFFMAN ASSOCIATES, INC.	
SHEET TITLE			778 MAIN ST., SUITE 8 SO. PORTLAND, ME 04106 TEL. (207) 775-1121	
UTILITY DETAILS			DRAWN: CDD	
CLIENT			DESIGNED: DDA	
BOY SCOUTS OF AMERICA			DATE: MAY 2001	
REVISIONS			SCALE: AS SHOWN	
REV	DATE	DESCRIPTION	JOB NO. 1097	
7	03/08/04	REMOVED LIFT STATION AND PUMP DETAIL 'G'	SHEET C11	
6	02/10/04	ISSUED TO CHANGRO FOR PRICING		
5	09/05/01	REVISED PER CITY COMMENTS		
4	06/26/01	REVISED PER CITY COMMENTS & RESUBMITTED TO CITY AND M&DEP		
3	05/04/01	SUBMITTED TO CITY & TO M&DEP WITH TIER 2 NRPA APPLICATION		
2	02/19/99	SUBMITTED TO M&DEP WITH ALTERNATIVE ANALYSIS		
1	01/19/99	SUBMITTED TO BSA FOR REVIEW		
			P.E. DWIGHT D. ANDERSON	
			LIC. #9275	