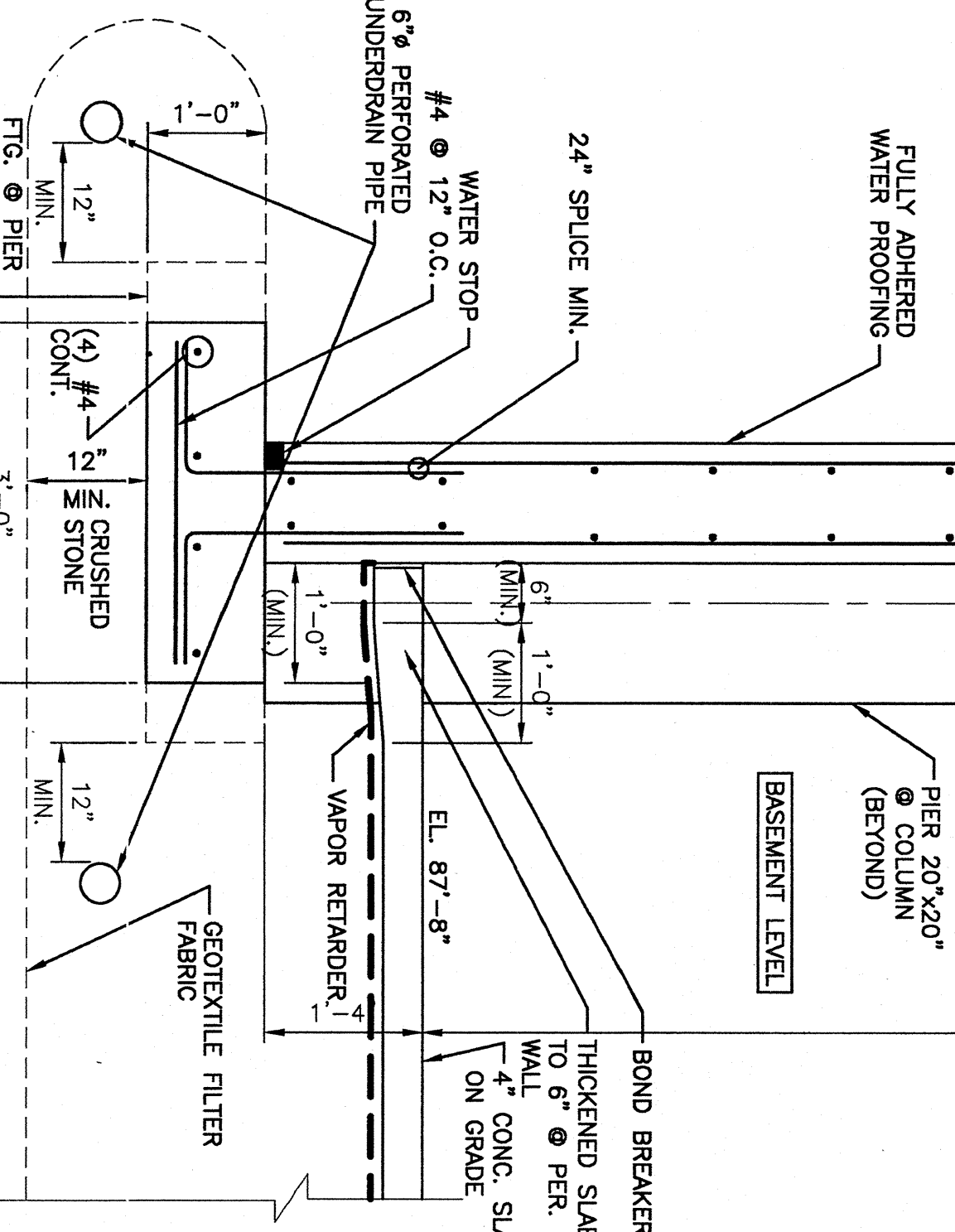
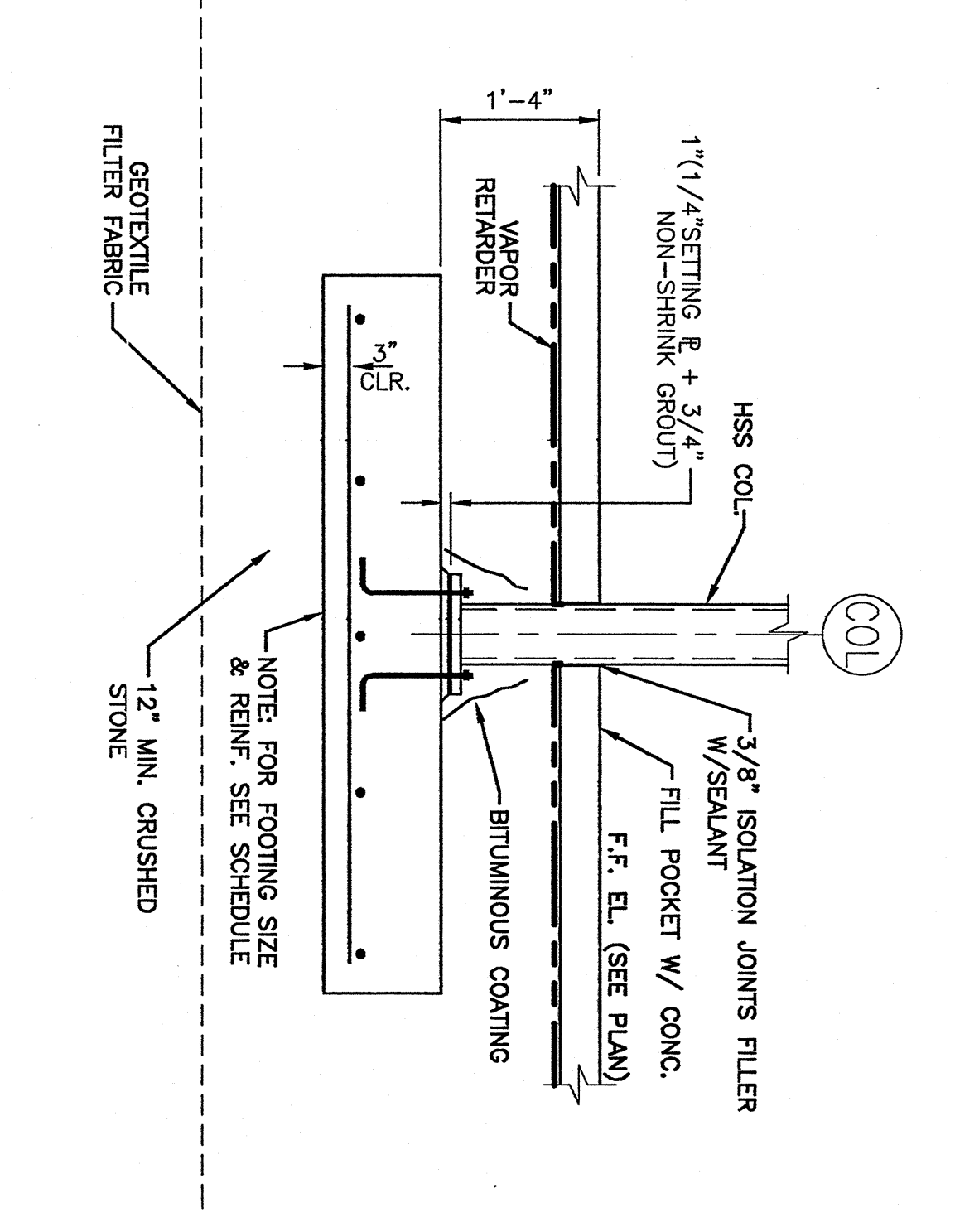
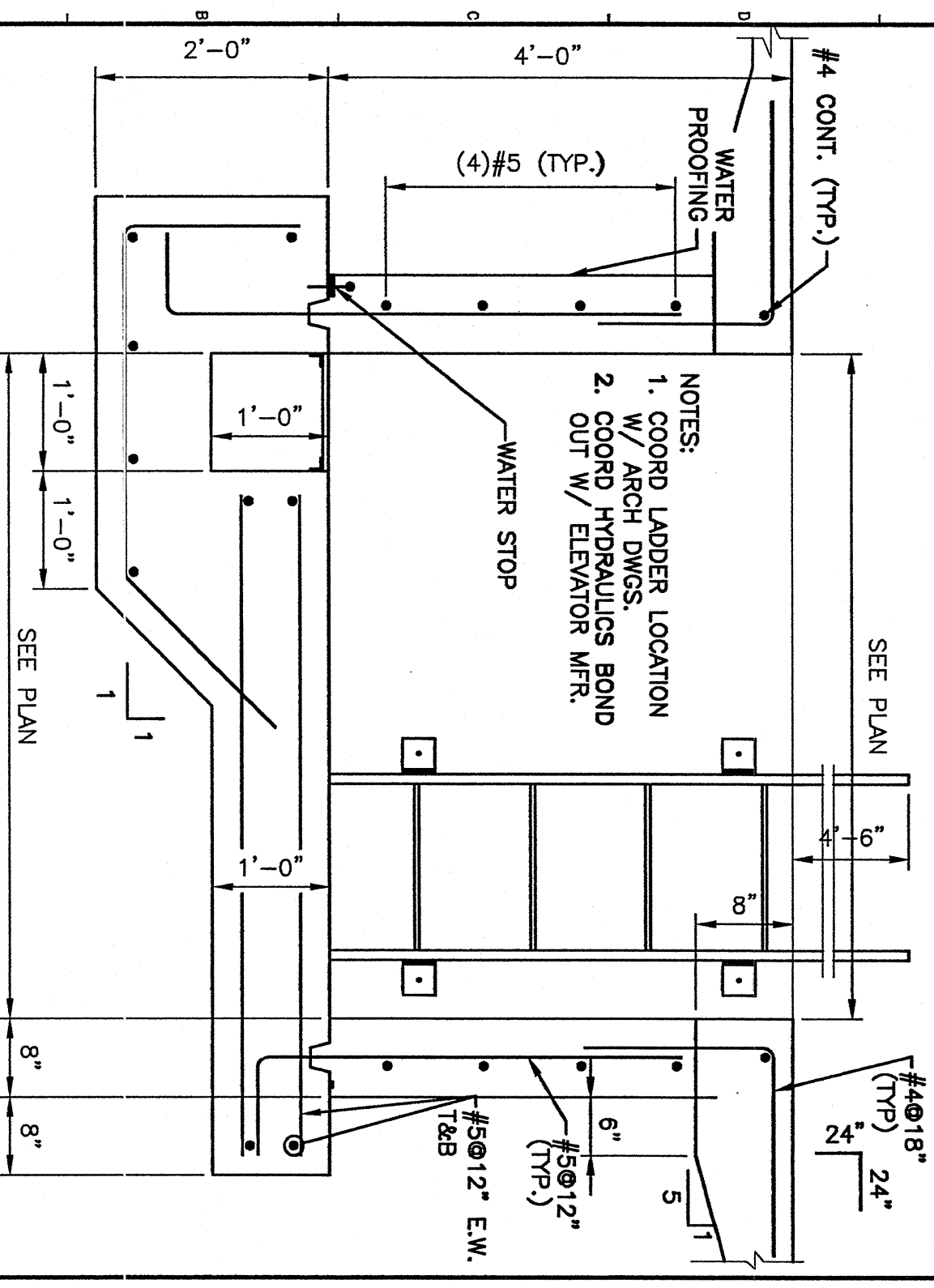


SYMBOL	SIZE	BOTTOM REINFORCING		TOP REINFORCING	
		LENGTH	WIDTH	LENGTH	WIDTH
F3.5	3'-6"x3'-6"x1'-0"	(3)#5	(3)#5		
F6.5	6'-6"x6'-6"x1'-0"	(6)#5	(6)#5		
F7	7'-0"x7'-0"x1'-2"	(8)#5	(8)#5		
F7.5	7'-6"x7'-6"x1'-2"	(9)#5	(9)#5		
F8.5	8'-6"x8'-6"x1'-2"	(10)#5	(10)#5		
F9	9'-0"x9'-0"x1'-6"	(12)#5	(12)#5		
F9.5	9'-6"x9'-6"x1'-6"	(12)#5	(12)#5		
F8.0x14.0	8'-0"x14'-0"x1'-2"	(10)#5	(16)#5	(10)#5	(16)#5

K1	-	K5	-	K9	SECTION AT DOOR	K14	FOOTING SCHEDULE
3/4"=1'-0"		3/4"=1'-0"		3/4"=1'-0"		NONE	

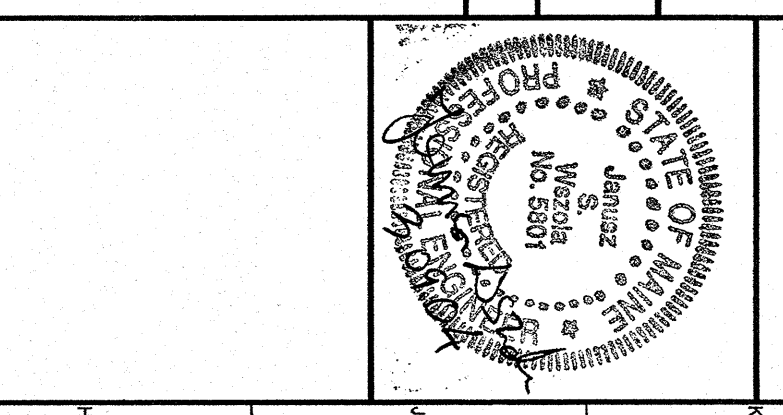
E1	-	E5	-	E9	-
3/4"=1'-0"		3/4"=1'-0"		3/4"=1'-0"	



A1	TYP. ELEVATOR SECTION	A5	TYP. INTERIOR FOOTING DETAIL	A9	-	A14	WALL SECTION
3/4"=1'-0"		3/4"=1'-0"		3/4"=1'-0"		3/4"=1'-0"	

PROJECT TITLE:	BOY SCOUTS OF AMERICA PINE TREE COUNCIL PORTLAND, ME.
CURRENT ISSUE STATUS:	ISSUED FOR PERMITTING 3-09-04
SCALE:	AS NOTED
PROJECT MANAGER:	JLH
DATE:	03/19/02
PROJECT NO.:	SB502-03152
SHEET NO.:	SB502

REV	DESCRIPTION	DATE



ARCHITECTURE ENGINEERING PLANNING
 SMART
 144 Fore Street/P.O. Box 618
 Portland, Maine 04104
 tel. (207) 772-3846
 fax. (207) 772-1070

