

PLUMBING SPECIFICATIONS

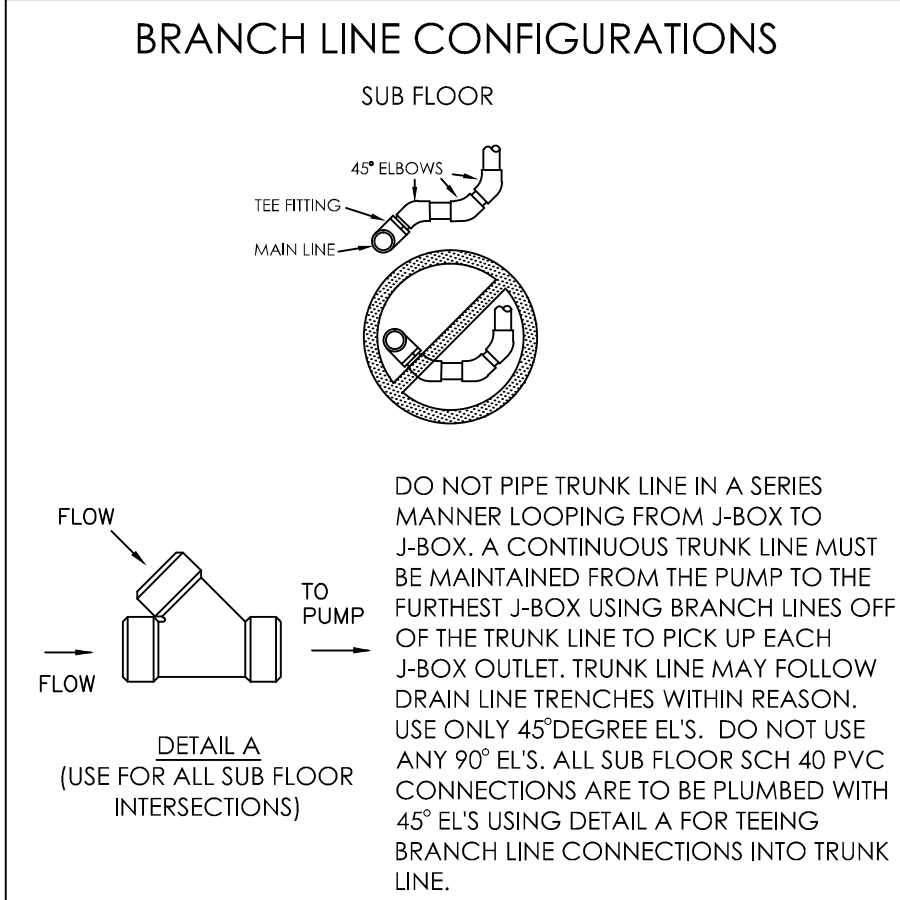
QUANTITY	SPEC. NUMBER	DESCRIPTION	UTILITIES								MECH. DETAIL	CONS. DETAIL		
			COLD WATER	HOT WATER	DRAIN	AIR	NATURAL GAS	VACUUM	N2	O2				
6	3A	UTILITY CENTER - SELF-CONTAINED WATER. CONTRACTOR TO PROVIDE REQ'D UTILITES. BACK FLOW PREVENTION REQUIRED AS PER LOCAL CODE.											3A	
12	11	MODULAR SINKS & FAUCETS - CONTRACTOR TO PROVIDE REQ'D UTILITES. SINK AND FAUCET SUPPLIED BY HENRY SCHEIN DENTAL. INSTALLED BY CONTRACTOR. FINAL CONNECTIONS BY CONTRACTOR.	•	•	•									
12	12B	TAP MASTER FAUCET CONTROL - FROM (12B) TO (11) OR (11A). SUPPLIED BY HENRY SCHEIN DENTAL. INSTALLED BY CONTRACTOR.											12B	
13	13	COMPRESSED AIR LINE AND VALVE - CONTRACTOR TO PROVIDE REQ'D UTILITES. TERMINATE WITH A 3/8" COMPRESSION STOP.											13	
2	15A	INSTRUMENT WASHER (HYDRIM) - CONTRACTOR TO PROVIDE REQ'D UTILITES. WASHER SUPPLIED AND INSTALLED BY HENRY SCHEIN DENTAL.	•	•	•								15A	
1	15B	HANDPIECE MAINTENANCE SYSTEM - CONTRACTOR TO PROVIDE REQ'D UTILITES. 1/2" AIR LINE WITH VALVE STOP (58-145 PSI) ABOVE COUNTERTOP. SYSTEM SUPPLIED AND INSTALLED BY HENRY SCHEIN DENTAL.											15B	
1	17	PLASTER TRAP - SUPPLIED BY HENRY SCHEIN DENTAL. INSTALLED BY CONTRACTOR ON SINK DRAIN LINE.											17	
1	25	DENTAL AIR COMPRESSOR - FOR GAS-DRIVEN DEVICES IN A LEVEL 3 FACILITY. CONTRACTOR TO PROVIDE REQ'D UTILITES AND FRESH-AIR INTAKE VENT. 1/2" I.D. COPPER TYPE K OR L SUPPLY LINES TO LOCATIONS THAT REQUIRE AIR. BUCK BOOST TRANSFORMER SUPPLIED AND INSTALLED BY CONTRACTOR (IF REQ'D). FINAL CONNECTIONS BY CONTRACTOR. REFER TO NFPA 99, 2005, 5.3.3.5 FOR REGULATIONS & REQUIREMENTS.											25	
1	27A	VACUUM PUMP (DRY) - CONTRACTOR TO PROVIDE REQ'D UTILITES. SCH 40 PVC MAIN TRUNK LINES (WHERE PERMITTED BY CODE). TRUNK, REDUCTION AND BRANCH LINE SIZES PER MFR RECOMMENDATIONS. EXHAUST PUMP TO OUTSIDE. BACK FLOW PREVENTION REQ'D PER LOCAL CODE. COLLECTION CANISTER (CAS) SUPPLIED BY HENRY SCHEIN DENTAL. INSTALLED BY CONTRACTOR. BUCK BOOST TRANSFORMER SUPPLIED AND INSTALLED BY CONTRACTOR (IF REQ'D). FINAL CONNECTIONS BY CONTRACTOR. PROVIDE WATER LINE WITH HOSE BIB NEAR UNIT.	•	•									27A	
1	30D	DISTILLED WATER FAUCET - DEDICATED FAUCET PIPED DOWNSTREAM FROM WATER DISTILLATION SYSTEM (30C). FAUCET SUPPLIED AND INSTALLED BY CONTRACTOR.												
1	30G	ULTRA PURE WATER SYSTEM (P&C VISTAPURE @ STERILIZATION) - SUPPLIED AND INSTALLED BY HENRY SCHEIN DENTAL.	•	•									30G	

PLUMBING NOTES

- THIS SPECIFICATION SHEET IS INTENDED AS A GUIDE FOR TRADESMEN. THE FLOOR PLANS ENCLOSED HEREIN ARE SUGGESTIONS FOR THE PLACEMENT OF DENTAL EQUIPMENT. THEY ARE NOT INTENDED FOR CONSTRUCTION.
- EXACT EQUIPMENT LOCATIONS MUST BE JOB SITE VERIFIED BY THE HENRY SCHEIN DENTAL EQUIPMENT SPECIALIST.
- FOLLOW MANUFACTURER'S DRAWINGS FOR EXACT REQUIREMENTS FOR ANY EQUIPMENT SUPPLIED BY HENRY SCHEIN DENTAL. CONSULT WITH HENRY SCHEIN DENTAL REP FOR ADDITIONAL INFORMATION.
- ANY REFERENCE TO "AIR", "COMPRESSED AIR" OR "AIR COMPRESSOR" REFER TO THE UNIT AND ALL COMPONENTS WHICH ARE CONSIDERED A LEVEL 3 "GAS-DRIVEN DEVICE" SUPPLY SYSTEM. REFER TO NFPA 99, 2005, 5.3.3.5 FOR REGULATIONS & REQUIREMENTS. THIS SHOULD NOT BE CONFUSED WITH "AIR" AS IT IS DEFINED IN LEVEL 1 OR LEVEL 2 MEDICAL FACILITIES.
- WATER PRESSURE MUST NOT EXCEED 50 PSI AT ALL DENTAL UNITS.
- BACK-FLOW PREVENTION IS REQUIRED ON ALL LINES AS PER LOCAL CODE.

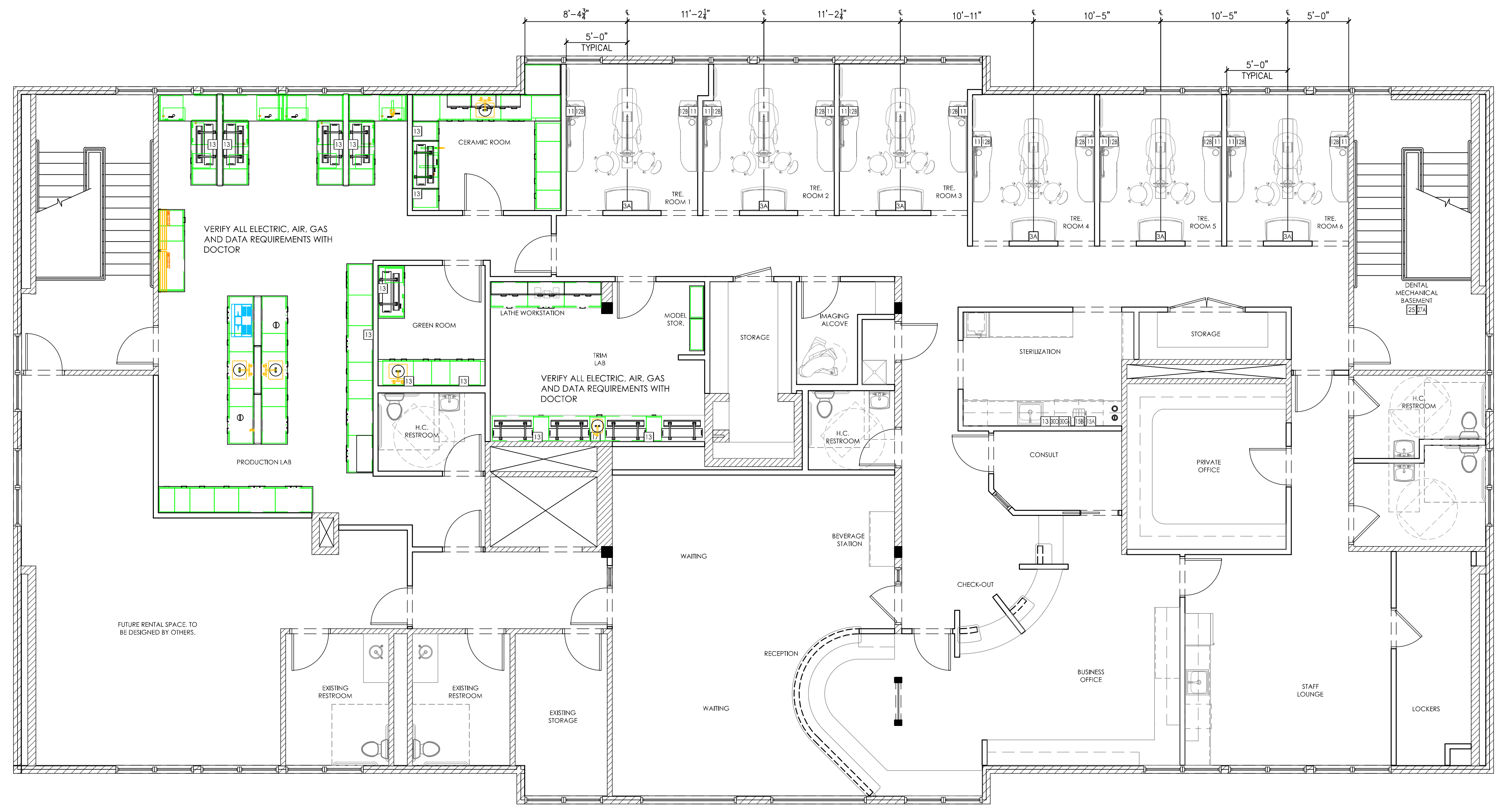
VACUUM NOTES

- THE VACUUM PIPING LAYOUT HAS A LARGE EFFECT ON THE EFFICIENCY AND RELIABILITY OF THE DENTAL VACUUM SYSTEM. REFER TO MANUFACTURER'S PRE-INSTALLATION GUIDE PROVIDED BY HENRY SCHEIN EQUIPMENT SPECIALIST (FOR SPECIFIC SIZING OF STUB-UP, TRUNK, AND BRANCH LINES).
- IT IS HIGHLY RECOMMENDED THAT VACUUM LINES RUN UNDERNEATH DENTAL EQUIPMENT BY MEANS OF TRENCHING/ CORING (CONCRETE SLAB) OR IN SUB FLOOR (BASEMENT/ CRAWL SPACE). ALL LINES ARE TO BE DESIGNED WITH PVC PIPING UNLESS DICTATED BY LOCAL CODES TO USE COPPER OR CAST IRON.
- TO ENSURE OPTIMUM VACUUM PERFORMANCE, INSTALL MAIN LINE DIRECTLY BELOW THE DENTAL CHAIR, CABINET OR WALL JUNCTION BOX TO REDUCE OR ELIMINATE BRANCH LINE RUNS WHEREVER POSSIBLE.
- 1. STUB-UP**
TERMINATE VACUUM TRUNK LINE IN MECHANICAL ROOM W/ VERTICAL STUB-UP 3" A.F.F. PLUMBING CONTRACTOR TO PROVIDE FPT ADAPTOR ON END OF STUB-UP. SIZE OF ADAPTOR TO BE DETERMINED BY TRUNK AND PUMP INTAKE PIPE SIZES. IN THE CASE OF DUAL TRUNK LINE SYSTEM, PROVIDE ENOUGH SPACE BETWEEN STUB-UPS TO INSTALL TEES ON BOTH LINES.
- 2. TRUNK LINE(S)**
VACUUM TRUNK LINE(S) TO BE SUPPORTED EVERY 6'-0" TO PREVENT SAG AND SLOPED A MINIMUM OF 1/4" PER 10'-0" TOWARD THE VACUUM PUMP.
- 3. BRANCH LINE(S)**
BRANCH LINES ARE TO BE "SWEEPING" 90 DEGREE TURNS TO AVOID VACUUM LOSS. A "Y" TEE FITTING SHOULD BE USED WHEN AVAILABLE TO BRANCH TWO LINES TOGETHER.



SPECIAL NOTE:
IF VACUUM LINES ENCRUSH ON EITHER A WALL OR COLUMN FOOTING, USE 45 DEGREE ELBOWS TO PIPE AROUND FOOTING SO PIPE REACHES PROPER LOCATION.

SEE SHEET SPE.1 FOR ILLUSTRATIONS & DETAILS



PROPOSED DENTAL PLUMBING SPECIFICATIONS

3/16"=1'-0"

HENRY SCHEIN®
DENTAL
10920 WEST LINCOLN AVENUE
WEST ALLIS, WI 53227

PROJECT:
PROSTHODONTIC ASSOCIATES
LOCATION:
131 JOHNSON ROAD
PORTLAND, ME 04102

HENRY SCHEIN REP:
JESSE LEVEILLE
CENTER:
BOSTON, MA
PHONE #:
(207) 233-4978

-IMPORTANT NOTE-
THIS DOCUMENT HAS BEEN PREPARED AS AN INSTRUMENT OF PROFESSIONAL SERVICE, AND IS NOT AN ARCHITECTURAL PLAN. THE IDEAS/ DESIGNS INCLUDED HEREIN ARE THE SOLE PROPERTY OF HENRY SCHEIN DENTAL AND ARE PROTECTED UNDER COPYRIGHT. THEY MAY NOT BE USED OR REPRODUCED WITHOUT EXPRESSED WRITTEN CONSENT OF HENRY SCHEIN AND FULL PAYMENT OF ANY ASSOCIATED DESIGN FEES.
ALL DIMENSIONS ARE SUBJECT TO JOB-SITE VERIFICATION.

DRAWING NAME:
PROSTHO-3d-F1
PROJECT START DATE:
06/06/2013
FINALS START DATE:
08/15/2014
DRAWN BY: AKL/CAS
FINALS BY: AKL
CHECKED BY: KS

REVISIONS:	DATE	BY
08/22/14	AKL	
10/22/14	AKL	
---	---	---
---	---	---
---	---	---
---	---	---
INT.SQ.FT.=	5167	

SCALE: 3/16"=1'-0"
SHT. SIZE: D
PLUMBING PLAN
SP.1