

ELECTRICAL SPECIFICATIONS

QUANTITY	SPEC. NUMBER	DESCRIPTION	UTILITIES			
			ELECTRICAL (SEE DETAILS FOR REQUIREMENTS)	VOLTAGE & AMPS	DEDICATED CIRCUIT	MECHANICAL DETAIL
		PLEASE NOTE: ALL REQUIREMENTS TO BE VERIFIED BY MANUFACTURER'S SPEC SHEETS PROVIDED BY HENRY SCHEIN DENTAL EQUIPMENT SPECIALIST. MANUFACTURER'S SPECS SUPERSEDE ANY AND ALL INFORMATION CONTAINED HEREIN.				
6	5	DENTAL CHAIR RECEPTACLE - SUPPLIED & INSTALLED BY CONTRACTOR. EXACT LOCATION TO BE SPOTTED BY HENRY SCHEIN DENTAL EQUIPMENT SPECIALIST.	•	115V, 20A		5
1	9B	X-RAY REMOTE EXPOSURE BUTTON - CONTRACTOR TO SUPPLY AND INSTALL PIPE CHASE WITH PULL-STRING TO (9A) OR (9C) LOCATION. VERIFY SUPPLIER OF EXPOSURE BUTTON AND WIRING WITH HENRY SCHEIN EQUIPMENT SPECIALIST. FINAL CONNECTION BY HENRY SCHEIN DENTAL.	•			9B
1	9C	PANORAMIC UNIT - CONTRACTOR TO PROVIDE REQ'D UTILITIES. REQUIRES A 3 WIRE GROUNDED CIRCUIT. X-RAY UNIT SUPPLIED AND INSTALLED BY HENRY SCHEIN DENTAL.	•	115V & 230V, 20A		9C
19	10	OFFICE COMMUNICATION SYSTEM - SYSTEM AND WIRING SUPPLIED BY HENRY SCHEIN DENTAL INSTALLED BY CONTRACTOR. SEE OWNER AND HENRY SCHEIN DENTAL EQUIPMENT SPECIALIST FOR EXACT LOCATIONS.	•			10
1	10A	OFFICE COMM. SYSTEM POWER SUPPLY - CONTRACTOR TO PROVIDE REQ'D UTILITIES. SEE OWNER AND HENRY SCHEIN DENTAL EQUIPMENT SPECIALIST FOR EXACT LOCATION.	•	115V, 15A		
2	14A	STERILIZER (AUTO-CLAVE) - CONTRACTOR TO PROVIDE REQ'D UTILITIES. STERILIZER SUPPLIED AND INSTALLED BY HENRY SCHEIN DENTAL. VERIFY IF SWITCHED OUTLET IS REQ'D.	•	115V, 15A		14A
2	15A	INSTRUMENT WASHER (HYDRIM) - CONTRACTOR TO PROVIDE REQ'D UTILITIES. WASHER SUPPLIED AND INSTALLED BY HENRY SCHEIN DENTAL.	•	208-240V, 15A		15A

ELECTRICAL SPECIFICATIONS

QUANTITY	SPEC. NUMBER	DESCRIPTION	UTILITIES			
			ELECTRICAL (SEE DETAILS FOR REQUIREMENTS)	VOLTAGE & AMPS	DEDICATED CIRCUIT	MECHANICAL DETAIL
1	16	MODEL TRIMMER - CONTRACTOR TO PROVIDE REQ'D UTILITIES. MODEL TRIMMER SUPPLIED AND INSTALLED BY HENRY SCHEIN DENTAL. BACK FLOW PREVENTION REQUIRED PER CODE.	•	115V, 15A		16
1	32B	REMOTE PANEL (AIR & VAC) - SUPPLIED BY HENRY SCHEIN DENTAL. INSTALLED BY CONTRACTOR 60' A.F.F. CONTRACTOR TO SUPPLY AND INSTALL 24V CONTROL WIRING PER MFR SPECS.	•			32B
1	33	N2O-O2 SYSTEM MANIFOLD - CONTRACTOR TO PROVIDE REQ'D UTILITIES. MANIFOLD SUPPLIED BY HENRY SCHEIN DENTAL. INSTALLED BY CONTRACTOR. SILVER SOLDERED K OR L COPPER TRUNK LINES RUNNING TO EACH TREATMENT ROOM. CONTRACTOR TO PRESSURE TEST LINES SEPARATELY WITH DRY NITROGEN AT 150 PSI FOR 24 HOURS. FOLLOW NFPA CODES.	•	115V, 20A		33
1	34	N2O-O2 SYSTEM ALARM - CONTRACTOR TO PROVIDE REQ'D UTILITIES. ALARM SUPPLIED BY HENRY SCHEIN DENTAL. INSTALLED BY CONTRACTOR.	•	24V		34
3	42	TASK LIGHTING - CONTRACTOR TO PROVIDE REQ'D UTILITIES. LIGHTS SUPPLIED BY HENRY SCHEIN DENTAL. INSTALLED BY CONTRACTOR.	•	115V, AMPS VARY		

ELECTRICAL NOTES

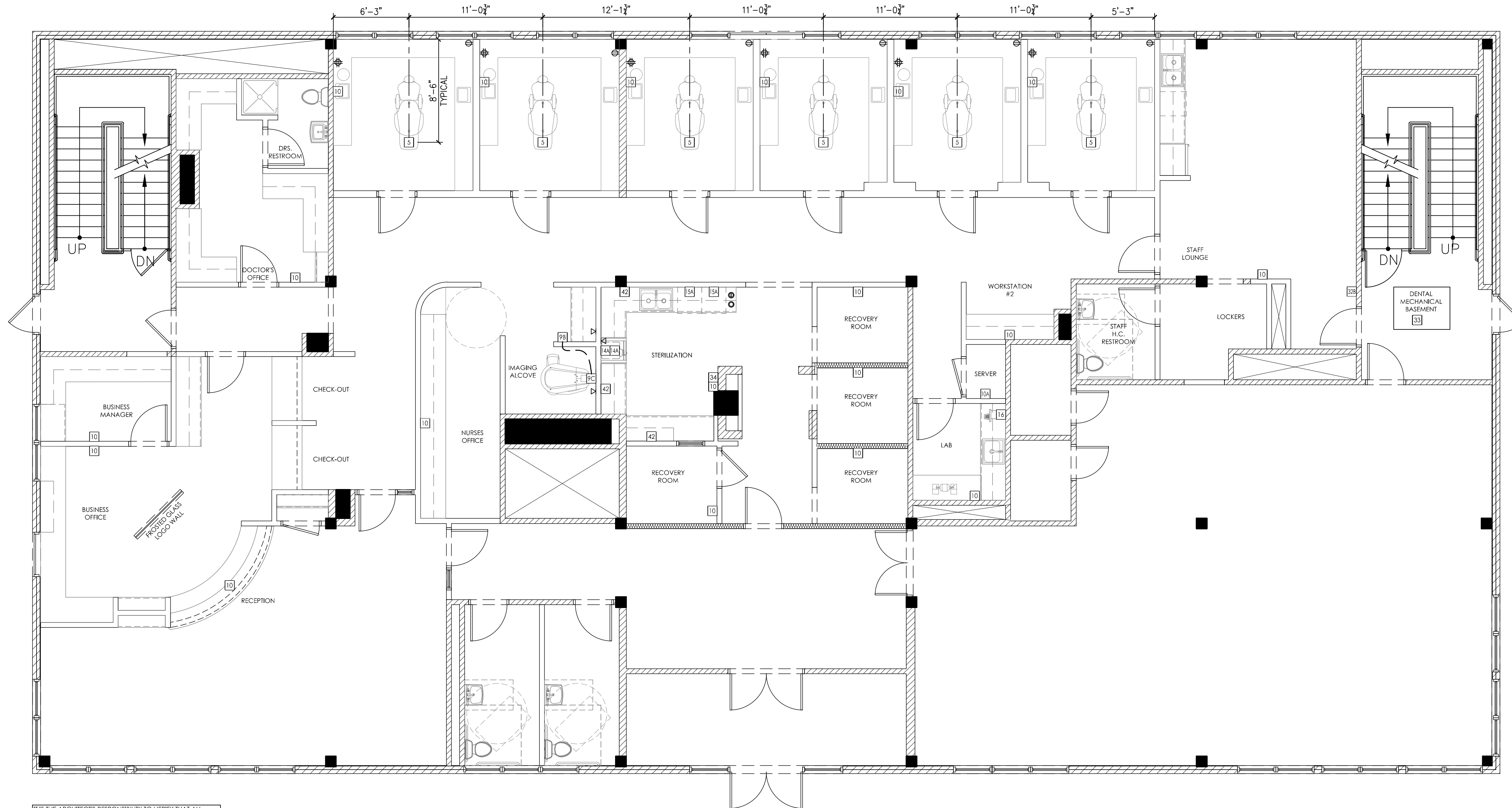
- THIS SPECIFICATION SHEET IS INTENDED AS A GUIDE FOR TRADESMEN. THE FLOOR PLANS ENCLOSED HEREIN ARE SUGGESTIONS FOR THE PLACEMENT OF DENTAL EQUIPMENT. THEY ARE NOT INTENDED FOR CONSTRUCTION.
- EXACT EQUIPMENT LOCATIONS MUST BE JOB SITE VERIFIED BY THE HENRY SCHEIN DENTAL EQUIPMENT SPECIALIST.
- FOLLOW MANUFACTURER'S DRAWINGS FOR EXACT REQUIREMENTS FOR ANY EQUIPMENT SUPPLIED BY HENRY SCHEIN DENTAL. CONSULT WITH HENRY SCHEIN DENTAL REP FOR ADDITIONAL INFORMATION.
- GFCI PROTECTION OR REDUNDANT GROUND IN DENTAL CHAIR RECEPTACLES, DENTAL UTILITY CABINETS AND ANY OTHER AREAS REQUIRED BY LOCAL CODE IS THE RESPONSIBILITY OF THE ELECTRICAL CONTRACTOR.
- ADDITIONAL CONVENIENCE OUTLETS REQUIRED ON JOBSITE ARE THE RESPONSIBILITY OF ELECTRICAL CONTRACTORS. FOLLOW LOCAL CODE RESTRICTIONS.
- ALL COMPUTER NETWORKING AND WORKSTATIONS MUST BE SPECIFIED BY CUSTOMER'S COMPUTER SUPPLIER. IF HENRY SCHEIN WILL BE SUPPLYING THE COMPUTER NETWORKING SYSTEM, SEE SHEET SE.2 FOR THE OFFICE AUTOMATION PLAN.

ELECTRICAL LEGEND

ALL HEIGHTS TO BE SPECIFIED ON-SITE UNLESS NOTED OTHERWISE

- ⊕ DUPLEX RECEPTACLE
- ⊕ QUAD RECEPTACLE
- ▽ DATA DROP/OUTLET

SEE SHEETS SPE.1 & SPE.2 FOR ILLUSTRATIONS & DETAILS



IT IS THE ARCHITECT'S RESPONSIBILITY TO VERIFY THAT ALL CODE RESTRICTIONS & CLEARANCES ARE MET.

PROPOSED DENTAL ELECTRICAL SPECIFICATIONS

3/16"=1'-0"

HENRY SCHEIN
DENTAL
10920 WEST LINCOLN AVENUE
WEST ALLIS, WI 53227

PROJECT:
SOUTHERN MAINE ORAL SURGERY
LOCATION:
131 JOHNSON ROAD
PORTLAND, ME 04102

HENRY SCHEIN REP:
JESSE LEVIELLE
CENTER:
BOSTON, MA
PHONE #:
(207) 233-4978

-IMPORTANT NOTE-
THIS DOCUMENT HAS BEEN PREPARED AS AN INSTRUMENT OF PROFESSIONAL SERVICE, AND IS NOT AN ARCHITECTURAL PLAN. IDEAS/ DESIGNS INCLUDED HEREIN ARE THE SOLE PROPERTY OF HENRY SCHEIN DENTAL AND ARE PROTECTED UNDER COPYRIGHT. THEY MAY NOT BE USED OR REPRODUCED WITHOUT EXPRESSED WRITTEN CONSENT OF HENRY SCHEIN AND FULL PAYMENT OF ANY ASSOCIATED DESIGN FEES.
ALL DIMENSIONS ARE SUBJECT TO JOB-SITE VERIFICATION.

DRAWING NAME:
SMOS-1c-F
PROJECT START DATE:
08/11/2014
FINALS START DATE:
08/20/2014
DRAWN BY: AKL
FINALS BY: AKL
CHECKED BY: TJK

REVISIONS:
10/24/14 AKL

INT.SQ.FT.= 3992

SCALE: SHT. SIZE:
3/16"=1'-0" D
ELECTRICAL PLAN

SE.1