

## PLUMBING SPECIFICATIONS

QUANTITY	SPEC. NUMBER	DESCRIPTION	UTILITIES							MECH. DETAIL	CONS. DETAIL
			COLD WATER	HOT WATER	AIR DRAIN	NATURAL GAS	VACUUM	N2O	OXYGEN		
		PLEASE NOTE: ALL REQUIREMENTS TO BE VERIFIED BY MANUFACTURER'S SPEC SHEETS PROVIDED BY HENRY SCHEIN DENTAL EQUIPMENT SPECIALIST. MANUFACTURER'S SPECS SUPERSEDE ANY AND ALL INFORMATION CONTAINED HEREIN.									
6	7	N2O, O2 AND VACUUM OUTLET STATION - CONTRACTOR (MED GAS CERTIFIED WHERE REQUIRED BY CODE) TO PROVIDE REQ'D UTILITIES. OUTLET STATION PROVIDED BY HENRY SCHEIN DENTAL, INSTALLED BY CONTRACTOR (WHEN REQUIRED). SILVER SOLDERED TO TYPE K OR L COPPER LINES, 3/8" OD NITROUS AND 1/2" OD OXYGEN COMING FROM THE SYSTEM MANIFOLD. 1/2" O.D. VACUUM BRANCH FROM MAIN VACUUM TRUNK LINE. SEE HENRY SCHEIN DENTAL EQUIPMENT SPECIALIST FOR EXACT LOCATIONS. FOLLOW NFPA CODES.									7
4	7A	OXYGEN OUTLET - CONTRACTOR (MED GAS CERTIFIED WHERE REQUIRED BY CODE) TO PROVIDE REQ'D UTILITIES. OUTLET SUPPLIED BY HENRY SCHEIN DENTAL, INSTALLED BY CONTRACTOR. SILVER SOLDERED TO 1/2" O.D. TYPE K OR L COPPER LINES COMING FROM THE SYSTEM MANIFOLD. SEE HENRY SCHEIN DENTAL EQUIPMENT SPECIALIST FOR EXACT LOCATIONS. FOLLOW NFPA CODES.									7A
6	7B	NITROGEN OUTLET - CONTRACTOR TO PROVIDE REQ'D UTILITIES. OUTLET SUPPLIED BY HENRY SCHEIN DENTAL, INSTALLED BY CONTRACTOR. SILVER SOLDERED TO 3/8" O.D. TYPE K OR L COPPER LINES COMING FROM THE SYSTEM MANIFOLD. SEE HENRY SCHEIN DENTAL EQUIPMENT SPECIALIST FOR EXACT LOCATIONS. FOLLOW NFPA CODES.									7B
12	11	MODULAR SINKS & FAUCETS - CONTRACTOR TO PROVIDE REQ'D UTILITIES. SINK AND FAUCET SUPPLIED BY HENRY SCHEIN DENTAL, INSTALLED BY CONTRACTOR. FINAL CONNECTIONS BY CONTRACTOR.									
12	12B	TAP MASTER FAUCET CONTROL - FROM (12B) TO (11) OR (11A). SUPPLIED BY HENRY SCHEIN DENTAL, INSTALLED BY CONTRACTOR.									12B
2	13	COMPRESSED AIR LINE AND VALVE - CONTRACTOR TO PROVIDE REQ'D UTILITIES. TERMINATE WITH A 3/8" COMPRESSION STOP.									13
2	15A	INSTRUMENT WASHER (HYDRIM) - CONTRACTOR TO PROVIDE REQ'D UTILITIES. WASHER SUPPLIED AND INSTALLED BY HENRY SCHEIN DENTAL.									15A
1	16	MODEL TRIMMER - CONTRACTOR TO PROVIDE REQ'D UTILITIES. MODEL TRIMMER SUPPLIED AND INSTALLED BY HENRY SCHEIN DENTAL. BACK FLOW PREVENTION REQUIRED PER CODE.									16

## PLUMBING SPECIFICATIONS

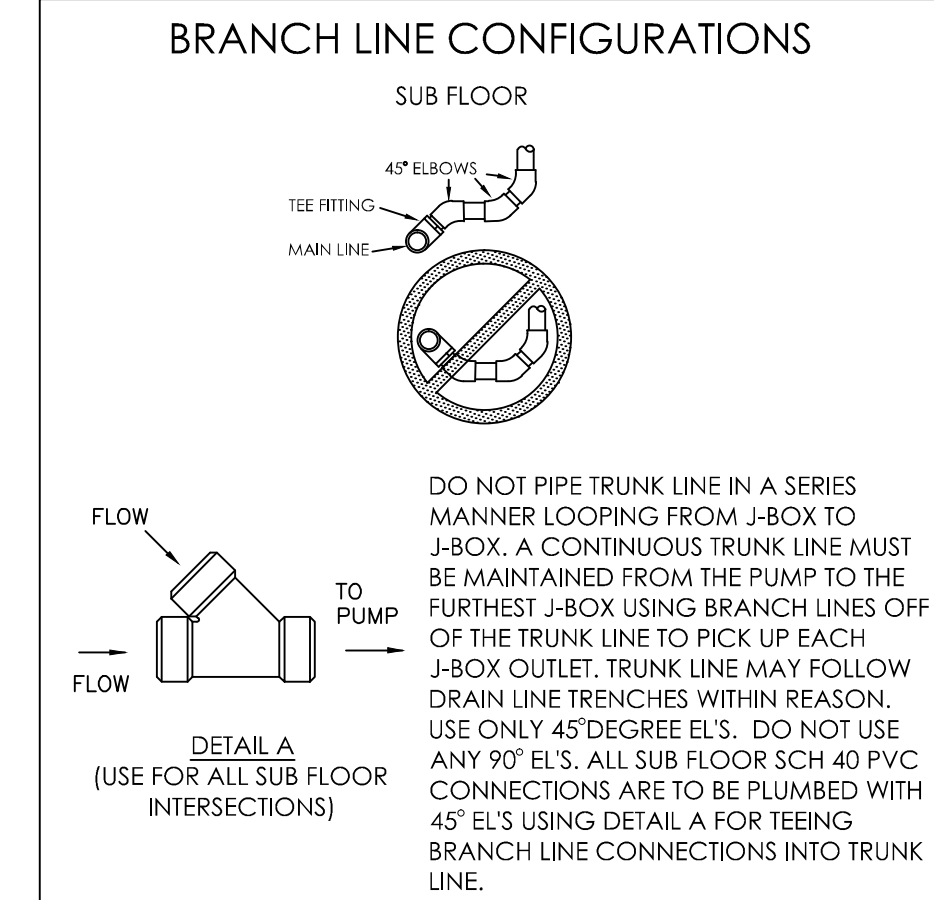
QUANTITY	SPEC. NUMBER	DESCRIPTION	UTILITIES							MECH. DETAIL	CONS. DETAIL
			COLD WATER	HOT WATER	AIR DRAIN	NATURAL GAS	VACUUM	N2O	OXYGEN		
1	17	PLASTER TRAP - SUPPLIED BY HENRY SCHEIN DENTAL, INSTALLED BY CONTRACTOR ON SINK DRAIN LINE.									16
10	28	VACUUM INLET - CONTRACTOR TO PROVIDE A 1/2" PVC BRANCH WITH TERMINATION FITTING FROM MAIN TRUNK LINE. VERIFY HEIGHT AND LOCATION WITH HENRY SCHEIN DENTAL EQUIPMENT SPECIALIST.									28
1	30G	ULTRA PURE WATER SYSTEM (P&C VISTAPURE® STERILIZATION) - SUPPLIED AND INSTALLED BY HENRY SCHEIN DENTAL.									30G
1	33	N2O-O2 SYSTEM MANIFOLD - CONTRACTOR TO PROVIDE REQ'D UTILITIES. MANIFOLD SUPPLIED BY HENRY SCHEIN DENTAL, INSTALLED BY CONTRACTOR. SILVER SOLDERED K OR L COPPER TRUNK LINES RUNNING TO EACH TREATMENT ROOM. CONTRACTOR TO PRESSURE TEST LINES SEPARATELY WITH DRY NITROGEN AT 150 PSI FOR 24 HOURS. FOLLOW NFPA CODES.									33
1	33A	NITROGEN MANIFOLD SYSTEM - CONTRACTOR TO PROVIDE REQ'D UTILITIES. RUN K OR L COPPER LINES TO ALL TREATMENT ROOM LOCATIONS REQUIRING AIR. MANIFOLD SUPPLIED BY HENRY SCHEIN DENTAL, INSTALLED BY CONTRACTOR.									33A
1	34A	N2O-O2 ZONE SHUT-OFF VALVES - SUPPLIED BY HENRY SCHEIN DENTAL, INSTALLED BY CONTRACTOR. SILVER SOLDERED K OR L COPPER INSTALLED ON TRUNK LINES BETWEEN MANIFOLD AND TREATMENT ROOMS. CONTRACTOR TO PRESSURE TEST LINES SEPARATELY WITH DRY NITROGEN AT 150 PSI FOR 24 HOURS. FOLLOW NFPA CODES.									34A

## PLUMBING NOTES

- THIS SPECIFICATION SHEET IS INTENDED AS A GUIDE FOR TRADESMEN. THE FLOOR PLANS ENCLOSED HEREIN ARE SUGGESTIONS FOR THE PLACEMENT OF DENTAL EQUIPMENT. THEY ARE NOT INTENDED FOR CONSTRUCTION.
- EXACT EQUIPMENT LOCATIONS MUST BE JOB SITE VERIFIED BY THE HENRY SCHEIN DENTAL EQUIPMENT SPECIALIST.
- FOLLOW MANUFACTURER'S DRAWINGS FOR EXACT REQUIREMENTS FOR ANY EQUIPMENT SUPPLIED BY HENRY SCHEIN DENTAL. CONSULT WITH HENRY SCHEIN DENTAL REP FOR ADDITIONAL INFORMATION.
- ANY REFERENCE TO "AIR", "COMPRESSED AIR" OR "AIR COMPRESSOR" REFER TO THE UNIT AND ALL COMPONENTS WHICH ARE CONSIDERED A LEVEL 3 "GAS-DRIVEN DEVICE" SUPPLY SYSTEM. REFER TO NFPA 99, 2005, 5.3.3.5 FOR REGULATIONS & REQUIREMENTS. THIS SHOULD NOT BE CONFUSED WITH "AIR" AS IT IS DEFINED IN LEVEL 1 OR LEVEL 2 MEDICAL FACILITIES.
- WATER PRESSURE MUST NOT EXCEED 50 PSI AT ALL DENTAL UNITS.
- BACK-FLOW PREVENTION IS REQUIRED ON ALL LINES AS PER LOCAL CODE.

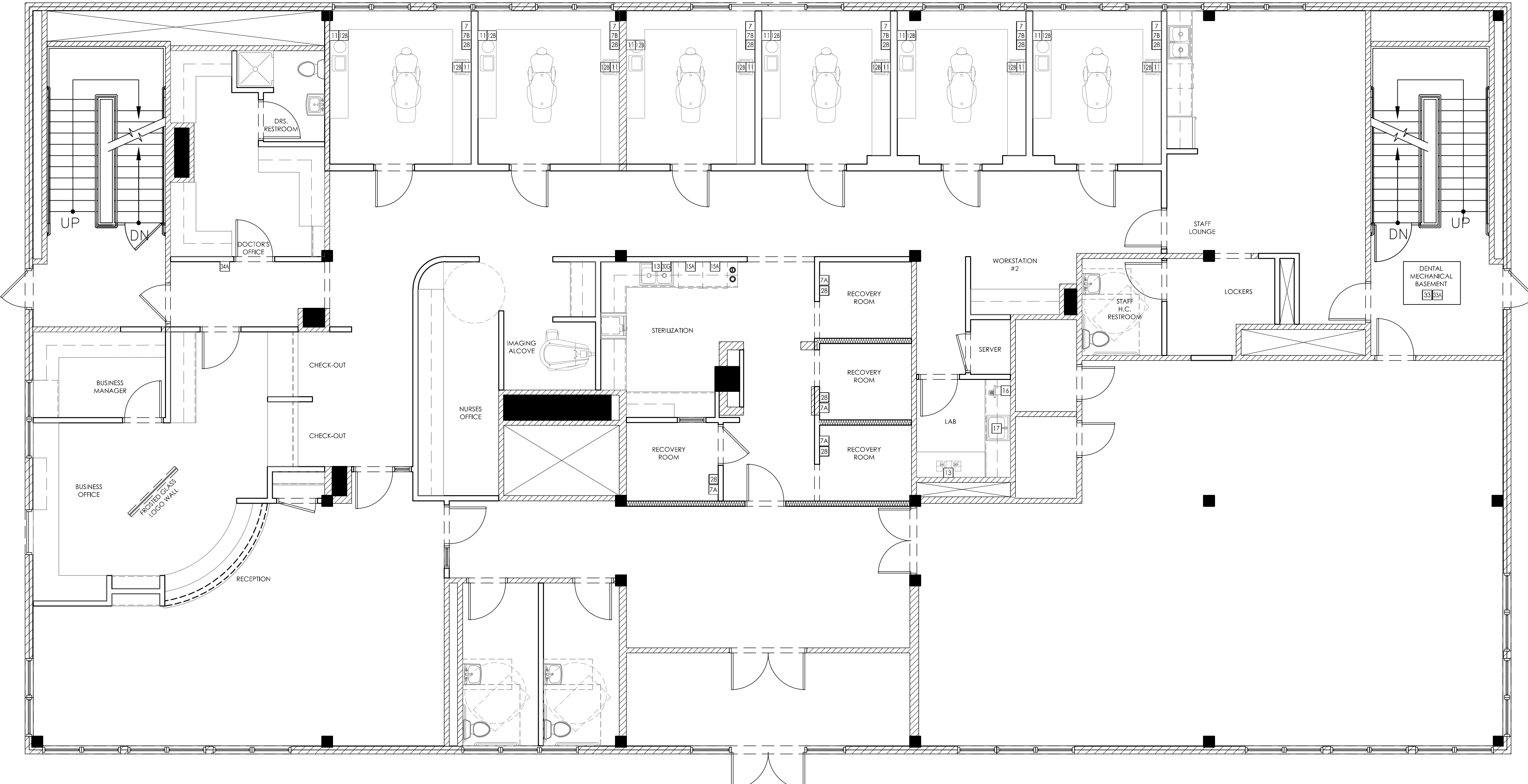
## VACUUM NOTES

- THE VACUUM PIPING LAYOUT HAS A LARGE EFFECT ON THE EFFICIENCY AND RELIABILITY OF THE DENTAL VACUUM SYSTEM. REFER TO MANUFACTURER'S PRE-INSTALLATION GUIDE PROVIDED BY HENRY SCHEIN EQUIPMENT SPECIALIST (FOR SPECIFIC SIZING OF STUB-UP, TRUNK, AND BRANCH LINES).
- IT IS HIGHLY RECOMMENDED THAT VACUUM LINES RUN UNDERNEATH DENTAL EQUIPMENT BY MEANS OF TRENCHING/ CORING (CONCRETE SLAB) OR IN SUB FLOOR (BASEMENT/ CRAWL SPACE). ALL LINES ARE TO BE DESIGNED WITH PVC PIPING UNLESS DICTATED BY LOCAL CODES TO USE COPPER OR CAST IRON.
- TO ENSURE OPTIMUM VACUUM PERFORMANCE, INSTALL MAIN LINE DIRECTLY BELOW THE DENTAL CHAIR, CABINET OR WALL JUNCTION BOX TO REDUCE OR ELIMINATE BRANCH LINE RUNS WHEREVER POSSIBLE.
- 1. STUB-UP**  
TERMINATE VACUUM TRUNK LINE IN MECHANICAL ROOM W/ VERTICAL STUB-UP 3" A.F.F. PLUMBING CONTRACTOR TO PROVIDE FPT ADAPTOR ON END OF STUB-UP. SIZE OF ADAPTOR TO BE DETERMINED BY TRUNK AND PUMP INTAKE PIPE SIZES. IN THE CASE OF DUAL TRUNK LINE SYSTEM, PROVIDE ENOUGH SPACE BETWEEN STUB-UPS TO INSTALL TEES ON BOTH LINES.
- 2. TRUNK LINE(S)**  
VACUUM TRUNK LINE(S) TO BE SUPPORTED EVERY 6'-0" TO PREVENT SAG AND SLOPED A MINIMUM OF 1/4" PER 10'-0" TOWARD THE VACUUM PUMP.
- 3. BRANCH LINE(S)**  
BRANCH LINES ARE TO BE "SWEEPING" 90 DEGREE TURNS TO AVOID VACUUM LOSS. A "Y" TEE FITTING SHOULD BE USED WHEN AVAILABLE TO BRANCH TWO LINES TOGETHER.



SPECIAL NOTE:  
IF VACUUM LINES ENCRONCH ON EITHER A WALL OR COLUMN FOOTING, USE 45 DEGREE ELBOWS TO PIPE AROUND FOOTING SO PIPE REACHES PROPER LOCATION.

SEE SHEETS SPE.1 & SPE.2 FOR ILLUSTRATIONS & DETAILS



IT IS THE ARCHITECT'S RESPONSIBILITY TO VERIFY THAT ALL CODE RESTRICTIONS & CLEARANCES ARE MET.

## PROPOSED DENTAL PLUMBING SPECIFICATIONS

3/16"=1'-0"

**HENRY SCHEIN®**  
DENTAL  
10920 WEST LINCOLN AVENUE  
WEST ALLIS, WI 53227

PROJECT:  
**SOUTHERN MAINE ORAL SURGERY**  
LOCATION:  
131 JOHNSON ROAD  
PORTLAND, ME 04102

HENRY SCHEIN REP:  
JESSE LEVEILLE  
CENTER:  
BOSTON, MA  
PHONE #:  
(207) 233-4978

**-IMPORTANT NOTE-**  
THIS DOCUMENT HAS BEEN PREPARED AS AN INSTRUMENT OF PROFESSIONAL SERVICE, AND IS NOT AN ARCHITECTURAL PLAN. IDEAS/ DESIGNS INCLUDED HEREIN ARE THE SOLE PROPERTY OF HENRY SCHEIN DENTAL AND ARE PROTECTED UNDER COPYRIGHT. THEY MAY NOT BE USED OR REPRODUCED WITHOUT EXPRESSED WRITTEN CONSENT OF HENRY SCHEIN AND FULL PAYMENT OF ANY ASSOCIATED DESIGN FEES.  
**ALL DIMENSIONS ARE SUBJECT TO JOB-SITE VERIFICATION.**

DRAWING NAME:  
SMOS-1c-F  
PROJECT START DATE:  
08/11/2014  
FINALS START DATE:  
08/20/2014  
DRAWN BY: AKL  
FINALS BY: AKL  
CHECKED BY: TJK

REVISIONS:  
10/24/14 AKL  
---  
---  
---  
---  
---  
INT.SQ.FT.= 3992

SCALE: SHT. SIZE:  
3/16"=1'-0" D  
PLUMBING PLAN  
**SP.1**