

**AZIMUTH LLC**

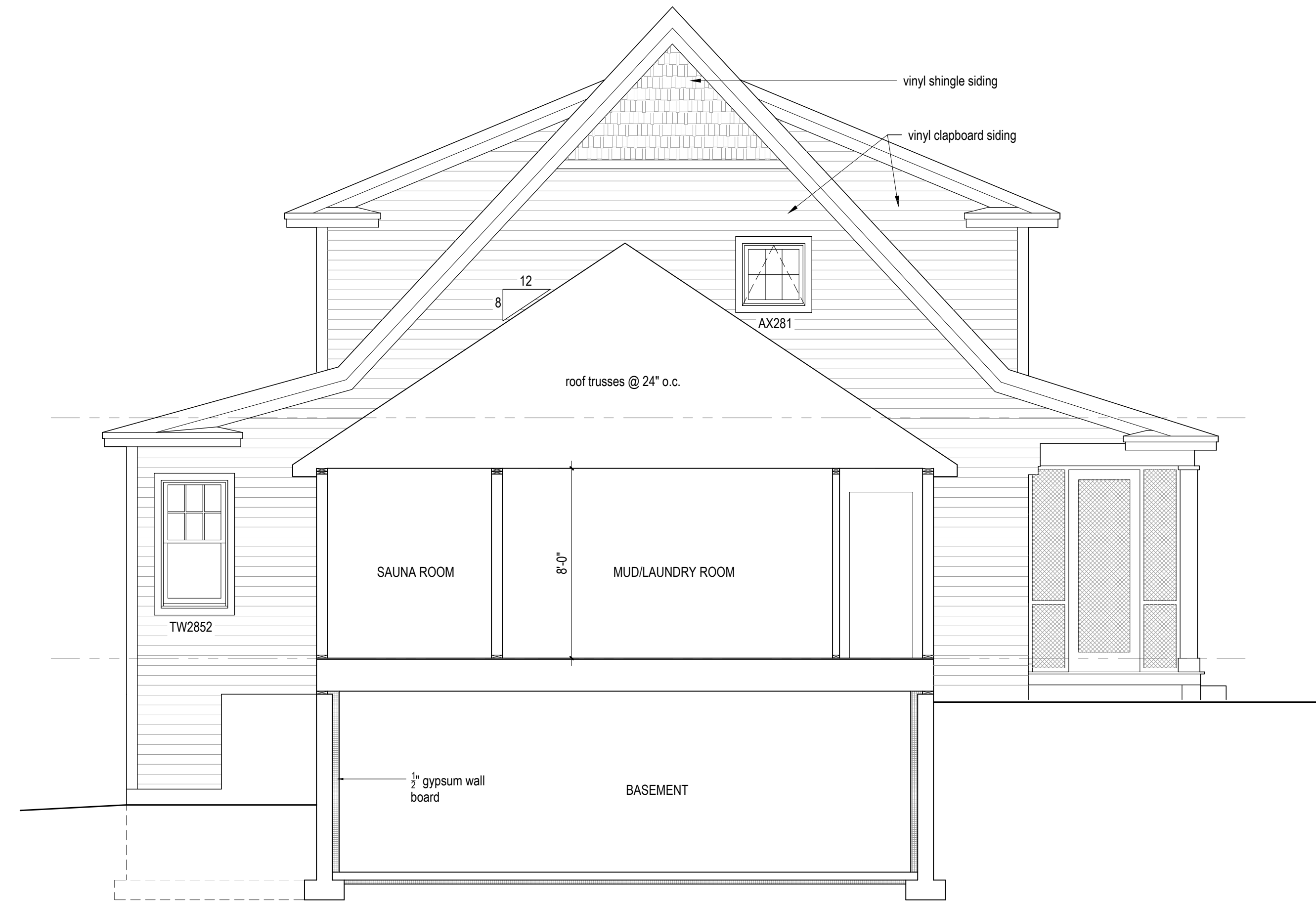
**josef chalut  
architect**  
327 ocean house road  
Cape Elizabeth, Maine  
cell 207 318 3234  
e: azimuth@maine.ir.com

Issued for Permit  
August 27, 2014  
revised: 9/12/2014

Tamaki, Single Family Residence  
131 River's Edge Road,  
Portland Maine  
CBL: 229 A 045  
ZD C8, Shoreland Overlay

**Exterior Elevations**

**a5**



**1 West Elevation**  
scale: 1/4" = 1'-0"



**2 North Elevation**  
scale: 1/4" = 1'-0"