

Not For  
Construction

**HUTCHINS**  
DESIGN & BUILD

9 Woodland Drive  
Waterboro, Maine  
04087  
207.409.6584

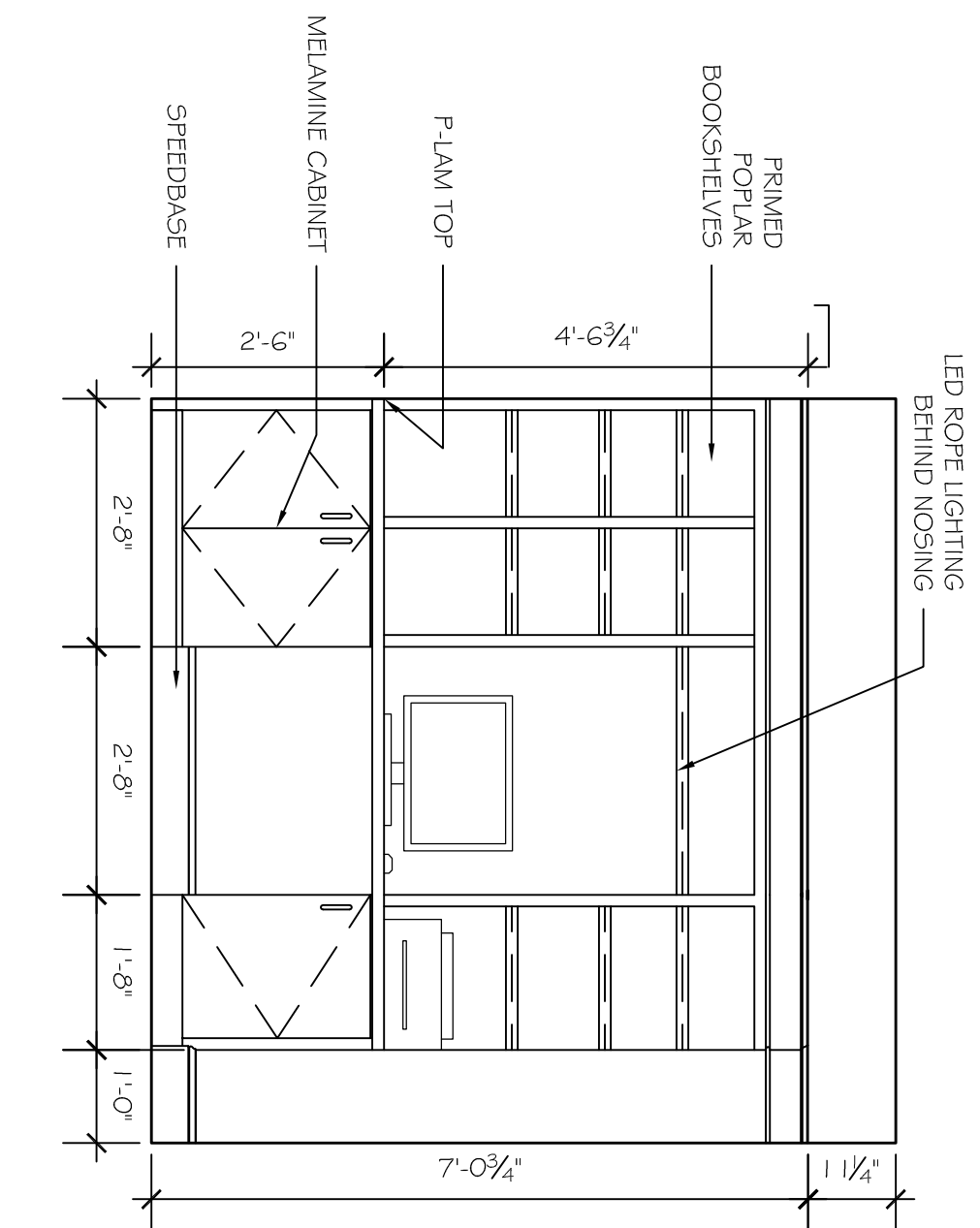
[hutchinsdesignandbuild.com](http://hutchinsdesignandbuild.com)

Casey Residence  
127 River's Edge Dr  
Portland, Maine

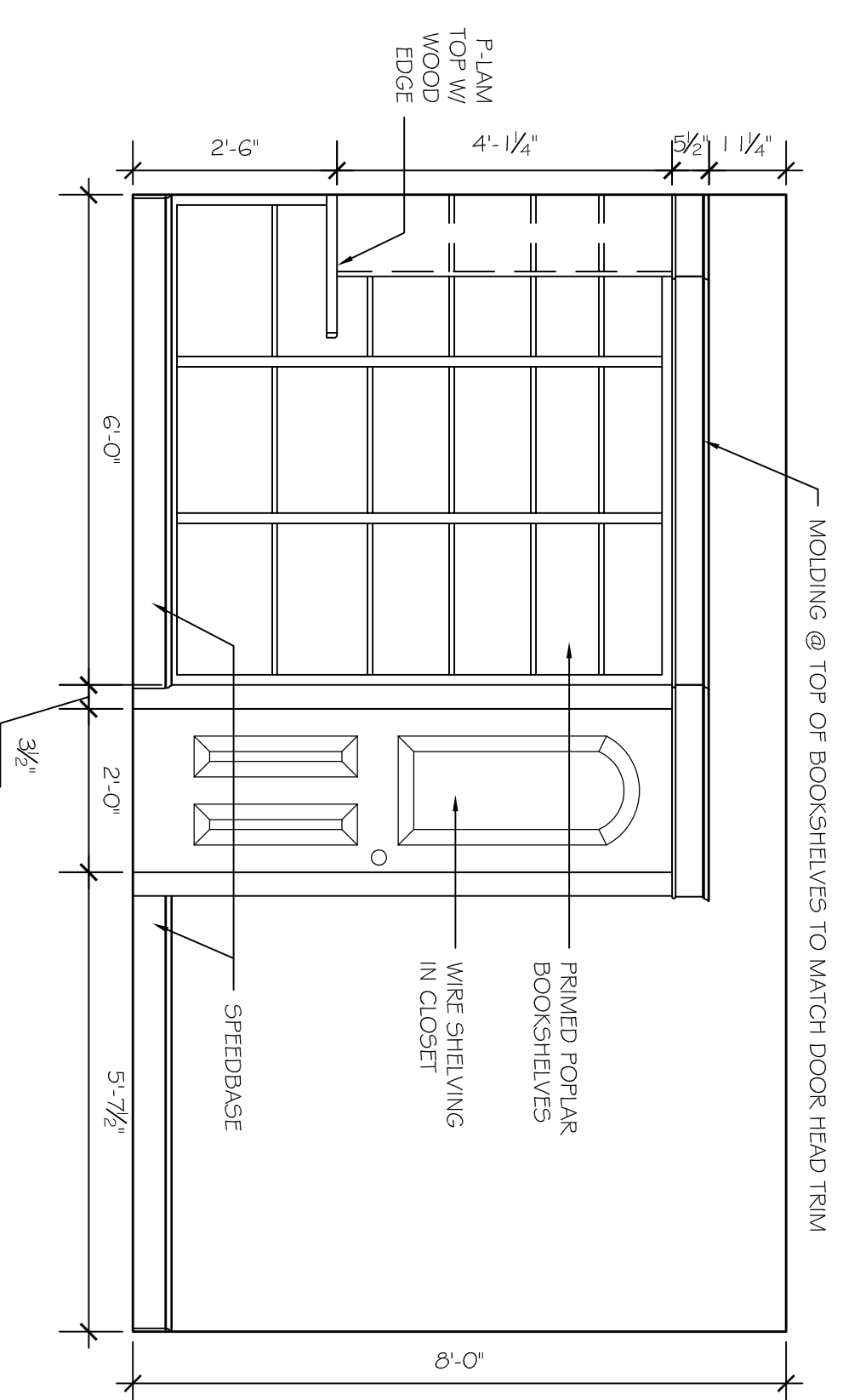
Sheet Title:  
Interior Elevations

Date:  
12.01.09.  
Scale:  
3/8" = 1'-0"  
Revisions:  
Sheet Number:

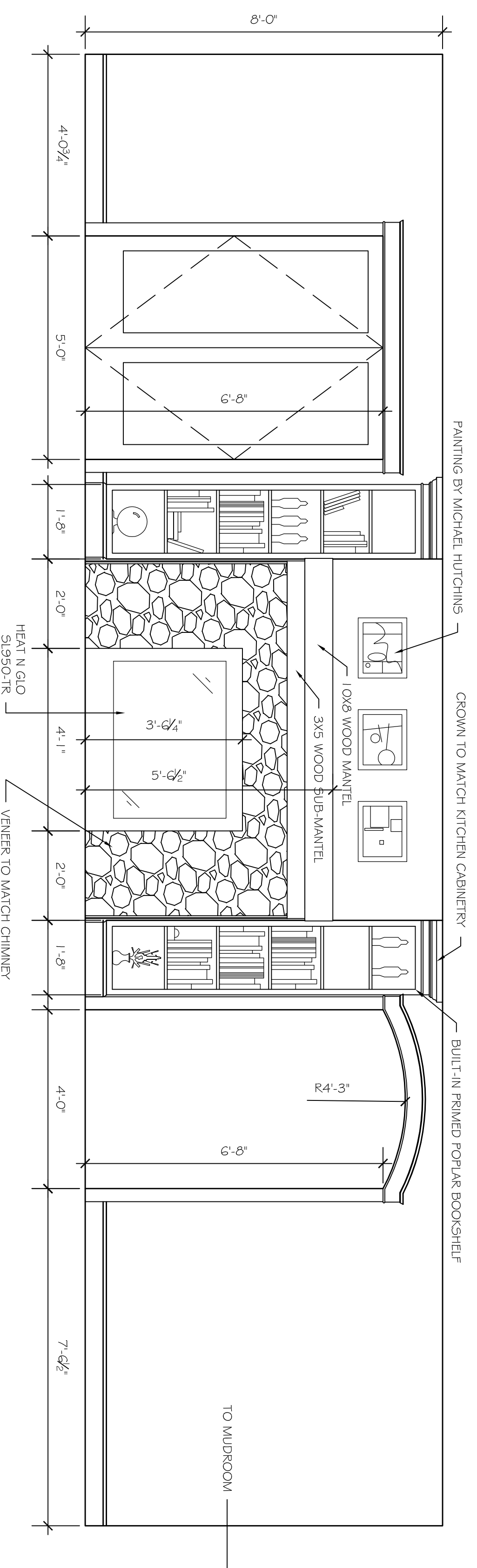
**A5.2**



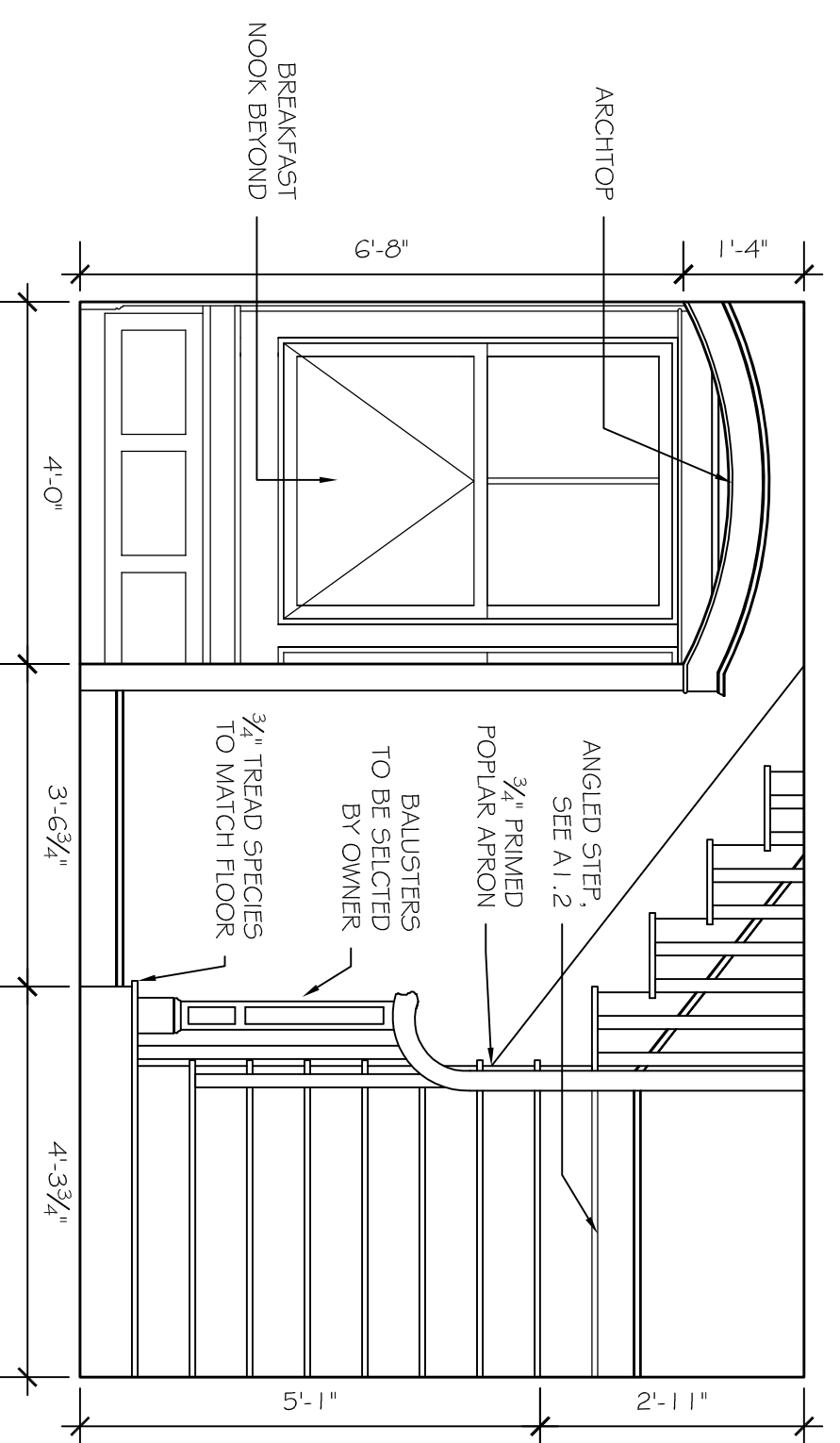
1 OFFICE/STUDY CASEWORK  
1/2" = 1'-0"



2 OFFICE/STUDY CASEWORK  
1/2" = 1'-0"



3 ELEVATION AT FIREPLACE W/ CASEWORK  
1/2" = 1'-0"



4 ELEVATION AT ENTRY/FOYER  
1/2" = 1'-0"