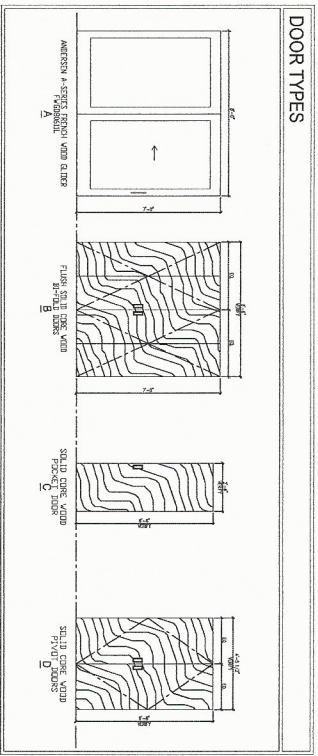


ITEM #	DESCRIPTION	QUANTITY	UNIT	DATE
001	GENERAL FINISHES			
002	WALLS			
003	FLOOR			
004	COUNTERTOPS			
005	PAINT			
006	MILKWORK			
007	FINISH NOTES			
008	WALL KEY NOTES			
009	FINISH NOTES			
010	WALL KEY NOTES			
011	FINISH NOTES			
012	WALL KEY NOTES			
013	FINISH NOTES			
014	WALL KEY NOTES			
015	FINISH NOTES			
016	WALL KEY NOTES			
017	FINISH NOTES			
018	WALL KEY NOTES			
019	FINISH NOTES			
020	WALL KEY NOTES			

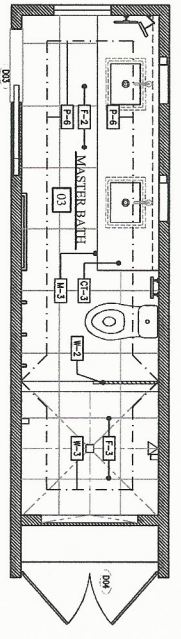
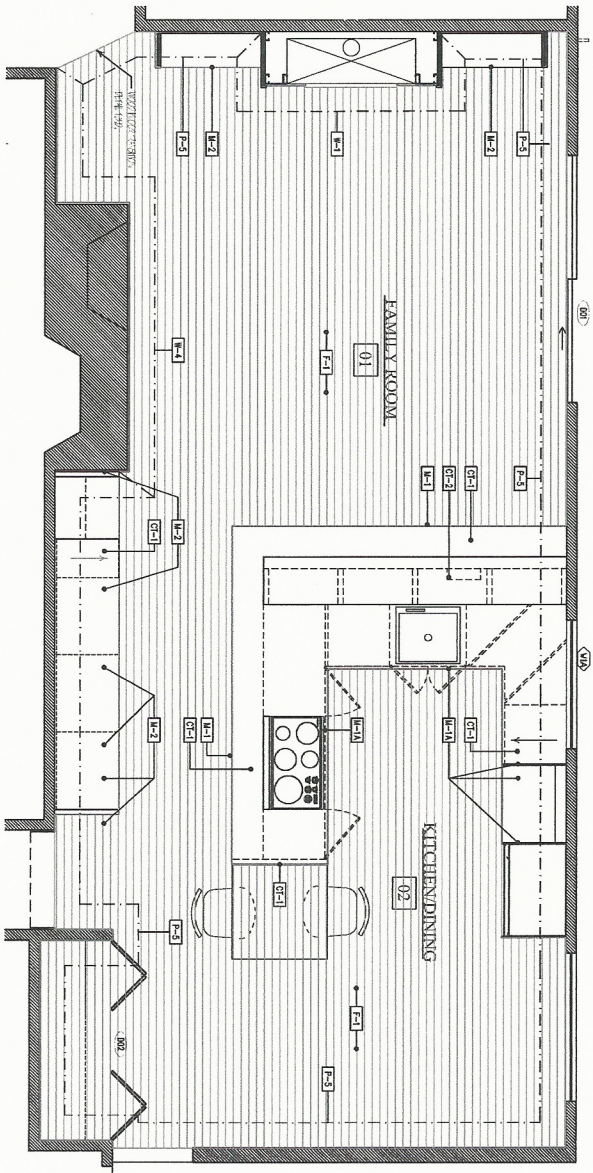
### DOOR & WINDOW SCHEDULE

NO.	SYMBOL	TYPE	SIZE	MANUFACTURER	FINISH	EXTENSION	REMARKS
1	W-1	WIND	36" x 78"	WIND	W-1	W-1	
2	W-2	WIND	36" x 78"	WIND	W-2	W-2	
3	W-3	WIND	36" x 78"	WIND	W-3	W-3	
4	W-4	WIND	36" x 78"	WIND	W-4	W-4	
5	W-5	WIND	36" x 78"	WIND	W-5	W-5	
6	W-6	WIND	36" x 78"	WIND	W-6	W-6	
7	W-7	WIND	36" x 78"	WIND	W-7	W-7	
8	W-8	WIND	36" x 78"	WIND	W-8	W-8	
9	W-9	WIND	36" x 78"	WIND	W-9	W-9	
10	W-10	WIND	36" x 78"	WIND	W-10	W-10	
11	W-11	WIND	36" x 78"	WIND	W-11	W-11	
12	W-12	WIND	36" x 78"	WIND	W-12	W-12	
13	W-13	WIND	36" x 78"	WIND	W-13	W-13	
14	W-14	WIND	36" x 78"	WIND	W-14	W-14	
15	W-15	WIND	36" x 78"	WIND	W-15	W-15	
16	W-16	WIND	36" x 78"	WIND	W-16	W-16	
17	W-17	WIND	36" x 78"	WIND	W-17	W-17	
18	W-18	WIND	36" x 78"	WIND	W-18	W-18	
19	W-19	WIND	36" x 78"	WIND	W-19	W-19	
20	W-20	WIND	36" x 78"	WIND	W-20	W-20	

- ### DOOR TYPES
1. ALL DOOR TYPES SHALL BE DESIGNED TO OPEN IN THE DIRECTION INDICATED BY THE ARROW.
  2. DOOR OPERATING MECHANISMS SHALL BE DESIGNED TO OPERATE AT 90 DEGREES TO THE DOOR.
  3. DOOR OPERATING MECHANISMS SHALL BE DESIGNED TO OPERATE AT 90 DEGREES TO THE DOOR.
  4. ALL DOOR TYPES SHALL BE DESIGNED TO OPERATE AT 90 DEGREES TO THE DOOR.
  5. ALL DOOR TYPES SHALL BE DESIGNED TO OPERATE AT 90 DEGREES TO THE DOOR.
  6. ALL DOOR TYPES SHALL BE DESIGNED TO OPERATE AT 90 DEGREES TO THE DOOR.
  7. ALL DOOR TYPES SHALL BE DESIGNED TO OPERATE AT 90 DEGREES TO THE DOOR.
  8. ALL DOOR TYPES SHALL BE DESIGNED TO OPERATE AT 90 DEGREES TO THE DOOR.
  9. ALL DOOR TYPES SHALL BE DESIGNED TO OPERATE AT 90 DEGREES TO THE DOOR.
  10. ALL DOOR TYPES SHALL BE DESIGNED TO OPERATE AT 90 DEGREES TO THE DOOR.
  11. ALL DOOR TYPES SHALL BE DESIGNED TO OPERATE AT 90 DEGREES TO THE DOOR.
  12. ALL DOOR TYPES SHALL BE DESIGNED TO OPERATE AT 90 DEGREES TO THE DOOR.
  13. ALL DOOR TYPES SHALL BE DESIGNED TO OPERATE AT 90 DEGREES TO THE DOOR.



**ENERGY RATING:**  
 D01 - Andersen FV6D90611L U 30  
 W1A - Andersen AFM4420/AA4414V R 24



### Finish Schedule:

NO.	TYPE	LOCATION	DESCRIPTION
F-1	FLOOR	NEW HARDWOOD FLOOR	RE: 1/8" OAK FOR LOCATIONS TO MATCH EXISTING
F-2	FLOOR	WALLS	RE: 1/2" OAK FOR PATERN
F-3	FLOOR	WALLS	RE: 1/2" OAK FOR PATERN

### Walls

NO.	TYPE	LOCATION	DESCRIPTION
W-1	WALL	RE: 1/2" OAK FOR PATERN	RE: 1/2" OAK FOR PATERN
W-2	WALL	RE: 1/2" OAK FOR PATERN	RE: 1/2" OAK FOR PATERN
W-3	WALL	RE: 1/2" OAK FOR PATERN	RE: 1/2" OAK FOR PATERN
W-4	WALL	RE: 1/2" OAK FOR PATERN	RE: 1/2" OAK FOR PATERN

### Paint

NO.	TYPE	LOCATION	DESCRIPTION
P-1	PAINT	RE: 1/2" OAK FOR PATERN	RE: 1/2" OAK FOR PATERN
P-2	PAINT	RE: 1/2" OAK FOR PATERN	RE: 1/2" OAK FOR PATERN
P-3	PAINT	RE: 1/2" OAK FOR PATERN	RE: 1/2" OAK FOR PATERN
P-4	PAINT	RE: 1/2" OAK FOR PATERN	RE: 1/2" OAK FOR PATERN
P-5	PAINT	RE: 1/2" OAK FOR PATERN	RE: 1/2" OAK FOR PATERN
P-6	PAINT	RE: 1/2" OAK FOR PATERN	RE: 1/2" OAK FOR PATERN
P-7	PAINT	RE: 1/2" OAK FOR PATERN	RE: 1/2" OAK FOR PATERN

### Countertops

NO.	TYPE	LOCATION	DESCRIPTION
C1-1	COUNTERTOP	RE: 1/2" OAK FOR PATERN	RE: 1/2" OAK FOR PATERN
C1-2	COUNTERTOP	RE: 1/2" OAK FOR PATERN	RE: 1/2" OAK FOR PATERN
C1-3	COUNTERTOP	RE: 1/2" OAK FOR PATERN	RE: 1/2" OAK FOR PATERN

### Milkwork

NO.	TYPE	LOCATION	DESCRIPTION
M-1	MILKWORK	RE: 1/2" OAK FOR PATERN	RE: 1/2" OAK FOR PATERN
M-2	MILKWORK	RE: 1/2" OAK FOR PATERN	RE: 1/2" OAK FOR PATERN
M-3	MILKWORK	RE: 1/2" OAK FOR PATERN	RE: 1/2" OAK FOR PATERN

### Wall Key Notes:

1. G.C. TO COORDINATE ALL FINISHES TO ALLOW FOR SMOOTH TRANSITIONS BETWEEN MATERIALS.
2. G.C. IS RESPONSIBLE FOR PATCHING & REPAIRING WALL & CEILING AFTER INSTALLATION OF DECOR.
3. CONTRACTOR SHALL PROVIDE & INSTALL ALL STAPLERS, BRACKETS, BRACKETS, & SUPPORTING BRACKETS MECHANICAL, ELECTRICAL, OR VISC. EQUIPMENT.
4. CONTRACTOR SHALL PROVIDE & INSTALL ALL STAPLERS, BRACKETS, BRACKETS, & SUPPORTING BRACKETS MECHANICAL, ELECTRICAL, OR VISC. EQUIPMENT.
5. CONTRACTOR SHALL PROVIDE & INSTALL ALL STAPLERS, BRACKETS, BRACKETS, & SUPPORTING BRACKETS MECHANICAL, ELECTRICAL, OR VISC. EQUIPMENT.
6. CONTRACTOR SHALL PROVIDE & INSTALL ALL STAPLERS, BRACKETS, BRACKETS, & SUPPORTING BRACKETS MECHANICAL, ELECTRICAL, OR VISC. EQUIPMENT.
7. CONTRACTOR SHALL PROVIDE & INSTALL ALL STAPLERS, BRACKETS, BRACKETS, & SUPPORTING BRACKETS MECHANICAL, ELECTRICAL, OR VISC. EQUIPMENT.
8. CONTRACTOR SHALL PROVIDE & INSTALL ALL STAPLERS, BRACKETS, BRACKETS, & SUPPORTING BRACKETS MECHANICAL, ELECTRICAL, OR VISC. EQUIPMENT.
9. CONTRACTOR SHALL PROVIDE & INSTALL ALL STAPLERS, BRACKETS, BRACKETS, & SUPPORTING BRACKETS MECHANICAL, ELECTRICAL, OR VISC. EQUIPMENT.
10. CONTRACTOR SHALL PROVIDE & INSTALL ALL STAPLERS, BRACKETS, BRACKETS, & SUPPORTING BRACKETS MECHANICAL, ELECTRICAL, OR VISC. EQUIPMENT.

**NOT FOR CONSTRUCTION**

**FINISHES & SPECIFICATIONS**

**19.01**

Interior Architecture:	Revisions and Notes:	Architect:	Client:
Date: 12.17.14	Scale: AS SHOWN	Designed By: TAD	Drawing:
Drawn By: TLD	Set:	CONSTRUCTION SET	

**GARRAND/PIERSON RESIDENCE**

6 PARTRIDGE CIRCLE  
PORTLAND, MAINE 04102

urbandwellings  
422 1/2 FORE STREET, 2ND FLR  
PORTLAND, ME 04103  
P 207.780.6136 F 207.842.6056