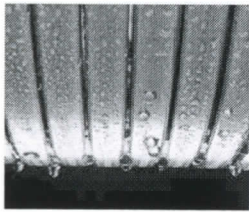


Gas condensing technology

Vitodens 222-W – 3.2 to 35 kW
Vitodens 200-W – 3.2 to 150 kW



Inox-Radial heat exchanger

Vitodens 222-W – Condensing storage combi boiler with integral stainless steel loading cylinder

With the Vitodens 222-W, Viessmann offers a particularly space saving, wall mounted, gas condensing storage combi boiler for high DHW demands. The heat cell comprises the proven stainless steel Inox-Radial heat exchanger, the modulating MatriX cylinder burner and the automatic Lambda Pro Control combustion controller. It is particularly recommended for installation in new build, and will easily fit in, even where space is tight.

How the loading cylinder works

In comparison to a conventional DHW cylinder, a loading cylinder works with a significantly lower water content to provide the same volume of hot water. The water heated to the required temperature in the heat exchanger (instantaneous water heater) continually charges the loading cylinder and is, therefore, immediately available for further drawings. Temperature sensors ensure that the preset temperature is reached and maintained.

Where necessary, the MatriX cylinder burner in the Vitodens 222-W starts automatically and ensures the required water temperature is reached. This principle is particularly relevant when filling a bathtub or taking a long shower.

Vitodens 200-W: Efficient and attractive – with a price to match

With the Vitodens 200-W, Viessmann offers a wall mounted gas condensing boiler with an exemplary price/performance ratio, excellent heating and DHW convenience, compact dimensions and a timeless, elegant design.

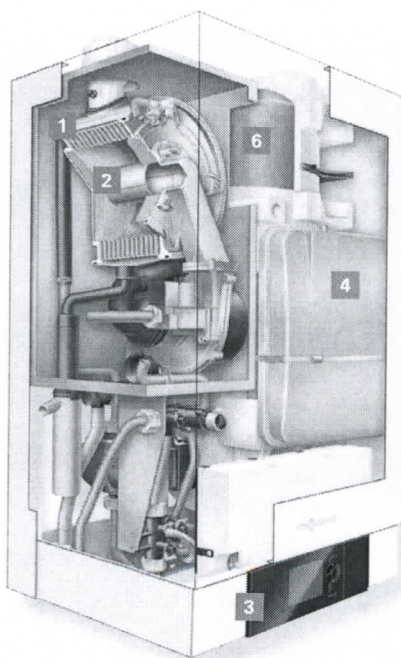
Up to 98 percent efficiency

The Vitodens 200-W wall mounted gas condensing boiler consumes less energy because it also utilises the heat in the flue gas. This results in efficiency of up to 98 percent, which will reduce your heating bills and benefit the environment.

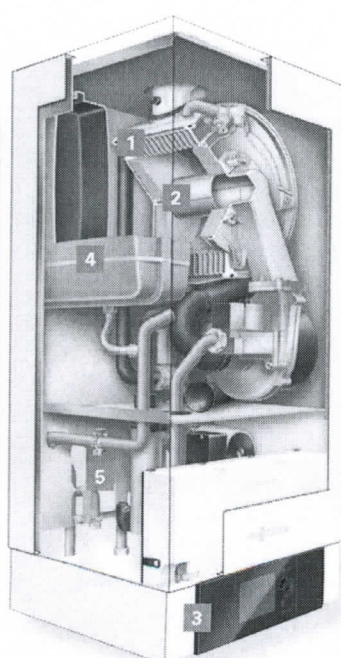
Robust burner with a long service life

The MatriX cylinder burner is characterised by a long service life thanks to its stainless steel MatriX gauze. The integral Lambda Pro Control automatically adjusts combustion to fluctuating gas types. This ensures consistently high energy efficiency and offers security for the future in liberalised gas markets and where biogas is added to natural gas.

The Lambda Pro Control combustion controller extends the flue gas inspection intervals to three years [in Germany]. That reduces your fees.



Vitodens 222-W



Vitodens 200-W

- 1 Stainless steel Inox-Radial heat exchanger
- 2 MatriX cylinder burner
- 3 Vitotronic control unit
- 4 Expansion vessel
- 5 Stainless steel plate heat exchanger (combi boiler)
- 6 Stainless steel loading cylinder inside the Vitodens 222-W