



The new degree of comfort.™



Residential Solar Electric  
Solaraide HE Water Heaters  
& Storage Tanks

## Solaraide™ HE tanks are available as electric backup water heaters and as storage tanks, designed for use with closed loop solar water heating systems

### Features & Benefits

- Double wall heat exchanger includes copper tubing wrapped around the tank and secured within the jacket for positive leak protection
- Two well insulated models to choose from...a storage tank or a high efficiency 4500 Watt backup electric water heater
- Electric backup model provides at least 40-gallons of stored hot water

### Easy Installation and Maintenance

- Collector feed and return fittings conveniently located on front of tank for easy installation
- A special 1/2" NPT opening is provided for installation of a "probe type" thermostat
- Durable brass drain valve for easy maintenance

### Tank Design & Construction

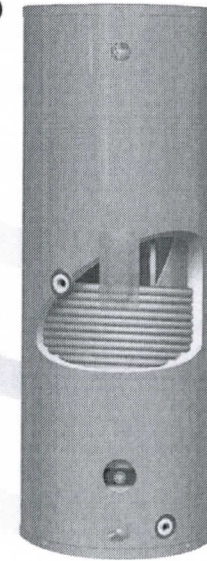
- Cold water inlet brings cold water to tank bottom to prevent mixing with heated water
- Rheemglas® tank lining resists corrosion and prolongs tank life
- Anode rod equalizes aggressive action for prolonged tank life
- Temperature and pressure relief valve included
- Electric backup model has automatic temperature control and over heat protection

### Warranty

- 6-Year limited tank and parts warranty\*

\*See Residential Warranty Certificate for complete information

Units meet or exceed ANSI requirements and have been tested according to D.O.E. procedures. Units meet or exceed the energy efficiency requirements of NAECA, ASHRAE standard 90, ICC Code and all state energy efficiency performance criteria.



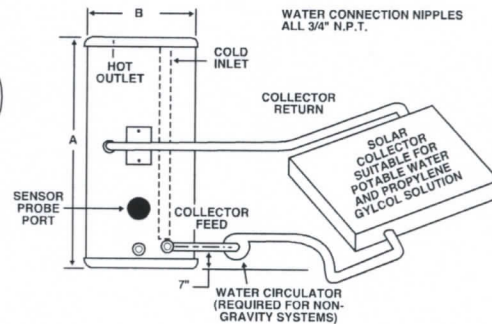
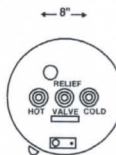
**Solaraide HE Tanks**  
80 and 120-Gallon Capacities  
Heat Exchanger  
Electric WHs and Storage Tanks



### Copper Heat Exchanger Coil Type L Copper 5/8" I.D.

Solaraide HE Tank Capacity	Coil Capacity Gallons	Length of Tubing Around Tank (Ft)
80 Gallons	2.2	120
120 Gallons	2.6	143

PRESSURE DROP THROUGH COIL (Feet of H <sub>2</sub> O)		
Flow Rate	Head Loss (Feet)	
	80-Gallon	120-Gallon
1 GPM	1.3	1.6
2 GPM	4.8	5.7
3 GPM	10.0	12.0



DESCRIPTION				ROUGHING IN DIMENSIONS (SHOWN IN INCHES)			ENERGY INFORMATION
TYPE	GAL. CAP.	MODEL NUMBER	ELEMENT WATTAGE UPPER	HEIGHT A	DIAMETER B	APPROX. SHIP WT. (LBS.)	APPROX. R-FACTOR
T A L	80	81V80HE-1	4500 W*	58-3/4	24-1/2	222	R-17.3
	80	81V80HE-T	Storage only	58-3/4	24-1/2	222	R-17.3
	120	82V120HE-1	4500 W*	62	28-1/4	380	R-17.3
	120	82V120HE-T	Storage only	62	28-1/4	380	R-17.3

\*Heaters furnished with standard 240 volt AC, single phase non-simultaneous wiring and 4500 watt heating element.  
If heating elements of different wattages than those shown are demanded by zone requirements, they must be specifically requested.  
To prevent corrosion, proper pH levels in transfer fluid must be maintained.  
Solaraide models meet all current state requirements for solar storage tanks.  
The tanks are Rheemglas lined and are designed to operate up to 150 PSI.

In keeping with its policy of continuous progress and product improvement, Rheem reserves the right to make changes without notice.

Rheem Water Heating • 101 Bell Road  
Montgomery, Alabama 36117-4305 • www.rheem.com

Rheem Canada Ltd./Ltée • 125 Edgeware Road, Unit 1  
Brampton, Ontario L6Y 0P5 • www.rheem.com



INTEGRATED HOME COMFORT