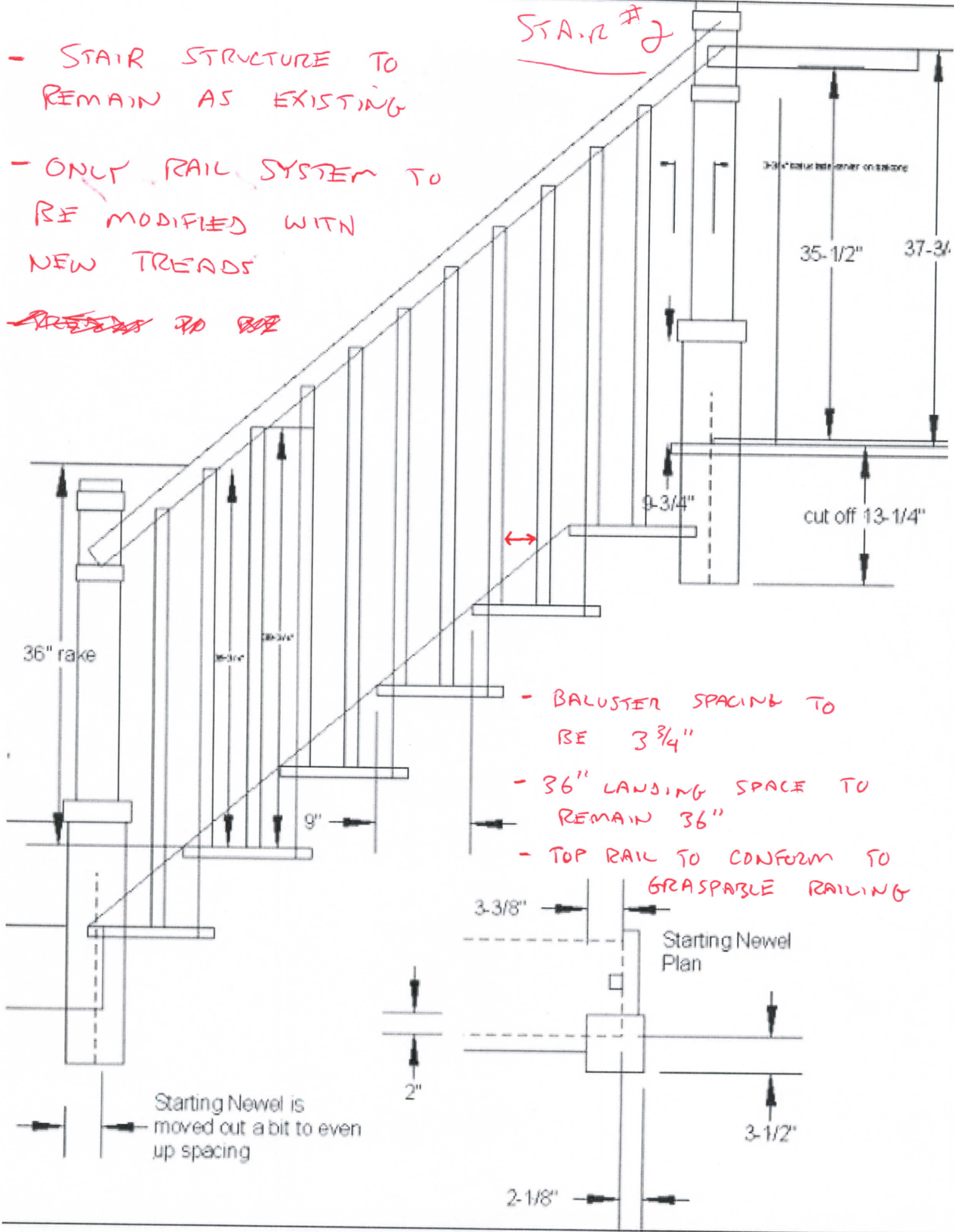


- STAIR STRUCTURE TO REMAIN AS EXISTING

- ONLY RAIL SYSTEM TO BE MODIFIED WITH NEW TREADS

~~AREAS TO BE~~

STAIR # 2



- BALUSTER SPACING TO BE 3 3/4"

- 36" LANDING SPACE TO REMAIN 36"

- TOP RAIL TO CONFORM TO GRASPABLE RAILING