

ALTERATIONS TO ORIGINAL APPROVED RECORDING PLAT HAVE BEEN APPROVED BY THE CITY OF PORTLAND DEPARTMENT OF PLANNING AND COMMUNITY DEVELOPMENT IN COMPLIANCE WITH SECTION 14-456 OF THE SUBDIVISION ORDINANCE.

ALTERATION NO.	DATE	DESCRIPTION	APPROVED BY DIRECTOR OF PLANNING
1	12/18/87	NOTE 9 OF THE PLAT TO BE REVISED TO REFLECT THE DEVELOPER AS BERMA PARTNERSHIP. THE CITY OF PORTLAND DEPARTMENT OF PLANNING IS CORRECTLY IDENTIFIED AS BERMA PARTNERSHIP.	[Signature]

**REVISIONS:**

1. PREVIOUS REVISIONS ARE "THANK YOU" FROM ORIGINAL LOTS OF JERRY LARSEN IN PORTLAND, MAINE TO BE CONVERTED TO "LAURENCE BOUTLINE" BY JOHN GIBSON'S SUBDIVISION DATED 02/19/87.

2. IF THE PROTECTIVE ZONE RESTRICTIONS WERE PLACED BY OWNER COMPLIANT. REFER TO OWNER FOR RESTRICTIONS.

3. IF THE RESTRICTIONS FOR LOTS 19, 20, AND 21 SHALL BE TAKEN FROM LARSEN'S DEED, THE CITY OF PORTLAND DEPARTMENT OF PLANNING WILL REQUIRE THE SUBMITTER OF A NEW PLAT TO SHOW THE RESTRICTIONS, AND THE RESTRICTIONS SHALL BE IDENTIFIED AS "LAURENCE BOUTLINE" INSTEAD OF "JERRY LARSEN".

4. THE CITY OF PORTLAND DEPARTMENT OF PLANNING WILL APPROVE A PLAT WHICH SHOWS THE RESTRICTIONS AS "LAURENCE BOUTLINE" INSTEAD OF "JERRY LARSEN" ONLY IF THE RESTRICTIONS ARE IDENTIFIED AS "LAURENCE BOUTLINE" IN THE PLAT.

5. ALL OTHERS CREATED PLANS FOR THE PROJECT HAS BEEN PREPARED BY DESIGN-NOTIFY ASSOCIATES, INC. "NOTIFY" NOTIFICATION MANAGEMENT AND RECORDS CONTROL PROGRAM FOR THE CITY OF PORTLAND DEPARTMENT OF PLANNING, PORTLAND, MAINE. "DESIGN" MEANS THAT THE PLAT IS IN FULL COMPLIANCE WITH THE CITY OF PORTLAND DEPARTMENT OF PLANNING'S REQUIREMENTS FOR THIS PROGRAM. THE SUBMITTER SHALL BE RESPONSIBLE TO OBTAIN CONSTRUCTION.

6. IF THE SUBMITTER SHALL BE NOTIFIED TO MAKE THE NECESSARY CHANGES TO THE PLAT, THE SUBMITTER SHALL BE RESPONSIBLE FOR THE NECESSARY CHANGES TO THE PLAT.

7. THE CITY OF PORTLAND DEPARTMENT OF PLANNING WILL NOT BE RESPONSIBLE FOR THE NECESSARY CHANGES TO THE PLAT.

8. THE CITY OF PORTLAND DEPARTMENT OF PLANNING WILL NOT BE RESPONSIBLE FOR THE NECESSARY CHANGES TO THE PLAT.

9. THE CITY OF PORTLAND DEPARTMENT OF PLANNING WILL NOT BE RESPONSIBLE FOR THE NECESSARY CHANGES TO THE PLAT.

10. THE CITY OF PORTLAND DEPARTMENT OF PLANNING WILL NOT BE RESPONSIBLE FOR THE NECESSARY CHANGES TO THE PLAT.

11. REFER TO MAP TO PLAN OF PROTECTIVE ZONE WHICH SHOWS THE PROTECTIVE ZONE WHICH IS IDENTIFIED AS "LAURENCE BOUTLINE" IN THE PLAT.

12. REFER TO MAP TO PLAN OF PROTECTIVE ZONE WHICH SHOWS THE PROTECTIVE ZONE WHICH IS IDENTIFIED AS "LAURENCE BOUTLINE" IN THE PLAT.

13. REFER TO MAP TO PLAN OF PROTECTIVE ZONE WHICH SHOWS THE PROTECTIVE ZONE WHICH IS IDENTIFIED AS "LAURENCE BOUTLINE" IN THE PLAT.

14. REFER TO MAP TO PLAN OF PROTECTIVE ZONE WHICH SHOWS THE PROTECTIVE ZONE WHICH IS IDENTIFIED AS "LAURENCE BOUTLINE" IN THE PLAT.

15. REFER TO MAP TO PLAN OF PROTECTIVE ZONE WHICH SHOWS THE PROTECTIVE ZONE WHICH IS IDENTIFIED AS "LAURENCE BOUTLINE" IN THE PLAT.

16. REFER TO MAP TO PLAN OF PROTECTIVE ZONE WHICH SHOWS THE PROTECTIVE ZONE WHICH IS IDENTIFIED AS "LAURENCE BOUTLINE" IN THE PLAT.

17. REFER TO MAP TO PLAN OF PROTECTIVE ZONE WHICH SHOWS THE PROTECTIVE ZONE WHICH IS IDENTIFIED AS "LAURENCE BOUTLINE" IN THE PLAT.

18. REFER TO MAP TO PLAN OF PROTECTIVE ZONE WHICH SHOWS THE PROTECTIVE ZONE WHICH IS IDENTIFIED AS "LAURENCE BOUTLINE" IN THE PLAT.

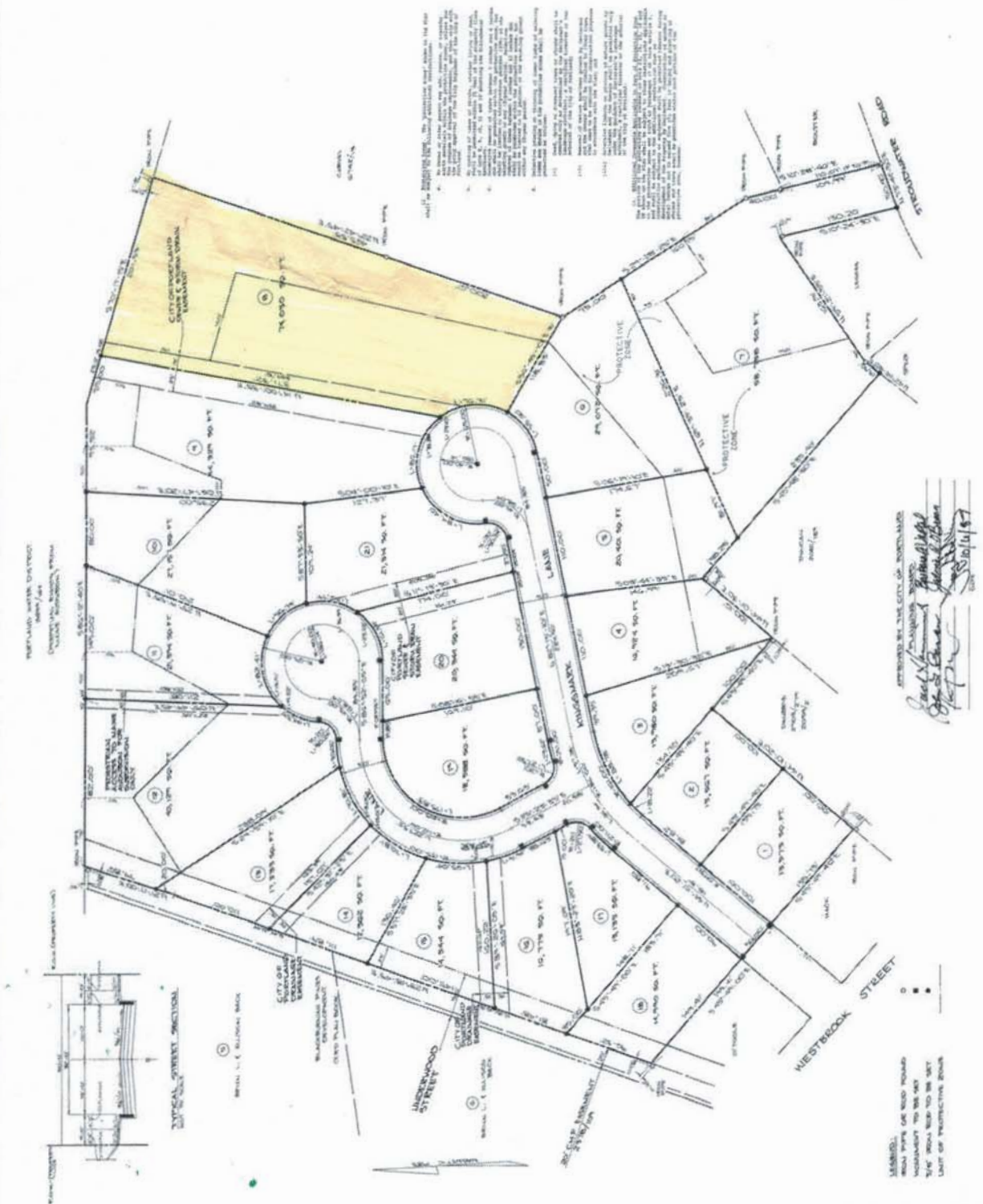
19. REFER TO MAP TO PLAN OF PROTECTIVE ZONE WHICH SHOWS THE PROTECTIVE ZONE WHICH IS IDENTIFIED AS "LAURENCE BOUTLINE" IN THE PLAT.

20. REFER TO MAP TO PLAN OF PROTECTIVE ZONE WHICH SHOWS THE PROTECTIVE ZONE WHICH IS IDENTIFIED AS "LAURENCE BOUTLINE" IN THE PLAT.

RECORDING FILE  
STROUDWATER POINT  
PROTECTIVE ZONE  
PORTLAND, MAINE

BERMA PARTNERSHIP  
Owen Haskell, Inc.  
City Engineer  
South Portland, Maine  
[Signature]

Date of D.C.B.W. 08/18/87  
Date of M.A.M. 08/18/87  
Date of A.C.W. 08/18/87  
Date of P.L. 08/18/87



REVISIONS TO ORIGINAL APPROVED RECORDING PLAT HAVE BEEN APPROVED BY THE CITY OF PORTLAND DEPARTMENT OF PLANNING AND COMMUNITY DEVELOPMENT IN COMPLIANCE WITH SECTION 14-456 OF THE SUBDIVISION ORDINANCE.

REVISIONS TO ORIGINAL APPROVED RECORDING PLAT HAVE BEEN APPROVED BY THE CITY OF PORTLAND DEPARTMENT OF PLANNING AND COMMUNITY DEVELOPMENT IN COMPLIANCE WITH SECTION 14-456 OF THE SUBDIVISION ORDINANCE.

REVISIONS TO ORIGINAL APPROVED RECORDING PLAT HAVE BEEN APPROVED BY THE CITY OF PORTLAND DEPARTMENT OF PLANNING AND COMMUNITY DEVELOPMENT IN COMPLIANCE WITH SECTION 14-456 OF THE SUBDIVISION ORDINANCE.

REVISIONS TO ORIGINAL APPROVED RECORDING PLAT HAVE BEEN APPROVED BY THE CITY OF PORTLAND DEPARTMENT OF PLANNING AND COMMUNITY DEVELOPMENT IN COMPLIANCE WITH SECTION 14-456 OF THE SUBDIVISION ORDINANCE.

REVISIONS TO ORIGINAL APPROVED RECORDING PLAT HAVE BEEN APPROVED BY THE CITY OF PORTLAND DEPARTMENT OF PLANNING AND COMMUNITY DEVELOPMENT IN COMPLIANCE WITH SECTION 14-456 OF THE SUBDIVISION ORDINANCE.

REVISIONS TO ORIGINAL APPROVED RECORDING PLAT HAVE BEEN APPROVED BY THE CITY OF PORTLAND DEPARTMENT OF PLANNING AND COMMUNITY DEVELOPMENT IN COMPLIANCE WITH SECTION 14-456 OF THE SUBDIVISION ORDINANCE.

REVISIONS TO ORIGINAL APPROVED RECORDING PLAT HAVE BEEN APPROVED BY THE CITY OF PORTLAND DEPARTMENT OF PLANNING AND COMMUNITY DEVELOPMENT IN COMPLIANCE WITH SECTION 14-456 OF THE SUBDIVISION ORDINANCE.

REVISIONS TO ORIGINAL APPROVED RECORDING PLAT HAVE BEEN APPROVED BY THE CITY OF PORTLAND DEPARTMENT OF PLANNING AND COMMUNITY DEVELOPMENT IN COMPLIANCE WITH SECTION 14-456 OF THE SUBDIVISION ORDINANCE.

REVISIONS TO ORIGINAL APPROVED RECORDING PLAT HAVE BEEN APPROVED BY THE CITY OF PORTLAND DEPARTMENT OF PLANNING AND COMMUNITY DEVELOPMENT IN COMPLIANCE WITH SECTION 14-456 OF THE SUBDIVISION ORDINANCE.

REVISIONS TO ORIGINAL APPROVED RECORDING PLAT HAVE BEEN APPROVED BY THE CITY OF PORTLAND DEPARTMENT OF PLANNING AND COMMUNITY DEVELOPMENT IN COMPLIANCE WITH SECTION 14-456 OF THE SUBDIVISION ORDINANCE.

REVISIONS TO ORIGINAL APPROVED RECORDING PLAT HAVE BEEN APPROVED BY THE CITY OF PORTLAND DEPARTMENT OF PLANNING AND COMMUNITY DEVELOPMENT IN COMPLIANCE WITH SECTION 14-456 OF THE SUBDIVISION ORDINANCE.

REVISIONS TO ORIGINAL APPROVED RECORDING PLAT HAVE BEEN APPROVED BY THE CITY OF PORTLAND DEPARTMENT OF PLANNING AND COMMUNITY DEVELOPMENT IN COMPLIANCE WITH SECTION 14-456 OF THE SUBDIVISION ORDINANCE.

REVISIONS TO ORIGINAL APPROVED RECORDING PLAT HAVE BEEN APPROVED BY THE CITY OF PORTLAND DEPARTMENT OF PLANNING AND COMMUNITY DEVELOPMENT IN COMPLIANCE WITH SECTION 14-456 OF THE SUBDIVISION ORDINANCE.

REVISIONS TO ORIGINAL APPROVED RECORDING PLAT HAVE BEEN APPROVED BY THE CITY OF PORTLAND DEPARTMENT OF PLANNING AND COMMUNITY DEVELOPMENT IN COMPLIANCE WITH SECTION 14-456 OF THE SUBDIVISION ORDINANCE.

REVISIONS TO ORIGINAL APPROVED RECORDING PLAT HAVE BEEN APPROVED BY THE CITY OF PORTLAND DEPARTMENT OF PLANNING AND COMMUNITY DEVELOPMENT IN COMPLIANCE WITH SECTION 14-456 OF THE SUBDIVISION ORDINANCE.