

PLAN NOTES:

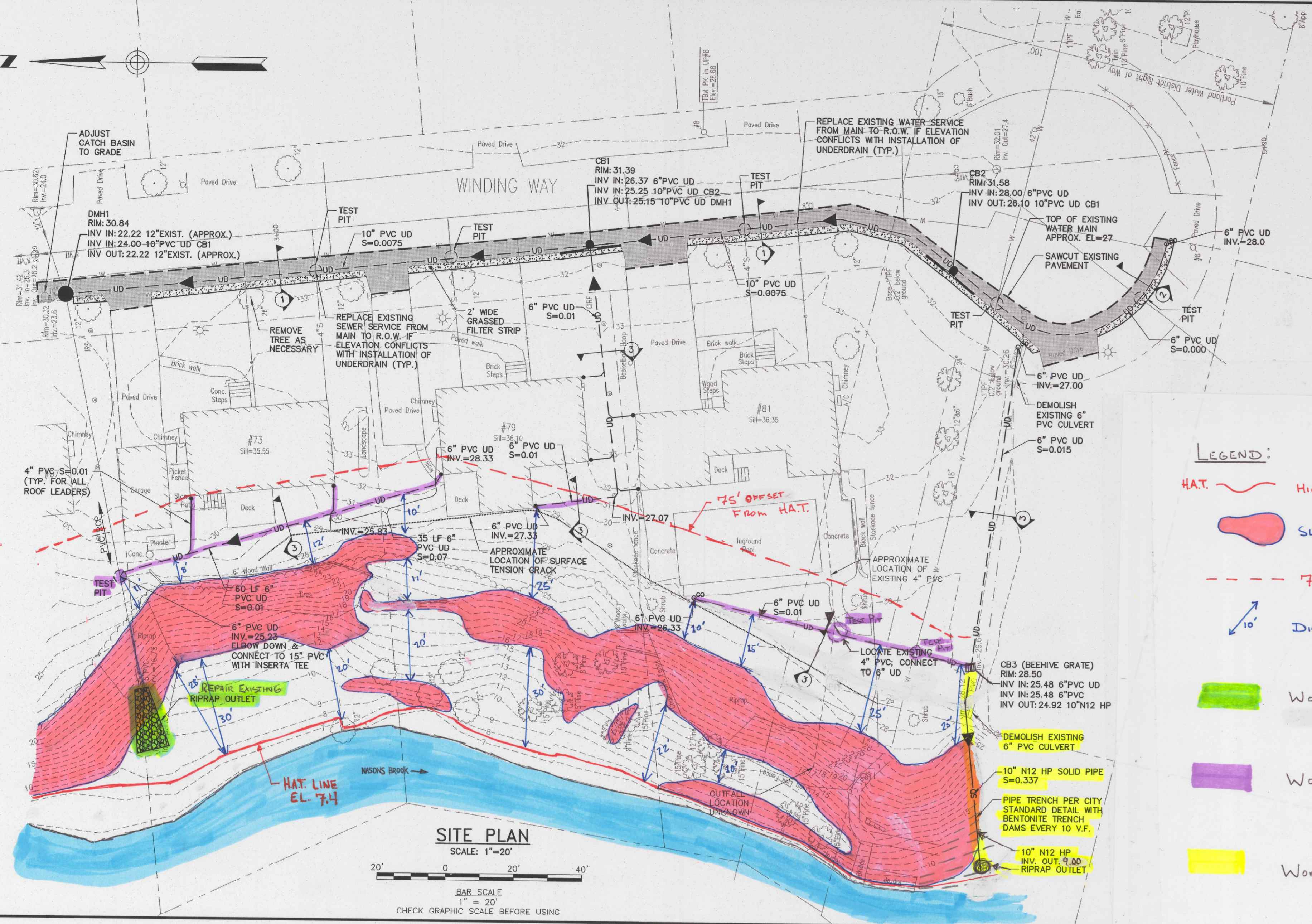
1. THE IMPROVEMENTS DEPICTED ON THIS PLAN ARE CONSIDERED A CONCEPT-LEVEL OF DESIGN. THIS PLAN IS NOT INTENDED TO BE UTILIZED AS A CONSTRUCTION-READY DESIGN DOCUMENTS.
2. BASE PLAN INFORMATION DERIVED FROM GROUND-LEVEL TOPOGRAPHIC SURVEY PERFORMED BY OWEN-HASKELL IN DECEMBER 2011. VERTICAL DATUM IS REFERENCED TO CITY DATUM = NGVD +0.02'. HORIZONTAL DATUM REFERENCED TO MADS3 STATE PLANE MAINE WEST ZONE US FOOT.
3. PROPERTY LINES ARE APPROXIMATE AS SHOWN AND WERE DERIVED FROM CITY ASSESSOR GIS DATA.
4. EROSION AND SEDIMENTATION CONTROLS ARE NOT DEPICTED ON THIS CONCEPT-LEVEL DESIGN PLAN; PROPER EROSION AND SEDIMENTATION CONTROLS WILL BE NECESSARY AND SHOULD BE INCORPORATED INTO CONSTRUCTION DOCUMENTS.

LEGEND

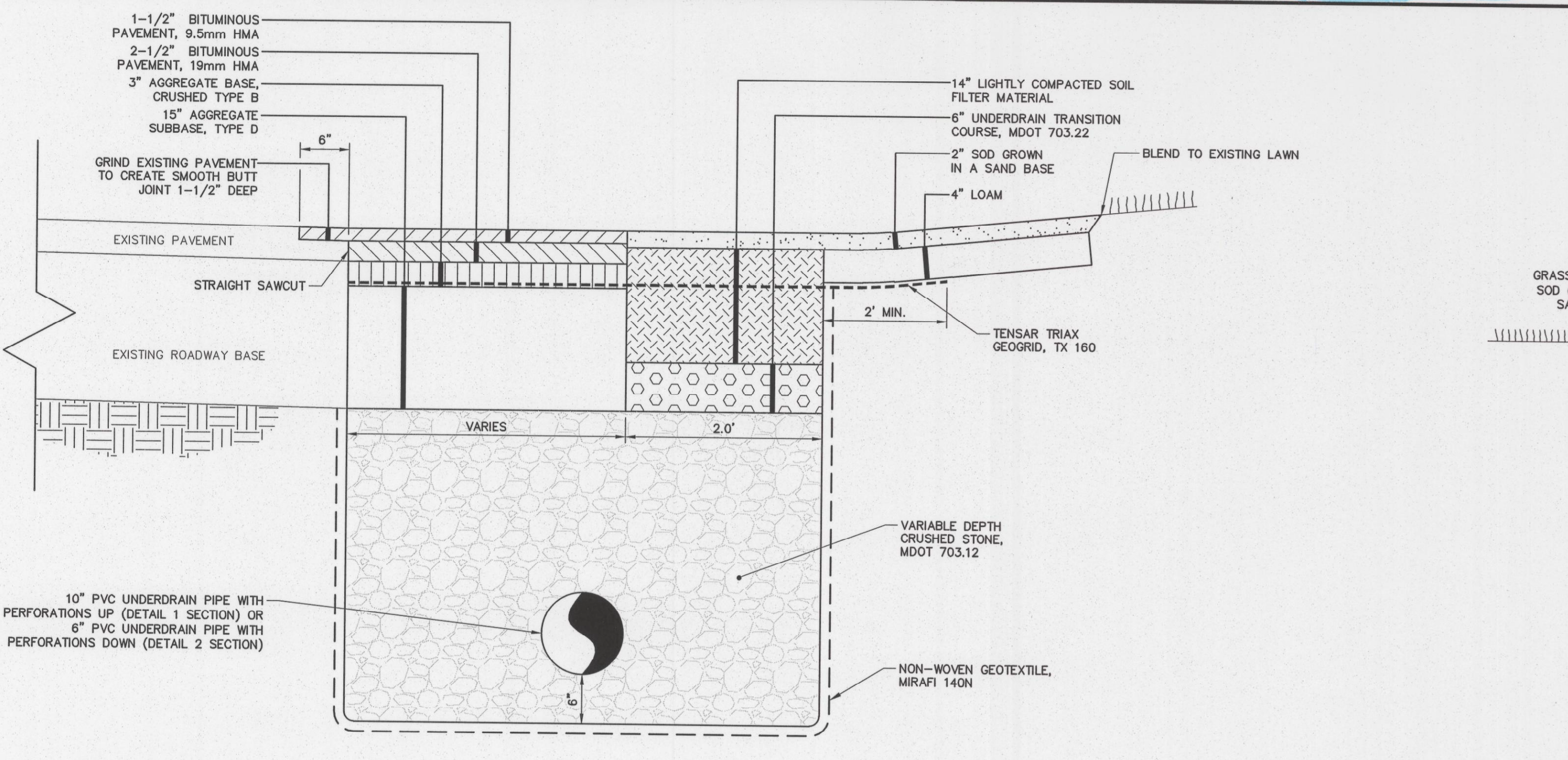
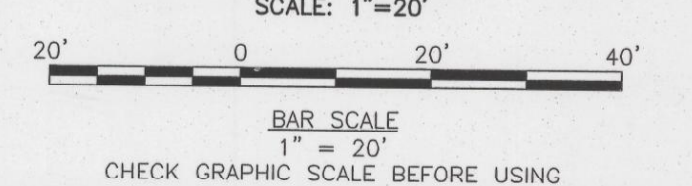
- UD PERFORATED UNDERDRAIN PIPE & DIRECTION OF FLOW
- APPROXIMATE LOCATION OF SURFACE TENSION CRACK
- 4" SOLID PVC PIPE FROM ROOF LEADER TO UNDERDRAIN CLEAN-OUT
- PAVEMENT RECONSTRUCTION WITH SAWCUT

LEGEND:

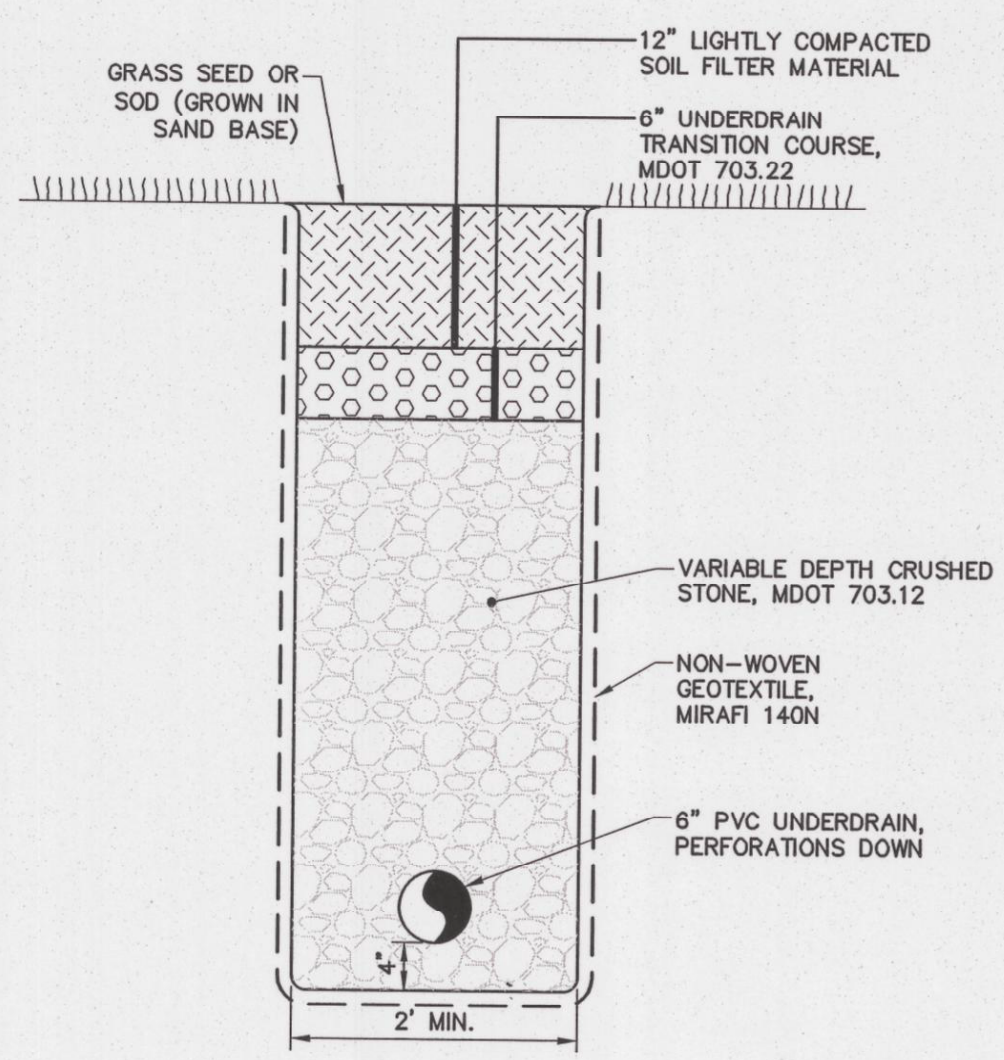
- H.A.T. HIGHEST ANNUAL TIDE LINE EL. 7.4 (NGVD29); FORD RIVER (MAINE DEP H.A.T. LEVELS FOR 2012)
- SLOPES OF 3 HORIZONTAL TO 1 VERTICAL FOOT OR STEEPER *NOTE THAT THESE SLOPES ARE HEAVILY VEGETATED.
- 75' OFFSET FROM H.A.T. LINE
- DISTANCE OF SLOPE THAT IS FLATTER THAN 3:1 BETWEEN AREA OF WORK AND H.A.T.
- WORK THAT QUALIFIES AS "MAINTENANCE" UNDER 38 M.R.S.A. §§ 480-Q; REPAIR OF AN OUTFALL; ADDITION / RESHAPING OF RIPRAP AT EXISTING RIP-RAP OUTFALL TO AVOID EROSION; EXEMPT FROM PERMITTING.
- WORK THAT QUALIFIES UNDER CHAPTER 305 PERMIT-BY-RULE "2. ACTIVITIES ADJACENT TO PROTECTED NATURAL RESOURCE." WORK FALLS WITHIN 75' OF H.A.T., YET HAS AT LEAST 25' OF LAND THAT IS FLATTER THAN 3:1 BETWEEN WORK & RESOURCE.
- WORK THAT QUALIFIES UNDER CHAPTER 305 PERMIT-BY-RULE "7. OUTFALL PIPES." REQUEST THAT MAINE DEP ALLOW REDUCTION OF "VEGETATIVE FILTER STRIP" OF 25' LENGTH BETWEEN RIP-RAP OUTFALL AND RESOURCE TO 0' LENGTH. WATER DISCHARGED FROM OUTFALL WILL INCLUDE GROUNDWATER, ROOF WATER, AND SURFACE WATER THAT FLOWS THROUGH A SOIL FILTER MEDIA. EXISTING OVER-LAND RUNOFF AT THIS LOCATION IS ERODING A SWALE AND DIRECTLY ENTERING RESOURCE. PROPOSED SOLUTION PROVIDES A NET ENVIRONMENTAL QUALITY ENHANCEMENT.



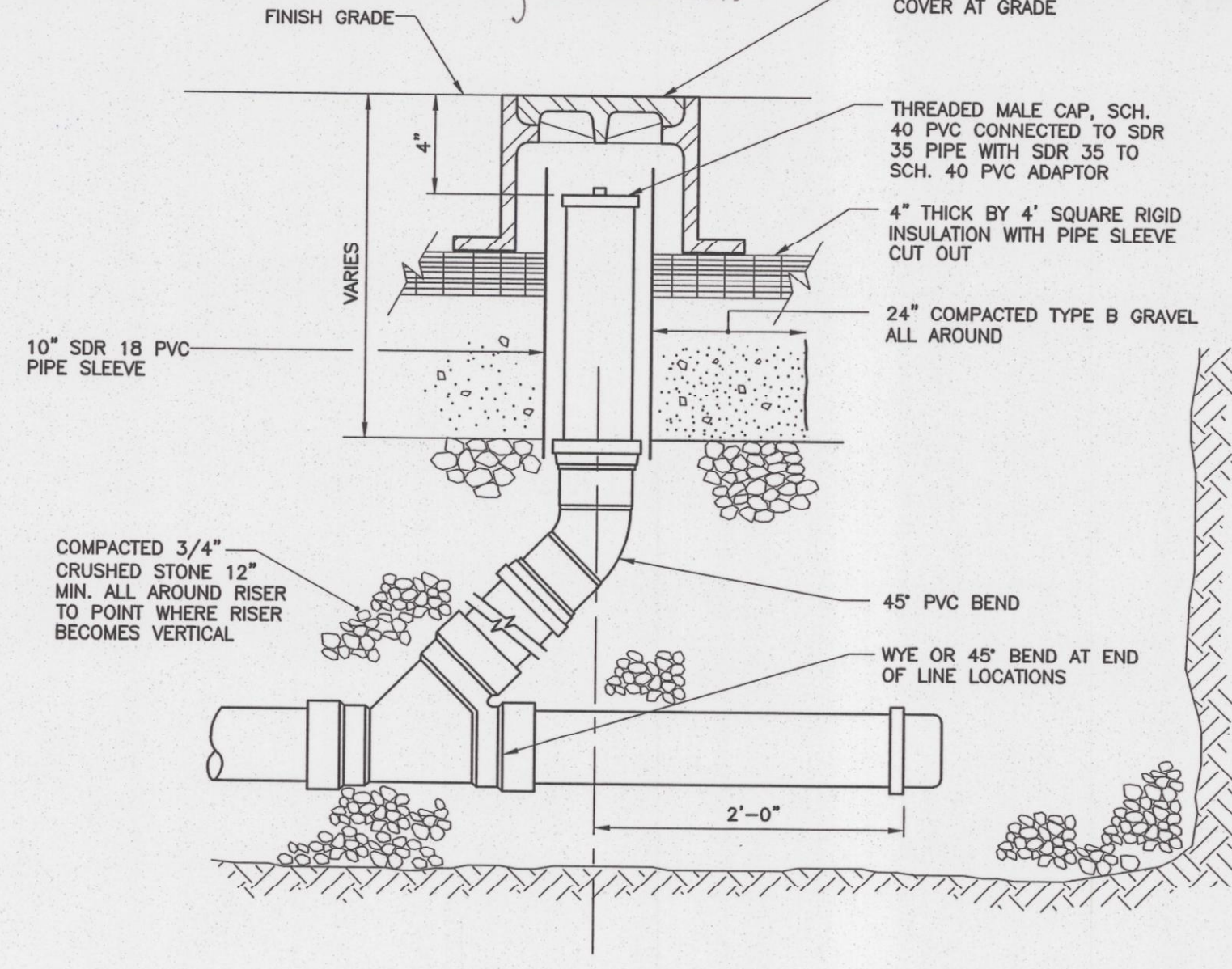
SITE PLAN



DETAIL SECTION 1 (10" PVC UD, PERF. UP) &
 DETAIL SECTION 2 (6" PVC UD, PERF. DOWN)
 N.T.S.



DETAIL SECTION 3
 N.T.S.

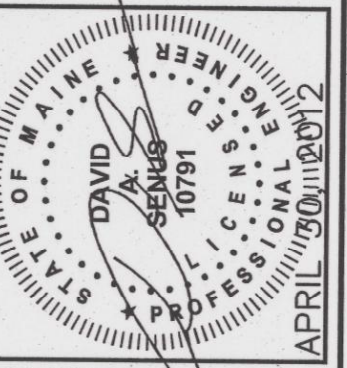


CLEANOUT DETAIL
 N.T.S.

41 Hutchins Drive
 Portland, Maine 04102
 800.426.4562 | www.woodardcurran.com

COMMITMENT & INTEGRITY DRIVE RESULTS

THIS DOCUMENT IS THE PROPERTY OF WOODARD & CURRAN INC. AND ITS CLIENT. REPRODUCTION OR MODIFICATION WITHOUT WRITTEN PERMISSION IS PROHIBITED.



REV	DESCRIPTION	DATE
DESIGNED BY: DAS	CHECKED BY: DAS	
DRAWN BY: BCK	222804.85 PRELIM CONCEPT	

PHASE II CONCEPT DESIGN

CITY OF PORTLAND
 PORTLAND, MAINE

WINDING WAY

JOB NO.: 222804.85
 DATE: APRIL 2012
 SCALE: AS NOTED
 SHEET: 1 OF 1

FIG-01

Z:\222804 - Portland-Gen. Eng. Services\wp_185 Winding Way\DWG\222804.85 Prelim Concept\wp_185 Winding Way.dwg, Apr. 30, 2012, 3:14pm

CONCEPT DESIGN - NOT FOR CONSTRUCTION