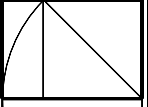




MAINE ORTHOPAEDICS CENTER
1601 CONGRESS ST.

WHIPPLE
CALLENDER
ARCHITECTS

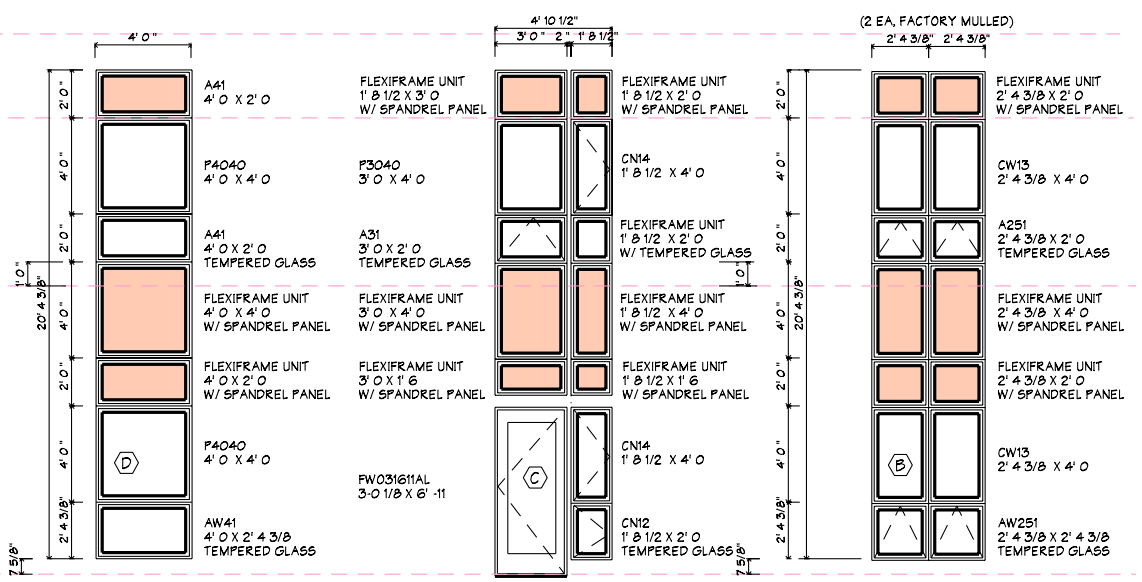
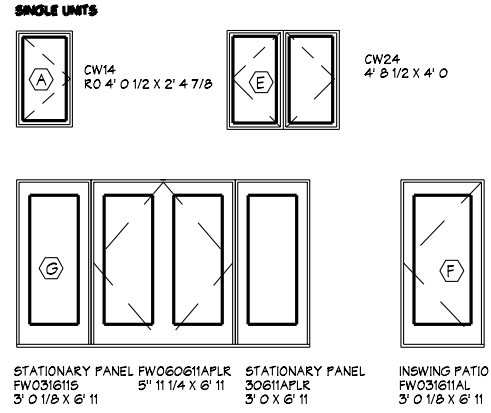


551 CONGRESS
STREET
PORTLAND
ME 04101
775-2886

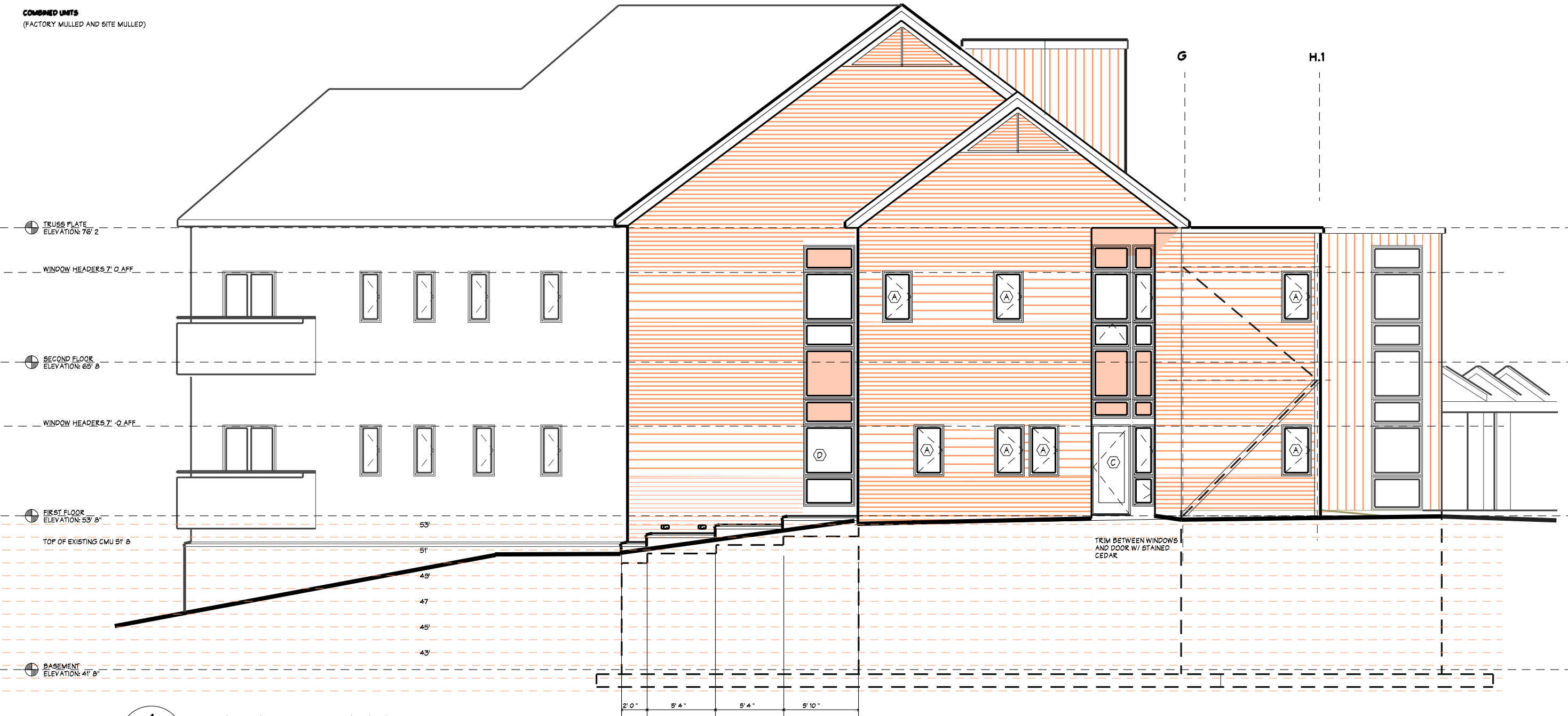
DATE 10/10/04
PROJECT NUMBER
SCALE 1/4" OR 1/8"
DRAWN JWW
CHECKED
REVISED
CONTENTS
WEST ELEVATION

SHEET of
AG

WINDOW SCHEDULE NOTES
ALL GLASS IS DOUBLE INSULATED LOW E TEMPERED WHERE REQUIRED. UNITS ARE WHITE. HARDWARE IS WHITE. SCREENS ON ALL OPERABLE UNITS. FACTORY MULL WHERE POSSIBLE.



COMBINED UNITS
(FACTORY MULLED AND SITE MULLED)



1 SOUTH ELEVATION
A5