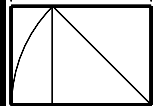




MAINE ORTHOPAEDICS CENTER
1601 CONGRESS ST.

WHIPPLE
CALLENDER
ARCHITECTS



551 CONGRESS
STREET
PORTLAND
ME 04101
775-2696

DATE 10/1/04

PROJECT
NUMBER

SCALE 1/8" or 1/4"

DRAWN JWW

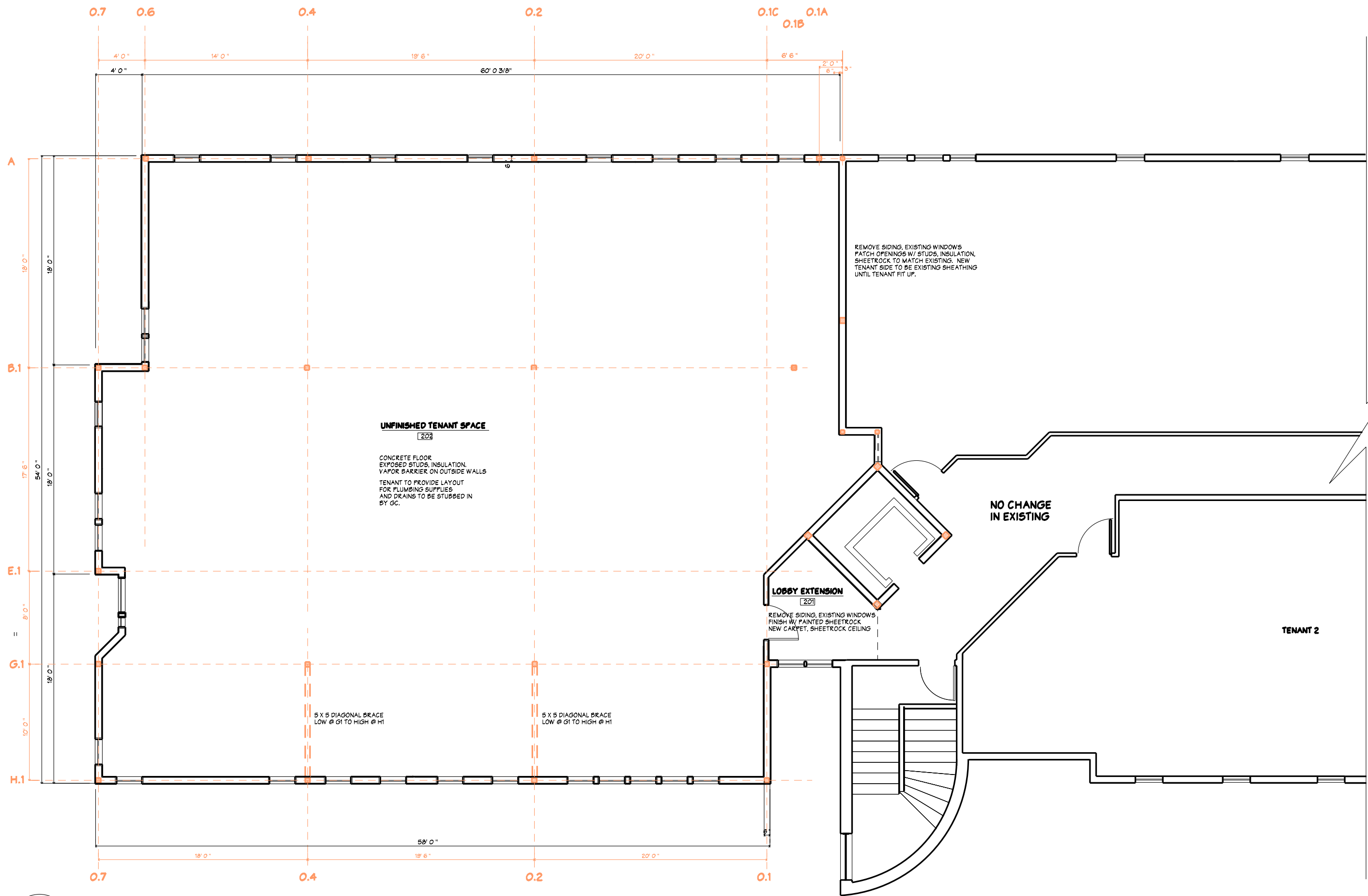
CHECKED

REVISED

CONTENTS
SECOND
FLOOR
PLAN

SHEET of

A3



1 PROPOSED SECOND FLOOR PLAN
A3 1/4" = 1'