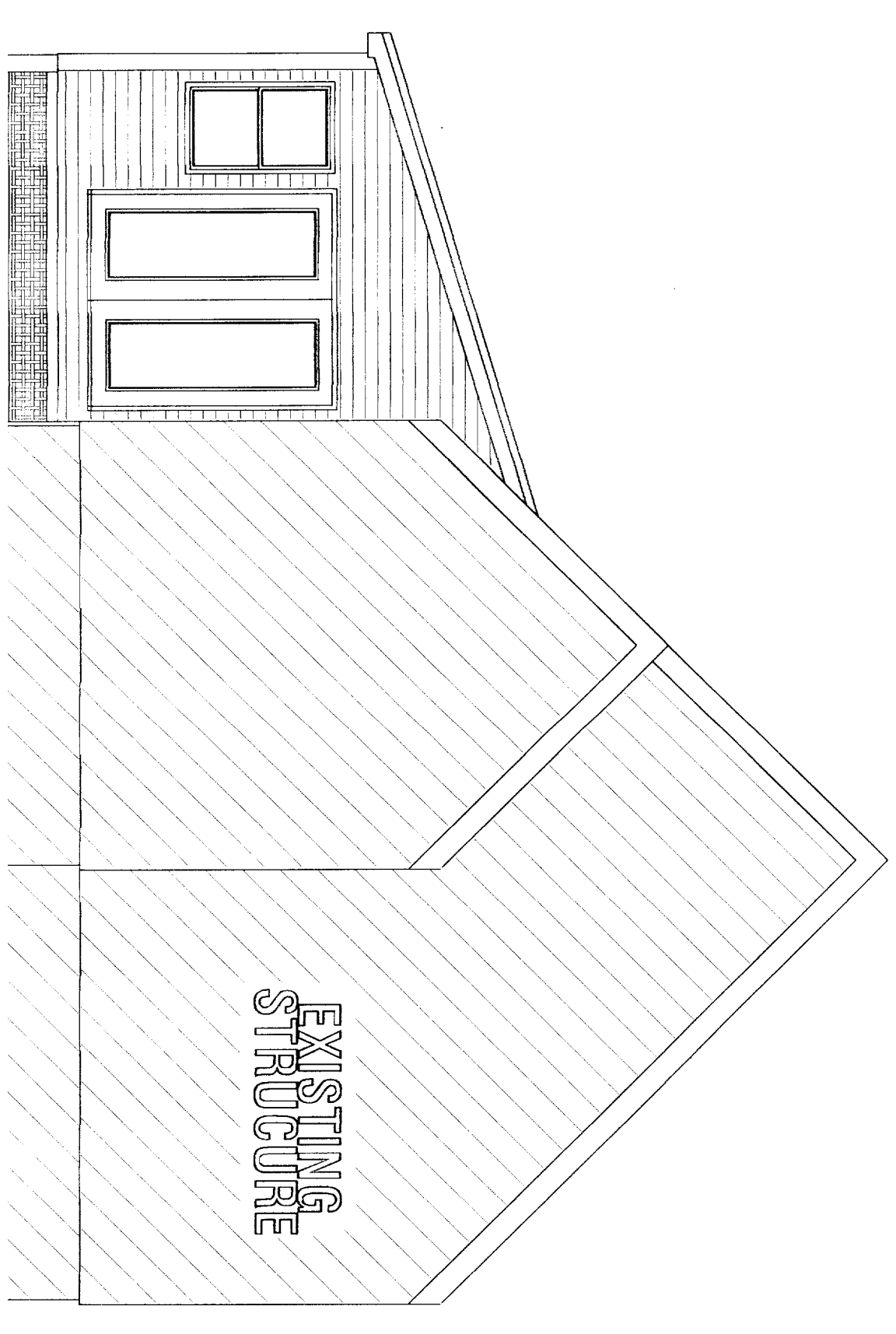


WEST ELEVATION

DEPT. OF BUILDING INSPECTION  
CITY OF PORTLAND, ME  
MAY 18 2005  
RECEIVED



EAST ELEVATION

DEPT. OF BUILDING INSPECTION  
CITY OF PORTLAND, ME  
MAY 18 2005  
RECEIVED



- NOTES:
- MAIN CARRIER 3 / 2X10
  - FLOOR JOIST 2X10
  - STUDS 2X6
  - COLLAR TIES 2X6
  - RAFTERS 2X10
  - HEADERS W/PLU. ~~2X6~~ 2X8 ✓
  - VINYL EXTERIOR
  - DRYUALL INTERIOR

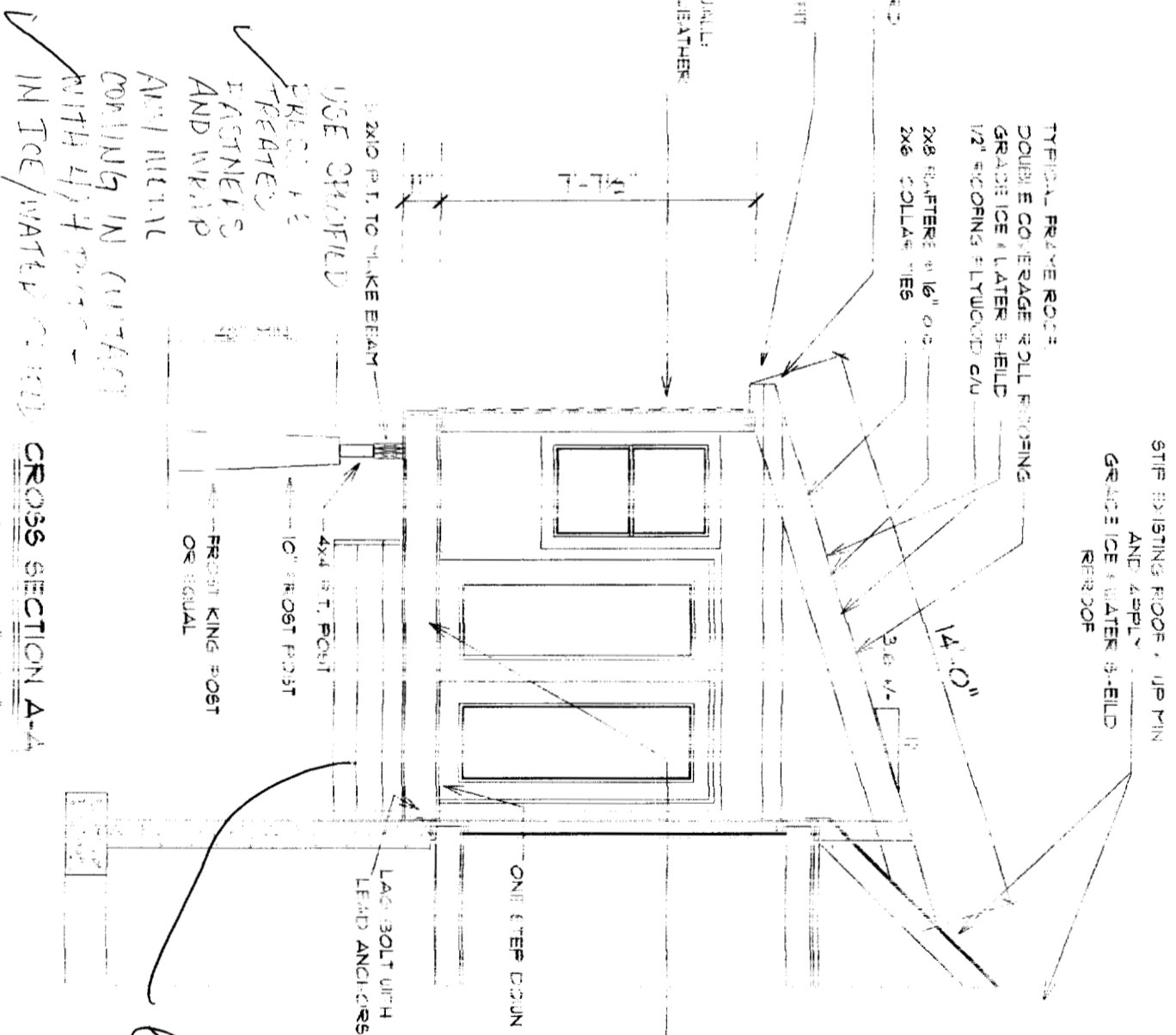
TYPICAL 2X6 S.D.S. EXTERIOR WALL.  
 VINYL CLADDING 4" INS. THE WEATHER  
 RES. ADVANTAGE SHEATHING  
 2X6 STUDS @ 16" O.C.  
 FIB BATT INSULATION  
 2X6 BAR OR EQUAL  
 2" ALL PURPOSE  
 1/2" DRYUALL  
 TAPED AND SANDED

1/2" SPCA  
 1/2" SHADOW BOARD  
 METAL UNFINISHED  
 8" OVERHANG  
 VINYL VENERED SHEET

TYPICAL RAFTER ROOF:  
 DOUBLE COVERAGE ROLL ROOFING  
 GRADE ICE & WATER SHEILD  
 1/2" SPCORING #1 LYWOOD C/D

2X8 RAFTERS @ 16" O.C.  
 2X6 COLLAR TIES

STIP EXISTING ROOF - UP PIN  
 AND APPLY  
 GRADE ICE & WATER SHEILD  
 REFER TO



*existing studs  
 being re-used.*

DEPT. OF BUILDING INSPECTION  
 CITY OF PORTLAND, ME  
 MAY 18 2005  
 RECEIVED

# FASTENING SCHEDULE

SCALE: 1" = 1'-0"

(SEE NOTES A + M FOR ALL FASTENING NOTES)

| CONNECTION                                                                      | FASTENING                                                                      | LOCATION          | NOTES                                  |
|---------------------------------------------------------------------------------|--------------------------------------------------------------------------------|-------------------|----------------------------------------|
| JOIST TO SILL OR GIRDER                                                         | 3 - 8d COMMON<br>3 - 3"x0.131" NAIL                                            | TOENAIL           |                                        |
| BRIDGING TO JOIST                                                               | 3 - 8d COMMON<br>3 - 3"x0.131" NAIL                                            | TOENAIL EACH END  |                                        |
| SOLE PLATE TO JOIST OR BLOCKING                                                 | 16d @ 16" OC<br>3"x0.131" NAIL @ 8" OC<br>3" 14 GAUGE STAPLE @ 12" OC          | TYPICAL FACE NAIL |                                        |
| SOLE PLATE TO JOIST OR BLOCKING AT BRACED WALL PANEL                            | 16d @ 16" OC<br>3"x0.131" NAIL @ 16" OC<br>3" 14 GAUGE STAPLE @ 12" OC         | BRACED WALL PANEL |                                        |
| TOP PLATE TO STUD                                                               | 3 - 16d COMMON<br>3 - 1"x0.131" NAIL<br>3 - 14 GAUGE STAPLE                    | END NAIL          |                                        |
| STUD TO SOLE PLATE                                                              | 4 - 8d COMMON<br>4 - 3"x0.131" NAIL<br>3 - 3" 14 GAUGE STAPLE                  | TOE NAIL          |                                        |
| DOUBLE STUDS                                                                    | 16d @ 24" OC<br>3"x0.131" NAIL @ 8" OC<br>3" 14 GAUGE STAPLE @ 8" OC           | FACE NAIL         |                                        |
| DOUBLE TOP PLATES                                                               | 16d @ 16" OC<br>3"x0.131" NAIL @ 12" OC<br>3" 14 GAUGE STAPLE @ 12" OC         | TYPICAL FACE NAIL |                                        |
| DOUBLE TOP PLATES                                                               | 8 - 16d COMMON<br>12 - 3"x0.131" NAIL<br>3 - 3" 14 GAUGE STAPLE TYP. FACE NAIL | LAP SPLICE        |                                        |
| BLOCKING BETWEEN JOISTS OR RAFTERS TO TOP PLATE                                 | 3 - 8d COMMON<br>3 - 3"x0.131" NAIL<br>3 - 3" 14 GAUGE STAPLE                  | TOE NAIL          |                                        |
| RIM JOIST TO TOP PLATE                                                          | 8d @ 6" OC<br>3"x0.131" NAIL @ 6" OC<br>3" 14 GAUGE STAPLE @ 6" OC             | TOE NAIL          |                                        |
| TOP PLATES, LAPS AND INTERSECTIONS                                              | 2 - 16d COMMON<br>3 - 3"x0.131" NAIL<br>3 - 3" 14 GAUGE STAPLE                 | FACE NAIL         |                                        |
| CONTINUOUS HEADS 2 PCS                                                          | 16d COMMON                                                                     | 16" OC ALONG EDGE |                                        |
| CEILING JOISTS TO SOLE PLATE                                                    | 3 - 8d COMMON<br>5 - 3"x0.131" NAIL<br>5 - 3" 14 GAUGE STAPLE                  | TOE NAIL          |                                        |
| CONTINUOUS HEADER TO STUD                                                       | 4 - 8d COMMON                                                                  | TOENAIL           |                                        |
| CEILING JOISTS, LAPS OVER PARTITIONS (SEE SECT. 2308.10.4.1, TABLE 2308.10.4.1) | 3 - 16d COMMON MIN.<br>4 - 3"x0.131" NAIL<br>4 - 3" 14 GAUGE STAPLE            | FACE NAIL         | COMMON NAIL - REF TO TABLE 2308.10.4.1 |
| CEILING JOISTS TO PARALLEL RAFTERS (SEE SECT. 2308.10.4.1, TABLE 2308.10.4.1)   | 3 - 16d COMMON MINIMUM<br>4 - 3"x0.131" NAIL<br>4 - 3" 14 GAUGE STAPLE         | FACE NAIL         | COMMON NAIL - REF TO TABLE 2308.10.4.1 |

LETTER: A NOTE: COMMON BOX NAILS ARE PERMITTED TO BE USED EXCEPT WHERE OTHERWISE INDICATED

B NAILS SPACED AT 6 INCHES ON CENTER AT EDGES, 12 INCHES AT INTERMEDIATE SUPPORTS EXCEPT AT SUPPORTS WHERE SPANS ARE 48 INCHES OR MORE FOR NAILING OF WOOD STRUCTURAL PANEL AND PARTICLEBOARD DIAGRAMS AND SHEAR WALLS. REFER TO SECTION 2305. NAILS FOR WALL SHEATHING ARE PERMITTED TO BE COMMON, BOX OR CASING

C COMMON OR DEFORMED SHANK

D DEFORMED SHANK

E CORROSION-RESISTANT SIDING OR CASING NAIL

F FASTENERS SPACED 3 INCHES OC AT EXTERIOR EDGES AND 6 INCHES OC AT INTERMEDIATE SUPPORTS

G CORROSION-RESISTANT ROOFING NAILS W/ 7/16 INCH DIA. HEAD & 1-1/2 INCH LENGTH

H FOR 1/2 INCH SHEATHING & 1-3/4 INCH LENGTH FOR 25/32 INCH SHEATHING

I CORROSION-RESISTANT STAPLES WITH NOMINAL 7/16 INCH CROWN AND 1-1/8 INCH LENGTH FOR 1/2 INCH SHEATHING AND 1-1/2 INCH LENGTH FOR 25/32 INCH SHEATHING. PANEL SUPPORTS AT CASING OR FINISH NAILS SPACED 6 INCHES ON PANEL EDGES, 12 INCHES AT INTERMEDIATE SUPPORTS

J PANEL SUPPORTS AT 24 INCHES. CASING OR FINISH NAILS SPACED 6 INCHES ON PANEL EDGES, 12 INCHES AT INTERMEDIATE SUPPORTS

K FOR ROOF SHEATHING APPLICATIONS, 8d NAILS ARE MINIMUM REQUIRED FOR WOOD STRUCTURAL PANELS

L STAPLES SHALL HAVE A MINIMUM CROWN WIDTH OF 7/16 INCH

M FOR ROOF SHEATHING APPLICATIONS, FASTENERS SPACED 4 INCHES ON CENTER AT EDGES, 8 INCHES AT INTERMEDIATE SUPPORTS FOR SUBFLOOR AND WALL SHEATHING AND 3 INCHES OC AT EDGES, 6 INCHES AT INTERMEDIATE SUPPORTS FOR ROOF SHEATHING.

N FASTENERS SPACED 4 INCHES OC AT EDGES, 8 INCHES AT INTERMEDIATE

O

P

| CONNECTION                                                               | FASTENING                                                                   | LOCATION                                                      | NOTES |
|--------------------------------------------------------------------------|-----------------------------------------------------------------------------|---------------------------------------------------------------|-------|
| RAFTER TO PLATE (SEE SECT. 2308.10.1, TABLE 2308.10.1)                   | 3 - 8d COMMON<br>3 - 3"x0.131" NAIL<br>3 - 3" 14 GAUGE STAPLE               | TOENAIL                                                       |       |
| 1" DIAGONAL BRACE TO EACH STUD & PLATE                                   | 2 - 8d COMMON<br>2 - 3"x0.131" NAIL<br>2 - 3" 14 GAUGE STAPLE               | FACE NAIL                                                     |       |
| BUILT-UP CORNER STUDS                                                    | 16d COMMON<br>3"x0.131" NAIL<br>3" 14 GAUGE STAPLE                          | 24" OC<br>16" OC<br>16" OC                                    |       |
| BUILT-UP GIRDER & BEAMS                                                  | 20d COMMON 32" OC<br>3"x0.131" NAIL @ 24" OC<br>3" 14 GAUGE STAPLE @ 24" OC | FACE NAIL AT TOP & BOTTOM STAGGERED ON OPPOSITE SIDES         |       |
| BUILT-UP GIRDER & BEAMS                                                  | 2 - 20d COMMON<br>3 - 3"x0.131" NAIL<br>3 - 3" 14 GAUGE STAPLE              | FACE NAIL AT ENDS AT EACH SPLICE                              |       |
| COLLAR TIE TO RAFTER                                                     | 3 - 10d COMMON<br>4 - 3"x0.131" NAIL<br>4 - 3" 14 GAUGE STAPLE              | FACE NAIL                                                     |       |
| JACK RAFTERS TO HIP                                                      | 3 - 10d COMMON<br>4 - 3"x0.131" NAIL<br>4 - 3" 14 GAUGE STAPLE              | TOE NAIL                                                      |       |
| JACK RAFTERS TO HIP                                                      | 2 - 10d COMMON<br>3 - 3"x0.131" NAIL<br>3 - 3" 14 GAUGE STAPLE              | FACE NAIL                                                     |       |
| ROOF RAFTER TO 2-BY RIDGE BEAM                                           | 3 - 3"x0.131" NAIL<br>3 - 3" 14 GAUGE STAPLE                                | TOENAIL                                                       |       |
| ROOF RAFTER TO 2-BY RIDGE BEAM                                           | 2 - 16d COMMON<br>3 - 3"x0.131" NAIL<br>3 - 3" 14 GAUGE STAPLE              | FACE NAIL                                                     |       |
| JOIST TO BAND JOIST                                                      | 3 - 16d COMMON<br>5 - 3"x0.131" NAIL<br>5 - 3" 14 GAUGE STAPLE              | FACE NAIL                                                     |       |
| LEDGER STRIP                                                             | 3 - 16d COMMON<br>4 - 3"x0.131" NAIL<br>4 - 3" 14 GAUGE STAPLE              | FACE NAIL                                                     |       |
| 1/2" OR LESS WOOD STRUCTURAL PANELS & PARTICLE BOARD                     | 2-3/8"x0.113" NAIL<br>1-3/4" 16 GAUGE                                       | SEE NOTE C, J<br>SEE NOTE N<br>SEE NOTE O                     |       |
| WOOD STRUCTURAL PANELS & PARTICLE BOARD                                  | 8d OR 6d<br>2-3/8"x0.113" NAIL<br>2" 16 GAUGE                               | 8d, SEE NOTE: D, 6d, SEE NOTE C<br>SEE NOTE: N<br>SEE NOTE: P |       |
| 3/4" OR LESS SINGLE FLOOR (COMBINATION SUBFLOOR-UNDERLAYMENT TO FRAMING) | 6d                                                                          | SEE NOTE: C                                                   |       |
| 1/2" OR LESS PANEL SIDING (TO FRAMING)                                   | 6d                                                                          | SEE NOTE: F                                                   |       |
| 5/8" PANEL SIDING (TO FRAMING)                                           | 8d                                                                          | SEE NOTE: F                                                   |       |

LETTER: I NOTE: CORROSION-RESISTANT STAPLES WITH NOMINAL 7/16 INCH CROWN AND 1-1/8 INCH LENGTH FOR 1/2 INCH SHEATHING AND 1-1/2 INCH LENGTH FOR 25/32 INCH SHEATHING. PANEL SUPPORTS AT CASING OR FINISH NAILS SPACED 6 INCHES ON PANEL EDGES, 12 INCHES AT INTERMEDIATE SUPPORTS

J FOR ROOF SHEATHING APPLICATIONS, 8d NAILS ARE MINIMUM REQUIRED FOR WOOD STRUCTURAL PANELS

K STAPLES SHALL HAVE A MINIMUM CROWN WIDTH OF 7/16 INCH

L FOR ROOF SHEATHING APPLICATIONS, FASTENERS SPACED 4 INCHES ON CENTER AT EDGES, 8 INCHES AT INTERMEDIATE SUPPORTS FOR SUBFLOOR AND WALL SHEATHING AND 3 INCHES OC AT EDGES, 6 INCHES AT INTERMEDIATE SUPPORTS FOR ROOF SHEATHING.

M FASTENERS SPACED 4 INCHES OC AT EDGES, 8 INCHES AT INTERMEDIATE

N

O

P

DEPT. OF BUILDING INSPECTION  
CITY OF PORTLAND, ME

MAY 18 2005

RECEIVED