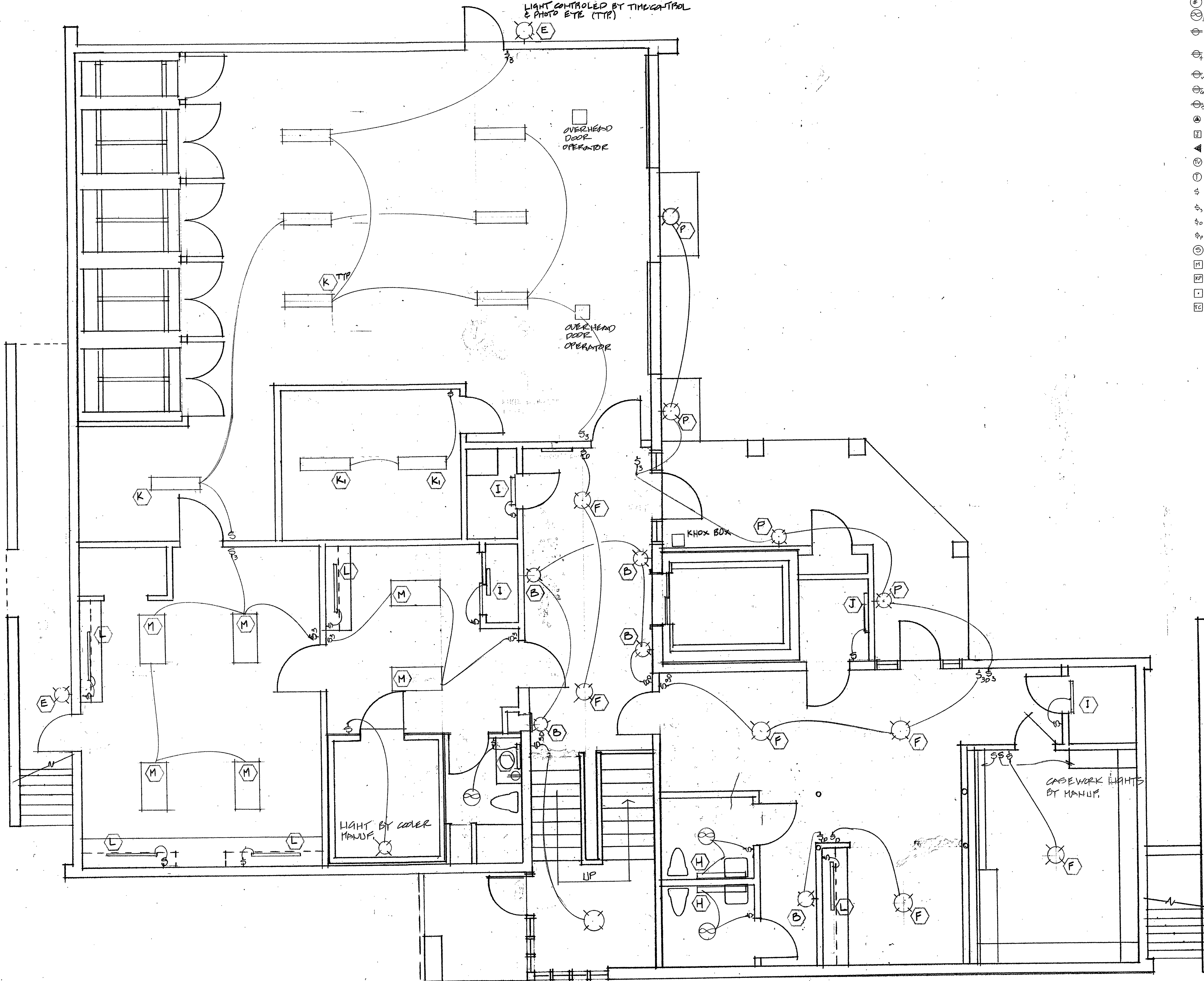


PROJECT NORTH



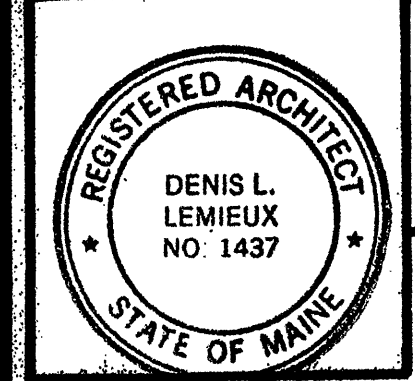
Electrical Legend

- | Mark | Description |
|------|--|
| ⊙ | Light Fixture - See Schedule |
| ⊙/⊙ | Light / Fan Combination Fixture |
| ⊙ | Duplex Receptacle - Mount 2'-0" AFF Unless noted otherwise |
| ⊙ | Quad Receptacle - Mount 2'-0" AFF Unless noted otherwise |
| ⊙ | Weatherproof Receptacle GFCI with cover |
| ⊙ | Ground Fault Receptacle |
| ⊙ | Split Wired Receptacle - See Diagram |
| ⊙ | Dedicated Outlet |
| ⊙ | Junction Box |
| ⊙ | Tel / Data outlet |
| ⊙ | Television Cable Outlet |
| ⊙ | Thermostat |
| ⊙ | Single Pole Wall Switch - Mount 3'-9" AFF |
| ⊙ | 3-Way Switch - Mount 3'-9" AFF |
| ⊙ | Switch with Dimmer - Mount 3'-9" AFF |
| ⊙ | Switch with Pilot Light - Mount 3'-9" AFF |
| ⊙ | Smoke Detector |
| ⊙ | Motion Detector |
| ⊙ | Key Pad |
| ⊙ | Door Bell |
| ⊙ | Time Clock |

99 Main Street, Suite - C, Lewiston, Maine 04240 (207) 344-6611 DLIAIA@ADL.COM

DLI Associates / Architects

No.	Revisions	Date	BY



Project Title
Hutchins Funeral Home
 660 Brighton Avenue
 Portland, Maine

Drawing Title
Lower Level Lighting Plan

Scale
 Dwn. By
 Ekd. By
 Date

Project No.
 Sub Title

Drawing No.
E-1.0

September 18, 2009
 Building Permit Submission
 Review and Approval
 NOT FOR CONSTRUCTION