

PROJECT NORTH

- CU-4
- CU-5
- CU-6

ROUTE REFRIGERATION PIPING TO CHASE ABOVE DEPT. 2 SIZES FOR MANUFACTURING



~~CLASSICAL~~

- MECHANICAL NOTES**
1. EXISTING GAS METER TO BE RELOCATED AS SHOWN UNLESS GAS COMPANY REDIRECTS.
 2. REUSE EXISTING EQUIPMENT PADS.
 3. ALL 3" COMBUSTION AIR INTAKE AIR FOR FURNACES WILL BE ROUTED UP THRU CHASE TO ROOF. COMBUSTION VENTS WILL BE CONCENTRIC.
 4. UNDERCUT OFFICE DOORS 5/8"
 5. AIR BALANCING DAMPERS REQUIRED ON ALL DIFFUSERS AND RETURNS.
 6. NO FLEXDUCT IN EXCESS OF 8' LONG RUNS.
 7. ALL SUPPLY AIR DUCT WILL BE WRAPPED.
 8. CONNECTION OF DUCTWORK TO EQUIPMENT WILL REQUIRE A FLEXIBLE CONNECTION

MECHANICAL SCHEDULE

UH-1 GAS UNIT HEATER EXHAUST THRU SIDEWALL (EXACT LOCATION TO SUIT VENTILATION CODE) 60,000 BTU

EF-1 PREP ROOM EXHAUST (ROOF MOUNTED) THE FAN WILL BE OPERATED BY A SWITCH

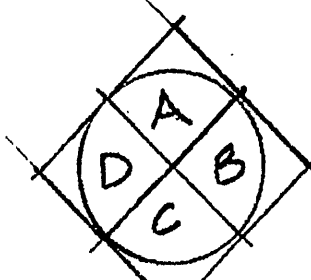
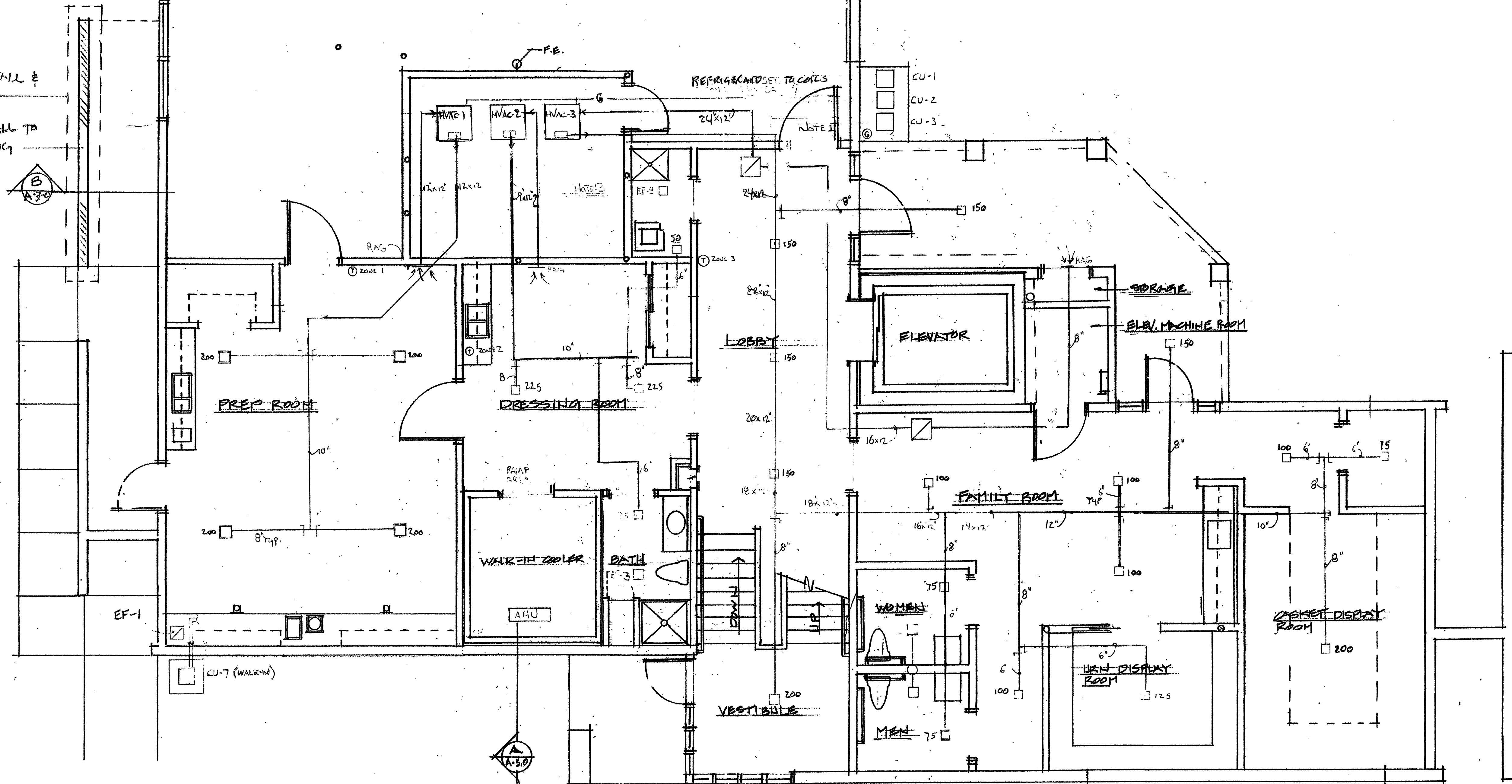
EF-2 ROOF MOUNTED EXHAUST FAN.

EF-3 BATHROOM EXHAUST FAN & JANITOR CLOSET.

- HVAC UNIT - 1 YORK 2 - TON GAS FIRED FURNACE WITH COIL 80 K BTU.
 HVAC UNIT - 2 YORK 1 1/2 - TON GAS FIRED FURNACE WITH COIL 80 K BTU.
 HVAC UNIT - 3 YORK 5 - TON GAS FIRED FURNACE WITH COIL 130 K BTU.
 HVAC UNIT - 4 YORK 5 - TON GAS FIRED FURNACE WITH COIL 130 K BTU.
 HVAC UNIT - 5 YORK 5 - TON GAS FIRED FURNACE WITH COIL 130 K BTU.
 HVAC UNIT - 6 YORK 5 - TON GAS FIRED FURNACE WITH COIL 130 K BTU.

NEW FROST WALL & FOOTING

NEW BRICK WALL TO MATCH EXISTING



INTERIOR ELEVATIONS

LL Associates / Architects 103 1/2 Street, Suite - C, Lewiston, Maine 04240 (207) 344-6611 DLATA@AOL.COM

No.	Revisions	Date	By

Project Title

Hutchins Funeral Home
 660 Brighton Avenue
 Portland, Maine

Drawing Title

Lower Level Floor Plans

Scale
 Dwn. By
 Ckd. By
 Date

Project No. 0813

Sub Title

Drawing No. M-1.0