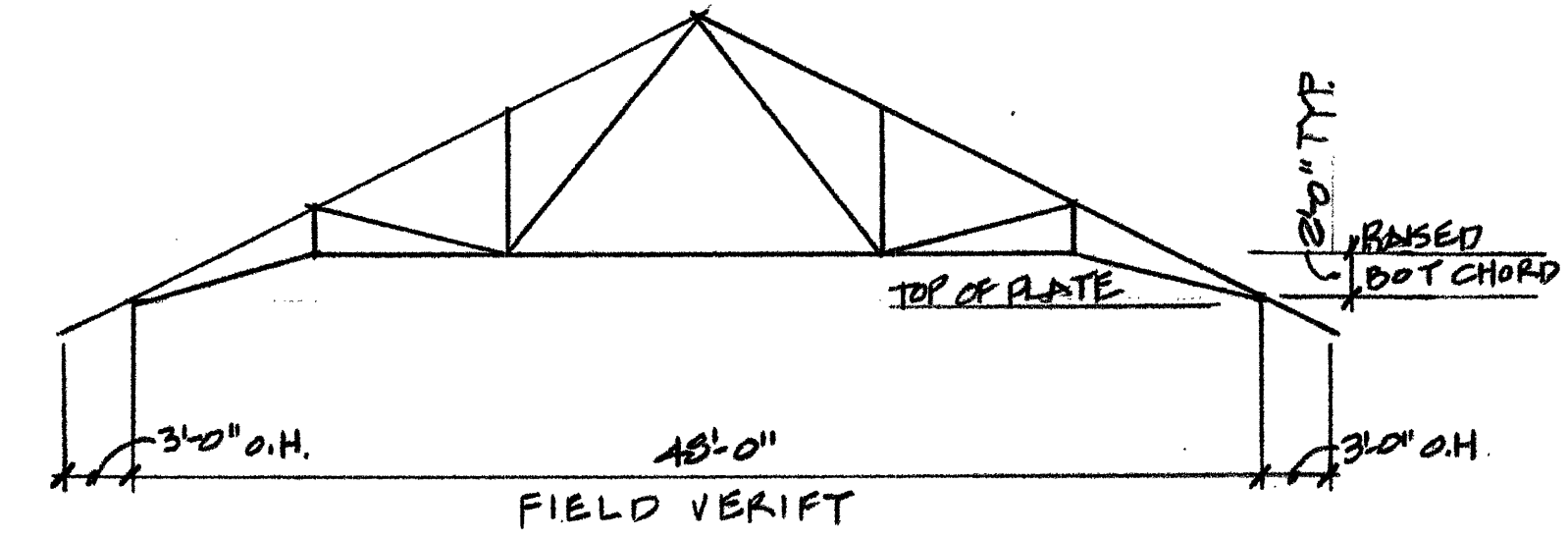


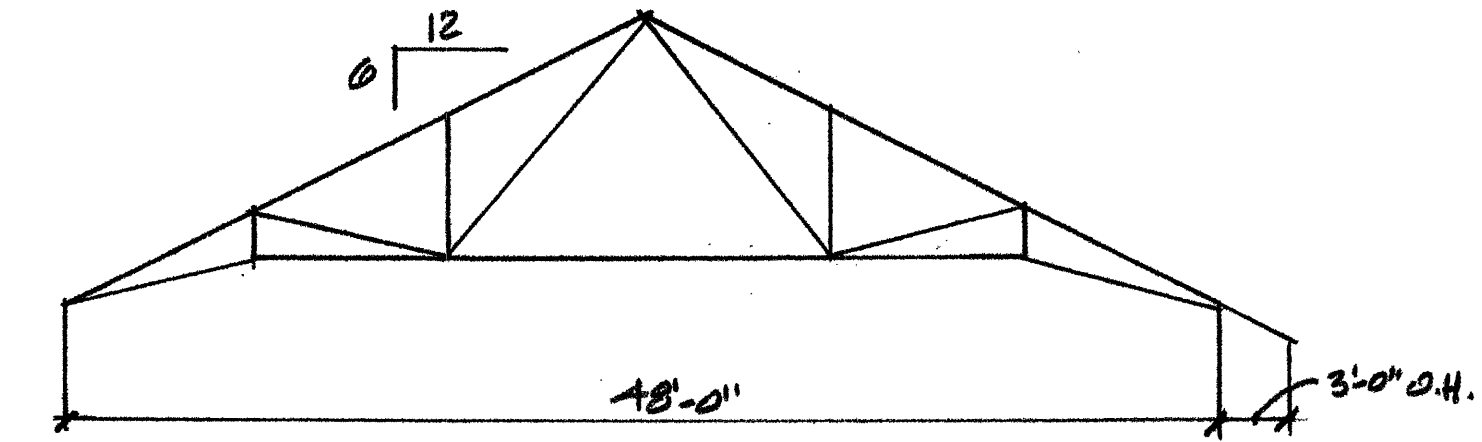
WOOD TRUSS NOTES

1. PERMANENT TRUSS BRACING SHALL BE INSTALLED PER T.P.I. RECOMMENDATIONS.
2. TRUSS SPACING AT 2'-0" O.C. MAX.
3. PROVIDE SIMPSON H2 HURRICANE TIES AT ALL TRUSS ENDS TO TOP PLATE CONNECTIONS.
4. TRUSS SHALL NOT BEAR LESS THAN FULL WIDTH OF NAILERS.
5. TOP AND RAISED BOTTOM CHORD TO BE 2 X 6 MEMBER.
6. GENERAL CONTRACTOR TO ENSURE THAT TRUSS AND BRACING INSTALLATION IS INSPECTED BY A QUALIFIED TECHNICAL REPRESENTATIVE FROM THE MANUFACTURING COMPANY TO VERIFY THAT ALL TRUSSES AND BRACING HAVE BEEN INSTALLED CORRECTLY AND IN ACCORDANCE WITH APPROVED SHOP DRAWINGS AND HIB-91 BRACING REQUIREMENTS. A REPORT OF ALL FINDINGS SHALL BE SUBMITTED TO THE ENGINEER OF RECORD FOR REVIEW AND APPROVAL PRIOR TO CLOSING IN SPACE.

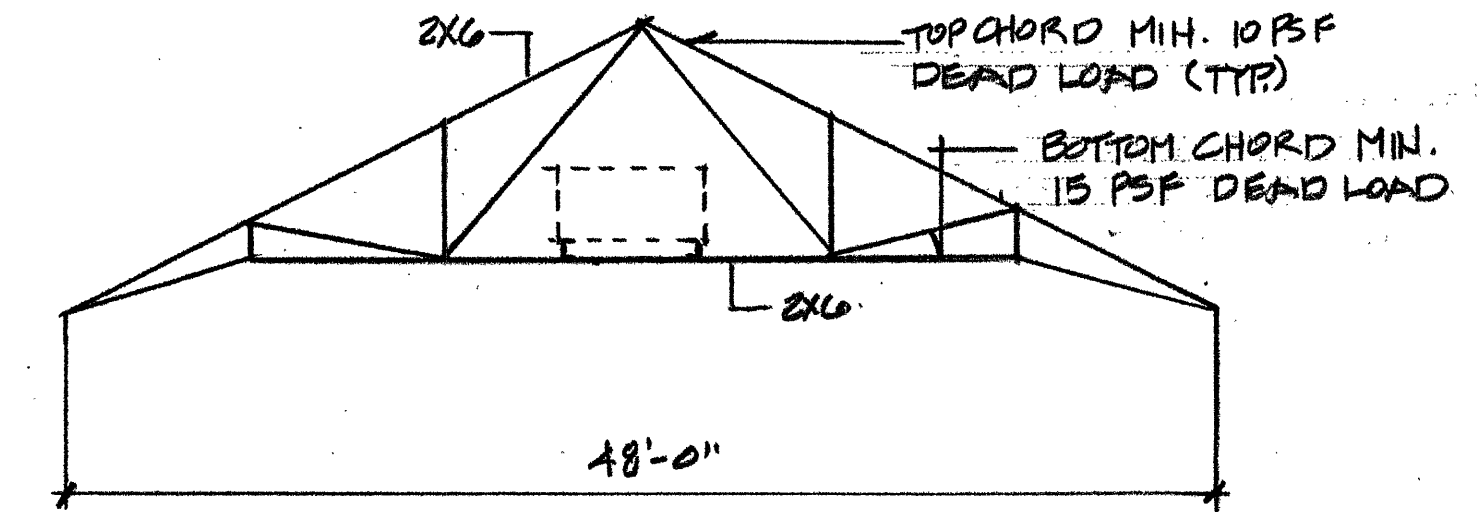
WOOD TRUSS LOADING COMBINATIONS		
Load Combination	Description	Notes
LC 1	DL + SNOW (UNIFORM)	1. UNBALANCED SNOW LOAD SHALL BE PLACED ON THE LEEWARD SIDE OF THE TRUSS, DEPENDING ON THE WIND DIRECTION.
LC 2	DL + SNOW (UNBALANCE) SEE NOTE NO. 1	2. DIRECTION OF LOAD (TOWARD OR AWAY FROM MEMBERS) SHALL BE REVERSED WHEN WIND DIRECTION IS REVERSED.
LC 3	DL + SNOW (UNBALANCED) + WIND SEE NOTE NO. 2	3. DISTRIBUTED LOADS SHOWN ON TRUSS MEMBERS ARE BASED ON A TRUSS SPACING OF 2'-0" ON CENTER. LOADS SHALL BE ADJUSTED IF ALTERNATE SPACING IS USED.
LC 4	0.8 DL + WIND SEE NOTE NO. 2	4. DL - DEAD LOAD NOT INCLUDING SELF - WEIGHT.



TRUSS TYPE-1

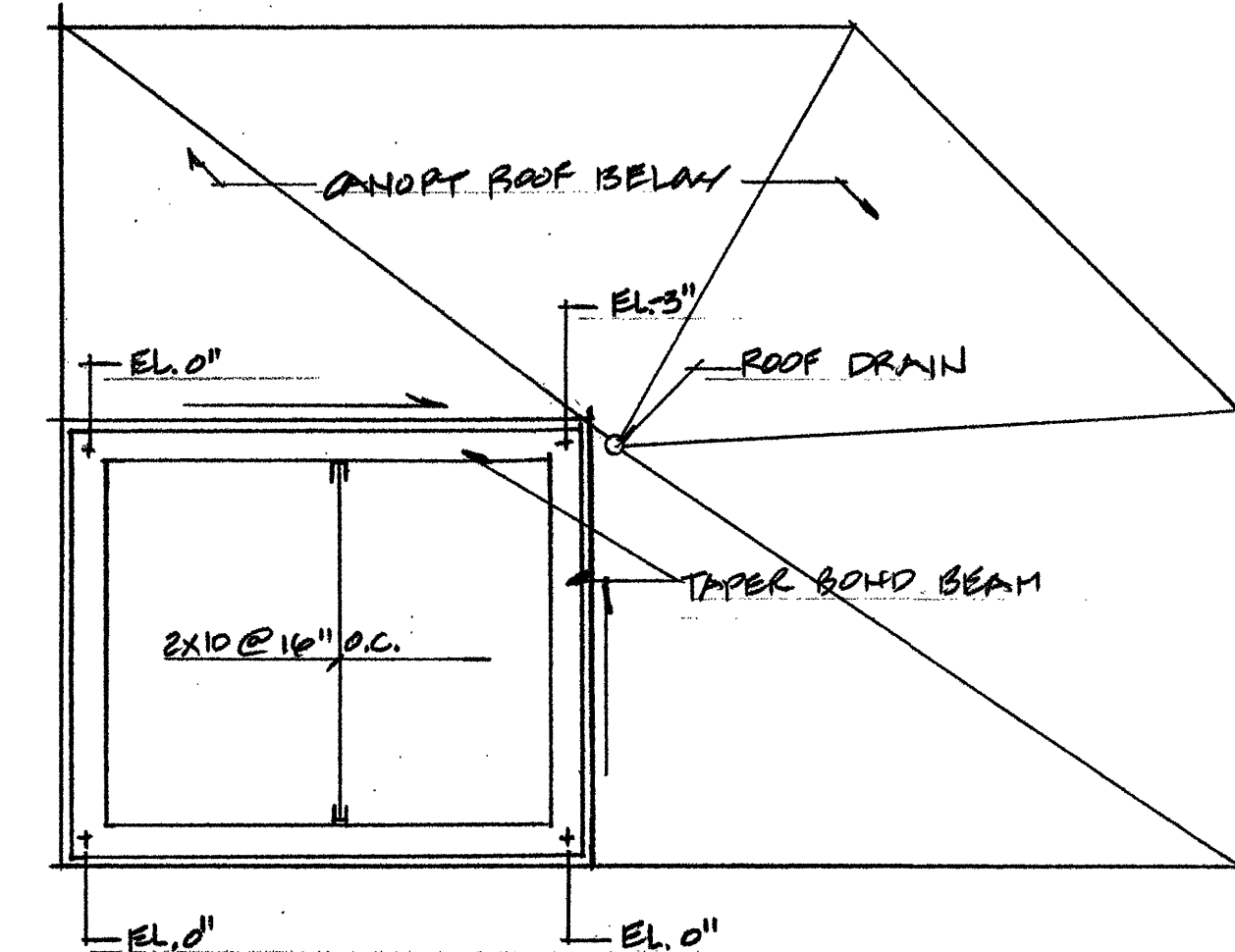
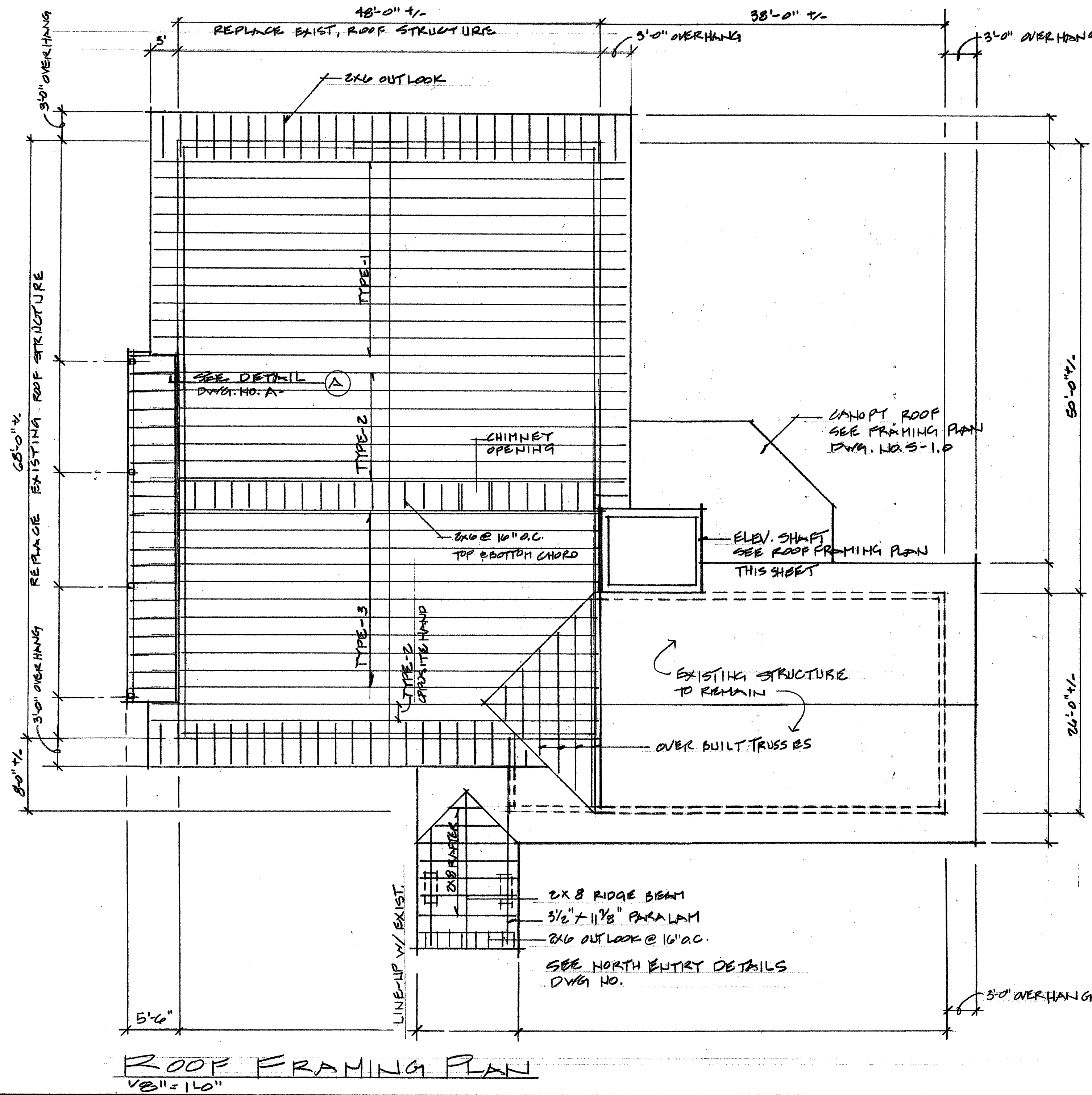


TRUSS TYPE-2



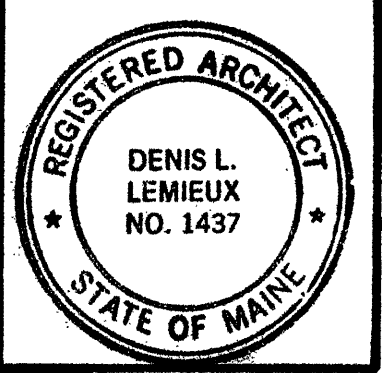
TRUSS TYPE-3

PROVIDE FOR MECHANICAL DEAD LOAD - 2 AIR HANDLERS SPANNING 6 TRUSSES.
COORDINATE LOCATION & WEIGHTS W/ MECHANICAL DESIGN - BUILD CONTRACTOR



ELEVATOR SHAFT ROOF FRAMING
1/4" x 15"

No.	Revisions	Date	By



Project Title
Hutchins Funeral Home
660 Brighton Avenue
Portland, Maine

Drawing Title
Roof Framing Plan & Details

Project No.
0813

Sub Title

Drawing No.
S-2.0

198 Main Street, Suite - C Lewiston, Maine 04240 (207) 344-6611 DLLAIA@AOL.COM

DLL Associates / Architects

September 18, 2009
Building Permit Submission
Review and Approval
NOT FOR CONSTRUCTION