

**Code Compliance Summary**

**Building Design Codes:**  
 Maine Human Right Act (ADA)  
 International Building Code IBC  
 NFPA 101 Life Safety Code  
 State of Maine Plumbing Code  
 ASHRAE / IES Standard 90.1  
 National Electric Code

**Use Group Classifications:**  
 IBC: Assembly Group A-3  
 Business Group B  
 Storage Group S-2  
 NFPA: Assembly Chapter 12  
 Business Chapter 38  
 Storage Chapter 42

**Construction Type**  
 IBC: Type V-B  
 NFPA: Type V (000)

**Building Heights and Areas**  
 IBC: Group A-3  
 Height in feet 40  
 Height in stories 1  
 Allowable Area 6000 sq.ft.

**Automatic Sprinkler Increase**  
 IBC: One story or 20 foot increase  
 Local Ordinance Height Limit: 45 feet

**Building Area**  
 Lower Level: 4528 sq. ft.  
 Upper Level: 4463 sq. ft.

**Fire Suppression**  
 Fully Sprinkled with Supervised System

**Means of Egress**  
 Common Path of Travel: 20 feet  
 Maximum Travel Distance:  
 Dead End Corridors: 20 feet

**Fire Resistance Ratings:**  
 Elevator Shaft: 1 Hour  
 Mechanical Room Walls: 1 Hour  
 Parlor Room Walls: 1 Hour  
 Garage / Storage Ceiling: 1 Hour

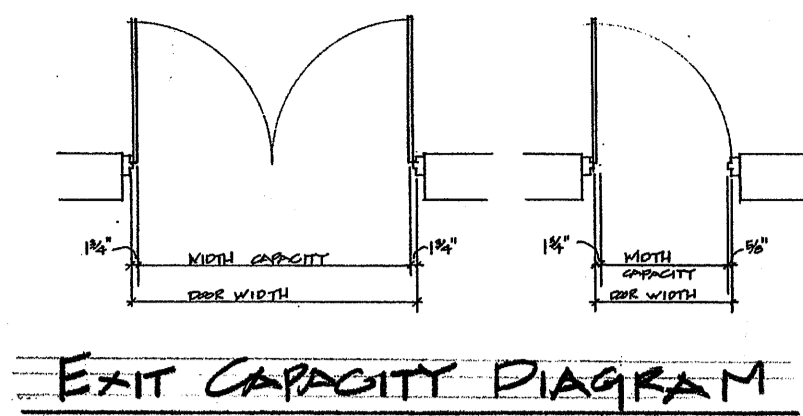
**Summary:**  
 In general the existing structure is in compliance with the current IBC standards for Type V-B or NFPA Type V (000) construction. The areas of deficiencies are as follows:  
 Exit doors are required to have push-type panic hardware. The existing exit doors do not have panic hardware.  
 The building is required to have a full fire alarm system and fully sprinkled with supervised system.

**ADA Code Review**

**Path of Travel:**  
 An accessible path of travel must be provided from the designated handicap parking spaces (both visitor and employees) to the building, through the entrances and throughout normally occupied spaces within the building.

**Parking:**  
 Properly sized and marked handicap parking spaces should be provided for both visitors and employees.

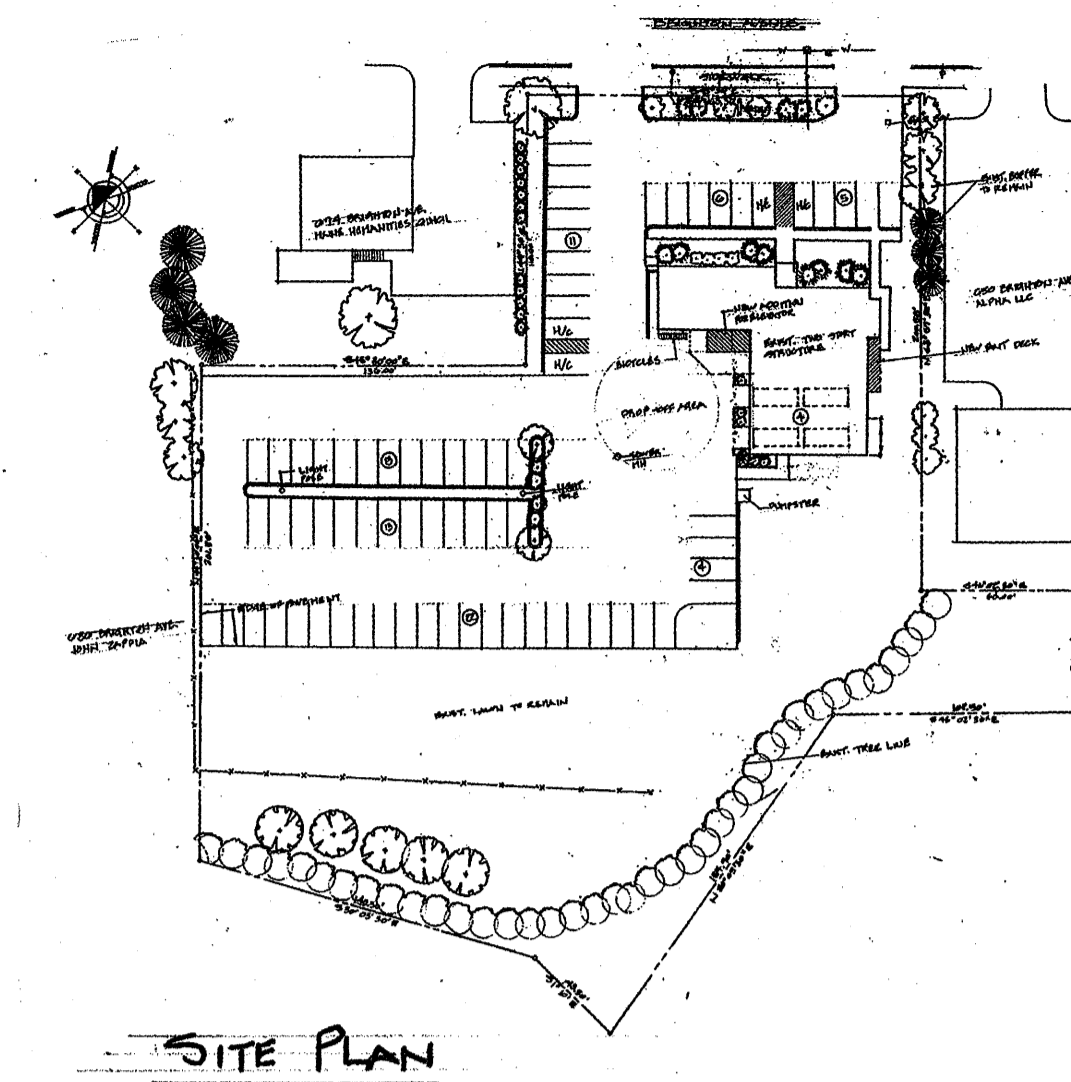
**Access to Entrances:**  
 Walkways from designated handicap parking spaces to the building should be accessible per ADA standards. The walkways from visitors parking at the front entrance cannot be used by wheelchair clients. The main entrance will be from the parking lot in the back of the building which will be accessible to wheelchair clients.



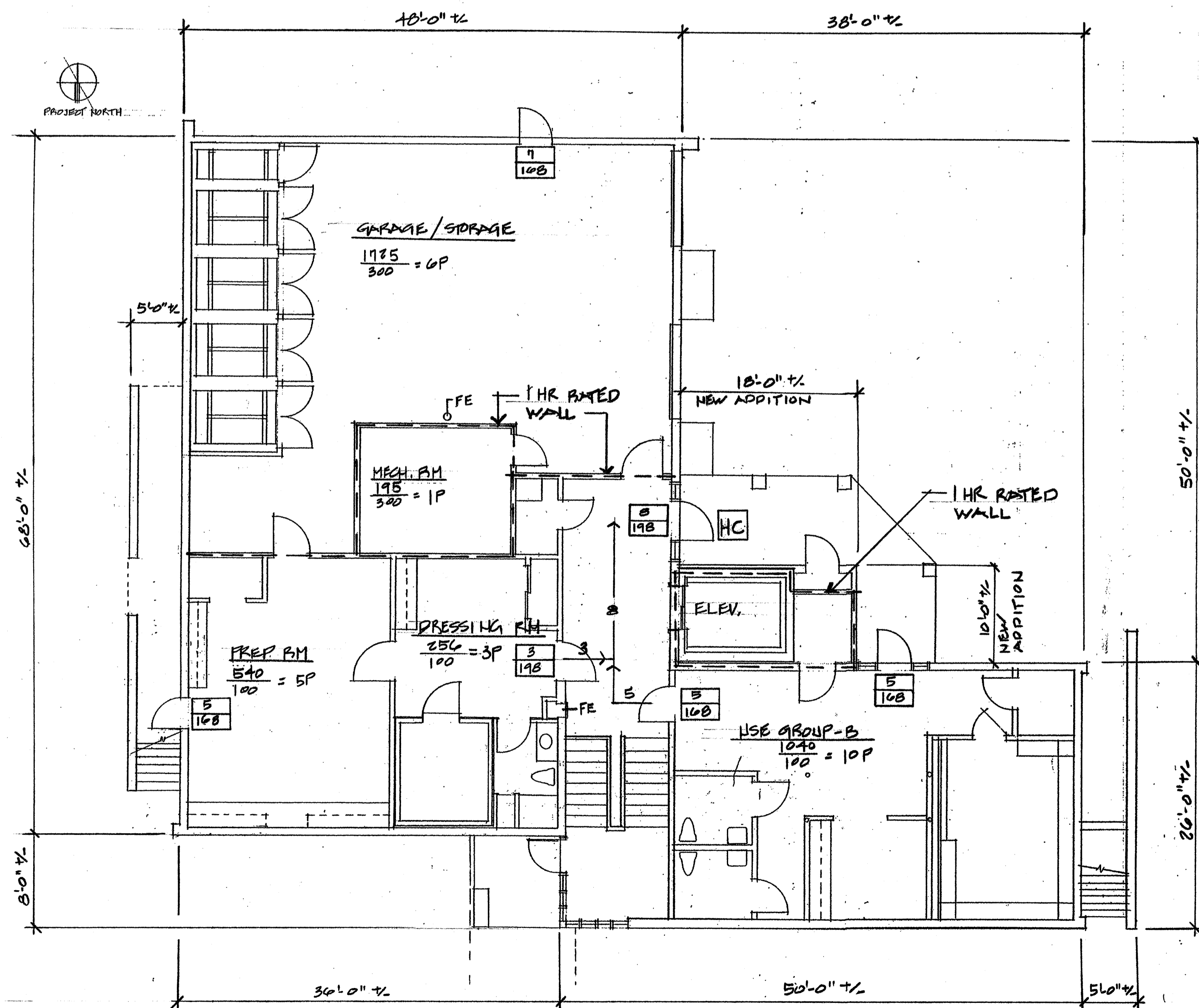
Occupant Load Analysis				
DESCRIPTION	ROOM NO.	SF / OCC	SQUARE FOOT	OCC.
General Storage, Garage, Mechanical Room, Janitor	L-3, L-4, L-13, L-14, L-15	300	1920	6
Procedure Rooms, General Business Office, Lobby	L-1, L-2, L-5, L-7, L-8, L-10, L-12	100	2428	25
Parlors Assembly Space	U-4, U-5	7	1728	247
General Business Office, Lobby	U-1, U-2, U-6, U-7, U-8, U-9, U-11, U-12	100	2444	24
Equipment Storage	U-3	300	176	1

**LEGEND**

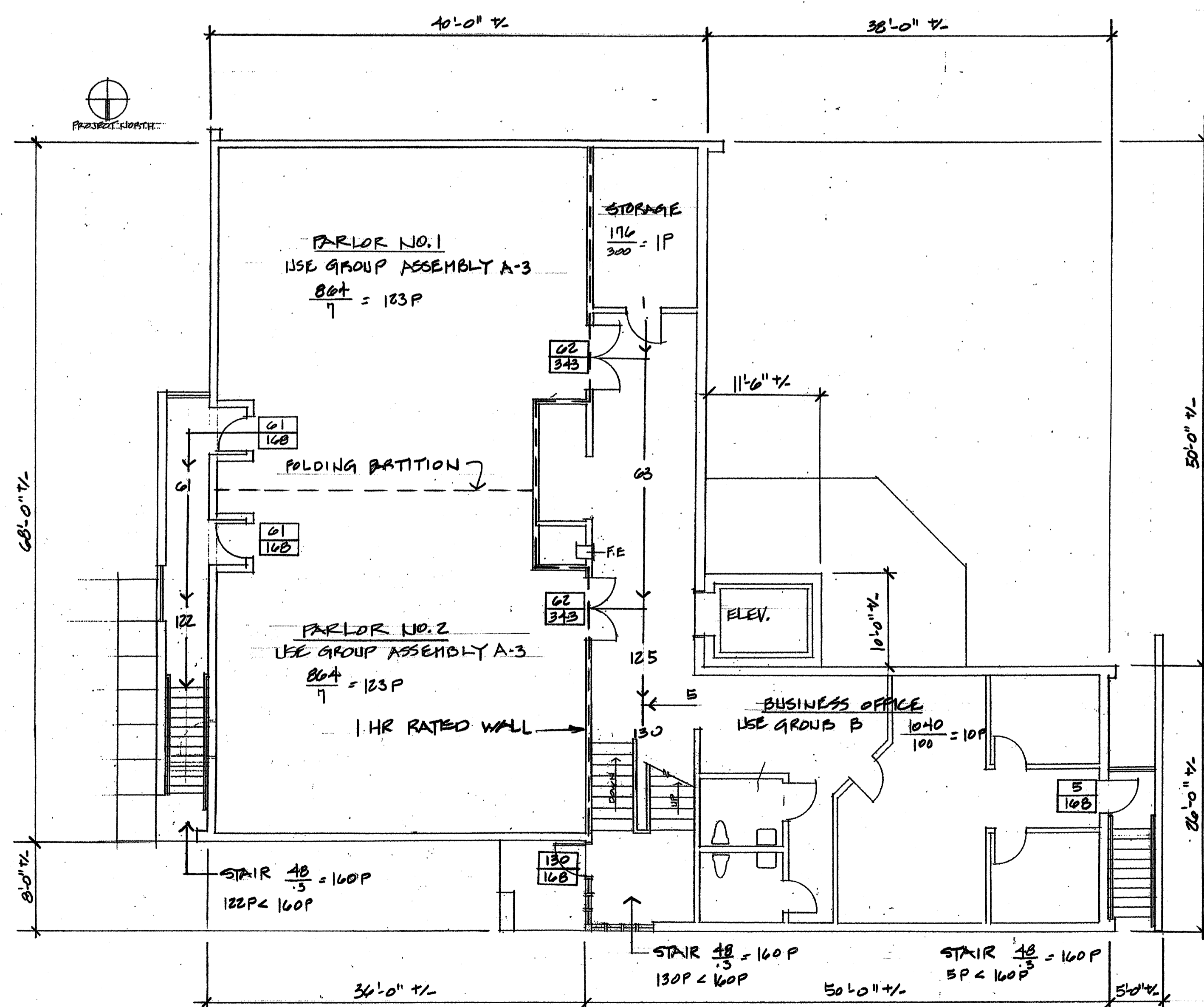
- EXIT CAPACITY  
 Actual Egress Capacity  
 Max. Allowable Capacity
- $\frac{0}{0} = OP$  ROOM OCCUPANCY LOAD  
 Area Gross Square Feet  
 Occupancy Load Factor
- $\rightarrow$  Direction / Load of Traffic to Exit
- Handicap Accessible Route
- FIRE EXTINGUISHER



NOTE: SEE DRAWING NO. ELS1 & ELS2 FOR ELECTRICAL LIFE SAFETY LAYOUT

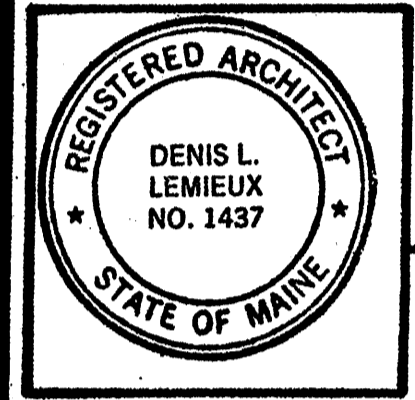


LOWER LEVEL CODE PLAN  
 1/8" = 1'-0"



UPPER LEVEL CODE PLAN  
 1/8" = 1'-0"

No.	Revisions	Date	By



Project Title  
**Hutchins Funeral Home**  
 660 Brighton Avenue  
 Portland, Maine

Drawing Title  
**Code Plan**

Project No.  
**0813**

Sub Title

Drawing No.  
**G-1**

Scale  
 Dwn. By  
 Ckd. By  
 Date

196 Main Street, Suite - C Lewiston, Maine 04240 (207) 344-6611 DLATA@AOL.COM  
 DILL Associates / Architects

September 18, 2009  
 Building Permit Submission  
 Review and Approval  
 NOT FOR CONSTRUCTION