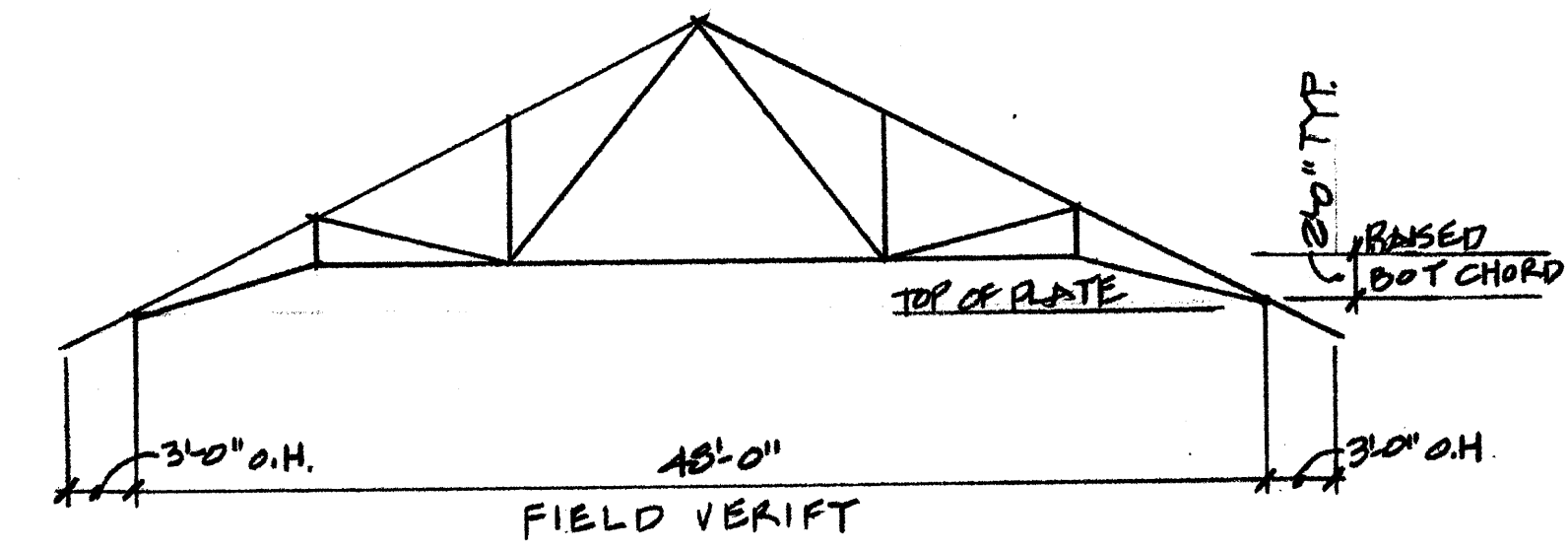
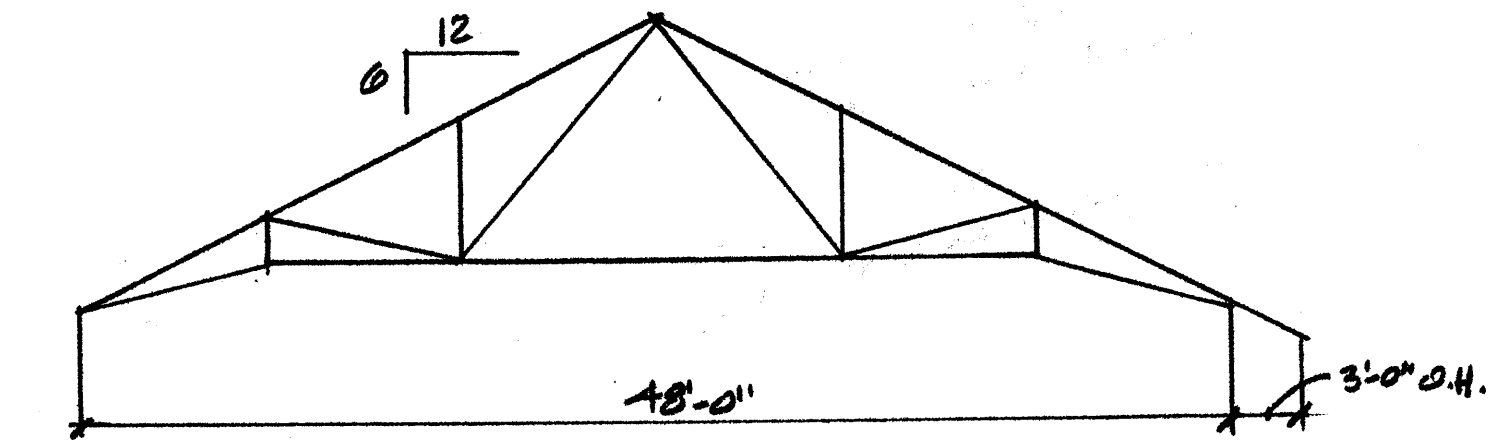


- WOOD TRUSS NOTES**
- PERMANENT TRUSS BRACING SHALL BE INSTALLED PER T.P.I. RECOMMENDATIONS.
 - TRUSS SPACING AT 2'-0" O.C. MAX.
 - PROVIDE SIMPSON HZ HURRICANE TIES AT ALL TRUSS ENDS TO TOP PLATE CONNECTIONS.
 - TRUSS SHALL NOT BEAR LESS THAN FULL WIDTH OF NAILERS.
 - TOP AND RAISED BOTTOM CHORD TO BE 2 X 6 MEMBER.
 - GENERAL CONTRACTOR TO ENSURE THAT TRUSS AND BRACING INSTALLATION IS INSPECTED BY A QUALIFIED TECHNICAL REPRESENTATIVE FROM THE MANUFACTURING COMPANY TO VERIFY THAT ALL TRUSSES AND BRACING HAVE BEEN INSTALLED CORRECTLY AND IN ACCORDANCE WITH APPROVED SHOP DRAWINGS AND TIB-91 BRACING REQUIREMENTS. A REPORT OF ALL FINDINGS SHALL BE SUBMITTED TO THE ENGINEER OF RECORD FOR REVIEW AND APPROVAL PRIOR TO CLOSING IN SPACE.

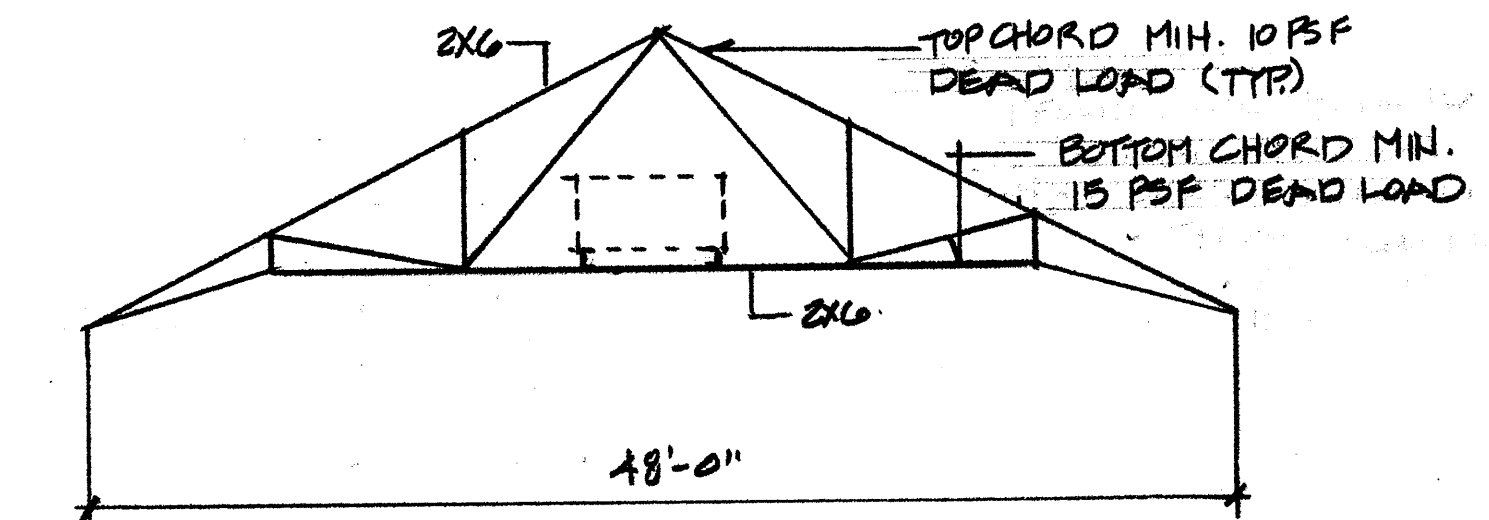
WOOD TRUSS LOADING COMBINATIONS		
Load Combination	Description	Notes
LC 1	DL + SNOW (UNIFORM)	1. UNBALANCED SNOW LOAD SHALL BE PLACED ON THE LEEWARD SIDE OF THE TRUSS, DEPENDING ON THE WIND DIRECTION.
LC 2	DL + SNOW (UNBALANCE) SEE NOTE NO. 1	2. DIRECTION OF LOAD (TOWARD OR AWAY FROM MEMBERS) SHALL BE REVERSED WHEN WIND DIRECTION IS REVERSED.
LC 3	DL + SNOW (UNBALANCED) + WIND SEE NOTE NO. 2	3. DISTRIBUTED LOADS SHOWN ON TRUSS MEMBERS ARE BASED ON A TRUSS SPACING OF 2'-0" ON CENTER. LOADS SHALL BE ADJUSTED IF ALTERNATE SPACING IS USED.
LC 4	0.8 DL + WIND SEE NOTE NO. 2	4. DL - DEAD LOAD NOT INCLUDING SELF - WEIGHT.



TRUSS TYPE-1

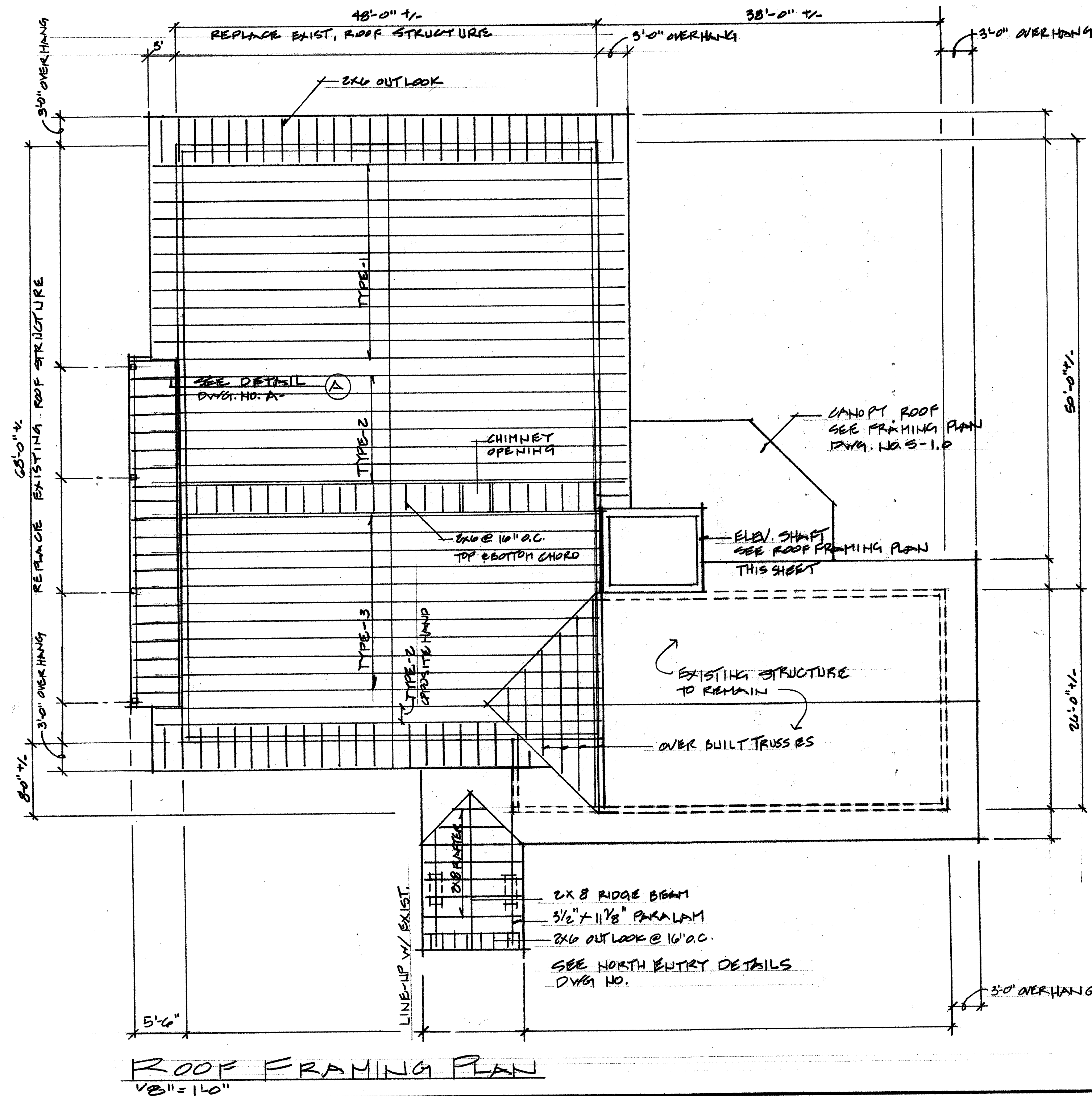


TRUSS TYPE-2

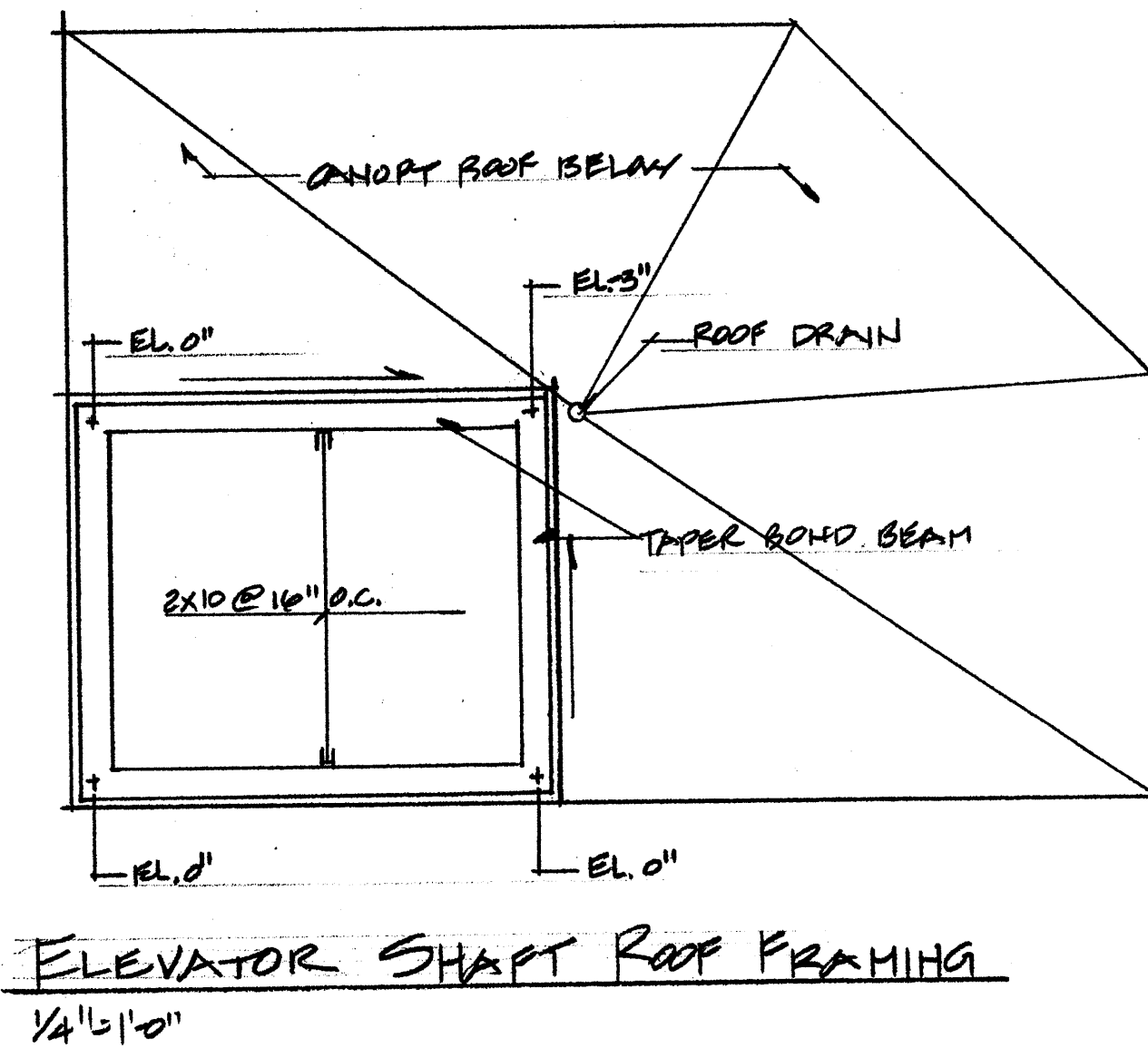


TRUSS TYPE-3

PROVIDE FOR MECHANICAL DEAD LOAD - 2 AIR HANDLERS SPANNING 6 TRUSSES.
COORDINATE LOCATION & WEIGHTS W/ MECHANICAL DESIGN - BUILD CONTRACTOR

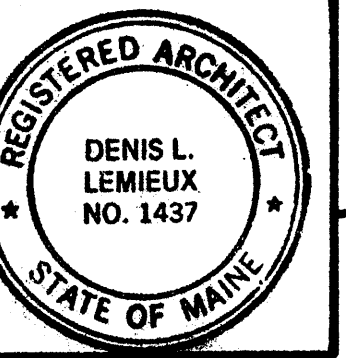


ROOF FRAMING PLAN
V8" = 1'-0"



ELEVATOR SHAFT ROOF FRAMING
1/4" = 1'-0"

No.	Revisions	Date	By



Project Title
Hutchins Funeral Home
660 Brighton Avenue
Portland, Maine

Drawing Title
Roof Framing Plan & Details

Project No.
0813

Sub Title

Drawing No.

S-2.0

DLL Associates / Architects | 198 Main Street, Suite - C | Lewiston, Maine 04240 | (207) 344-6611 | DLLATA@AOL.COM

October 28, 2009
Issued for Construction