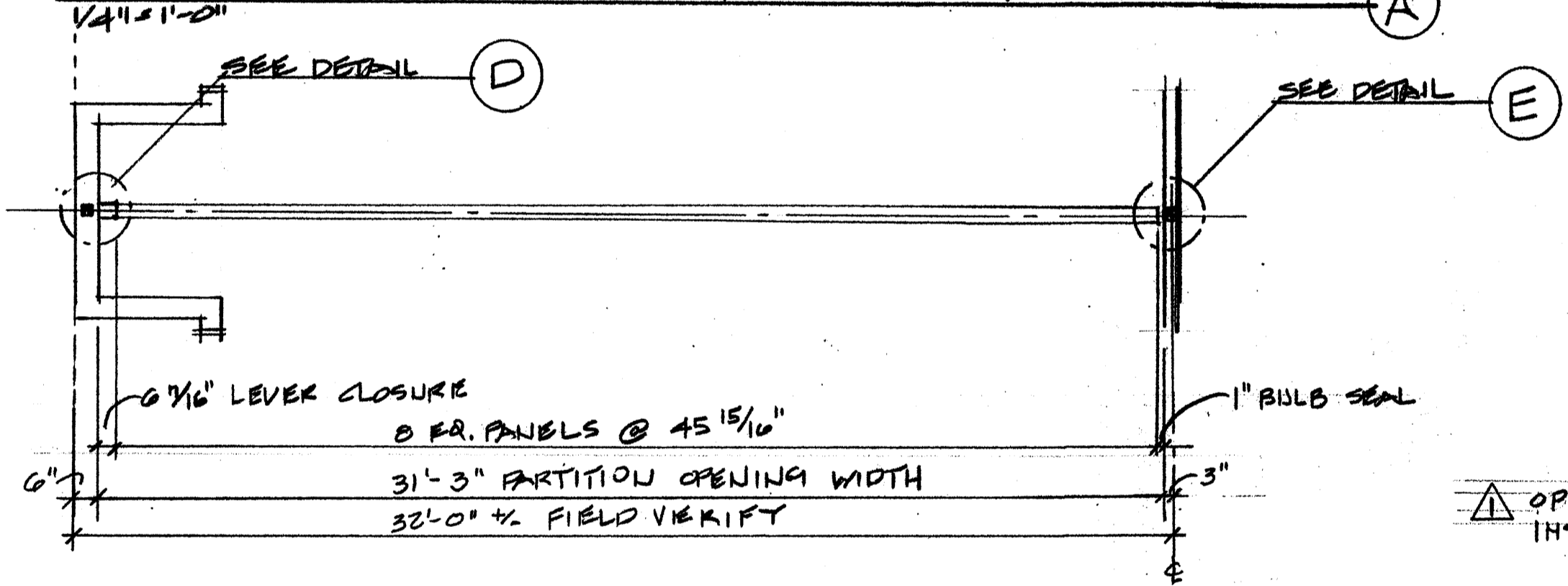
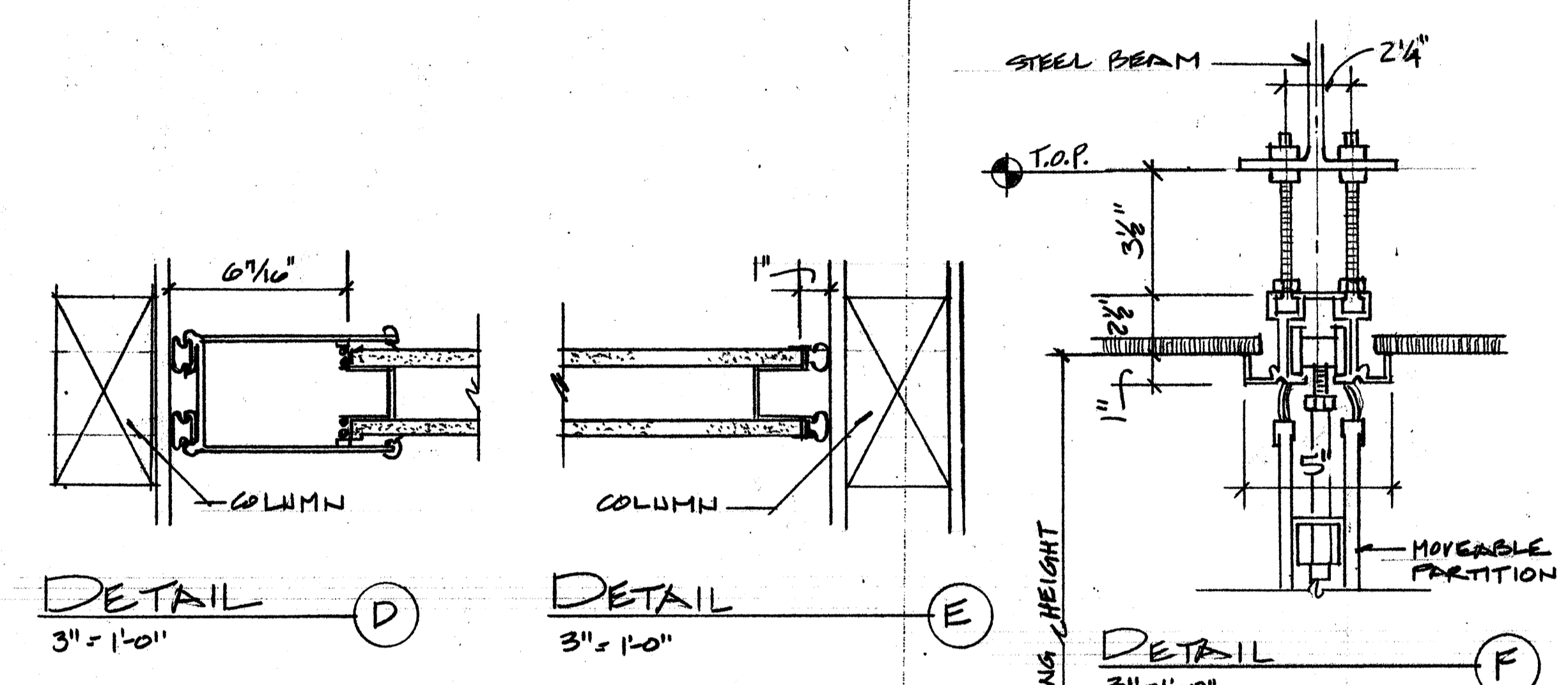
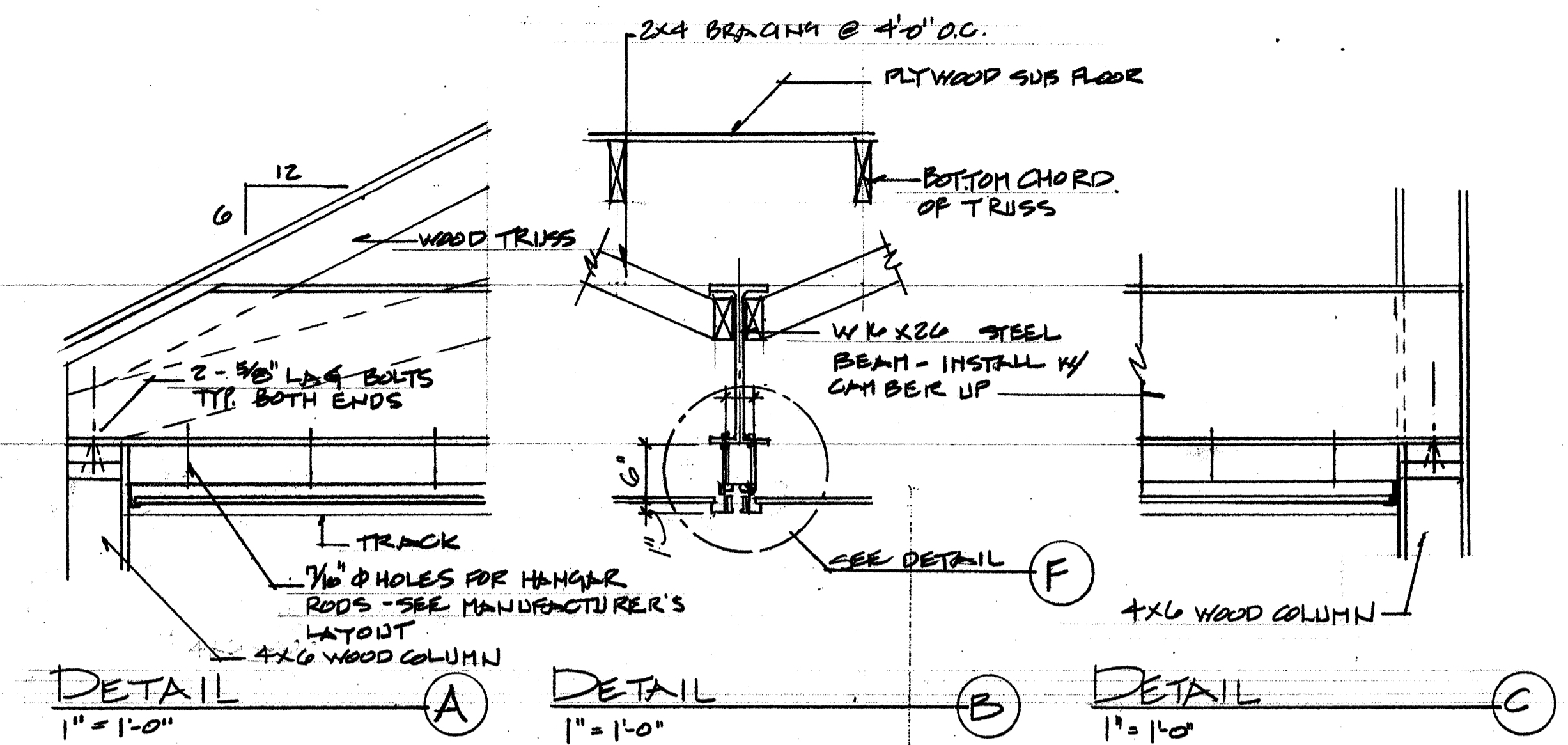


BUILDING SECTION @ MOVEABLE PARTITION

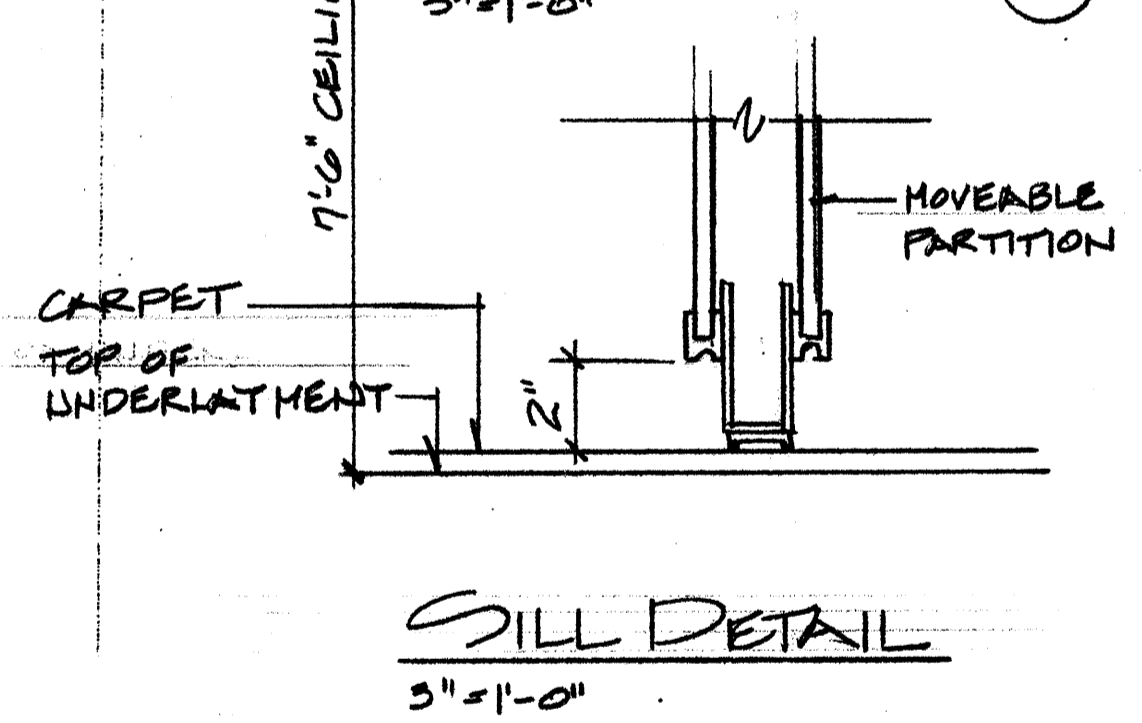


FLOOR PLAN @ MOVEABLE PARTITION



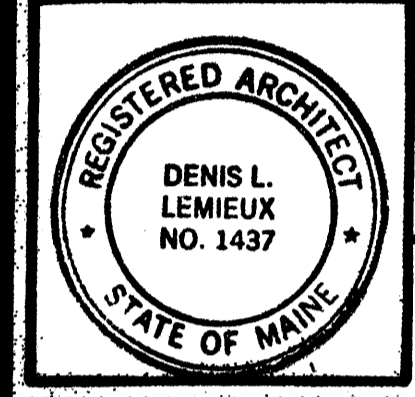
HUFOR 630 SERIES, TOP SUPPORTED, CENTER STACK, PAIRED PANEL, MANUALLY OPERATED MOVEABLE PARTITIONS, ETC. #1

▲ OPERABLE PARTITION SUPPLIED BY OWNER  
INSTALL BY CONTRACTOR



SILL DETAIL

DATE	BY
10-28-09	DL
REVISIONS	
VALUE ENGINEERING MODIFICATIONS	
DATE	BY



Project Title  
**Hutchins Funeral Home**  
 660 Brighton Avenue  
 Portland, Maine

Drawing Title	Scale	NOTED	DATE
<b>Building Section at Hutchins Funeral Home</b>			
<b>Movable Partition</b>			
Drawn by	DLL	Checked by	
Date		Date	
Project No.	0813		
Sub Title			
Drawing No.	A-3.3		

October 28, 2009  
 Issued for Construction

J.L. Associates / Architect 1000 Main Street - C Portland, Maine 04260 (207) 344-6011 DL@JLA.COM