

Code Compliance Summary

Building Design Codes:
 Maine Human Right Act (ADA)
 International Building Code IBC
 NFPA 101 Life Safety Code
 State of Maine Plumbing Code
 ASHRAE / IES Standard 90.1
 National Electric Code

Use Group Classifications:
 IBC: Assembly Group A-3
 Business Group B
 Storage Group S-2
 NFPA: Assembly Chapter 12
 Business Chapter 38
 Storage Chapter 42

Construction Type
 IBC: Type V-B
 NFPA: Type V (000)

Building Heights and Areas
 IBC: Group A-3
 Height in feet 40
 Height in stories 1
 Allowable Area 6000 sq.ft.

Automatic Sprinkler Increase
 IBC: One story or 20 foot increase
 Local Ordinance Height Limit: 45 feet

Building Area
 Lower Level: 4528 sq.ft.
 Upper Level: 4463 sq.ft.

Fire Suppression
 Fully Sprinkled with Supervised System

Means of Egress
 Common Path of Travel: 20 feet
 Maximum Travel Distance:
 Dead End Corridors: 20 feet

Fire Resistance Ratings:
 Elevator Shaft: 1 Hour
 Mechanical Room Walls: 1 Hour
 Parlor Room Walls: 1 Hour
 Garage / Storage Ceiling: 1 Hour

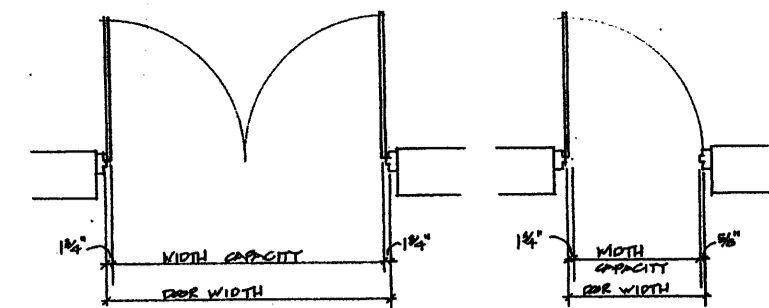
Summary:
 In general the existing structure is in compliance with the current IBC standards for Type V-B or NFPA Type V (000) construction. The areas of deficiencies are as follows:
 Exit doors are required to have push-type panic hardware. The existing exit doors do not have panic hardware.
 The building is required to have a full fire alarm system and fully sprinkled with supervised system.

ADA Code Review

Path of Travel:
 An accessible path of travel must be provided from the designated handicap parking spaces (both visitor and employees) to the building, through the entrances and throughout normally occupied spaces within the building.

Parking:
 Properly sized and marked handicap parking spaces should be provided for both visitors and employees.

Access to Entrances:
 Walkways from designated handicap parking spaces to the building should be accessible per ADA standards. The walkways from visitors parking at the front entrance cannot be used by wheelchair clients. The main entrance will be from the parking lot in the back of the building which will be accessible to wheelchair clients.

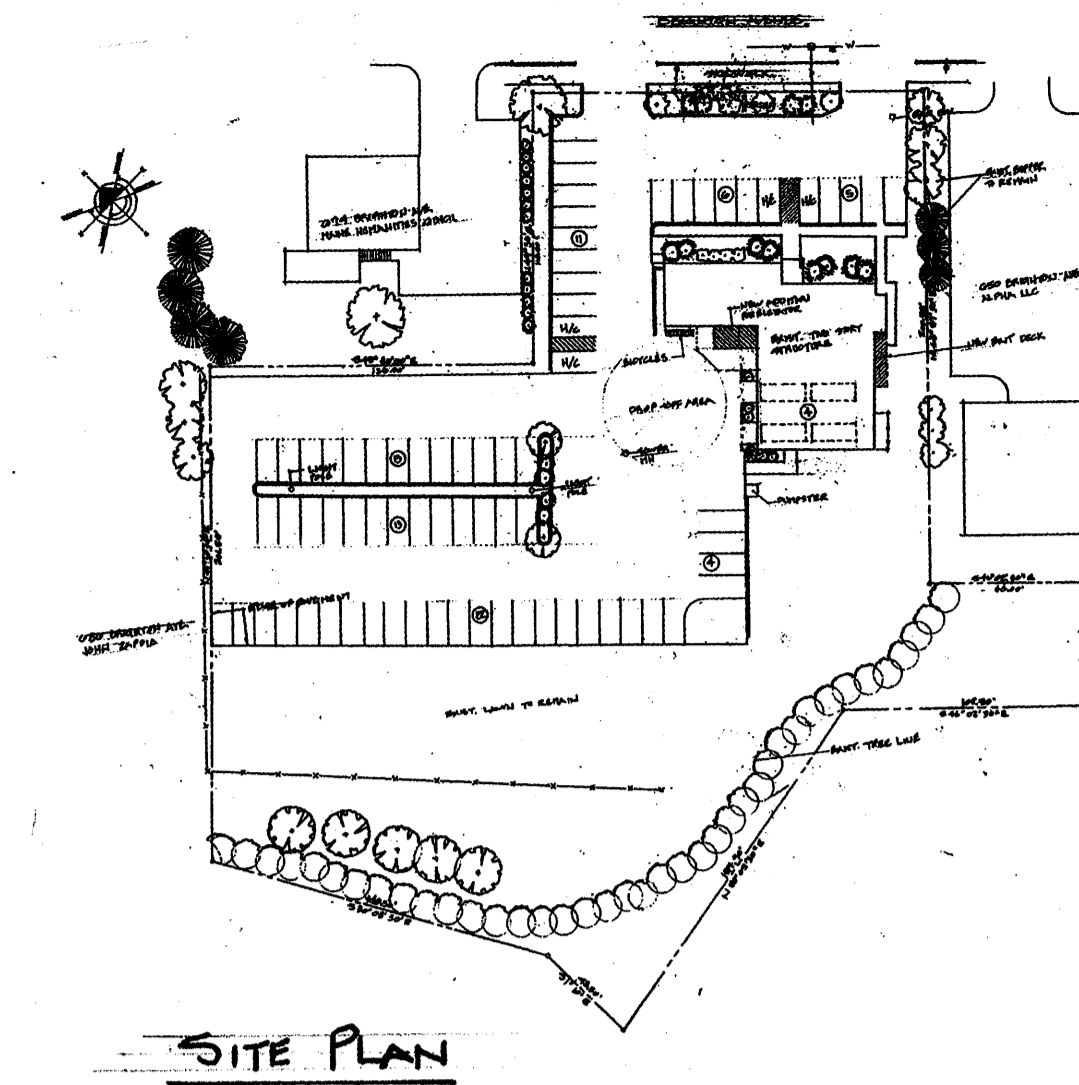


EXIT CAPACITY DIAGRAM

Occupant Load Analysis				
DESCRIPTION	ROOM NO.	SF / OCC	SQUARE FOOT	OCC.
General Storage, Garage, Mechanical Room, Janitor	L-3, L-4, L-13, L-14, L-15	300	1920	8
Procedure Rooms, General Business Office, Lobby	L-1, L-2, L-5, L-7, L-8, L-10, L-12	100	2428	25
Parlors Assembly Space	U-4, U-5	7	1728	247
General Business Office, Lobby	U-1, U-2, U-6, U-7, U-8, U-9, U-11, U-12	100	2444	24
Equipment Storage	U-3	300	176	1

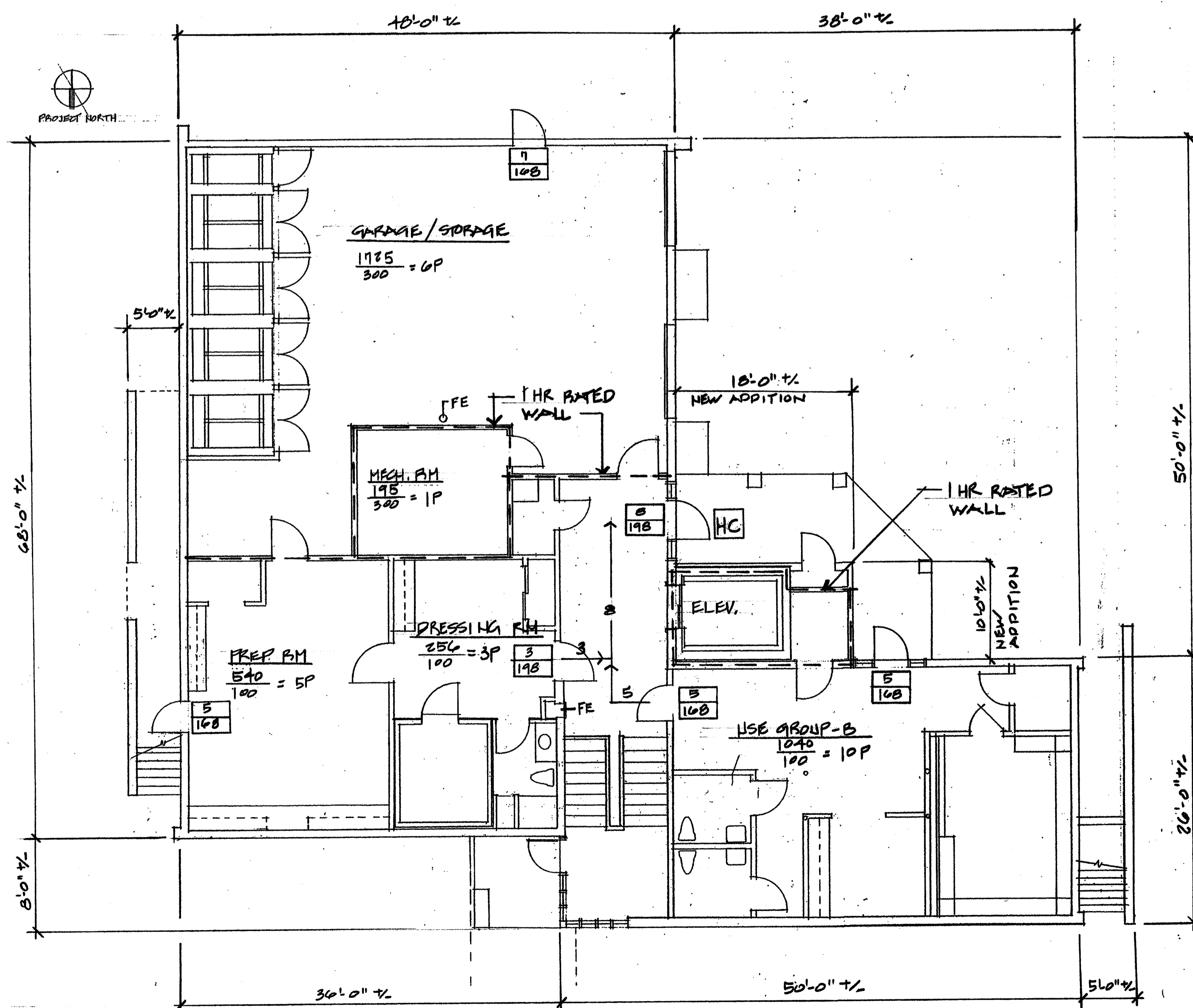
LEGEND

- EXIT CAPACITY
 Actual Egress Capacity
 Max. Allowable Capacity
- ROOM OCCUPANCY LOAD
 Area Gross Square Feet
 Occupancy Load Factor
- Direction / Load of Traffic to Exit
- Handicap Accessible Route
- FIRE EXTINGUISHER



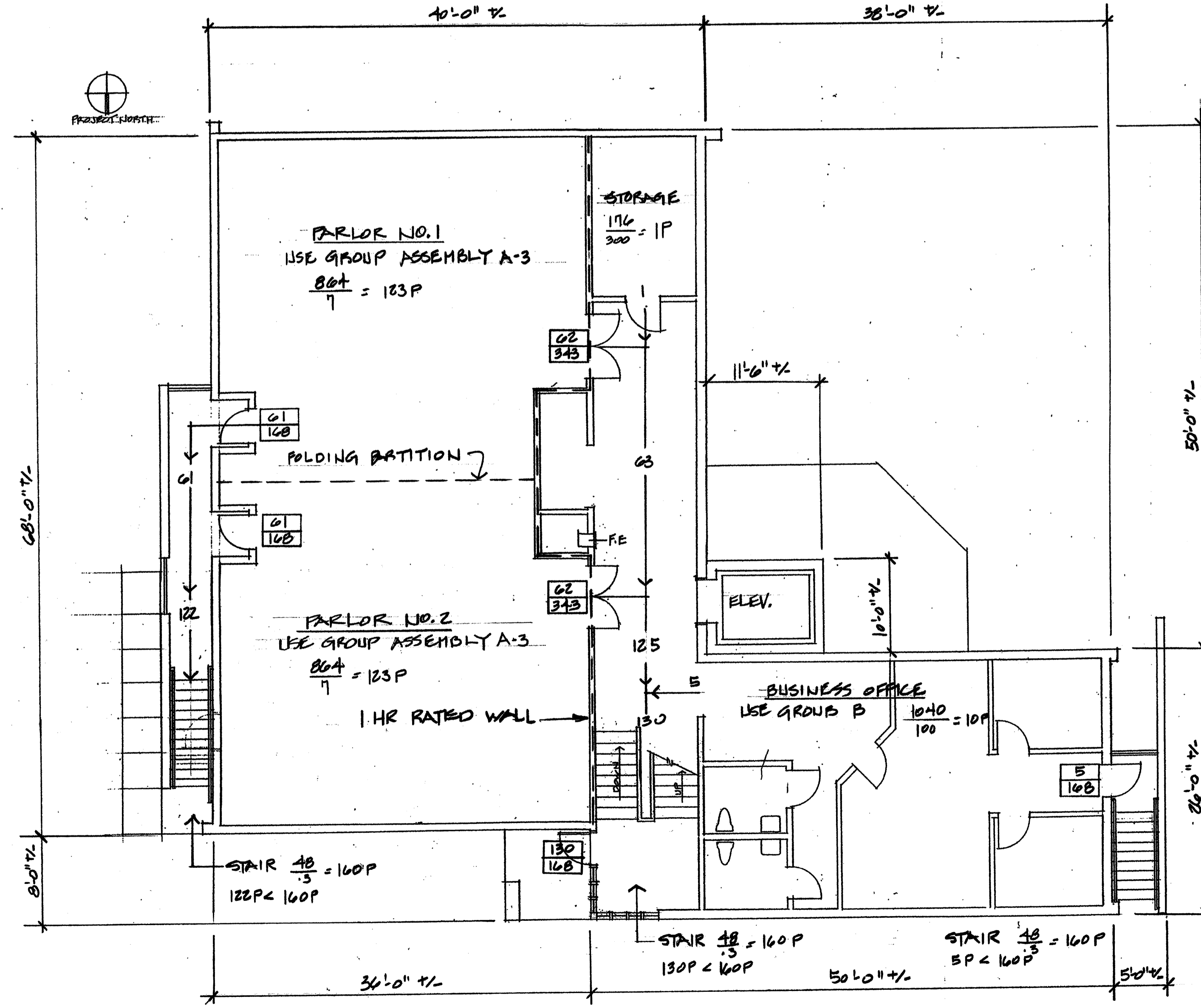
SITE PLAN

NOTE: SEE DRAWING NO. ELS1 & ELS2 FOR ELECTRICAL LIFE SAFETY LIGHT



LOWER LEVEL CODE PLAN

1/8" = 1'-0"

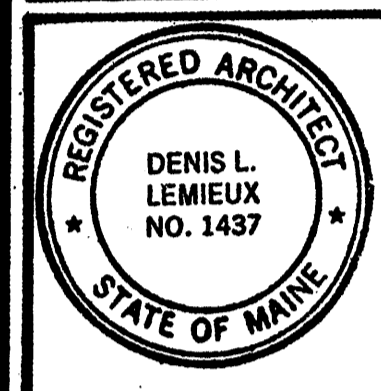


UPPER LEVEL CODE PLAN

1/8" = 1'-0"

October 28, 2009
 Issued for Construction

No.	Revisions	Date	By



Project Title
Hutchins Funeral Home
 660 Brighton Avenue
 Portland, Maine

Drawing Title	Code Plan
Project No.	0813
Sub Title	
Drawing No.	G-1

198 Main Street, Suite - C Lewiston, Maine 04240 (207) 344-6611 DLLA@AOL.COM
DLL Associates / Architects