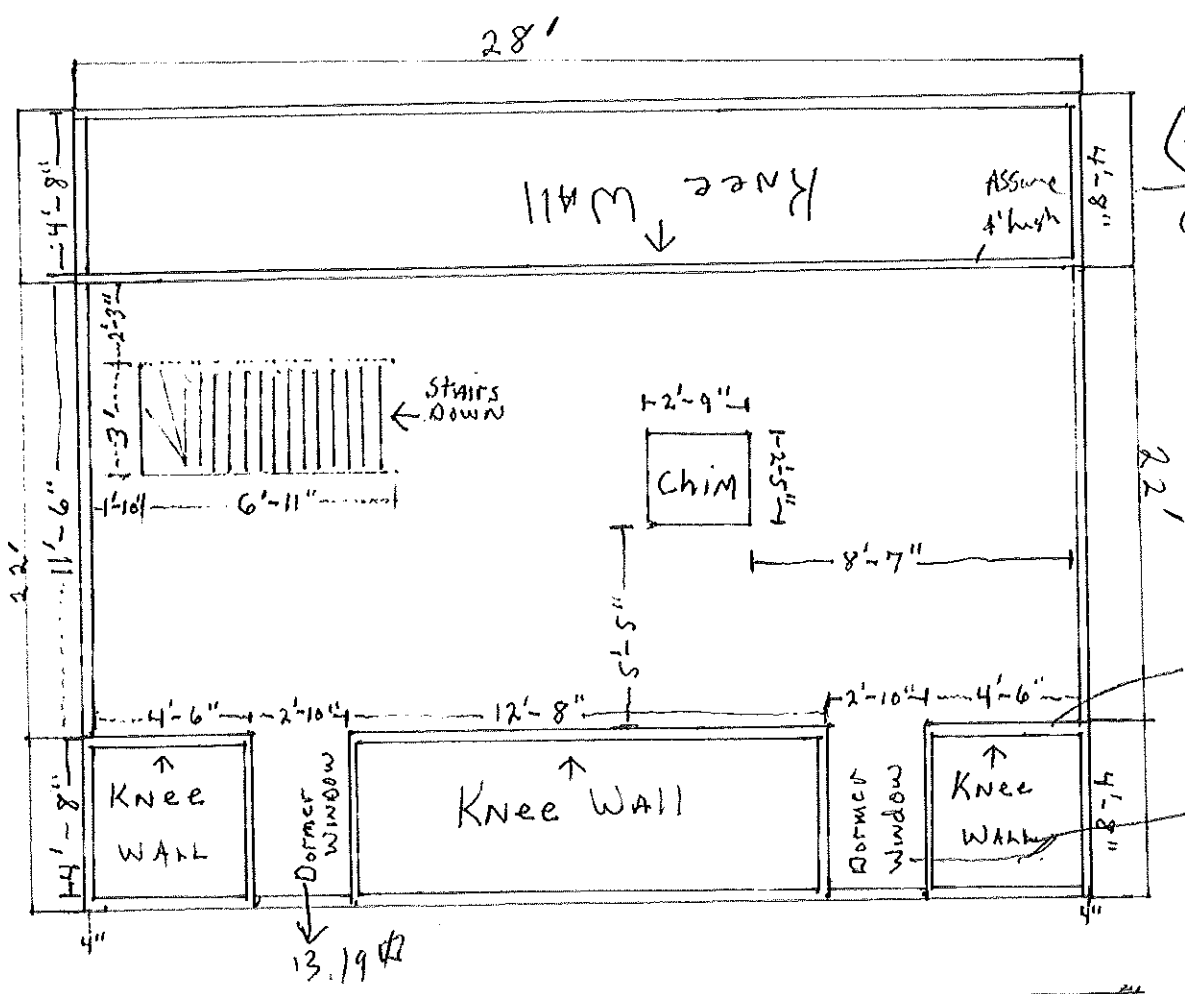


1st floor footprint = 727[#] x 80% = 581.6[#] New Allowed

New Area 18 x 28 = 504[#]
 - 348.38 existing 2nd floor

155.62 - increased floor area
 $155.62 \div 727[#] = 21.4\%$



349 Capisic St.
 Portland, ME
 Existing - 2nd FLR.
 Cape - with 2 Dormers

Assume 4' high

$4.66 \times 2.83 = 13.19$

CAPISIC STREET

Scale: 1/4" = 1 FT.

$$11.5 \times 28 = 322[#] + (13.19[#]) 2 = 26.38 + 322 = 348.38[#] existing$$

14-436(b) has lot size for R-3 Zone (9407[#])
 but not the setbacks - can increase 80%