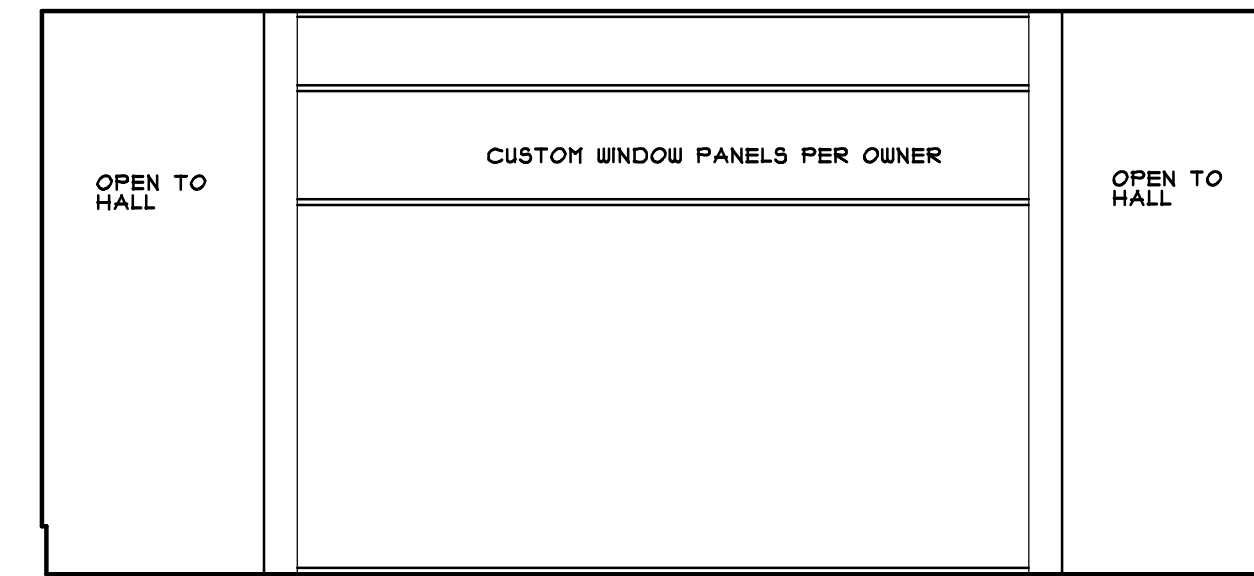
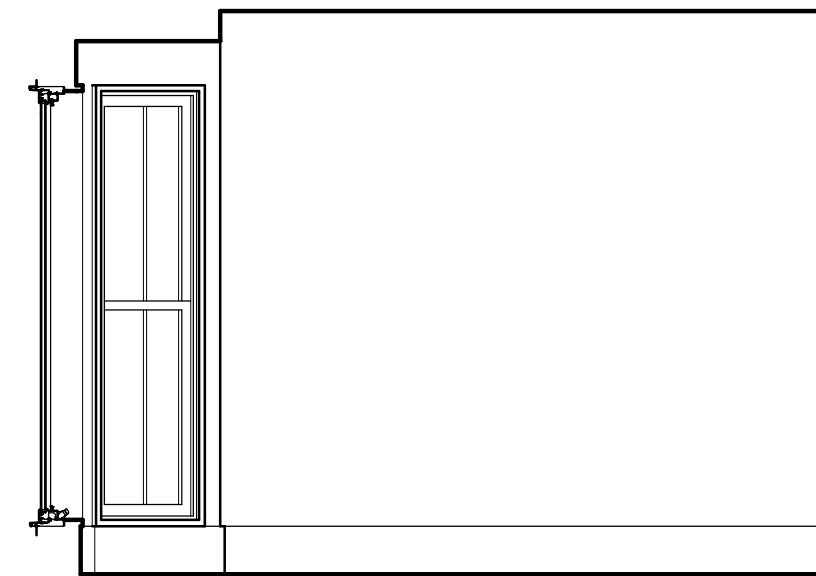
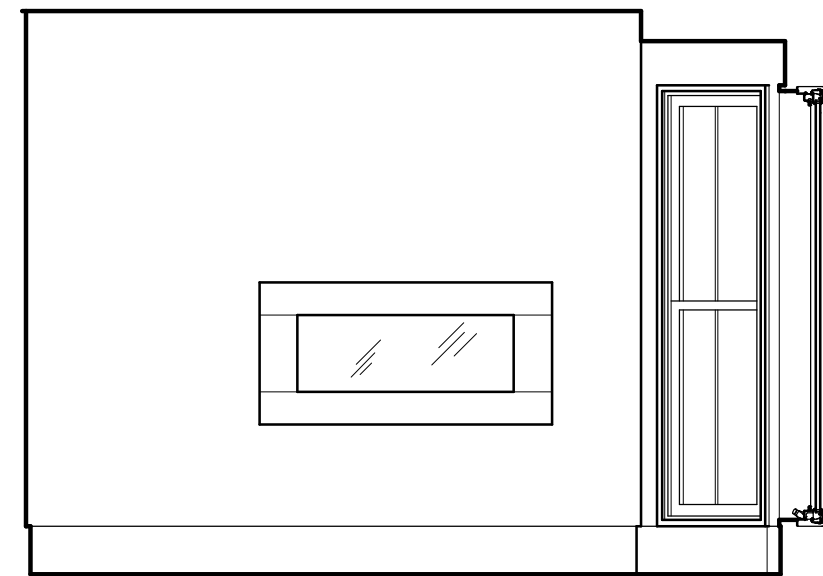
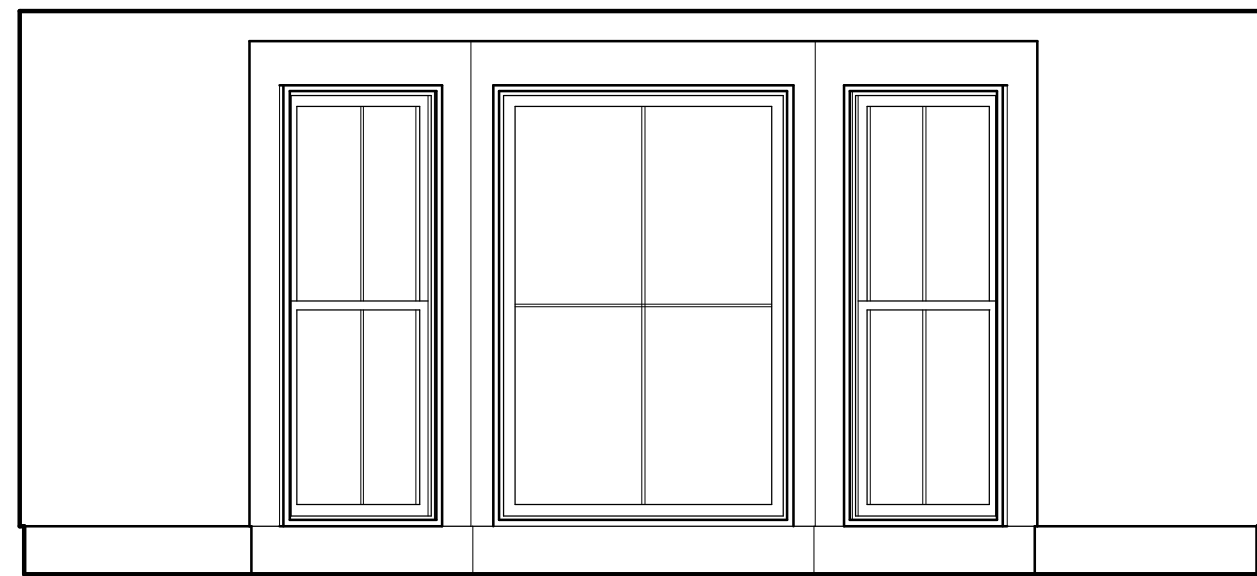
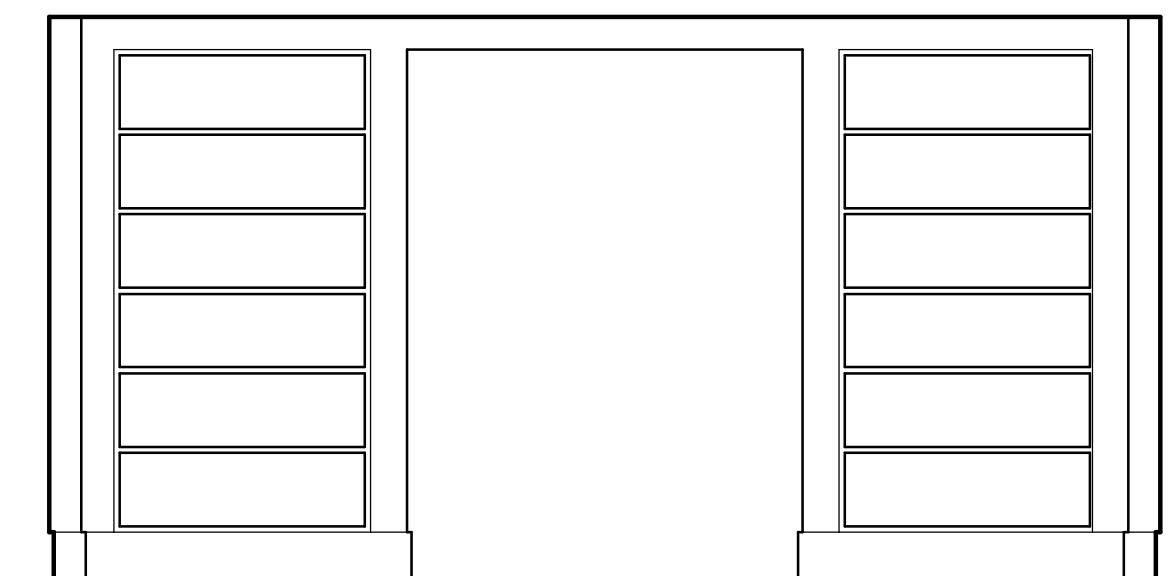
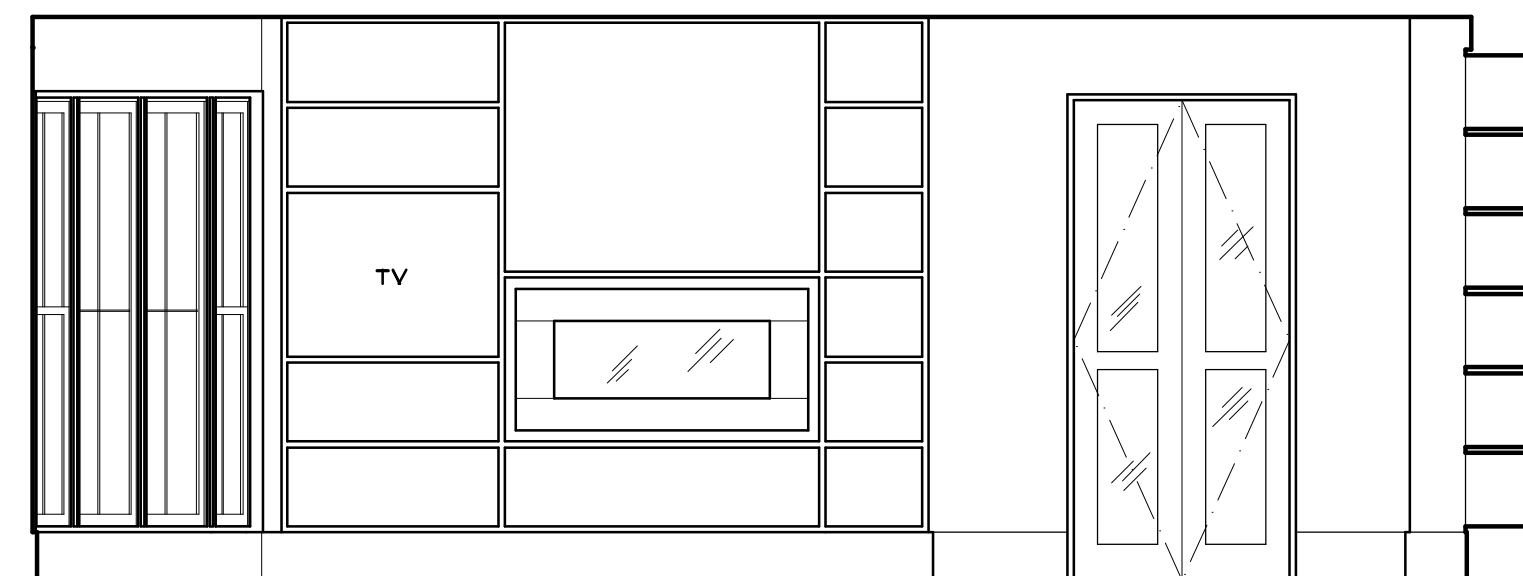
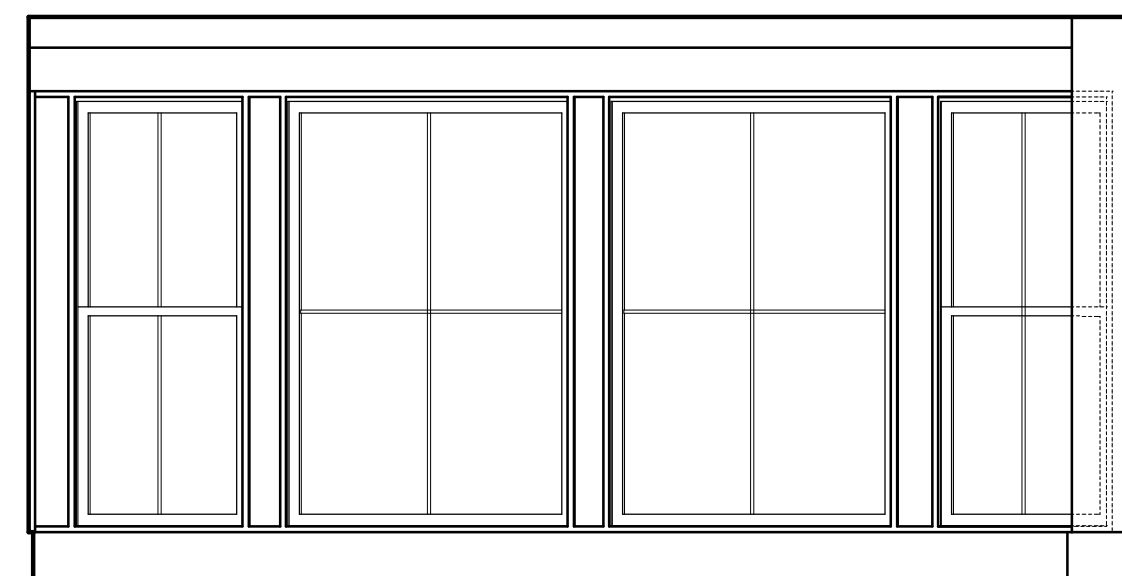
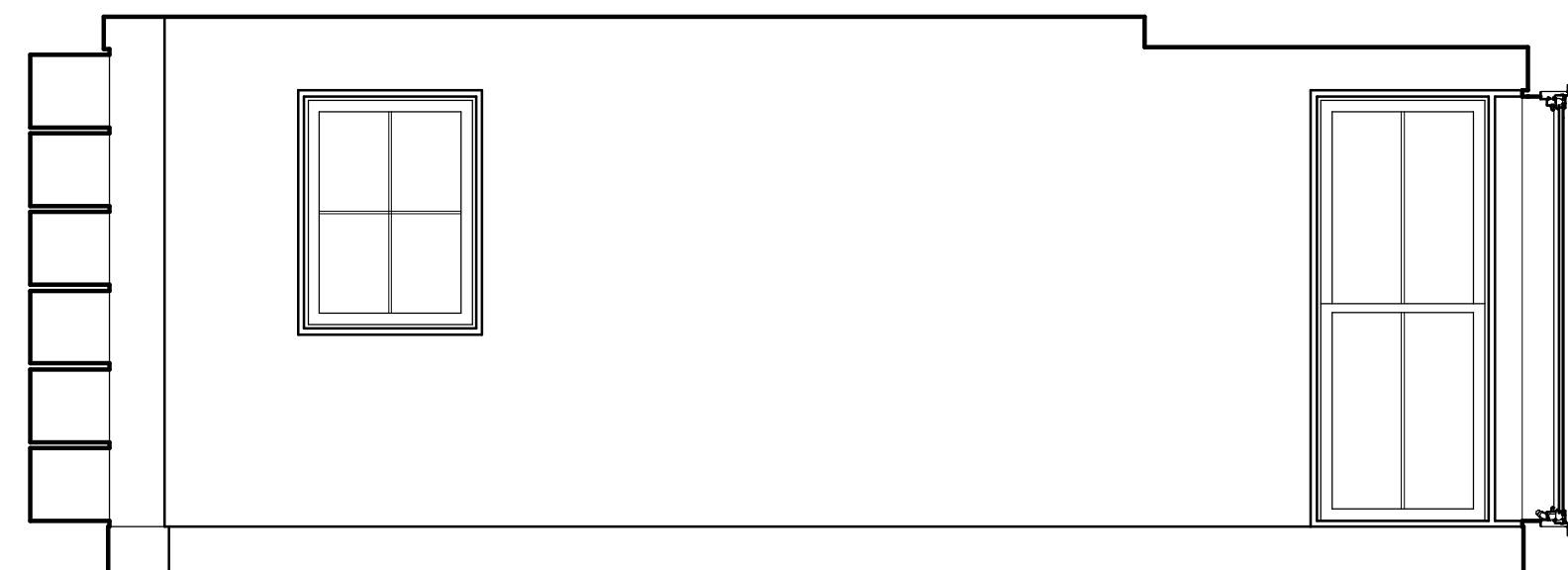


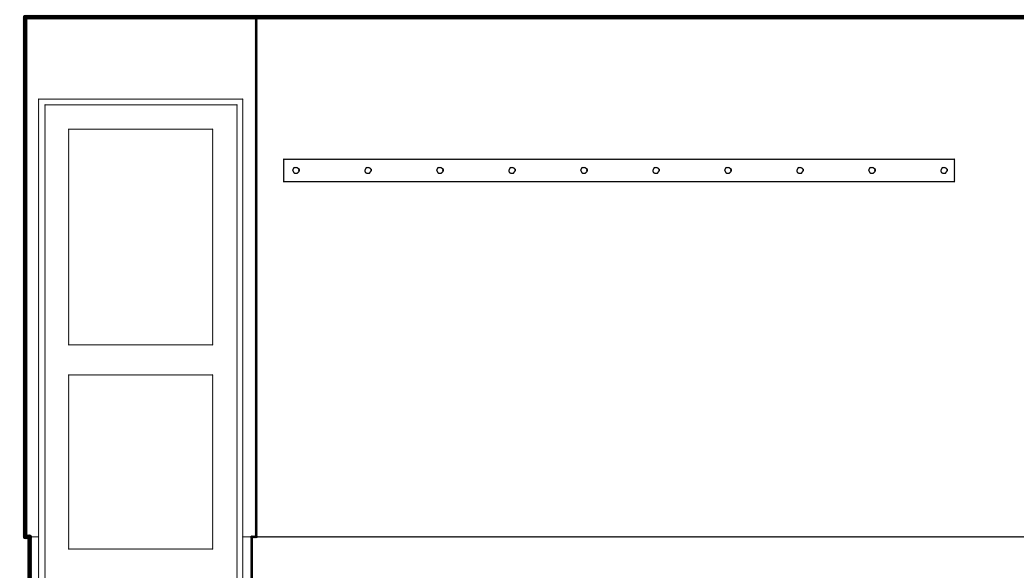
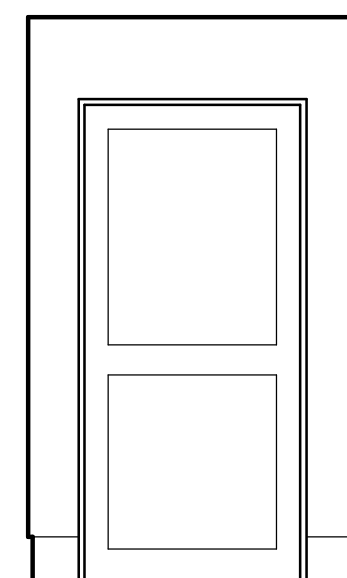
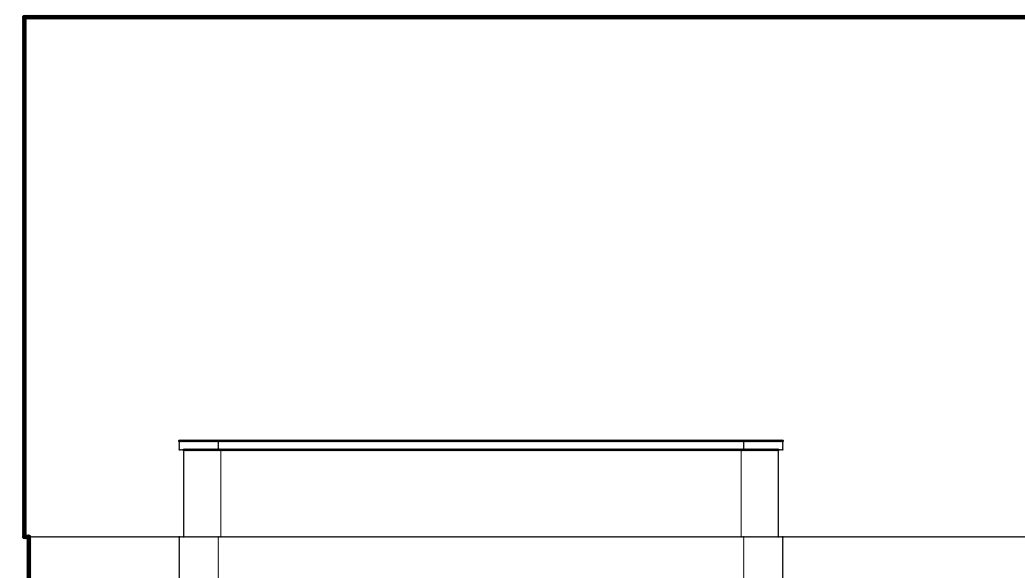
1 FRONT ENTRY ELEVS.  
A1.1 3/8" = 1'-0"



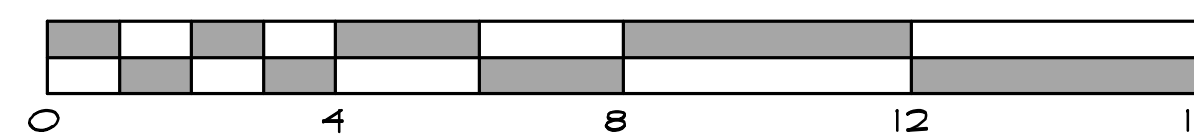
2 DINING ELEVS.  
A1.1 3/8" = 1'-0"



3 LIVING ELEVS.  
A1.1 3/8" = 1'-0"



4 BASEMENT MUDROOM ELEVS.  
A1.1 3/8" = 1'-0"



PROJECT  
SMITH-HOOPES RESIDENCE  
LOCATION  
63 STROUDWATER RD.  
PORTLAND, ME

DATE  
02.12.2013  
ISSUED FOR PRICING:  
XX.XX.XX  
ISSUED FOR CONSTRUCTION:  
05.28.2013  
REV  
XX.XX.XX  
REV

HOUSES & COTTAGES  
ERIC E. ALDYN - ARCHITECTURAL DESIGNER  
351 MAIN ST.  
207-514-5551  
ROCKLAND, ME 04841  
WWW.HOUSESANDCOTTAGES.COM

CONSTRUCTION SET

A1.1