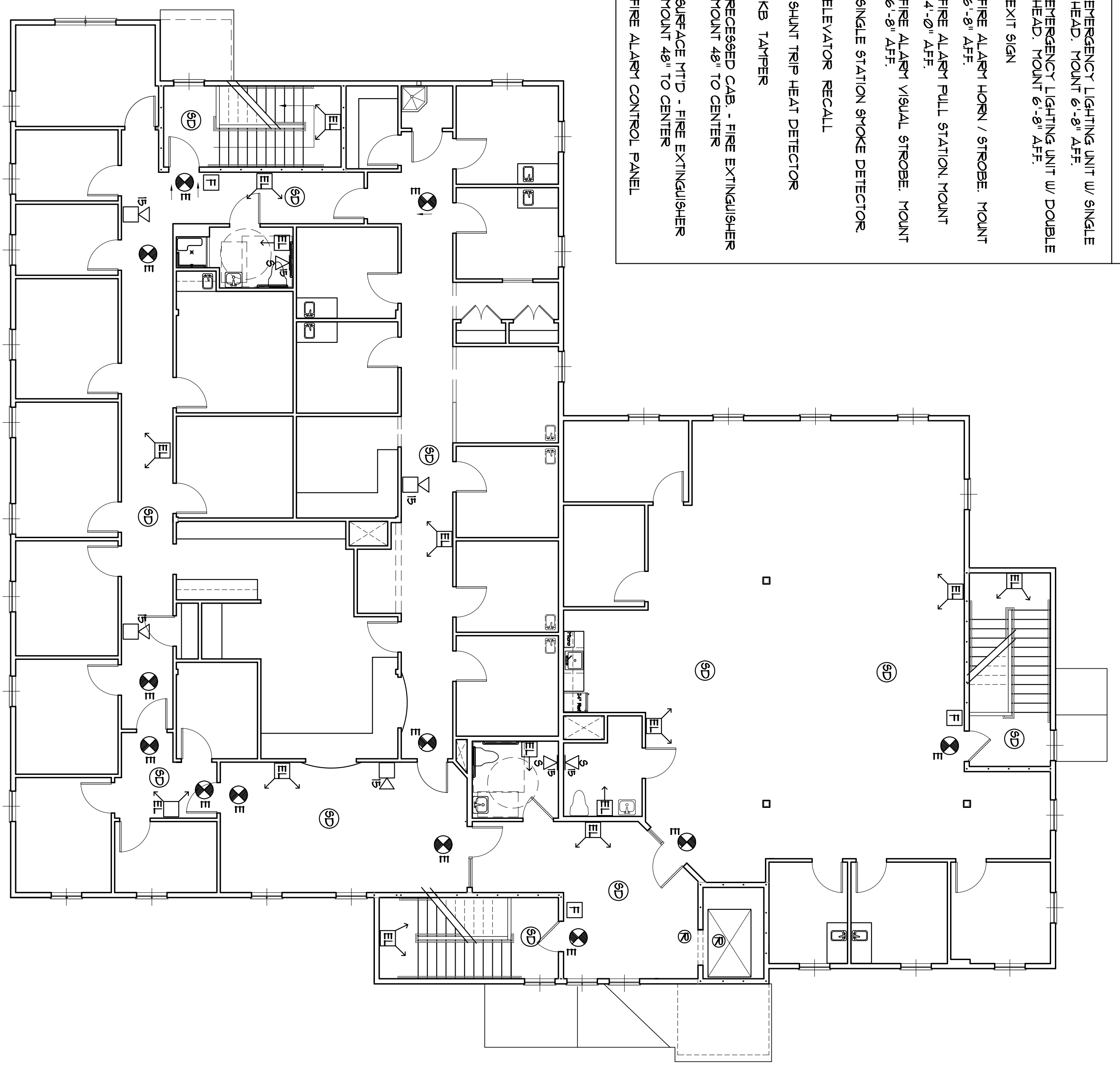


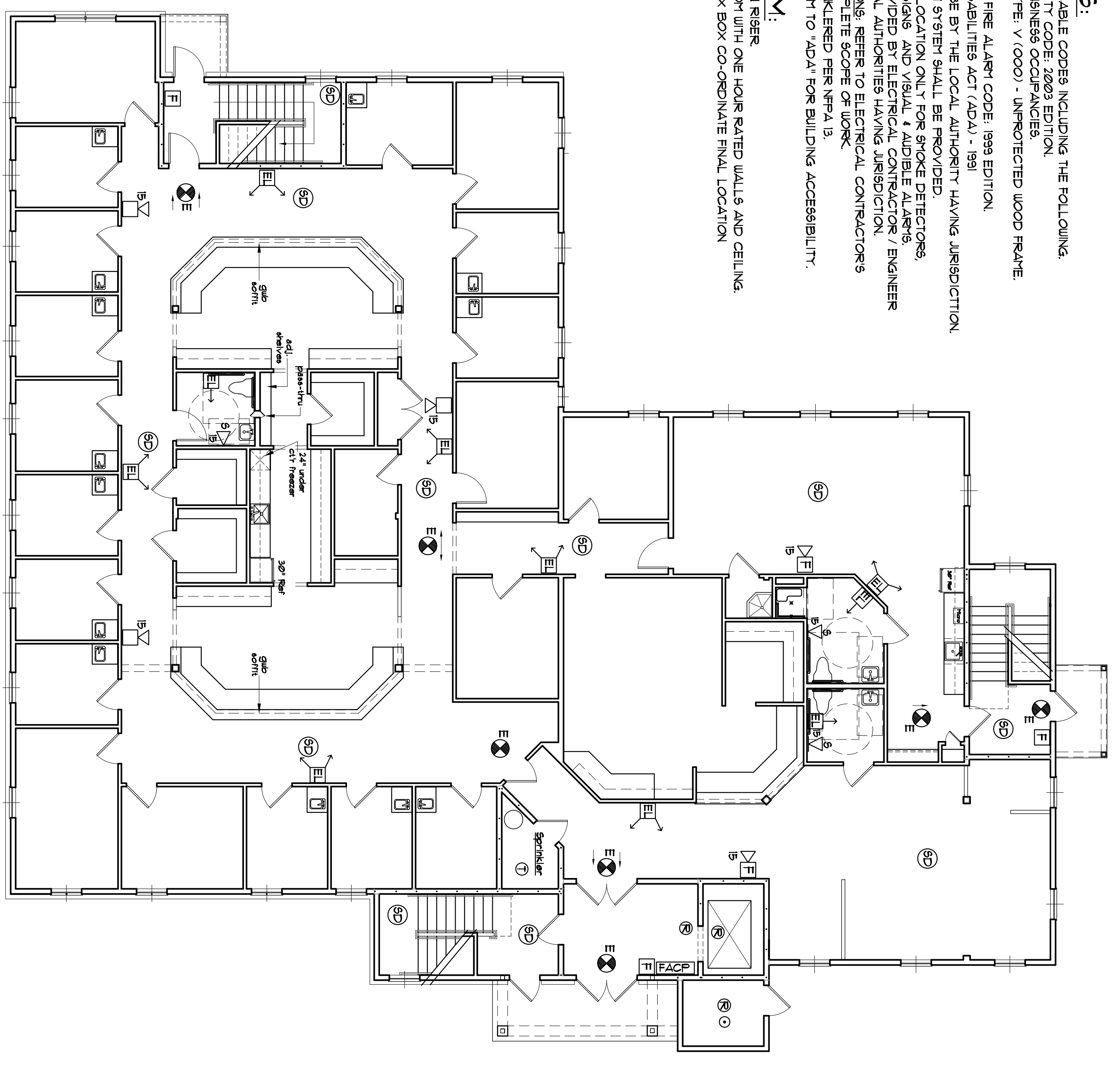
	EMERGENCY LIGHTING UNIT W/ SINGLE HEAD, MOUNT 6'-8" AFF.
	EMERGENCY LIGHTING UNIT W/ DOUBLE HEAD, MOUNT 6'-8" AFF.
	EXIT SIGN
	FIRE ALARM HORN / STROBE, MOUNT 6'-8" AFF.
	FIRE ALARM PULL STATION, MOUNT 4'-0" AFF.
	FIRE ALARM VISUAL STROBE, MOUNT 6'-8" AFF.
	SINGLE STATION SMOKE DETECTOR
	ELEVATOR RECALL
	SHUNT TRIP HEAT DETECTOR
	K9 TAMPER
	RECESSED CAB. FIRE EXTINGUISHER MOUNT 48" TO CENTER
	SURFACE MTD - FIRE EXTINGUISHER MOUNT 48" TO CENTER
	FIRE ALARM CONTROL PANEL



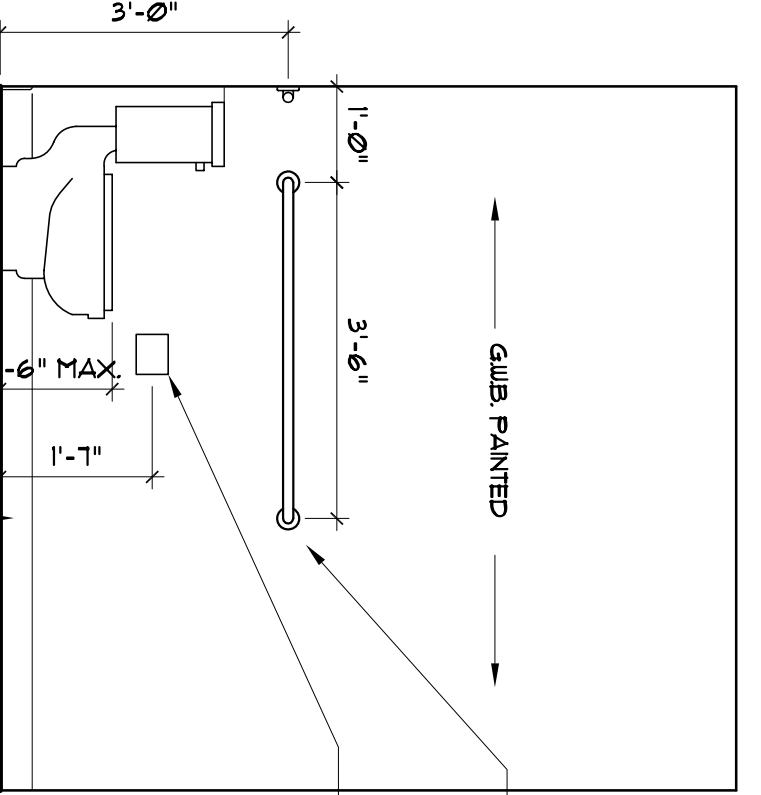
11 SECOND FLOOR - FIRE ALARM PLAN
SCALE: 1/8" = 1'-0"

- GENERAL NOTES:**
- COMPLY WITH ALL APPLICABLE CODES INCLUDING THE FOLLOWING:
 - NFPA 101 - LIFE SAFETY CODE: 2003 EDITION, CHAPTER 36 - NEW BUSINESS OCCUPANCIES, CONSTRUCTION TYPE: V (OOO) - UNPROTECTED WOOD FRAME.
 - IEC 2003 EDITION.
 - NFPA 72 - NATIONAL FIRE ALARM CODE: 1999 EDITION.
 - AMERICANS WITH DISABILITIES ACT (ADA) - 1991.
 - FINAL APPROVAL SHALL BE BY THE LOCAL AUTHORITY HAVING JURISDICTION.
 - A MONITORED FIRE ALARM SYSTEM SHALL BE PROVIDED.
 - PLAN DENOTES GENERAL LOCATION ONLY FOR SMOKE DETECTORS, EMERGENCY LITES, EXIT SIGNS AND VISUAL & AUDIBLE ALARMS. FINAL DESIGN TO BE PROVIDED BY ELECTRICAL CONTRACTOR / ENGINEER AND APPROVED BY LOCAL AUTHORITIES HAVING JURISDICTION.
 - ELECTRICAL SPECIFICATIONS, REFER TO ELECTRICAL CONTRACTORS SPECIFICATIONS FOR COMPLETE SCOPE OF WORK.
 - BUILDING SHALL BE SPRINKLERED PER NFPA 13.
 - ALL WORK SHALL CONFORM TO "ADA" FOR BUILDING ACCESSIBILITY.

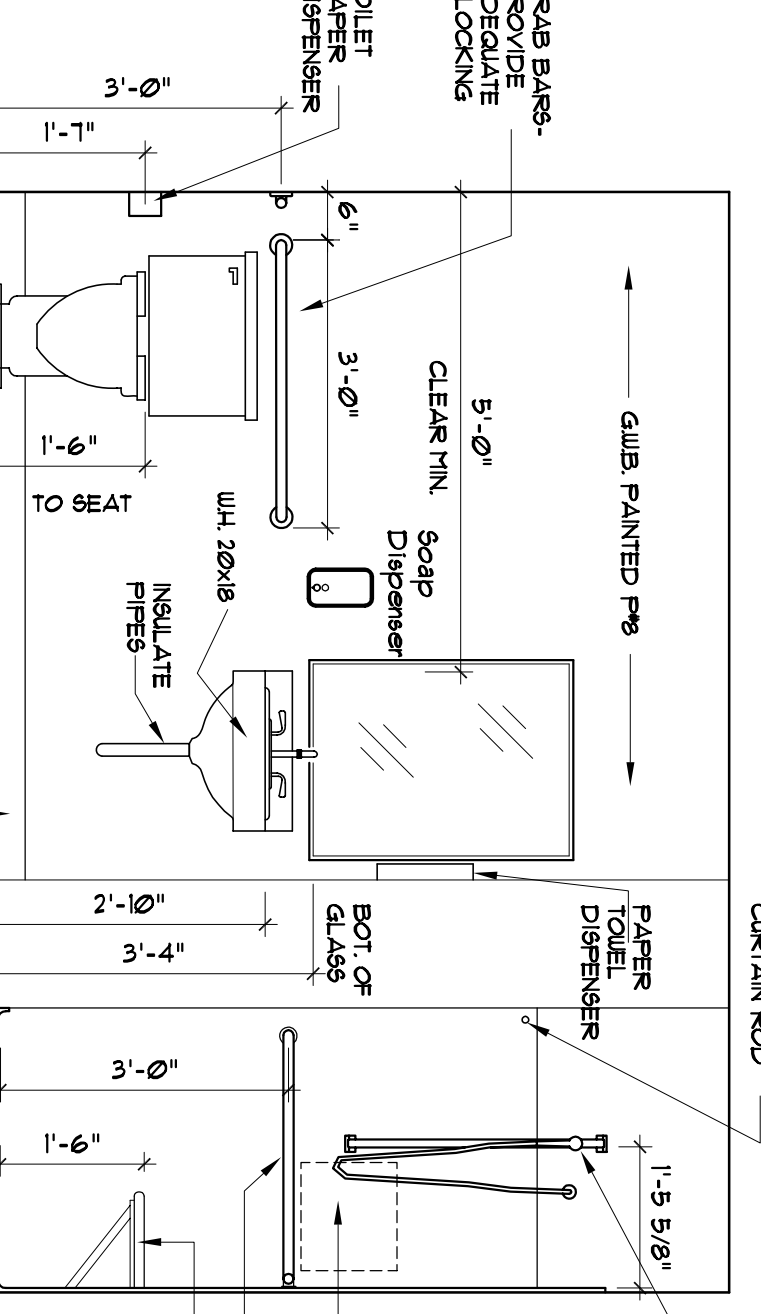
- SPRINKLER ROOM:**
- SPRINKLER ROOM WITH MAIN RISER
 - CONSTRUCT SPRINKLER ROOM WITH ONE HOUR RATED WALLS AND CEILING
 - EXTERIOR FIRE ALARM KNOX BOX CO-ORDINATE FINAL LOCATION WITH FIRE DEPARTMENT.



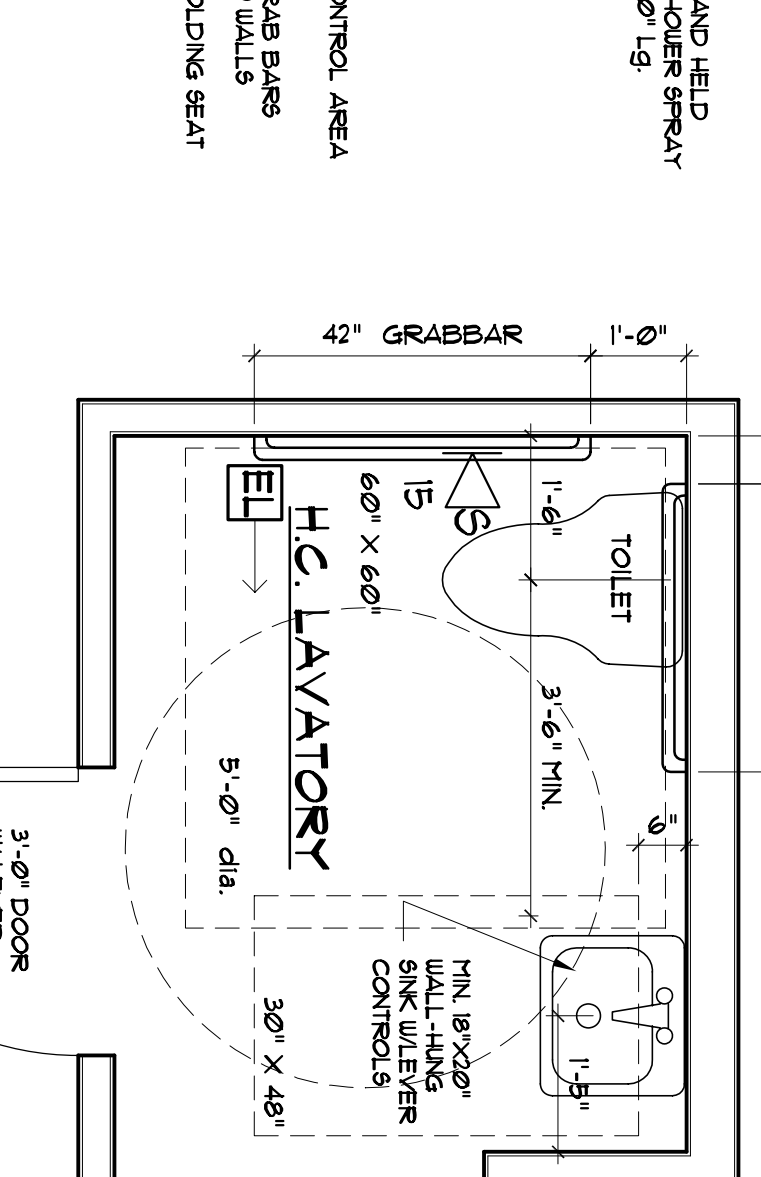
10 FIRST FLOOR - FIRE ALARM PLAN
SCALE: 1/8" = 1'-0"



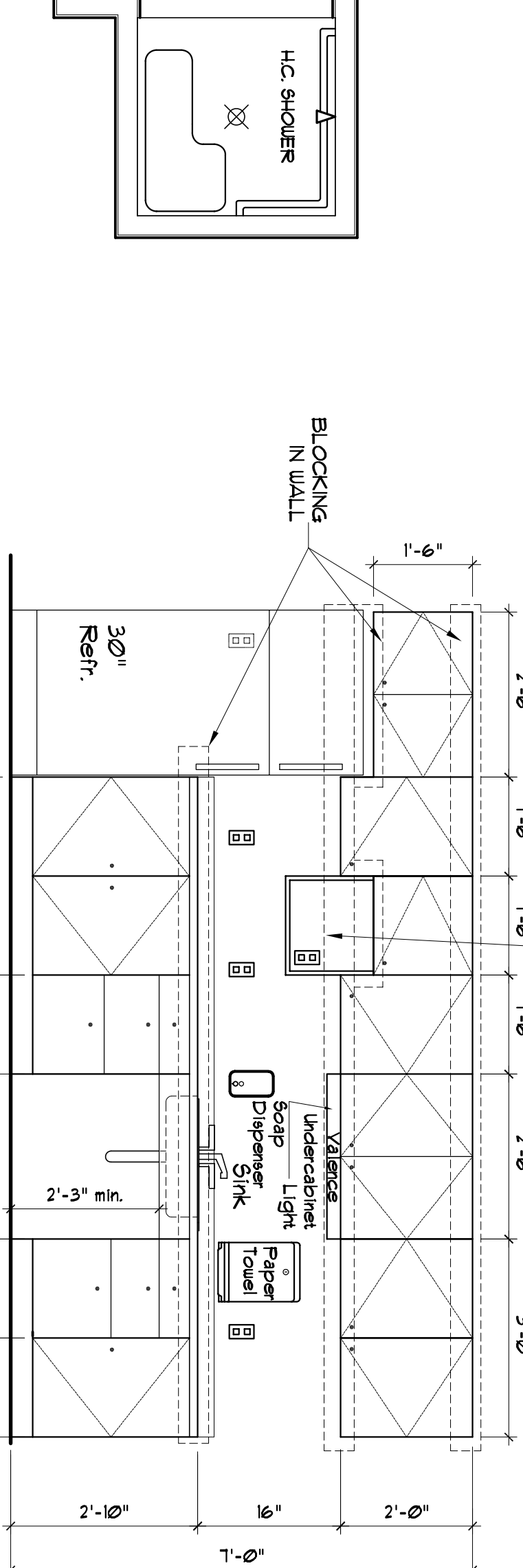
ACCESSIBLE LAV - ELEV.
SCALE: 1/2" = 1'-0"



ACCESSIBLE LAV - ELEV.
SCALE: 1/2" = 1'-0"

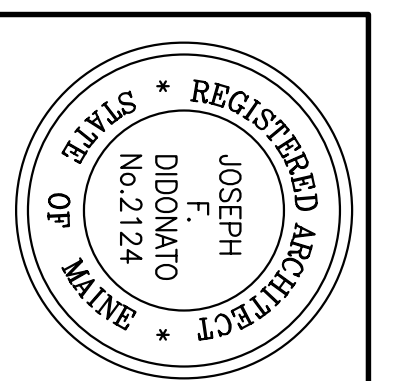


ACCESSIBLE LAVATORY PLAN
SCALE: 1/2" = 1'-0"



BREAKROOM - 112 SCALE: 1/2" = 1'-0"

NO BASE CABINET UNDER SINK (Provide two melamine side panels, doors, wingies and apron) CABINET FLOOR FINISH UNDER SINK no cabinet base or kick plate. Provide 30" wide clearance.



NO.	DATE:	REVISIONS

■ DIDONATO ARCHITECTS, INC.
134 GUINEA ROAD, KENNEBUNKPORT, ME. 04046
phone: (207) 286-2900 fax: (207) 283-4895
"E" Mail address: jdidonato@adelphia.net
www.didonatoarchitects.com

Project: **Stroudwater Station**
1577 Congress Street Portland, Maine
Owner: **1577 Congress Street Assoc. LLC**
P.O. Box 7022 Scarborough, Maine

DRAWING THIS SHEET
1/2" FIRST & SECOND
FIRE ALARM PLAN
H.C. ELEVATIONS

DATE: 04/03/07
REVISION DATE:
DRAWN BY: JFD
SHEET: 1

A5

© COPYRIGHT
REPRODUCTION OR DISSEMINATION
WITHOUT WRITTEN
PERMISSION IS PROHIBITED