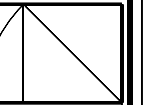


MAINE ORTHOPAEDICS CENTER
1601 CONGRESS STREET

WHIPPLE
CALLENDER
ARCHITECTS



881 CONGRESS
STREET
PORTLAND
ME 04101
775-2696

DATE 10/1/04

PROJECT
NUMBER

SCALE 1/4" or 1/8"

DRAWN JWW

CHECKED

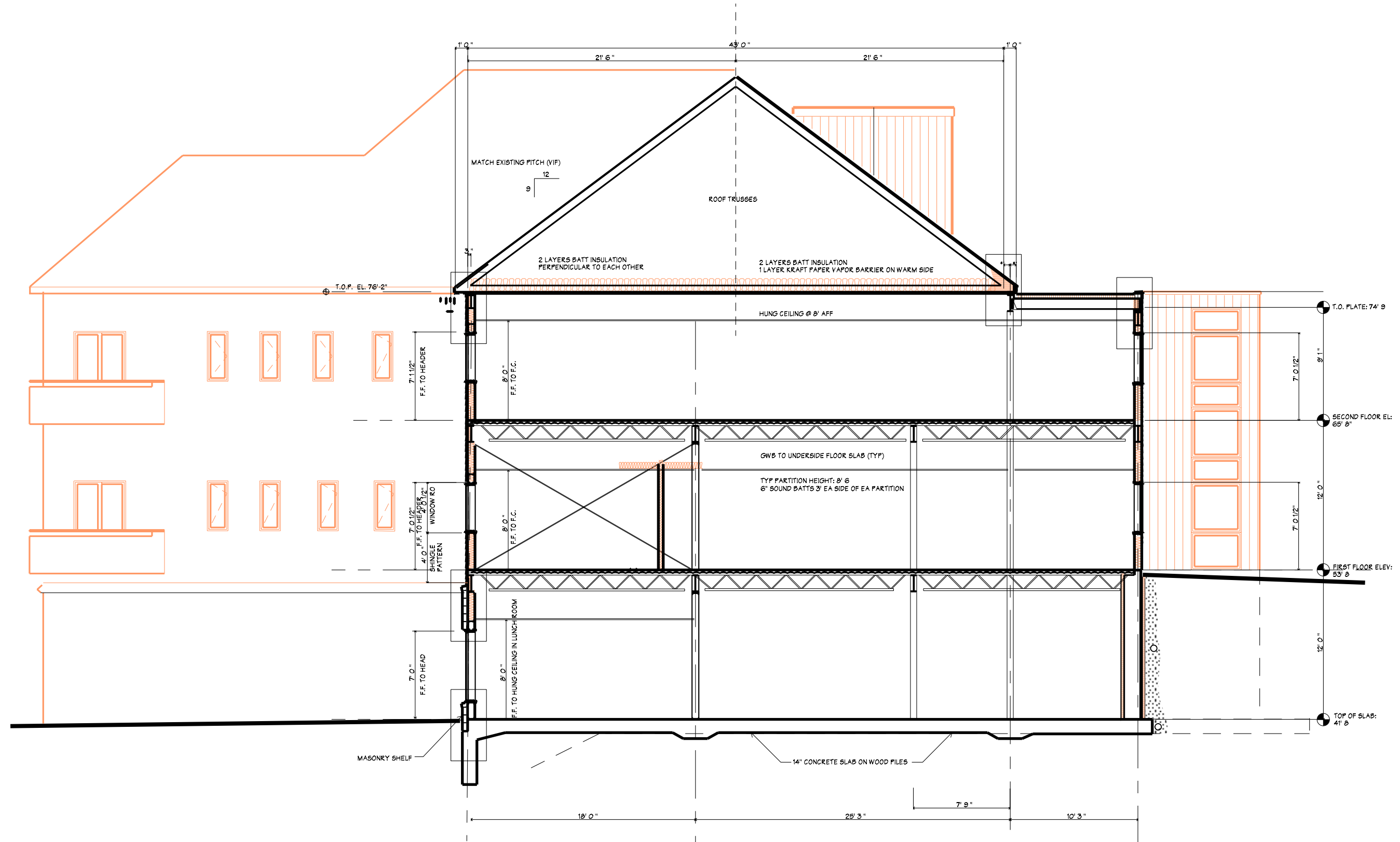
REVISED

CONTENTS

SECTION

SHEET of

A8



1 SECTION A-A
A2 1/4" = 1'