

MAINE ORTHOPAEDICS CENTER  
1601 CONGRESS ST.

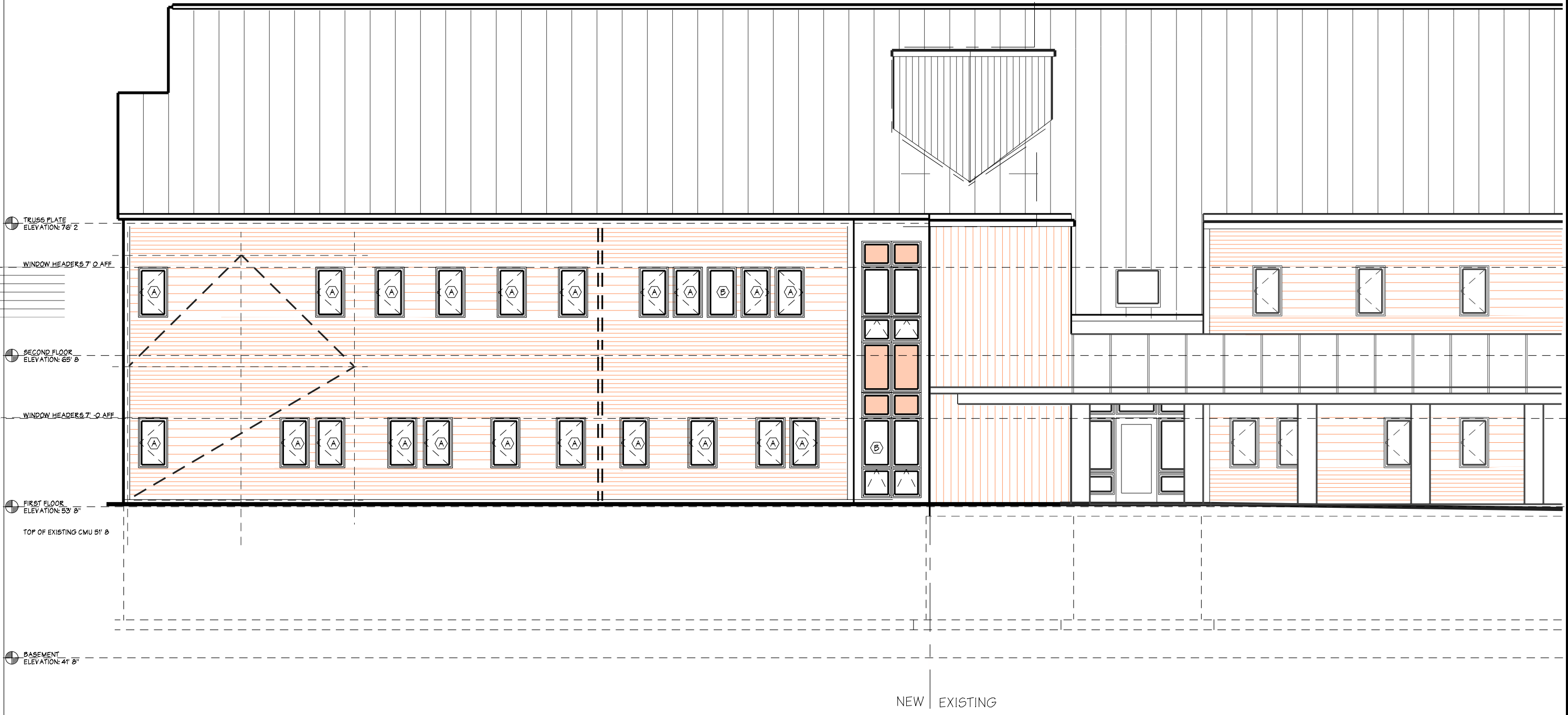
WHIPPLE  
CALLENDER  
ARCHITECTS

1601 CONGRESS  
STREET  
PORTLAND  
ME 04101  
775-2686

DATE 10/10/04  
PROJECT NUMBER  
SCALE 1/4" or 1/8"  
DRAWN JWW  
CHECKED  
REVISED  
CONTENTS  
SOUTH ELEVATION

SHEET of  
A5

0.7 0.6 0.4



1 EAST ELEVATION  
A4