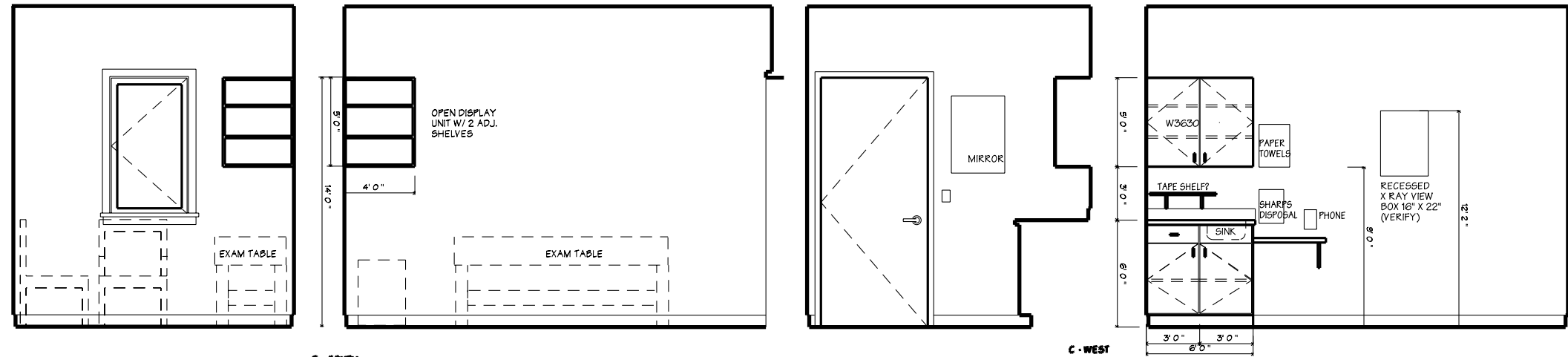
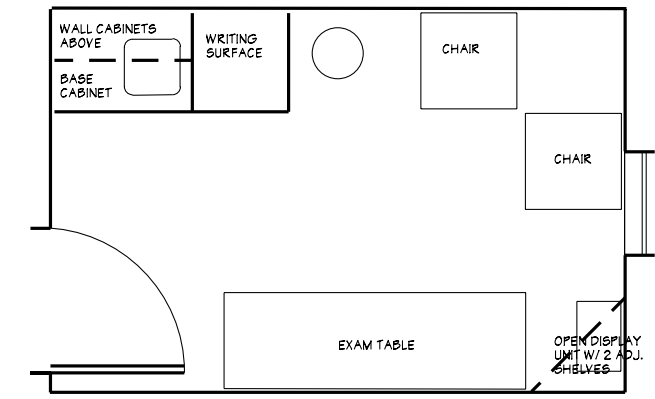
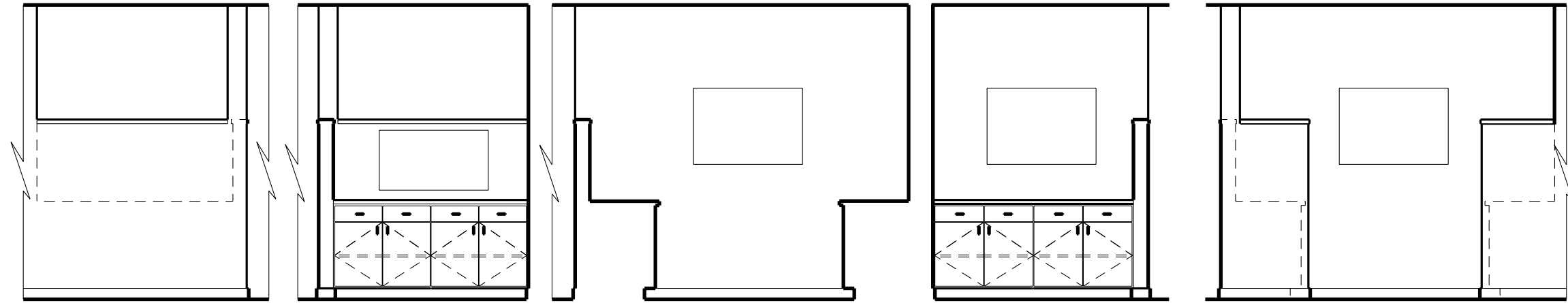


2 INTERIOR ELEVATION @ STAFF LAV
 A2.6 1/2" = 1'-0"

PATIENT BATH



1 INTERIOR ELEVATION @ TYPICAL EXAM ROOM
 A6 1/2" = 1'-0"



1 INTERIOR ELEVATION @ TYPICAL EXAM ROOM
 A6 1/2" = 1'-0"

MAINE ORTHOPAEDICS CENTER
 FROST STREET, PORTLAND, MAINE

WHIPPLE
 CALLENDER
 ARCHITECTS

551 CONGRESS
 STREET
 PORTLAND
 ME 04101
 773-2696

DATE 10/1/04
 PROJECT NUMBER
 SCALE 1/2 or 1/4
 DRAWN
 CHECKED JWW
 REVISED

CONTENTS
 INTERIOR
 ELEVATIONS

SHEET of
A10