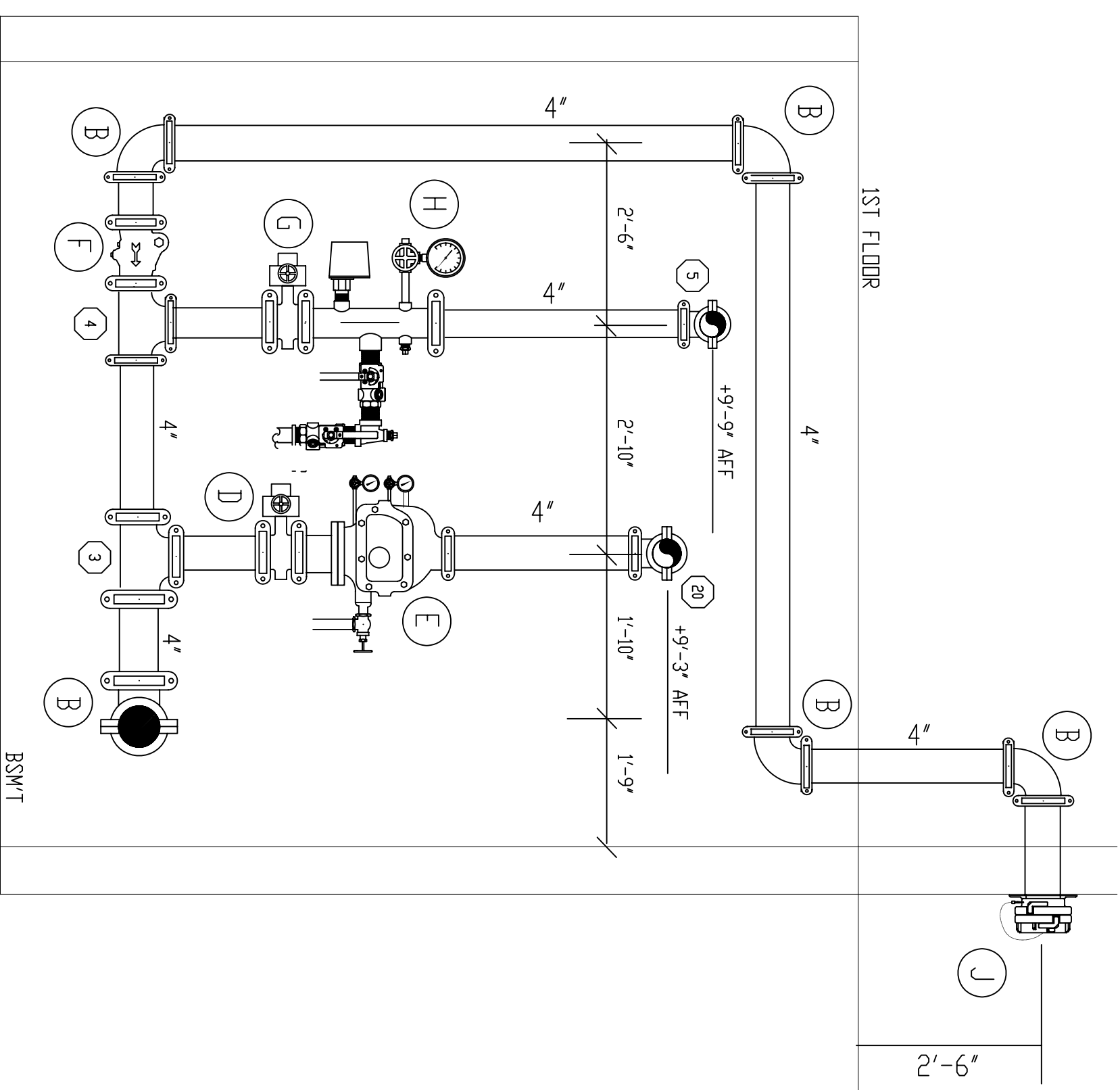
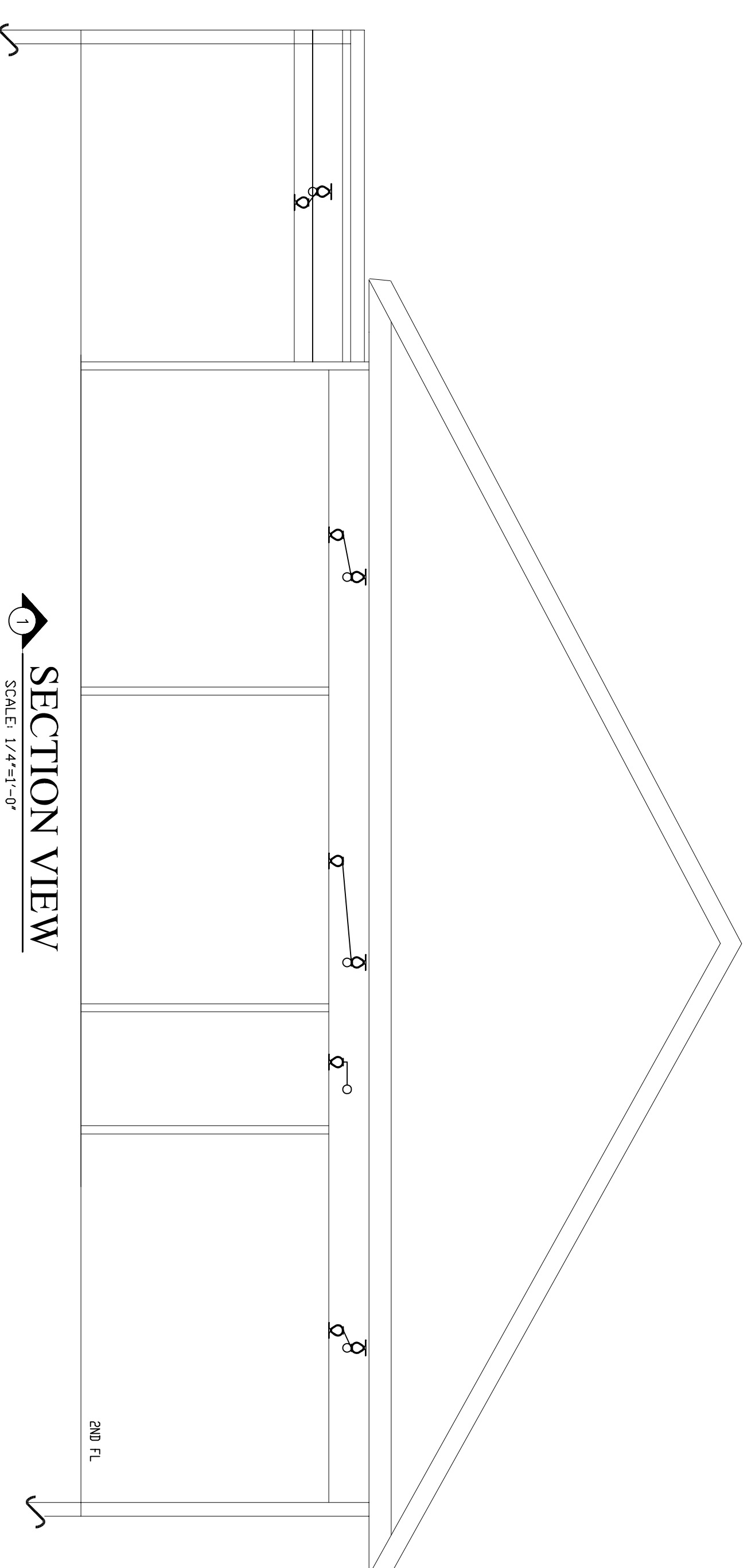


FIRE SPRINKLER GENERAL NOTES

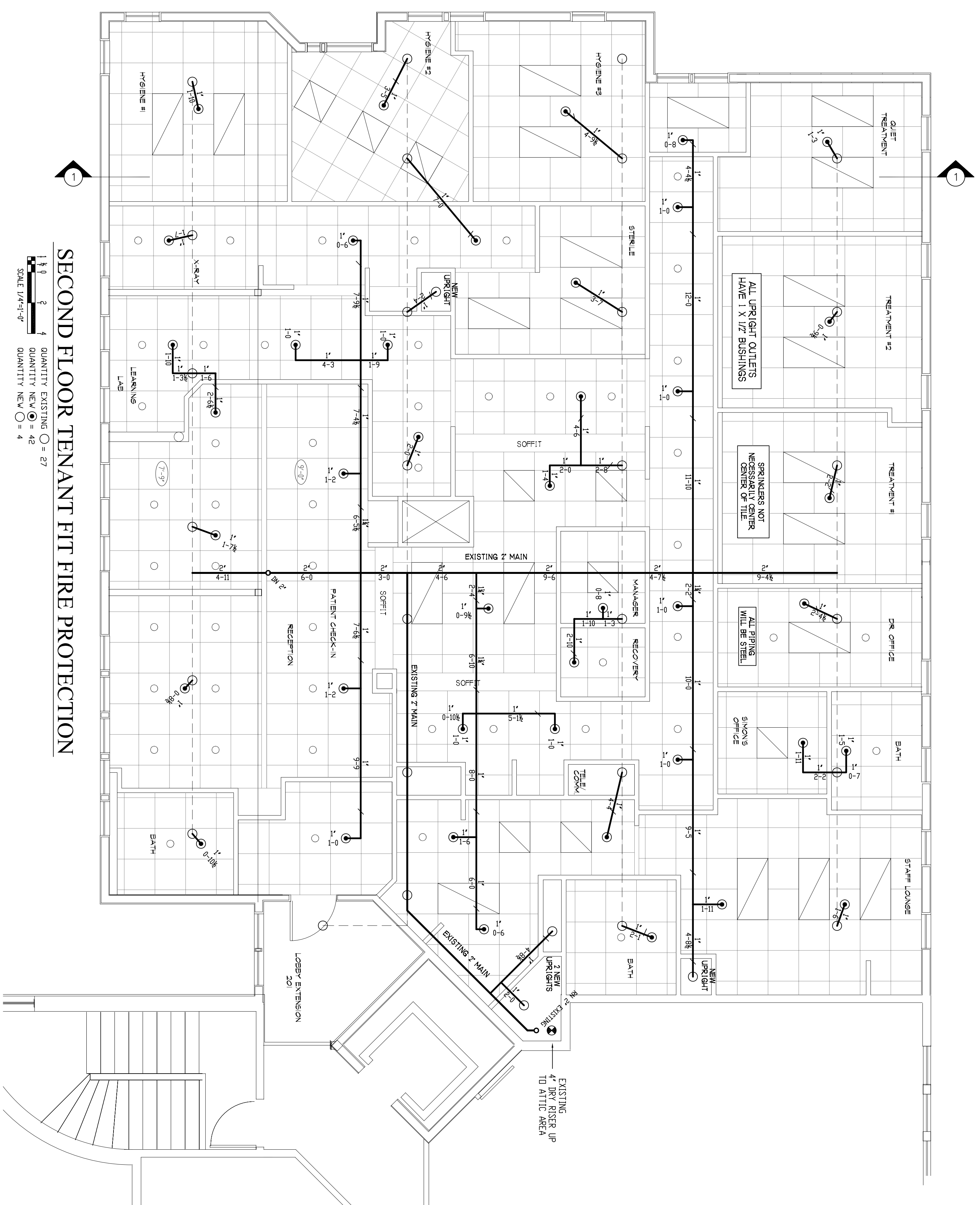
OCCUPANCY: BUSINESS
 DESIGN STANDARD: NFPA-13 2010
 DESIGN DENSITY: 0.10 GPM/950 SQ.FT.
 SPRINKLERS UPRIGHT: TYCO (AS NOTED ON PLAN)
 SPRINKLERS PENDENT: TYCO (AS NOTED ON PLAN)
 ESCUTCHEONS: WHITE 2 PIECE SEMI-REC.
 PIPING 1"-1 1/2": SCH. 40 OR SCH. 10 BLACK STEEL WITH THREADED ENDS.
 PIPING 2"-6": SCH. 10 BLACK WITH GROOVED ENDS.
 PIPING 1"-2": BLAZE MASTER CPVC.
 HANGERS TO BE U.L. & FM APPROVED.
 AND SPACED PER NFPA-13
 ALL PIPING TO BE TESTED AT 200 PSI FOR 2 HOURS.
 PROVIDE TAMPER SWITCH ON ALL CONTROL VALVES.
 PROVIDE SPARE HEAD CABINET PER NFPA-13.
 PROVIDE HYDRAULIC NAME PLATE PER NFPA-13.
 COORDINATE FIRE SPRINKLER PIPING WITH OTHER TRADES.
 (D) DENOTES HYDRAULIC REFERENCE POINTS.
 + DENOTES GROOVED COUPLING IN PIPE.
 RN = RISER NIPPLE.
 SG = SPRIG.
 DN = DROP NIPPLE.
 GC = GROOVED COUPLING.
 TOE = THREAD ONE END.
 GBE = GROOVE BOTH ENDS.



EXISTING RISER DETAIL



SECTION VIEW



SECOND FLOOR TENANT FIT FIRE PROTECTION

SCALE 1/4"=1'-0"
 QUANTITY EXISTING ○ = 27
 QUANTITY NEW ○ = 42

REVISIONS	NOTES	HEAD COUNT
1	SPRINKLER TYPE IDENTIFICATION NO. MFG. ESC. MODEL FINISH ORIFICE TEMP. SYMBOL QUANT.	42
2	QUICK RESP. EQUIPMENT K-1.6S TY2321 TY2321 TY2321 TY2321	4
3	EXISTING DR. UPRIGHT K-1.6S TY2321 TY2321 TY2321 TY2321	4
4	EXISTING DR. UPRIGHT K-1.6S TY2321 TY2321 TY2321 TY2321	4
TOTAL SPRINKLERS THIS DRAWING		46

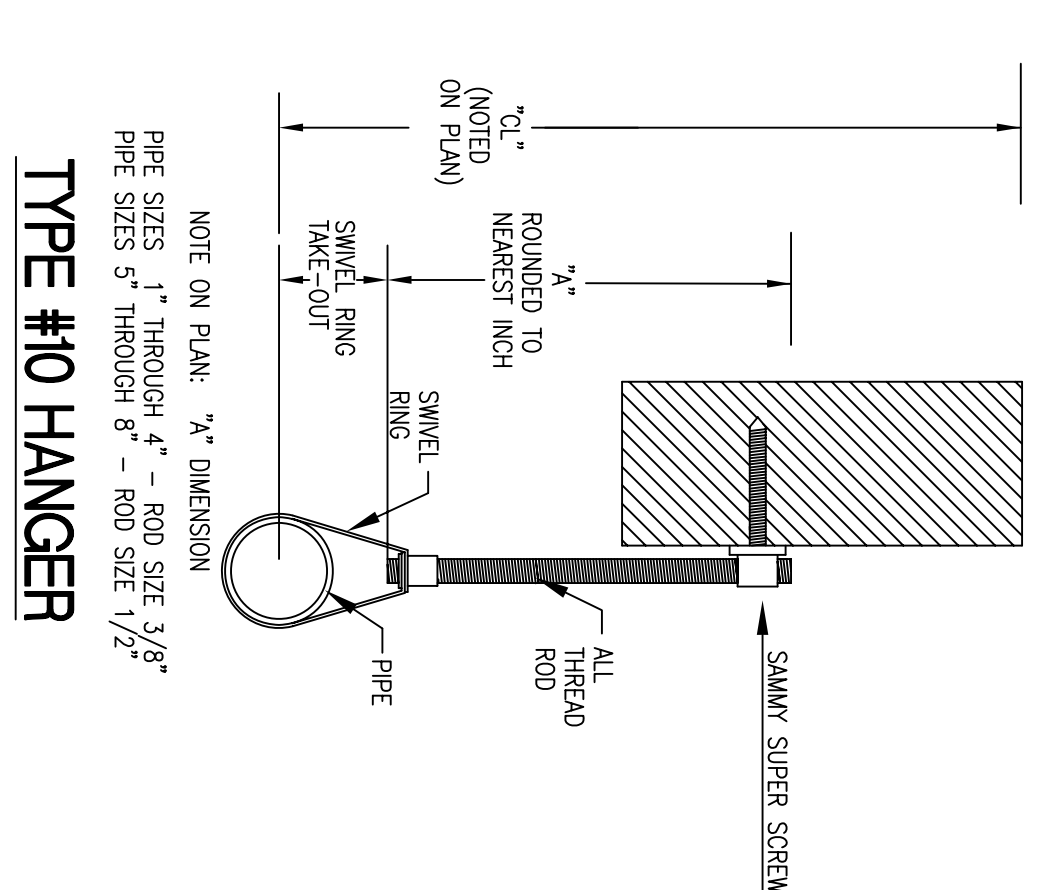
STANDARD SYMBOLS	STANDARD SYMBOLS
○ - POST INDICATOR VALVE	○ - ALARM CHECK VALVE
○ - KEY VALVE	○ - RISER W/ALARM VALVE
○ - FIRE INDICANT	○ - RISER W/DRY VALVE
○ - FIRE DEPT. CONNECTION	○ - RISER W/ELEC. FLOW SWITCH
○ - O.S. & Y GATE VALVE	○ - WATER W/RELIEF VALVE
○ - SWING CHECK VALVE	○ - FLASHING BELT
○ - NEW UNDERGROUND	○ - FLASHING BELT DEPT. CONNECTION
○ - EXIST. UNDERGROUND	

INSPECTIONS
1. _____
2. _____
3. _____
4. _____

RESPONSIBLE MANAGING SUPERVISOR 4348	CONTRACTOR LICENSE #295
_____	_____

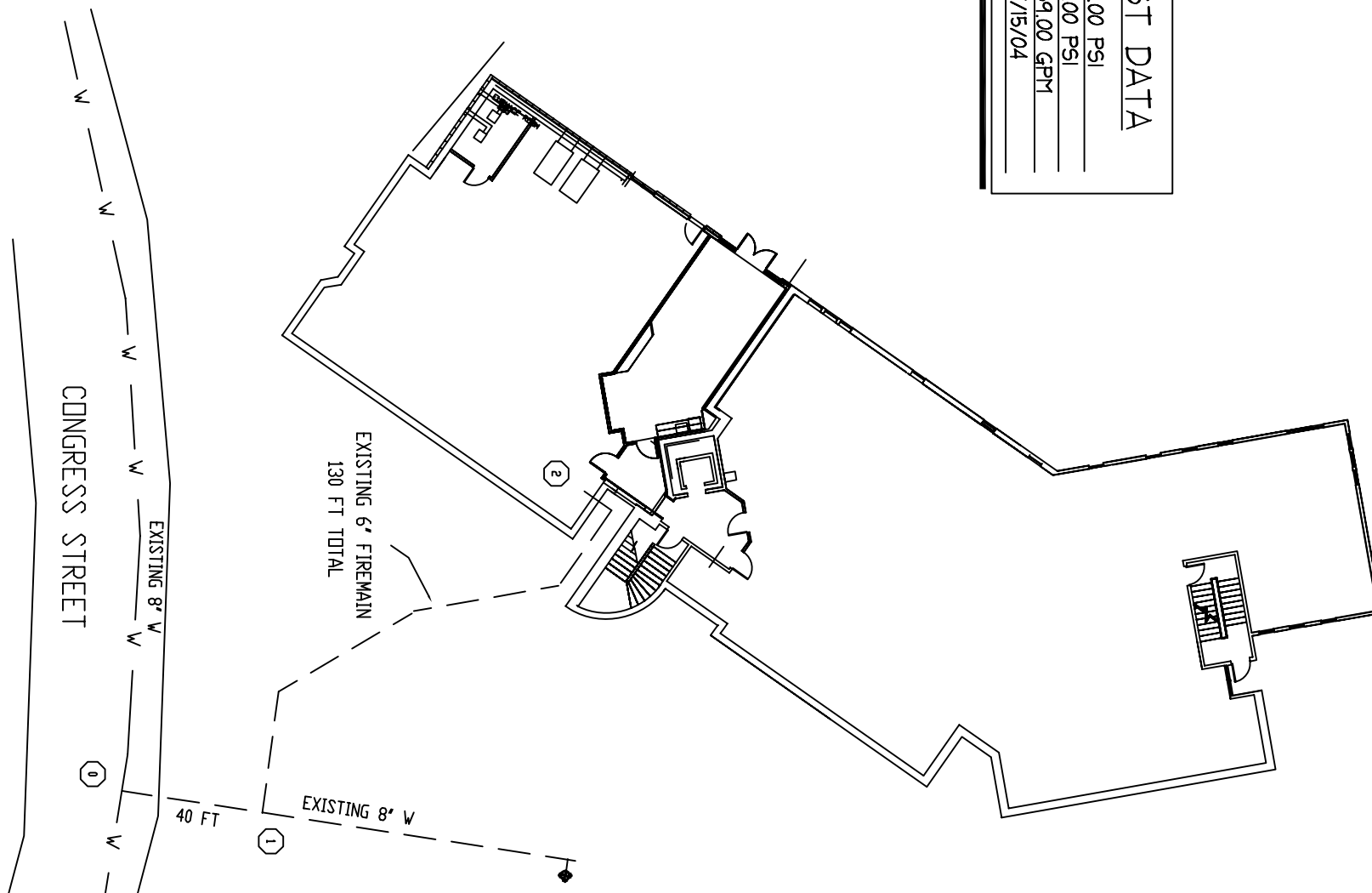
SOUTHERN MAINE PEDIATRICS DENTISTRY
 1601 CONGRESS STREET
 PORTLAND, MAINE 04101
 FIRE PROTECTION PLAN
 FREDDOM FIRE PROTECTION, INC.
 209 QUAKER RIDGE ROAD
 CASCO, MAINE 04015

JOB No.	MODEL
FP-1011	



TYPE #10 HANGER

FLOW TEST DATA	
STATIC PRESSURE	42.00 PSI
RESIDUAL PRESSURE	38.00 PSI
QUANTITY FLOWING	1000 GPM
DATE	3/29/12



EXISTING SITE PLAN